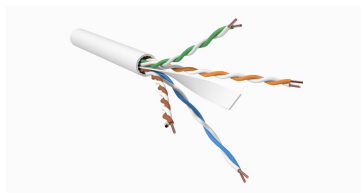


# 760258446 | 1081B WHT C6 4/23 U/UTP W1000



GigaSPEED XL5™ 1081B ETL Verified Category 6 U/UTP Cable, non-plenum, white jacket, 4 pair count, 1000 ft (305 m) length, WE TOTE® box

## Product Classification

|                              |  |
|------------------------------|--|
| <b>Regional Availability</b> | Asia   Australia/New Zealand   Latin America   North America |
| <b>Portfolio</b>             | SYSTIMAX®  |
| <b>Product Type</b>          | Twisted pair cable   |
| <b>Product Brand</b>         | GigaSPEED XL5™   |
| <b>Ordering Note</b>         | Not available in Europe, the Middle East, or Africa          |

## General Specifications

|                                |   |
|--------------------------------|---|
| <b>Product Number</b>          | 1081B   |
| <b>ANSI/TIA Category</b>       | 6   |
| <b>Cable Component Type</b>    | Horizontal  |
| <b>Cable Type</b>              | U/UTP (unshielded)  |
| <b>Conductor Type, singles</b> | Solid   |
| <b>Conductors, quantity</b>    | 8   |
| <b>Jacket Color</b>            | White   |
| <b>Pairs, quantity</b>         | 4   |
| <b>Separator Type</b>          | Bisector  |
| <b>Supported Application</b>   | Fully Supports 2.5/5GBASE-T applications in a 4 connector channel @ 100 meters              |
| <b>Transmission Standards</b>  | 10/100/1000/2.5G/5GBASE-T   ANSI/TIA-568.2-D   CENELEC EN 50288-6-1   ISO/IEC 11801 Class E |

## Dimensions

|  |                     |
|--|---------------------|
| <b>Cable Length</b>                      | 304.8 m   1000 ft   |
| <b>Diameter Over Insulated Conductor</b> | 1.029 mm   0.041 in |
| <b>Diameter Over Jacket, nominal</b>     | 5.969 mm   0.235 in |
| <b>Jacket Thickness</b>                  | 0.559 mm   0.022 in |
| <b>Conductor Gauge, singles</b>          | 23 AWG              |

## Electrical Specifications

# 760258446 | 1081B WHT C6 4/23 U/UTP W1000

|  |   |
|--|---|
| <b>Characteristic Impedance</b>              | 100 ohm   |
| <b>dc Resistance Unbalance, maximum</b>      | 5 %   |
| <b>dc Resistance, maximum</b>                | 7.61 ohms/100 m   2.32 ohms/100 ft  |
| <b>Dielectric Strength, minimum</b>          | 1500 Vac   2500 Vdc   |
| <b>Mutual Capacitance at Frequency</b>       | 5.6 nF/100 m @ 1 kHz  |
| <b>Nominal Velocity of Propagation (NVP)</b> | 70 %  |
| <b>Operating Frequency, maximum</b>          | 300 MHz   |
| <b>Operating Voltage, maximum</b>            | 80 V  |
| <b>Remote Powering</b>                       | Fully complies with the recommendations set forth by IEEE 802.3bt (Type 4) for the safe delivery of power over LAN cable when installed according to ISO/IEC 14763-2, CENELEC EN 50174-1, CENELEC EN 50174-2 or TIA TSB-184-A |

## Representative Image



## Material Specifications

|                            |             |
|----------------------------|-------------|
| <b>Conductor Material</b>  | Bare copper |
| <b>Insulation Material</b> | Polyolefin  |
| <b>Jacket Material</b>     | PVC         |
| <b>Separator Material</b>  | Polyolefin  |

## Mechanical Specifications

|                                 |                  |
|---------------------------------|------------------|
| <b>Pulling Tension, maximum</b> | 11.34 kg   25 lb |
|---------------------------------|------------------|

## Environmental Specifications

|                                 |                                     |
|---------------------------------|-------------------------------------|
| <b>Installation temperature</b> | 0 °C to +60 °C (+32 °F to +140 °F)  |
| <b>Operating Temperature</b>    | -20 °C to +60 °C (-4 °F to +140 °F) |
| <b>Environmental Space</b>      | Non-plenum                          |
| <b>Temperature Rating, UL</b>   | 75 °C   167 °F                      |
| <b>Flame Test Method</b>        | CMG   CMR                           |

## Packaging and Weights

|                       |                          |
|-----------------------|--------------------------|
| <b>Cable weight</b>   | 37.204 kg/km   25 lb/kft |
| <b>Packaging Type</b> | WE TOTE® box             |

## Regulatory Compliance/Certifications

| <b>Agency</b> | <b>Classification</b>  |
|---------------|--|
| CHINA-ROHS    | Below maximum concentration value  |
| REACH-SVHC    | Compliant as per SVHC revision on <a href="http://www.commscope.com/ProductCompliance">www.commscope.com/ProductCompliance</a> |
| ROHS          | Compliant  |
| UK-ROHS       | Compliant  |

