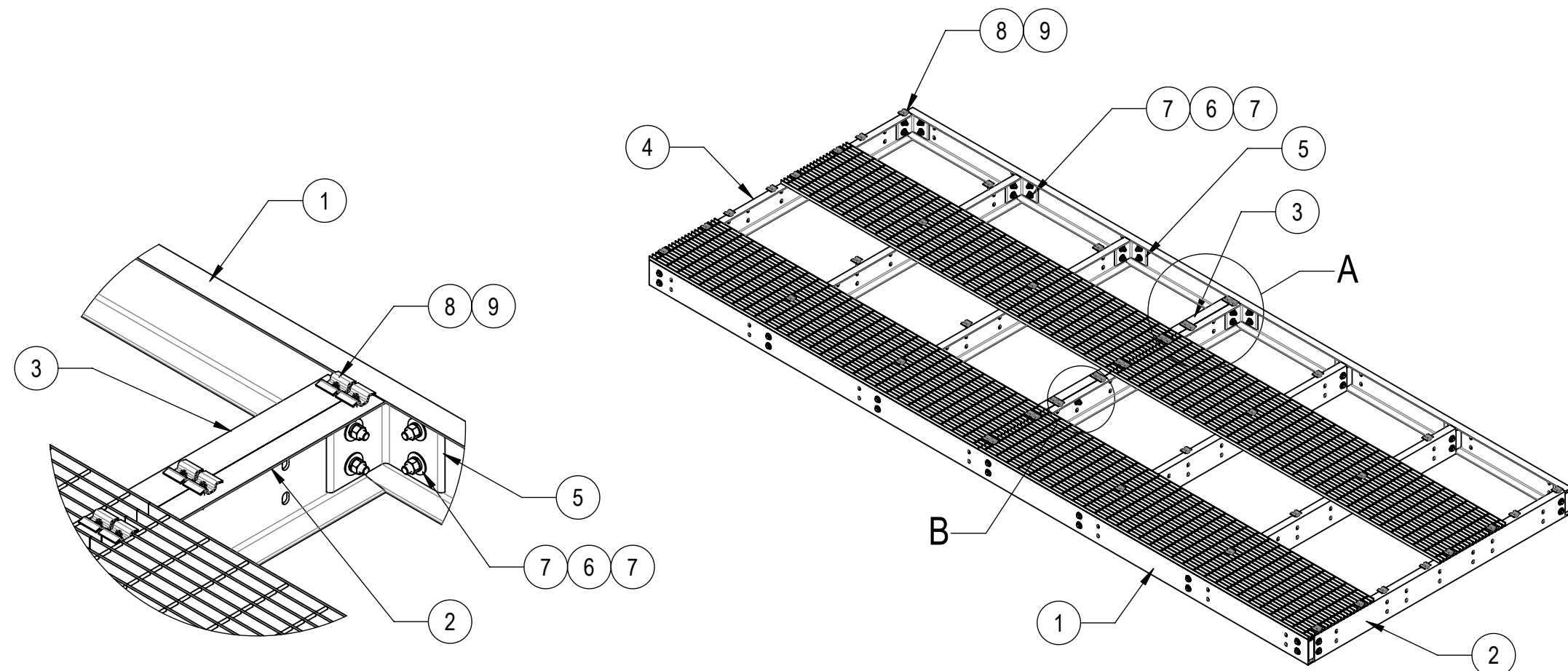
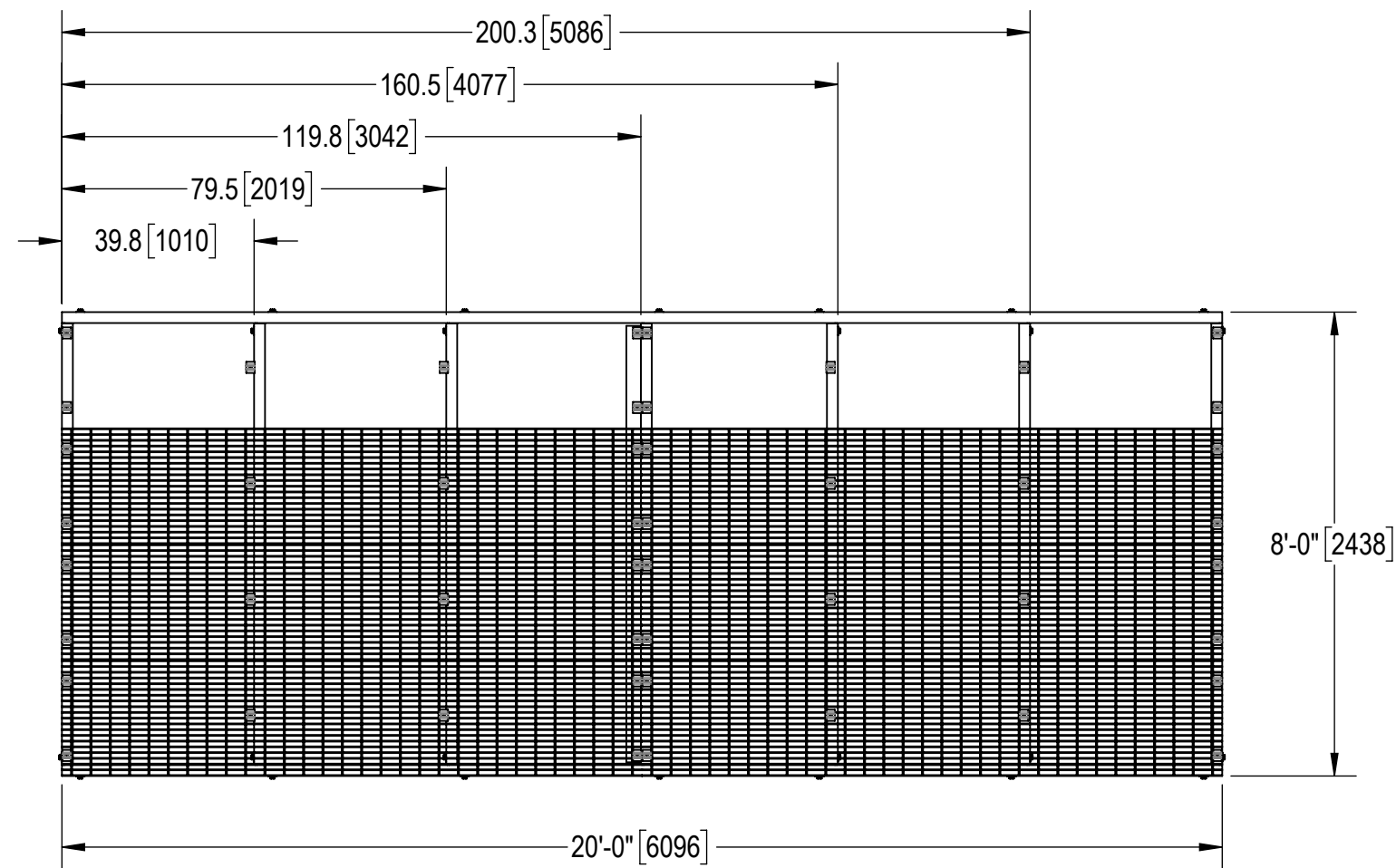


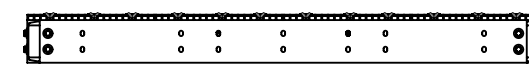
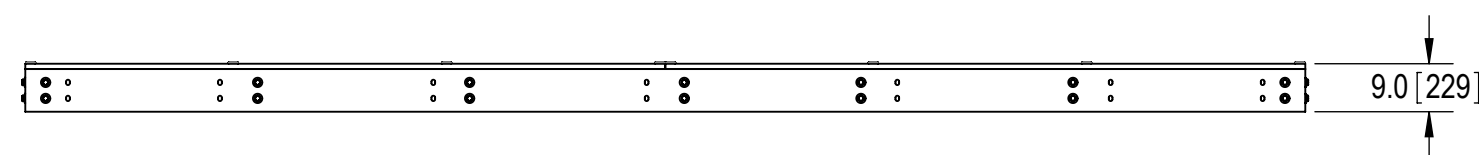
- 1.0 GENERAL NOTES
 1.1 ALL METRIC DIMENSIONS ARE IN BRACKETS [X.X]
 1.2 FOR PATENT INFO: <https://www.cs-pat.com>
 2.0 DESIGN NOTES
 3.0 MANUFACTURING/SPECIAL REQUIREMENTS
 3.1 TIGHTEN ALL BOLTS SECURING FLAT PLATES BY THE TURN-OF-NUT METHOD. TIGHTEN ALL U-BOLTS USING TURN-OF-NUT METHOD WITH ATTENTION TO LEAVE EQUAL DISTANCE AND EQUAL FORCE ON EACH LEG OF THE U-BOLT.
 3.2 BAR GRATING ALIGNED ACROSS CENTER CHANNELS.
 4.0 TEST
 5.0 PACKAGING
 5.1 PACKAGING SHALL MEET COMMSCOPE REQUIREMENTS PER DOCUMENT IS-PL-3005
 5.2 PRINTED DOCUMENT TO BE PLACED INSIDE POLYBAG AND THEN IN SHIPPING CONTAINER
 5.3 EXTRA HARDWARE MAY BE SUPPLIED, BAGGED AND SHIPPED

| REVISIONS | | | |
|-----------|--|-------------------|-----------------------|
| REV. | DESCRIPTION | DATE | APPROVED |
| A | INITIAL RELEASE | MSM 04APR12 | TP |
| B | UPDATED DRAWING FORMAT; MTC390324 AND TS1220 WAS GCM03 | LL1090 08MAR24 | BCROSS 40190172CMO |



DETAIL A
SCALE 1 : 10

DETAIL B
SCALE 1 : 10



COMPONENT PART NUMBERS PROVIDED FOR ASSEMBLY PURPOSES;
 INDIVIDUAL COMPONENTS MAY BE SHIPPED AS PARTS WITHIN AN INCLUDED KIT.

| ITEM NO. | PART NUMBER | DESCRIPTION | QTY. | WEIGHT | NOTE NO. |
|----------|---------------|--------------------------------|------|------------|----------|
| 1 | MTC7902102001 | 20' SIDE CHANNEL | 2 | 227.29 LBS | |
| 2 | MTC7902080801 | 8' CENTER CHANNEL | 7 | 86.21 LBS | |
| 3 | MTC7902080804 | 8' GRATING SECTION BRACKET | 1 | 42.93 LBS | |
| 4 | MTC7902081001 | 24" X 120" BAR GRATING | 8 | 141.45 LBS | |
| 5 | MTC790203 | CHANNEL ADAPTER ANGLE | 14 | 7.07 LBS | |
| 6 | GB-05205 | 5/8" X 2" GALV BOLT KIT | 58 | 0.26 LBS | |
| 7 | GWf-05 | 5/8" GALV FLAT WASHER, 1.7OD | 116 | 0.06 LBS | |
| 8 | MTC390324 | BAR GRATING CLIP | 48 | 0.17 LBS | |
| 9 | TS1220 | 12-24 X 2" SELF DRILLING SCREW | 48 | 0.03 LBS | |

HIDE BAR GRATING FOR CLARITY

COMMSCOPE, INC. OF NORTH CAROLINA

| | | | |
|---|-----------------------------|---------------------|------------|
| TOLERANCES | | SAP MATERIAL MASTER | |
| 1 PLACE .X[X] ± 0.12[3.0] | 3 PLACE .XXX[X] ± 0.03[0.8] | EQ-P0820-B | |
| 2 PLACE .XX[X] ± 0.06[1.5] | ANGLES ± 2° | | |
| FINISH | | MATERIAL | |
| UNLESS OTHERWISE SPECIFIED DIMENSIONS ARE IN INCHES INTERPRET PER ANSI Y 14.5M-1994 | | TITLE | |
| CE | MSM | DATE | 04APR12 |
| RW | LL1090 | DATE | 03/15/2024 |
| AD | YW1045 | DATE | 03/18/2024 |
| RE | YMENG | DATE | 04/02/2024 |
| ECN 40190172CMO | | SCALE | |
| | | 1:36 | |
| | | DOCUMENT NO. | |
| | | EQ-P0820-B | |
| SIZE | Auth Group | INSL | MODEL |
| C | | | |
| VERSION | | DRAWING | |
| 01 | RE | B | 01 |
| STATUS | | REVISION | |
| RE | B | 01 | B |
| SHEET | | | 1 OF 1 |

| | | |
|--------------|----------|---------------------|
| DENSITY | 2368.89 | lbs/in ³ |
| MASS | 8406.48 | lbs |
| VOLUME | 83929.73 | in ³ |
| SURFACE AREA | 96.0" | in ² |
| HEIGHT | 240.0" | |
| LENGTH | 96.0" | |
| WIDTH | | |