

A7846857 | SFP+-Kit (2 EA) with Optical Attenuator

Kit of 2 Small Form Factor pluggable+ BiDi Modules, 10G BASE, CWDM, Singlemode, TAA compliant, up to 40 km with optical attenuator

- Single LC connector
- Hot-pluggable SFP footprint
- Uncooled DFB laser transmitter
- RoHS compliant and Lead Free
- Up to 40Km on 9/125um SMF
- Metal enclosure for lower EMI
- Commercial and industrial operating temperature optional
- Trade Agreements Act (TAA) compliant

Product Classification

Product Type	Optical module
Product Series	BiDi SFP

General Specifications

Interface	LC/UPC
Note	Detailed Product Specifications are available. Please contact your local ANDREW representative.

Optical Specifications

Fiber Type	9/125 µm, singlemode
Average Optical Output Power, maximum	6 dBm
Average Optical Output Power, minimum	1 dBm
Operating Wavelength	1270 nm (Rx) 1270 nm (Tx) 1330 nm (Rx) 1330 nm (Tx)
Receiver Sensitivity, maximum	-13 dBm
Receiver Overload	+1 dBm

Environmental Specifications

Operating Temperature	0 °C to +70 °C (+32 °F to +158 °F)
------------------------------	------------------------------------

Packaging and Weights

Height, packed	20 mm 0.787 in
Width, packed	120 mm 4.724 in

A7846857 | SFP+-Kit (2 EA) with Optical Attenuator

Depth, packed	190 mm 7.48 in
Packaging quantity	1
Packaging Type	Bag
Weight, gross	0.14 kg 0.309 lb
Weight, net	0.1 kg 0.22 lb

Included Products

- A7832204
SFP+, 10G, Bi-Di, 1270nmTx /1330nmRx, up to 40 km - Small form factor pluggable+ BiDi Module, 10G BASE, CWDM, Singlemode, TAA compliant, up to 40 km
- A7832206
SFP+, 10G, Bi-Di, 1330nmTx /1270nmRx, up to 40 km - Small form factor pluggable+ BiDi Module, 10G BASE, CWDM, Singlemode, TAA compliant, up to 40 km
- A7843668 - Fiber Optic Power Reducing Build Out Attenuator, singlemode LC/UPC, 7dB,

A7832204 | SFP+, 10G, Bi-Di, 1270nmTx /1330nmRx, up to 40 km



Small form factor pluggable+ BiDi Module, 10G BASE, CWDM, Singlemode, TAA compliant, up to 40 km

- Single LC connector
- Hot-pluggable SFP footprint
- Uncooled DFB laser transmitter
- RoHS compliant and Lead Free
- Up to 40Km on 9/125um SMF
- Metal enclosure for lower EMI
- Commercial and industrial operating temperature optional
- Trade Agreements Act (TAA) compliant

Product Classification

Product Type	Optical module
Product Series	BiDi SFP

General Specifications

Interface	LC/UPC
Note	Detailed Product Specifications are available. Please contact your local ANDREW representative.

Dimensions

Height	12 mm 0.472 in
Width	13.9 mm 0.547 in
Depth	56.5 mm 2.224 in

Optical Specifications

Fiber Type	9/125 μ m, singlemode
Average Optical Output Power, maximum	6 dBm
Average Optical Output Power, minimum	1 dBm
Rx/Tx Power Accuracy	± 3 dB / ± 3 dB
Operating Wavelength	1270 nm (Tx) 1330 nm (Rx)
Receiver Sensitivity, maximum	-13 dBm
Receiver Overload	+1 dBm

A7832204 | SFP+, 10G, Bi-Di, 1270nmTx /1330nmRx, up to 40 km

Environmental Specifications

Operating Temperature 0 °C to +70 °C (+32 °F to +158 °F)

Packaging and Weights

Height, packed 20 mm | 0.787 in

Width, packed 105 mm | 4.134 in

Depth, packed 65 mm | 2.559 in

Packaging quantity 1

Packaging Type Box

Weight, gross 0.036 kg | 0.079 lb

Weight, net 0.022 kg | 0.049 lb

A7832206 | SFP+, 10G, Bi-Di, 1330nmTx /1270nmRx, up to 40 km



Small form factor pluggable+ BiDi Module, 10G BASE, CWDM, Singlemode, TAA compliant, up to 40 km

- Single LC connector
- Hot-pluggable SFP footprint
- Uncooled DFB laser transmitter
- RoHS compliant and Lead Free
- Up to 40Km on 9/125um SMF
- Metal enclosure for lower EMI
- Commercial and industrial operating temperature optional
- Trade Agreements Act (TAA) compliant

Product Classification

Product Type	Optical module
Product Series	BiDi SFP

General Specifications

Interface	LC/UPC
Note	Detailed Product Specifications are available. Please contact your local ANDREW representative.

Dimensions

Height	12 mm 0.472 in
Width	13.9 mm 0.547 in
Depth	56.5 mm 2.224 in

Optical Specifications

Fiber Type	9/125 μ m, singlemode
Average Optical Output Power, maximum	6 dBm
Average Optical Output Power, minimum	1 dBm
Rx/Tx Power Accuracy	\pm 3dB / \pm 3dB
Operating Wavelength	1270 nm (Rx) 1330 nm (Tx)
Receiver Sensitivity, maximum	-13 dBm
Receiver Overload	+1 dBm

A7832206 | SFP+, 10G, Bi-Di, 1330nmTx /1270nmRx, up to 40 km

Environmental Specifications

Operating Temperature 0 °C to +70 °C (+32 °F to +158 °F)

Packaging and Weights

Height, packed 20 mm | 0.787 in

Width, packed 105 mm | 4.134 in

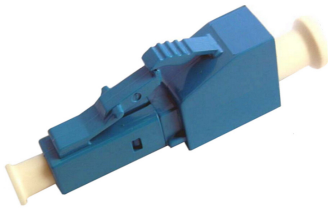
Depth, packed 65 mm | 2.559 in

Packaging quantity 1

Weight, gross 0.036 kg | 0.079 lb

Weight, net 0.022 kg | 0.049 lb

A7843668



Fiber Optic Power Reducing Build Out Attenuator, singlemode LC/UPC,
7dB,

- Designed to reduce or balance the power in passive optical networks
- Insertable between the connector and the adapter and therefore suited for distribution frames, cabinets and boxes
- High system flexibility because of wave-length independency and polarization insensitivity

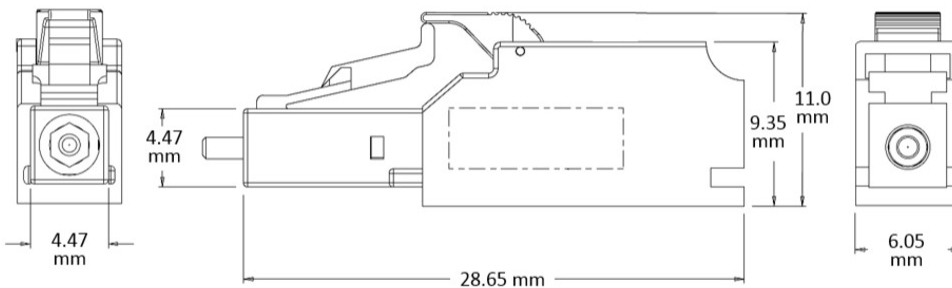
Product Classification

Regional Availability	North America
Product Type	Fiber attenuator
Product Series	FOA

General Specifications

Input Connector Interface	LC
Output Connector Interface	LC

Outline Drawing



Optical Specifications

Fiber Mode	Singlemode
-------------------	------------

A7843668

Attenuation, nominal	7 dB
Operating Wavelength	1430 – 1625 nm
Optical Components Standard	GR-910
Optical Power, maximum	250 mW
Return Loss, minimum	40 dB

Environmental Specifications

Operating Temperature	-40 °C to +75 °C (-40 °F to +167 °F)
Storage Temperature	-40 °C to +80 °C (-40 °F to +176 °F)