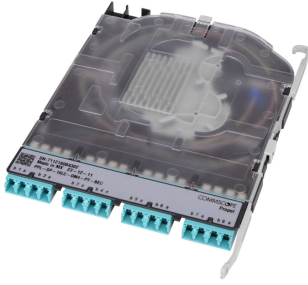


# 760255049 | PPL-SP-16LC-OM4-PT-BEU



Propel Multimode Splice Cassette, 16LC with internal shutters, OM4 single fiber pigtails, Method B Enhanced ULL

- Can be installed and removed from front or rear of panel
- This component requires 4 of the 12 lanes on the Propel Panel blade

## Product Classification

|                              |   |
|------------------------------|---|
| <b>Regional Availability</b> | Asia   Australia/New Zealand   EMEA   Latin America   North America |
| <b>Portfolio</b>             | SYSTIMAX®   |
| <b>Product Type</b>          | Fiber cassette with pigtails  |
| <b>Product Brand</b>         | Propel  |
| <b>Product Series</b>        | PPL   |

## General Specifications

|                               |                         |
|-------------------------------|-------------------------|
| <b>Color, front</b>           | Aqua                    |
| <b>Interface, front</b>       | LC/UPC                  |
| <b>Interface, rear</b>        | Stranded pigtail        |
| <b>Polarity</b>               | Method B Enhanced (ULL) |
| <b>Shuttered</b>              | Yes                     |
| <b>Total Fibers, quantity</b> | 16                      |

## Dimensions

|               |                       |
|---------------|-----------------------|
| <b>Height</b> | 67.31 mm   2.65 in    |
| <b>Width</b>  | 131.013 mm   5.158 in |

## Optical Specifications

|                                |           |
|--------------------------------|-----------|
| <b>Fiber Mode</b>              | Multimode |
| <b>Fiber Type</b>              | G.657.A2  |
| <b>Insertion Loss, maximum</b> | 0.15 dB   |

## Environmental Specifications

# 760255049 | PPL-SP-16LC-OM4-PT-BEU

---

**Qualification Standards** IEC 61753-1 | TIA-568.3-D

**Safety Standard** UL

## Packaging and Weights

**Included** Single Fusion Splice Protection Sleeves

**Packaging quantity** 1

## Included Products

103897-000 – SMOUV Fiber Optic Splice Heat Shrink Protective Sleeve for FIST Trays, pack of 100  
SMOUV-1120-02 pcs



## SMOUV Fiber Optic Splice Heat Shrink Protective Sleeve for FIST Trays, pack of 100 pcs

- Provide mechanical and environmental protection for fusion splices
- Optimal design for simple and correct fiber entrance
- Hot melt adhesive especially developed for optimal flow
- Transparent heat shrinkable tube for simple installation verification
- Short installation cycle and compatible with most common ovens

### Product Classification

|                              |   |
|------------------------------|---|
| <b>Regional Availability</b> | Asia   Australia/New Zealand   EMEA   Latin America   North America |
| <b>Product Type</b>          | Fiber protection sleeve   |
| <b>Product Brand</b>         | SMOUV®  |
| <b>Product Series</b>        | SMOUV   |
| <b>Ordering Note</b>         | Minimum order quantity (MOQ) is 1,000 pcs                           |

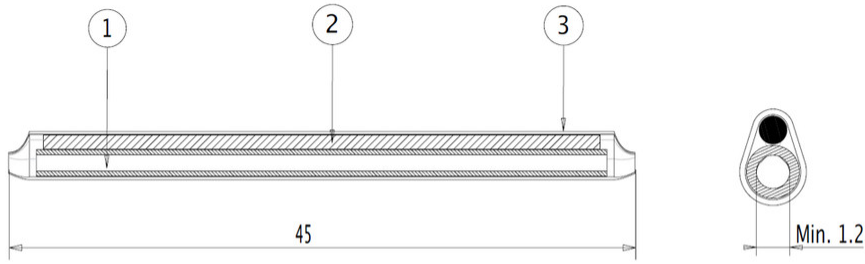
### General Specifications

|                      |                                  |
|----------------------|----------------------------------|
| <b>Application</b>   | single fusion splices            |
| <b>Splicing Type</b> | Heat shrink, single fiber fusion |

### Dimensions

|               |                  |
|---------------|------------------|
| <b>Length</b> | 45 mm   1.772 in |
|---------------|------------------|

### Outline Drawing



- 1 Hot melt adhesive
- 2 Stainless steel rod
- 3 Heat shrinkable tube

## Environmental Specifications

**Environmental Space** Indoor | Outdoor

## Packaging and Weights

**Packaging quantity** 100

**Packaging Type** Bag | Carton

## Regulatory Compliance/Certifications

| Agency        | Classification   |
|---------------|--|
| CHINA-ROHS    | Below maximum concentration value  |
| ISO 9001:2015 | Designed, manufactured and/or distributed under this quality management system   |
| REACH-SVHC    | Compliant as per SVHC revision on <a href="http://www.commscope.com/ProductCompliance">www.commscope.com/ProductCompliance</a> |
| ROHS          | Compliant  |
| UK-ROHS       | Compliant  |

