

760255045 | PPL-SP-12LC-OM5-PT-BEU



Propel Multimode Splice Cassette, 12LC with internal shutters, OM5 single fiber pigtails, Method B Enhanced ULL

- Can be installed and removed from front or rear of panel
- This component requires 3 of the 12 lanes on the Propel Panel blade

Product Classification

Regional Availability	Asia Australia/New Zealand EMEA Latin America North America
Portfolio	SYSTIMAX®
Product Type	Fiber cassette with pigtails
Product Brand	Propel
Product Series	PPL

General Specifications

Color, front	Lime green
Interface, front	LC/UPC
Interface, rear	Stranded pigtail
Polarity	Method B Enhanced (ULL)
Shuttered	Yes
Total Fibers, quantity	12

Dimensions

Height	67.31 mm 2.65 in
Width	97.993 mm 3.858 in

Optical Specifications

Fiber Mode	Multimode
Fiber Type	G.657.A2
Insertion Loss, maximum	0.15 dB

Environmental Specifications

760255045 | PPL-SP-12LC-OM5-PT-BEU

Qualification Standards IEC 61753-1 | TIA-568.3-D

Safety Standard UL

Packaging and Weights

Included Single Fusion Splice Protection Sleeves

Packaging quantity 1

Included Products

103897-000 – SMOUV Fiber Optic Splice Heat Shrink Protective Sleeve for FIST Trays, pack of 100
SMOUV-1120-02 pcs



SMOUV Fiber Optic Splice Heat Shrink Protective Sleeve for FIST Trays, pack of 100 pcs

- Provide mechanical and environmental protection for fusion splices
- Optimal design for simple and correct fiber entrance
- Hot melt adhesive especially developed for optimal flow
- Transparent heat shrinkable tube for simple installation verification
- Short installation cycle and compatible with most common ovens

Product Classification

Regional Availability	Asia Australia/New Zealand EMEA Latin America North America
Product Type	Fiber protection sleeve
Product Brand	SMOUV®
Product Series	SMOUV
Ordering Note	Minimum order quantity (MOQ) is 1,000 pcs

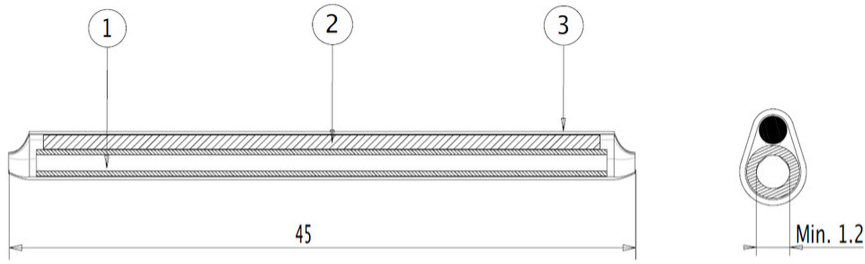
General Specifications

Application	single fusion splices
Splicing Type	Heat shrink, single fiber fusion

Dimensions

Length	45 mm 1.772 in
---------------	------------------

Outline Drawing



- 1 Hot melt adhesive
- 2 Stainless steel rod
- 3 Heat shrinkable tube

Environmental Specifications

Environmental Space Indoor | Outdoor

Packaging and Weights

Packaging quantity 100

Packaging Type Bag | Carton

Regulatory Compliance/Certifications

Agency	Classification
CHINA-ROHS	Below maximum concentration value
ISO 9001:2015	Designed, manufactured and/or distributed under this quality management system
REACH-SVHC	Compliant as per SVHC revision on www.commscope.com/ProductCompliance
ROHS	Compliant
UK-ROHS	Compliant

