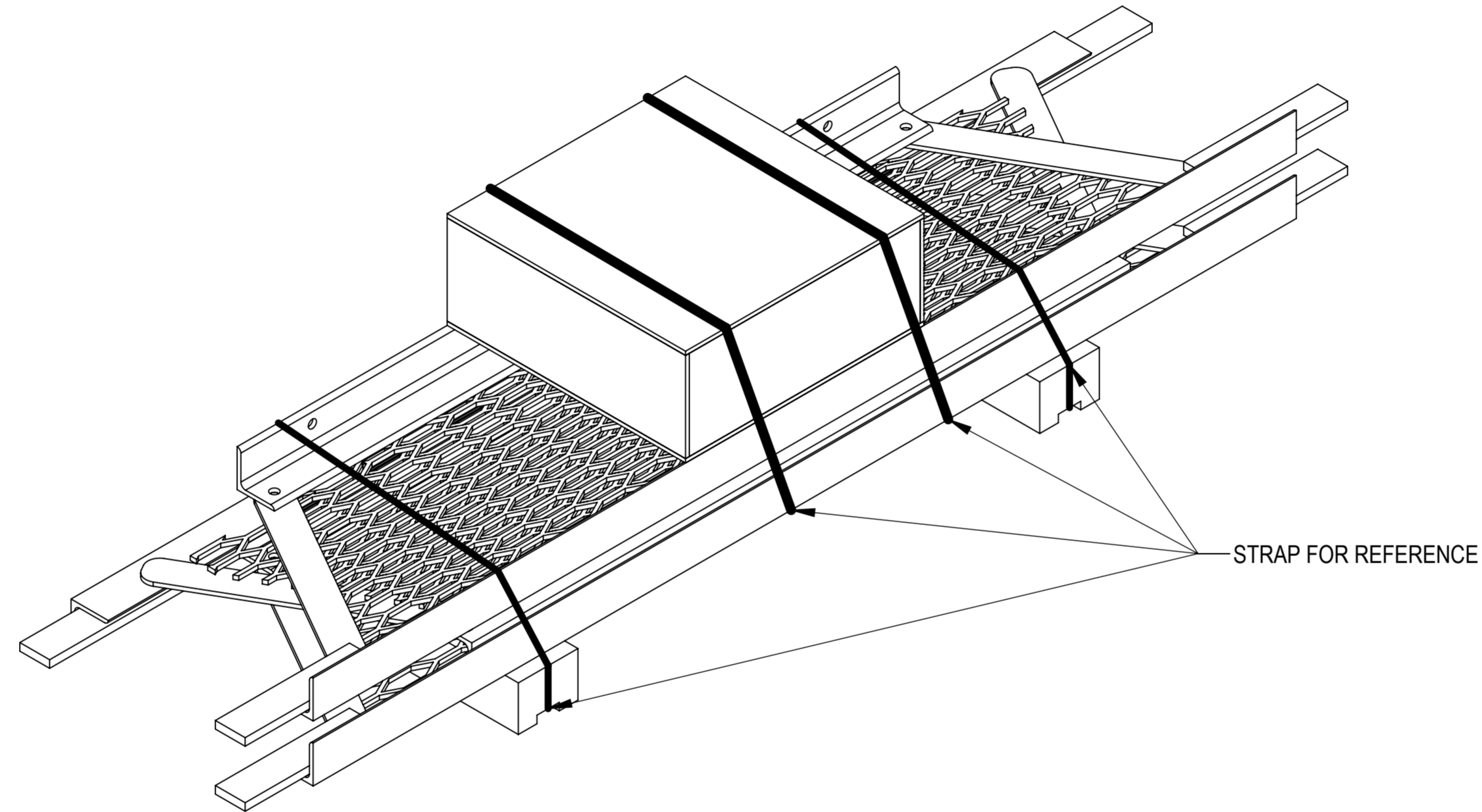


- 1.0 GENERAL NOTES  
 1.1 ALL IMPERIAL DIMENSIONS ARE IN BRACKETS [X. X]  
 1.2 FOR PATENT INFO: <https://www.cs-pat.com>
- 2.0 DESIGN NOTES  
 2.1 ANY HAZARDS OR OBSTRUCTIONS TO THE CLIMBING FACILITY AND SAFETY CLIMB MUST BE IDENTIFIED PRIOR TO INSTALLING THE APPURTENANCE. ADDITIONAL PRODUCTS MAY BE REQUIRED TO MAINTAIN THE INTEGRITY OF THE SAFETY CLIMB. DURING INSTALLATION, TEMPORARY AND/OR PERMANENT PRECAUTIONARY MEASURES SHOULD BE TAKEN TO PRESERVE THE CLIMBING FACILITY AND/OR SAFETY CLIMB.
- 3.0 MANUFACTURING/SPECIAL REQUIREMENTS  
 3.1 TIGHTEN ALL BOLTS SECURING FLAT PLATES BY THE TURN-OF-NUT METHOD. TIGHTEN ALL U-BOLTS USING TURN-OF-NUT METHOD WITH ATTENTION TO LEAVE EQUAL DISTANCE AND EQUAL FORCE ON EACH LEG OF THE U-BOLT.
- 4.0 TEST  
 5.0 PACKAGING  
 5.1 PACKAGING SHALL MEET COMMSCOPE REQUIREMENTS PER DOCUMENT IS-PL-3005  
 5.2 PRINTED DOCUMENT TO BE PLACED INSIDE POLYBAG AND THEN IN SHIPPING CONTAINER  
 5.3 EXTRA HARDWARE MAYBE SUPPLIED, BAGGED AND SHIPPED

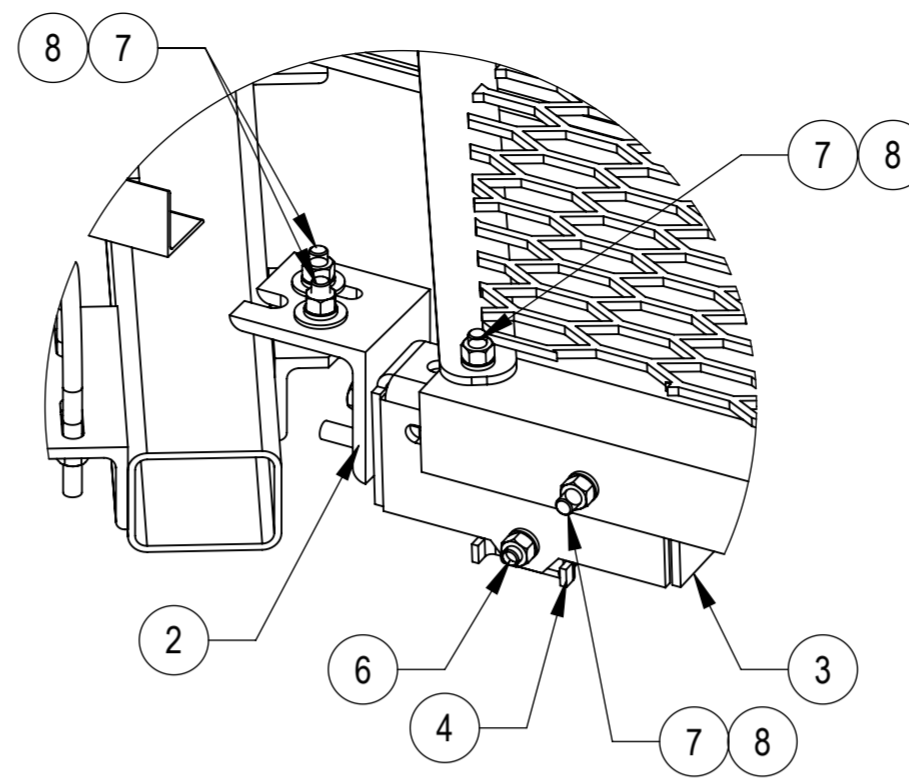
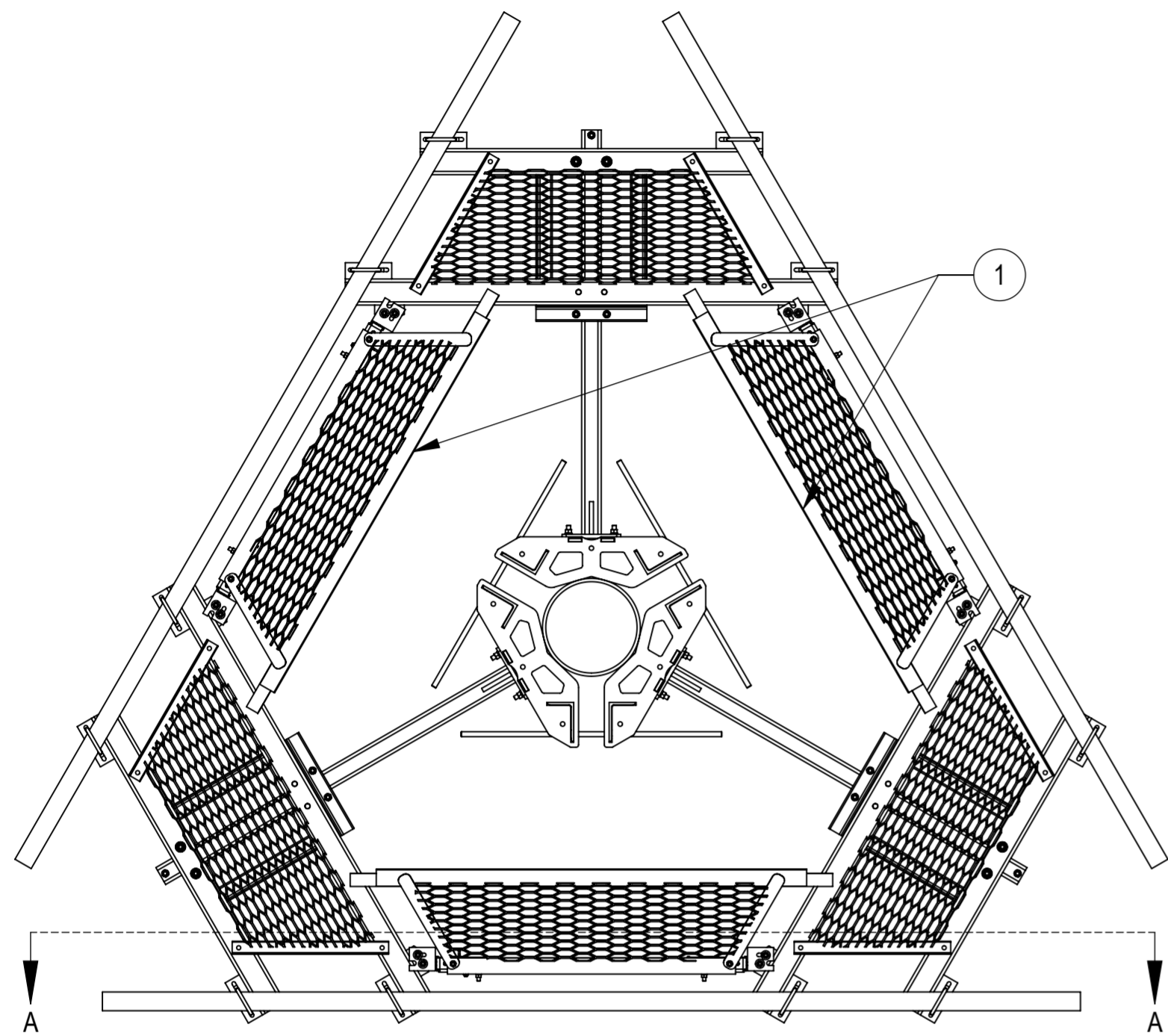
REVISIONS			
REV.	DESCRIPTION	DATE	APPROVED
A	INITIAL RELEASE	JL1183 15MAY23	CB1094 40162835CMO



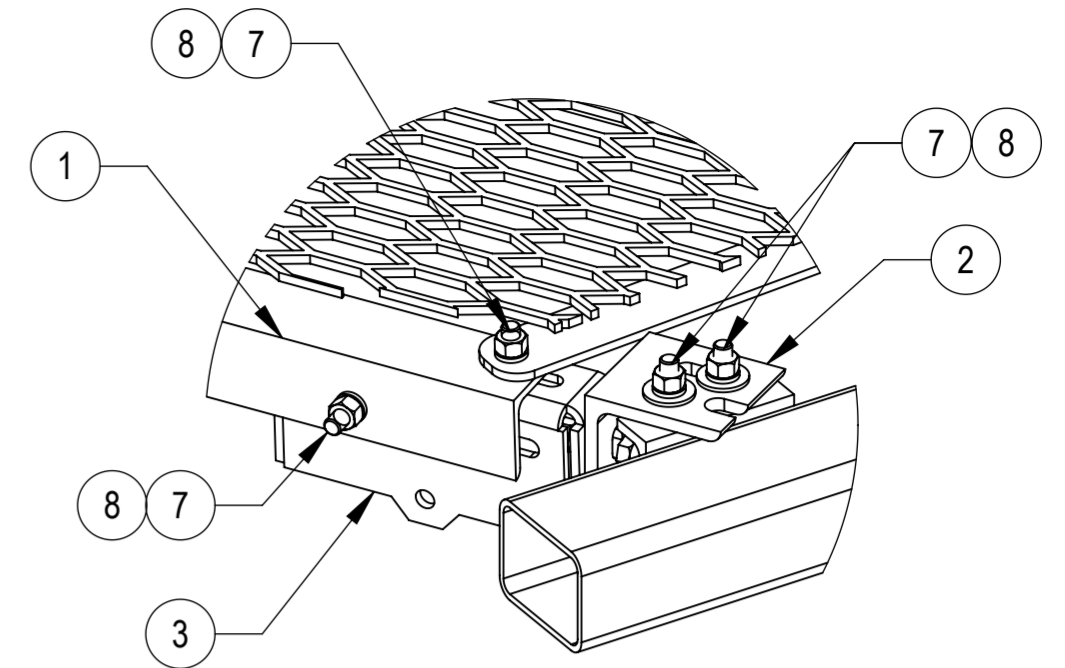
<b>COMMSCOPE, INC. OF NORTH CAROLINA</b>									
TOLERANCES						SAP MATERIAL MASTER			
0 PLACE X[.X] ± 6[0.25]		2 PLACE .XX[.XXX] ± 1.50[0.06]				<b>MC-WKA</b>			
1 PLACE .X[.XX] ± 3.0[0.12]		ANGLES ± 2°							
FINISH						MATERIAL			
UNLESS OTHERWISE SPECIFIED DIMENSIONS ARE IN MILLIMETERS INTERPRET PER ANSI Y 14.5M-1994	NAME		DATE		TITLE				
	CE	JL1183	15MAY23		<b>ADJUSTABLE PLATFORM WALKWAY-KIT</b>				
	RW	JL1183	05/23/2023						
	AD	CB1094	05/24/2023		SCALE		DOCUMENT NO.		
	RE	JL1183	05/24/2023		<b>1:6</b>		<b>MC-WKA</b>		
ECN 40162835CMO									
SIZE		Auth Group		INSL		MODEL		DRAWING	
<b>A2</b>									
						VERSION		STATUS	
						00		RE	
						A		00	
						RE		A	
								REVISION	
								A	
								SHEET	
								1 OF 3	

DENSITY	lbs/in³
MASS	227.09 lbs
VOLUME	801.29 in³
SURFACE AREA	7622.65 in²
DENSITY	g/mm³
MASS	103222.4753 grams
VOLUME	13131676.8629 mm³
SURFACE AREA	4917839.2827 mm²
HEIGHT	406[16.0]
LENGTH	1879.6[74.0]
WIDTH	381[15.0]

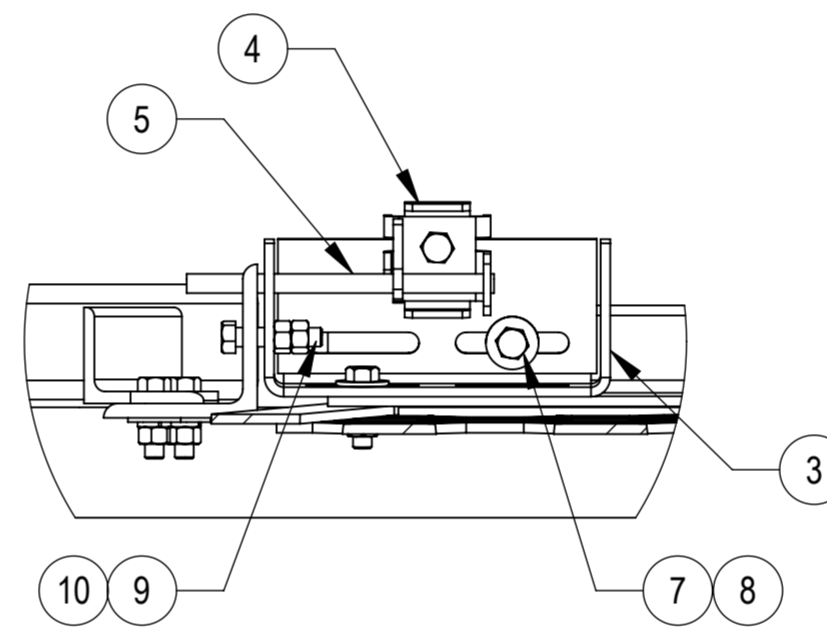
MOUNTED ON PLATFORM SHOWN FOR REFERENCE  
(RING MOUNT, PLATFORM & PIPES ARE NOT INCLUDED IN THIS KIT)



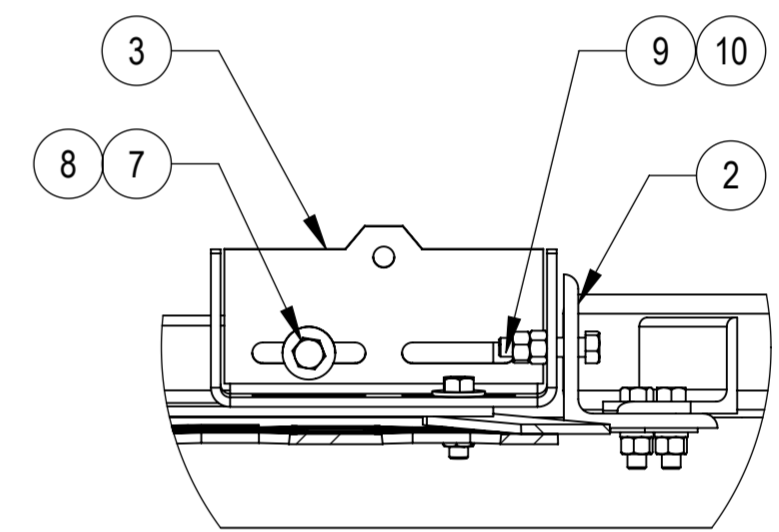
DETAIL D  
SCALE 1 : 5



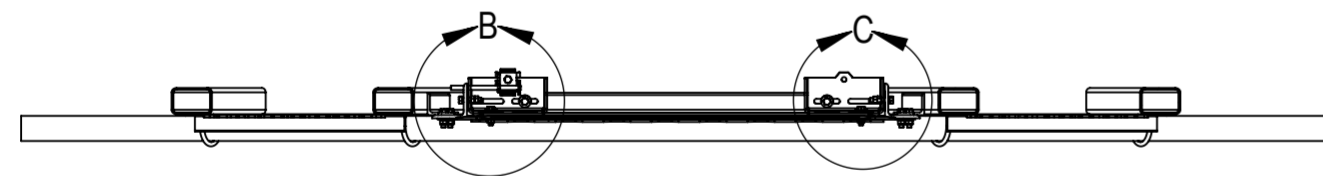
DETAIL E  
SCALE 1 : 5



DETAIL B  
SCALE 1 : 5



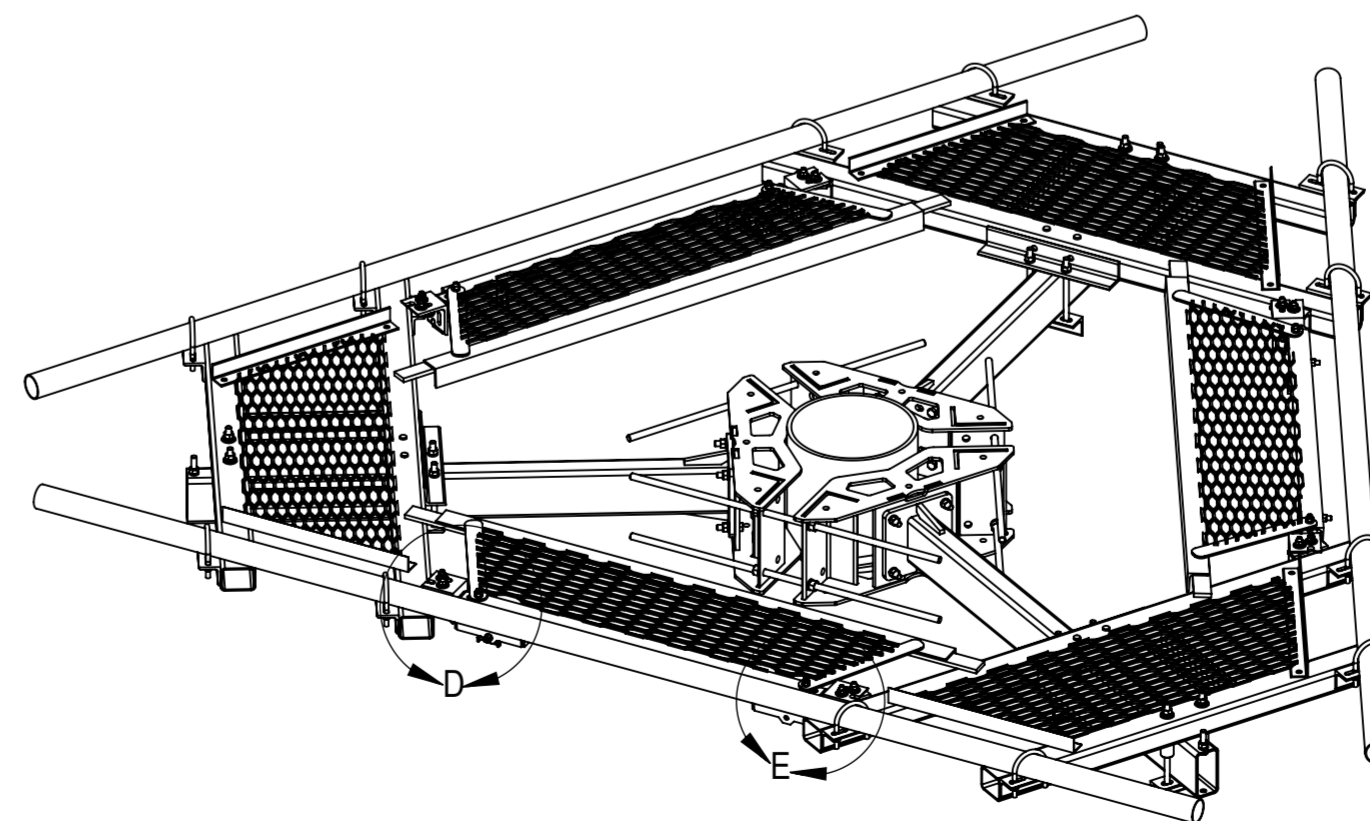
DETAIL C  
SCALE 1 : 5



SECTION A-A  
SCALE 1 : 22

COMPONENT PART NUMBERS PROVIDED FOR ASSEMBLY PURPOSES;  
INDIVIDUAL COMPONENTS MAY BE SHIPPED AS PARTS WITHIN AN INCLUDED KIT.

ITEM NO.	PART NUMBER	DESCRIPTION	QTY.	WEIGHT	NOTE NO.
1	MC-AS-3000-00	WELDMENT, CO-LOCATION PLATFORM	3	58.74 LBS	
2	MC-AS-1300-00	ANG, MONO PLATF CONNECTION PLATE	6	2.47 LBS	
3	MC-AS-3400-00	BRACKET, MONO PLATF WALKWAY PIVOT	6	4.09 LBS	
4	MC-AS-3801-00	RETAINER, MONO PLATF WALKWAY PIVOT	3	0.67 LBS	
5	MC-AS-3802-00	HANDLE, MONO PLATF WALKWAY PIVOT	3	0.71 LBS	
6	GB-04125	1/2" X 1-1/4" GALV BOLT KIT	3	0.116 LBS	
7	GB-04165	1/2" X 1-3/4" GALV BOLT KIT	24	0.143 LBS	
8	GWF-04	1/2" GALV FLAT WASHER	24	0.04 LBS	
9	GB-04225	1/2" X 2-1/4" GALV BOLT KIT	6	0.171 LBS	
10	GN-04	1/2" GALV HEX NUT	9	0.04 LBS	

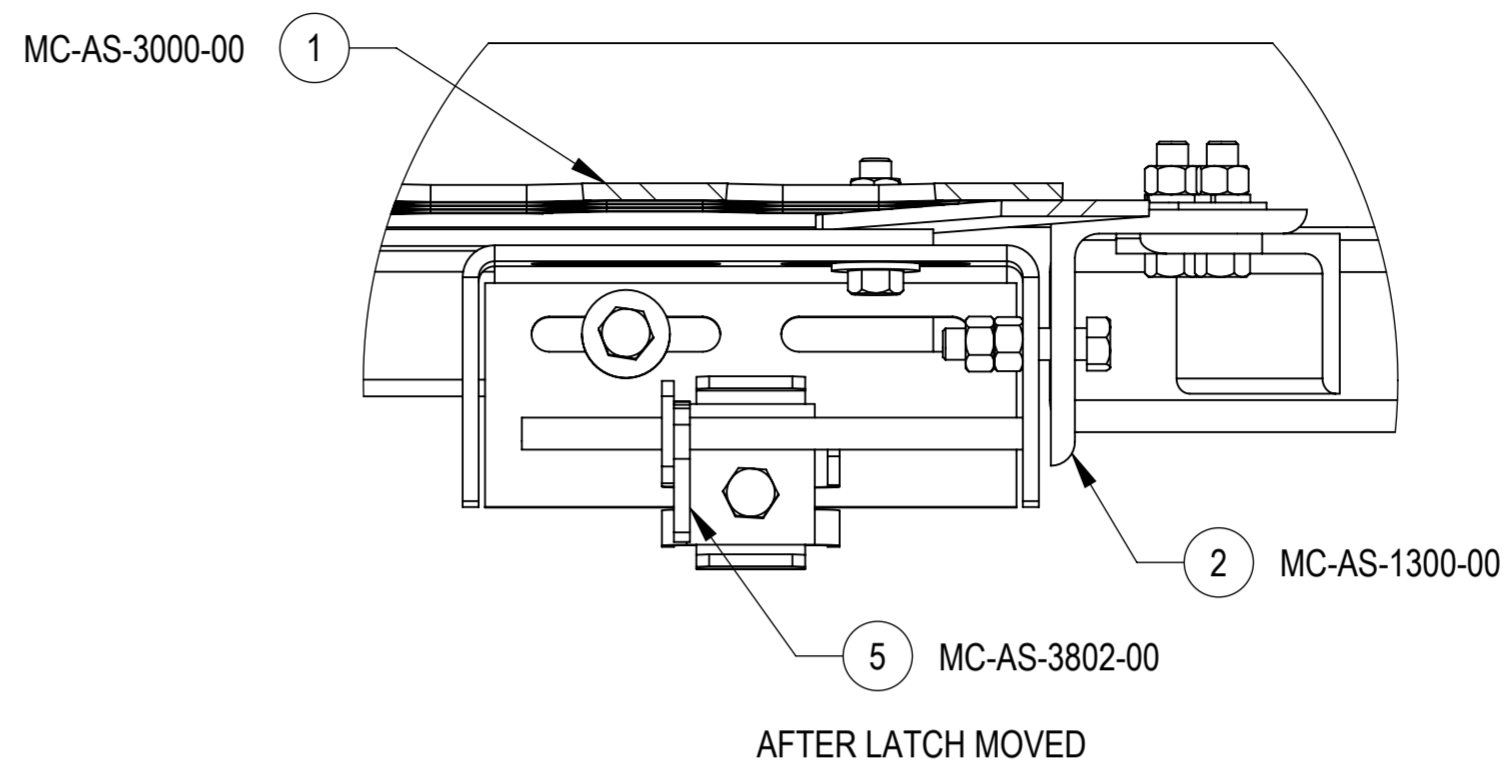
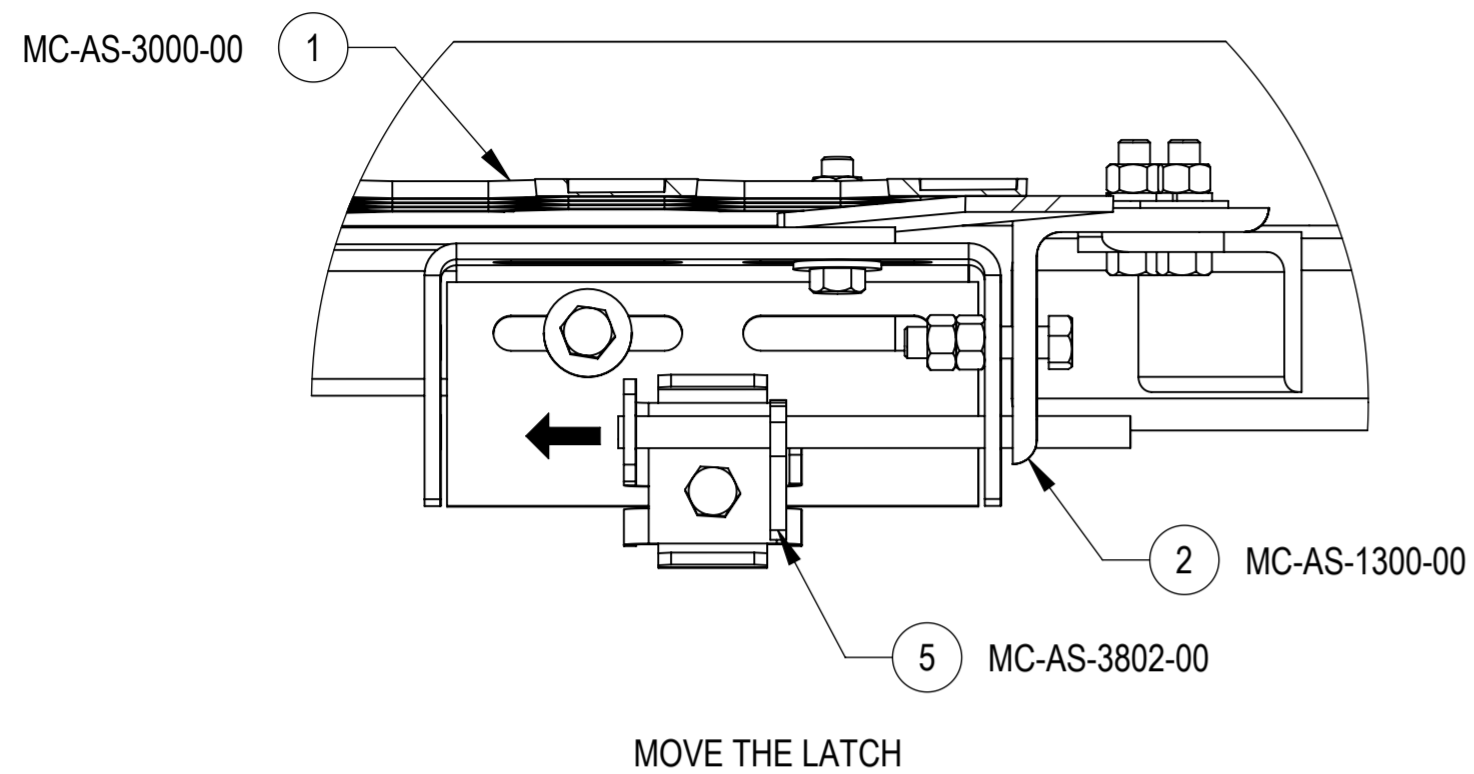


© 2023 CommScope, Inc. Confidential

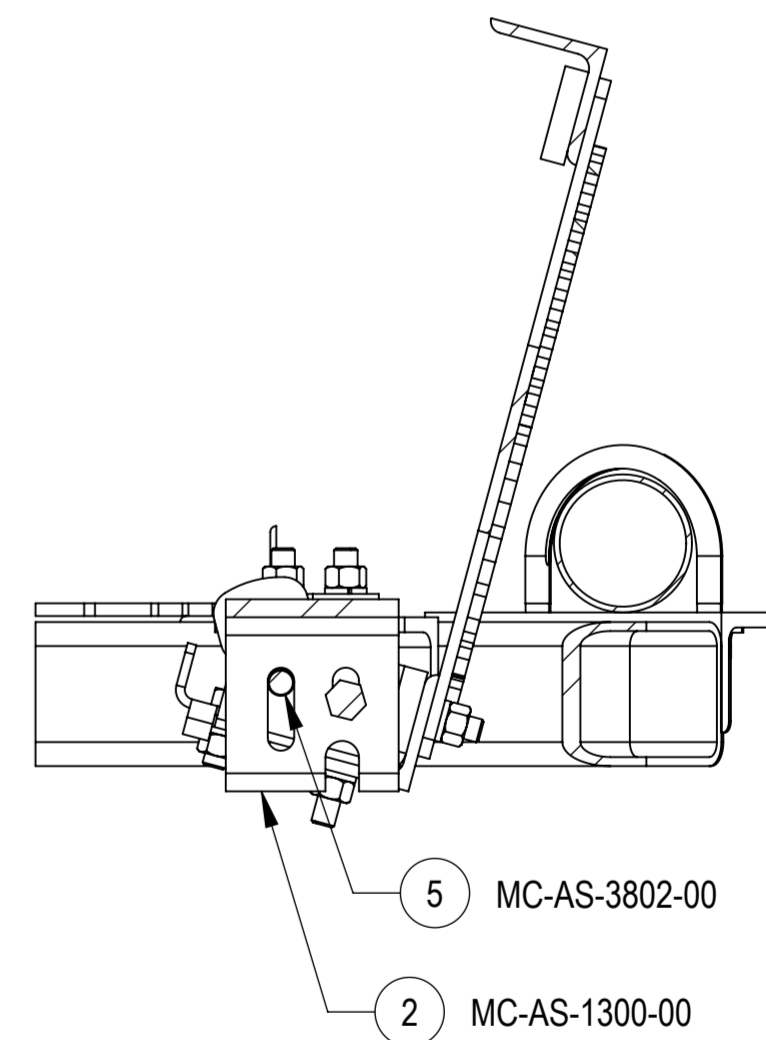
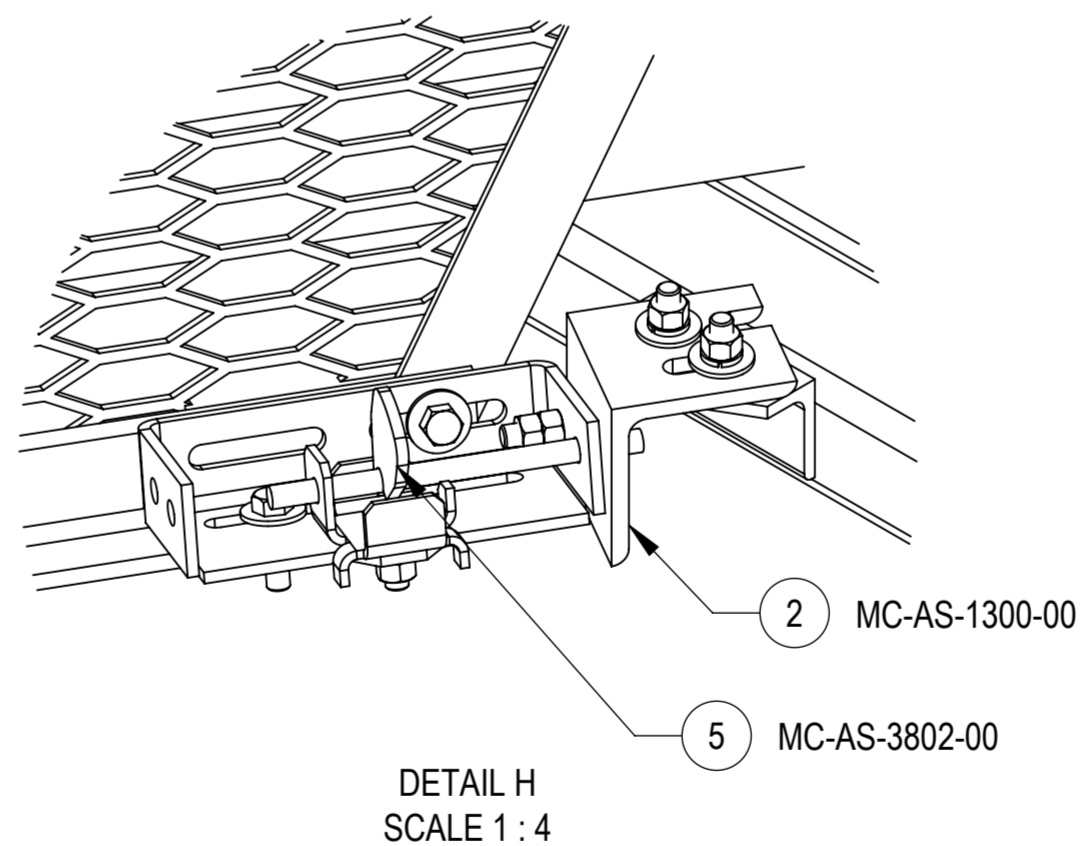
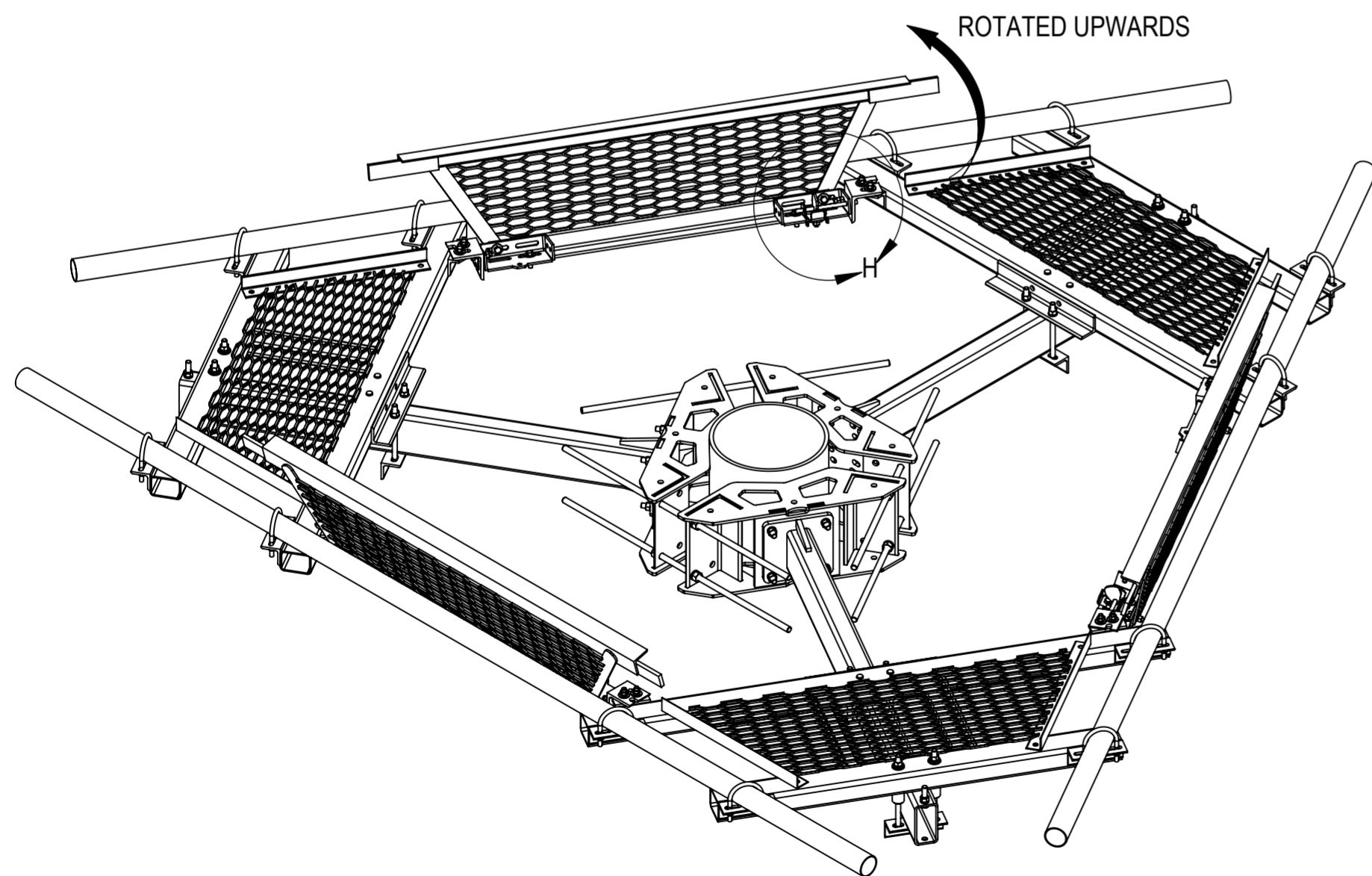
COMMSCOPE, INC. OF NORTH CAROLINA				
TITLE ADJUSTABLE PLATFORM WALKWAY-KIT				
SIZE A2	SCALE 1:20	DOCUMENT NO. MC-WKA		
		DRAWING		SHEET
		VERSION	STATUS	REVISION
		00	RE	A
				SHEET 2 OF 3

# WALKWAY ADJUSTMENT

STEP 1: MOVE THE LATCH (MC-AS-3802-00) TO THE OTHER POSITION UNTIL THE WALKWAY CAN BE ROTATED FREELY.



STEP 2: ROTATE THE WALKWAY TO 105.5 DEGREE UPWARDS, AND THEN PUSH THE LATCH (MC-AS-3802-00) BACK TO THE CORRESPONDING HOLE OF ANGLE PLATE (MC-AS-1300-00).



COMMSCOPE, INC. OF NORTH CAROLINA				
TITLE ADJUSTABLE PLATFORM WALKWAY-KIT				
SIZE A2	SCALE 1:20	DOCUMENT NO. MC-WKA		
		DRAWING		SHEET
		VERSION	STATUS	REVISION
		00	RE	A
				SHEET 3 OF 3