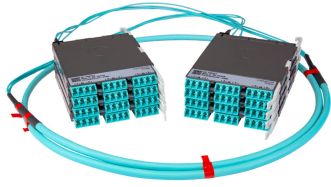


PPLUGGRLCLCN



Propel ULL Singlemode Cabled Module, 12x16 duplex LC Propel module on End A to 12x16 on End B, 192 fiber Plenum Trunk, Method B Enhanced

- This component requires 4 of the 12 lanes on the Propel Panel blade
- Ultra-low loss (ULL) with Method B Enhanced polarity
- End A module can be installed from rear of panel
- Serialized QR code provides easy access to factory optical test results

Product Classification

Regional Availability	Asia Australia/New Zealand EMEA Latin America North America
Portfolio	SYSTIMAX®
Product Type	Fiber cabled module
Product Brand	Propel
Product Series	PPL
Ordering Note	End B module is the same module as End A For lengths greater than 999 ft (304 m), orders must be in meters Maximum length is 400 meters

General Specifications

Configuration Type	PROPEL Module to PROPEL Module
Cable Color	Yellow
Cable Type	Trunk Cable - Plenum
Interface, front	LC/UPC
Interface Feature, front	Duplex Shuttered
Interface Color, front	Blue
Interface, rear	LC/UPC
Interface Feature, rear	Duplex Shuttered
Interface Color, rear	Blue
Module Size, end A	16 fiber
Module Size, end B	16 fiber
Module Quantity, end A	12
Module Quantity, end B	12
Polarity	Method B Enhanced (ULL)
Total Fibers, quantity	192

PPLUGGRLCLCN

Total Ports, quantity, front 96

Total Ports, quantity, rear 96

Dimensions

Height 11 mm | 0.433 in

Width 131 mm | 5.157 in

Depth 170 mm | 6.693 in

Breakout Length, end B 23 in

Cable Assembly Length Range (m) 1 – 400

Cable Assembly Length Range (ft) 2 – 999

Ordering Tree



Optical Specifications

Fiber Mode Singlemode

Fiber Type OS2

Insertion Loss, maximum 0.6 dB

Environmental Specifications

Qualification Standards IEC 61753-1 | TIA-568.3-D

Safety Standard c-UL-us

Packaging and Weights

Packaging quantity 1

Regulatory Compliance/Certifications

Agency **Classification**

PPLUGGRLCLCN

CHINA-ROHS	Above maximum concentration value
ROHS	Compliant/Exempted
UK-ROHS	Compliant/Exempted



Included Products

760251021 P-192-MP-8G1-F16YL	-	Plenum MPO Trunk Cable, 192 fiber multi-unit with 16 fiber subunits
---------------------------------	---	---