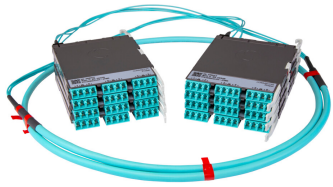


PPLUGGRLCLCN



Propel ULL Singlemode Cabled Module, 12x16 duplex LC Propel module on End A to 12x16 on End B, 192 fiber Plenum Trunk, Method B Enhanced

- This component requires 4 of the 12 lanes on the Propel Panel blade
- Ultra-low loss (ULL) with Method B Enhanced polarity
- End A module can be installed from rear of panel
- Serialized QR code provides easy access to factory optical test results

Product Classification

| | |
|------------------------------|---|
| Regional Availability | Asia Australia/New Zealand EMEA Latin America North America |
| Portfolio | SYSTIMAX® |
| Product Type | Fiber cabled module |
| Product Brand | Propel |
| Product Series | PPL |
| Ordering Note | End B module is the same module as End A For lengths greater than 999 ft (304 m), orders must be in meters Maximum length is 400 meters |

General Specifications

| | |
|---------------------------------|--------------------------------|
| Configuration Type | PROPEL Module to PROPEL Module |
| Cable Color | Yellow |
| Cable Type | Trunk Cable - Plenum |
| Interface, front | LC/UPC |
| Interface Feature, front | Duplex Shuttered |
| Interface Color, front | Blue |
| Interface, rear | LC/UPC |
| Interface Feature, rear | Duplex Shuttered |
| Interface Color, rear | Blue |
| Module Size, end A | 16 fiber |
| Module Size, end B | 16 fiber |
| Module Quantity, end A | 12 |
| Module Quantity, end B | 12 |
| Polarity | Method B Enhanced (ULL) |
| Total Fibers, quantity | 192 |

PPLUGGRLCLCN

Total Ports, quantity, front 96

Total Ports, quantity, rear 96

Dimensions

Height 11 mm | 0.433 in

Width 131 mm | 5.157 in

Depth 170 mm | 6.693 in

Breakout Length, end B 23 in

Cable Assembly Length Range (m) 1 – 400

Cable Assembly Length Range (ft) 2 – 999

Ordering Tree



Optical Specifications

Fiber Mode Singlemode

Fiber Type OS2

Insertion Loss, maximum 0.6 dB

Environmental Specifications

Qualification Standards IEC 61753-1 | TIA-568.3-D

Safety Standard c-UL-us

Packaging and Weights

Packaging quantity 1

Regulatory Compliance/Certifications

Agency **Classification**

PPLUGGRLCLCN

CHINA-ROHS Above maximum concentration value

ROHS Compliant/Exempted

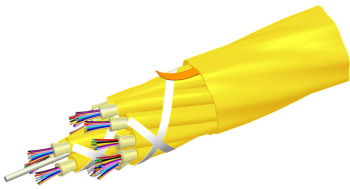
UK-ROHS Compliant/Exempted



Included Products

760251021 - Plenum MPO Trunk Cable, 192 fiber multi-unit with 16 fiber
P-192-MP-8G1-F16YL subunits

Plenum MPO Trunk Cable, 192 fiber multi-unit with 16 fiber subunits



Product Classification

| | |
|------------------------------|--|
| Regional Availability | Asia Australia/New Zealand Latin America Middle East /Africa North America |
| Portfolio | CommScope® |
| Product Type | Fiber indoor cable |
| Product Series | P-MP |

General Specifications

| | |
|-------------------------------------|-----------------|
| Cable Type | MPO trunk cable |
| Construction Type | Non-armored |
| Subunit Type | Gel-free |
| Jacket Color | Yellow |
| Jacket Marking | Feet |
| Subunit, quantity | 12 |
| Fibers per Subunit, quantity | 16 |
| Total Fiber Count | 192 |

Dimensions

| | |
|-------------------------------------|---------------------|
| Buffer Tube/Subunit Diameter | 3 mm 0.118 in |
| Diameter Over Jacket | 14.12 mm 0.556 in |

Mechanical Specifications

| | |
|--|---------------------|
| Minimum Bend Radius, loaded | 197 mm 7.756 in |
| Minimum Bend Radius, unloaded | 131 mm 5.157 in |
| Tensile Load, long term, maximum | 400 N 89.924 lbf |
| Tensile Load, short term, maximum | 1335 N 300.12 lbf |

760251021 | P-192-MP-8G1-F16YL

| | |
|--------------------------------|---------------------------------------|
| Compression | 10 N/mm 57.101 lb/in |
| Compression Test Method | FOTP-41 IEC 60794-1 E3 |
| Flex | 300 cycles |
| Flex Test Method | FOTP-104 IEC 60794-1 E6 |
| Impact | 0.74 N-m 6.55 in lb |
| Impact Test Method | FOTP-25 IEC 60794-1 E4 |
| Strain | See long and short term tensile loads |
| Strain Test Method | FOTP-33 IEC 60794-1 E1 |
| Twist | 10 cycles |
| Twist Test Method | FOTP-85 IEC 60794-1 E7 |
| Vertical Rise, maximum | 250 m 820.21 ft |

Optical Specifications

| | |
|-------------------|---------------------------|
| Fiber Type | G.657.A2/B2 G.657.A2/B2 |
|-------------------|---------------------------|

Environmental Specifications

| | |
|--------------------------------------|---------------------------------------|
| Installation temperature | 0 °C to +70 °C (+32 °F to +158 °F) |
| Operating Temperature | 0 °C to +70 °C (+32 °F to +158 °F) |
| Storage Temperature | -40 °C to +70 °C (-40 °F to +158 °F) |
| Cable Qualification Standards | ANSI/ICEA S-83-596 Telcordia GR-409 |
| Environmental Space | Plenum |
| Flame Test Listing | NEC OFNP (ETL) and c(ETL) |
| Flame Test Method | NFPA 130 NFPA 262 |

Environmental Test Specifications

| | |
|--------------------------------------|------------------------------------|
| Heat Age | 0 °C to +85 °C (+32 °F to +185 °F) |
| Heat Age Test Method | IEC 60794-1 F9 |
| Low High Bend | 0 °C to +70 °C (+32 °F to +158 °F) |
| Low High Bend Test Method | FOTP-37 IEC 60794-1 E11 |
| Temperature Cycle | 0 °C to +70 °C (+32 °F to +158 °F) |
| Temperature Cycle Test Method | FOTP-3 IEC 60794-1 F1 |

Packaging and Weights

760251021 | P-192-MP-8G1-F16YL

Cable weight

166 kg/km | 111.547 lb/kft

* Footnotes

Operating Temperature Specification applicable to non-terminated bulk fiber cable