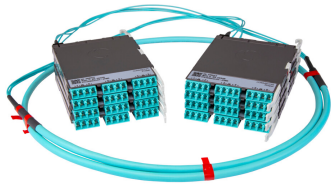


PPLU3VRLCLCQ



Propel ULL Multimode OM5 Cabled Module, 8x16 duplex LC Propel module on End A to 8x16 on End B, 128 fiber B2ca Trunk, Method B Enhanced

- This component requires 4 of the 12 lanes on the Propel Panel blade
- Ultra-low loss (ULL) with Method B Enhanced polarity
- End A module can be installed from rear of panel
- Serialized QR code provides easy access to factory optical test results

Product Classification

| | |
|------------------------------|---|
| Regional Availability | Asia Australia/New Zealand EMEA Latin America North America |
| Portfolio | SYSTIMAX® |
| Product Type | Fiber cabled module |
| Product Brand | Propel |
| Product Series | PPL |
| Ordering Note | End B module is the same module as End A For lengths greater than 999 ft (304 m), orders must be in meters Maximum length is 400 meters |

General Specifications

| | |
|---------------------------------|--------------------------------|
| Configuration Type | PROPEL Module to PROPEL Module |
| Cable Color | Lime green |
| Cable Type | Trunk Cable - LSZH Class B2ca |
| Interface, front | LC/UPC |
| Interface Feature, front | Duplex Shuttered |
| Interface Color, front | Lime green |
| Interface, rear | LC/UPC |
| Interface Feature, rear | Duplex Shuttered |
| Interface Color, rear | Lime green |
| Module Size, end A | 16 fiber |
| Module Size, end B | 16 fiber |
| Module Quantity, end A | 8 |
| Module Quantity, end B | 8 |
| Polarity | Method B Enhanced (ULL) |

PPLU3VRLCLCQ

| | |
|-------------------------------------|-----|
| Total Fibers, quantity | 128 |
| Total Ports, quantity, front | 64 |
| Total Ports, quantity, rear | 64 |

Dimensions

| | |
|---|-------------------|
| Height | 11 mm 0.433 in |
| Width | 131 mm 5.157 in |
| Depth | 170 mm 6.693 in |
| Breakout Length, end B | 23 in |
| Cable Assembly Length Range (m) | 1 – 400 |
| Cable Assembly Length Range (ft) | 2 – 999 |

Ordering Tree



Optical Specifications

| | |
|--------------------------------|-----------|
| Fiber Mode | Multimode |
| Fiber Type | OM5 |
| Insertion Loss, maximum | 0.35 dB |

Environmental Specifications

| | |
|--------------------------------|---------------------------|
| Qualification Standards | IEC 61753-1 TIA-568.3-D |
| Safety Standard | c-UL-us |

Packaging and Weights

| | |
|---------------------------|---|
| Packaging quantity | 1 |
|---------------------------|---|

Regulatory Compliance/Certifications

PPLU3VRLCLCQ

| Agency | Classification |
|------------|-----------------------------------|
| CHINA-ROHS | Above maximum concentration value |
| ROHS | Compliant/Exempted |
| UK-ROHS | Compliant |



Included Products

- 760251069 N-128-MP-5G-F16LM/30T/B2 – Fiber indoor cable, LazrSPEED® Low Smoke Zero Halogen Riser MPO Trunk Cable, 128 fiber with 16-fiber, 3.0mm subunits, Gel-free, Multimode OM5, Feet jacket marking, Lime green jacket color, B2ca flame rating