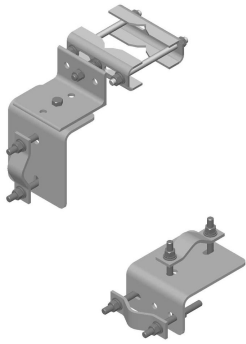


# SA-BU

---



Stiff Arm Bracket for 1-1/4 in to 3-1/2 in OD pipe

## Product Classification

<b>Portfolio</b>	CommScope®
<b>Product Type</b>	Stiff arm mount
<b>Ordering Note</b>	CommScope® standard product (Global)
<b>Warranty</b>	One year

## General Specifications

<b>Mounting</b>	Angle 60°, 114.3 mm (4-1/2 in)   Angle 90°, 114.3 mm (4-1/2 in)   Straight or tapered legs up to 114.3 mm (4-1/2 in) OD
<b>Pipe, quantity</b>	0

## Dimensions

<b>Height</b>	152.4 mm   6 in
<b>Width</b>	203.2 mm   8 in
<b>Length</b>	152.4 mm   6 in
<b>Mounting Diameter, maximum</b>	114.3 mm   4.5 in
<b>Pipe Outer Diameter</b>	0 mm   0 in

## Material Specifications

<b>Material Type</b>	Hot dip galvanized steel
----------------------	--------------------------

## Mechanical Specifications

<b>Wind Rating</b>	For Specifications, please contact <a href="mailto:steelproducts@commscope.com">steelproducts@commscope.com</a> or call 800-255-1479
--------------------	--

## Packaging and Weights

<b>Included</b>	Attachment hardware   Clamps
-----------------	------------------------------

# SA-BU

---

<b>Packaging quantity</b>	1
<b>Weight, net</b>	9.117 kg   20.1 lb

## Regulatory Compliance/Certifications

<b>Agency</b>	<b>Classification</b>
CHINA-ROHS	Above maximum concentration value
ISO 9001:2015	Designed, manufactured and/or distributed under this quality management system
ROHS	Compliant/Exempted
UK-ROHS	Compliant/Exempted



## \* Footnotes

<b>Warranty</b>	For more information, please consult our Product Warranty guidelines
<b>Wind Rating</b>	BWS—Base Wind Speed; FBC—Florida Building Code