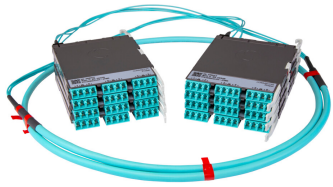


PPLU3G8LCLC8



Propel ULL Singlemode Cabled Module, 1x8 duplex LC Propel module on End A to 1x8 on End B, 8 fiber B2ca Trunk, Method B Enhanced

- This component requires 2 of the 12 lanes on the Propel Panel blade
- Ultra-low loss (ULL) with Method B Enhanced polarity
- End A module can be installed from rear of panel
- Serialized QR code provides easy access to factory optical test results

Product Classification

Regional Availability	Asia Australia/New Zealand EMEA Latin America North America
Portfolio	SYSTIMAX®
Product Type	Fiber cabled module
Product Brand	Propel
Product Series	PPL
Ordering Note	End B module is the same module as End A For lengths greater than 999 ft (304 m), orders must be in meters Maximum length is 400 meters

General Specifications

Configuration Type	PROPEL Module to PROPEL Module
Cable Color	Yellow
Cable Type	Trunk Cable - LSZH Class B2ca
Interface, front	LC/UPC
Interface Feature, front	Duplex Shuttered
Interface Color, front	Blue
Interface, rear	LC/UPC
Interface Feature, rear	Duplex Shuttered
Interface Color, rear	Blue
Module Size, end A	8 fiber
Module Size, end B	8 fiber
Module Quantity, end A	1
Module Quantity, end B	1
Polarity	Method B Enhanced (ULL)
Total Fibers, quantity	8

PPLU3G8LCLC8

CHINA-ROHS	Above maximum concentration value
ROHS	Compliant/Exempted
UK-ROHS	Compliant



Included Products

760254313 N-008-MP-8G1-F08YL/20T/B2	-	Fiber indoor cable, Low Smoke Zero Halogen Riser MPO Trunk with 2.0 mm Subunits, 8 fiber, Singlemode G.657.A2/B2, Feet jacket marking, Yellow jacket color, B2ca flame rating
--	---	---



Fiber indoor cable, Low Smoke Zero Halogen Riser MPO Trunk with 2.0 mm Subunits, 8 fiber, Singlemode G.657.A2/B2, Feet jacket marking, Yellow jacket color, B2ca flame rating

Product Classification

Regional Availability	Asia Australia/New Zealand EMEA
Portfolio	CommScope®
Product Type	Fiber indoor cable
Product Series	N-MP

General Specifications

Cable Type	MPO trunk cable
Construction Type	Non-armored
Subunit Type	Gel-free
Jacket Color	Yellow
Jacket Marking	Feet
Subunit, quantity	1
Total Fiber Count	8

Dimensions

Buffer Tube/Subunit Diameter	2 mm 0.079 in
Diameter Over Jacket	5.3 mm 0.209 in

Mechanical Specifications

Minimum Bend Radius, loaded	80 mm 3.15 in
Minimum Bend Radius, unloaded	53 mm 2.087 in
Tensile Load, long term, maximum	133 N 29.9 lbf
Tensile Load, short term, maximum	445 N 100.04 lbf
Compression	10 N/mm 57.101 lb/in

Compression Test Method	FOTP-41 IEC 60794-1 E3
Flex	25 cycles
Flex Test Method	FOTP-104 IEC 60794-1 E6
Impact	2.94 N-m 26.021 in lb
Impact Test Method	FOTP-25 IEC 60794-1 E4
Strain	See long and short term tensile loads
Strain Test Method	FOTP-33 IEC 60794-1 E1
Twist	10 cycles
Twist Test Method	FOTP-85 IEC 60794-1 E7
Vertical Rise, maximum	412 m 1,351.706 ft

Optical Specifications

Fiber Type	G.657.A2/B2
-------------------	-------------

Environmental Specifications

Installation temperature	0 °C to +60 °C (+32 °F to +140 °F)
Operating Temperature	0 °C to +70 °C (+32 °F to +158 °F)
Storage Temperature	-40 °C to +70 °C (-40 °F to +158 °F)
Cable Qualification Standards	ANSI/ICEA S-83-596 Telcordia GR-409
EN50575 CPR Cable EuroClass Fire Performance	B2ca
EN50575 CPR Cable EuroClass Smoke Rating	s1a
EN50575 CPR Cable EuroClass Droplets Rating	d0
EN50575 CPR Cable EuroClass Acidity Rating	a1
Environmental Space	Low Smoke Zero Halogen (LSZH)
Flame Test Method	IEC 60332-3 IEC 60754-2 IEC 61034-2

Environmental Test Specifications

Low High Bend	0 °C to +70 °C (+32 °F to +158 °F)
Low High Bend Test Method	FOTP-37 IEC 60794-1 E11
Temperature Cycle	0 °C to +70 °C (+32 °F to +158 °F)
Temperature Cycle Test Method	FOTP-3 IEC 60794-1 F1

Packaging and Weights

760254313 | N-008-MP-8G1-F08YL/20T/B2

Cable weight

33 kg/km | 22.175 lb/kft

* Footnotes

Operating Temperature Specification applicable to non-terminated bulk fiber cable