

4

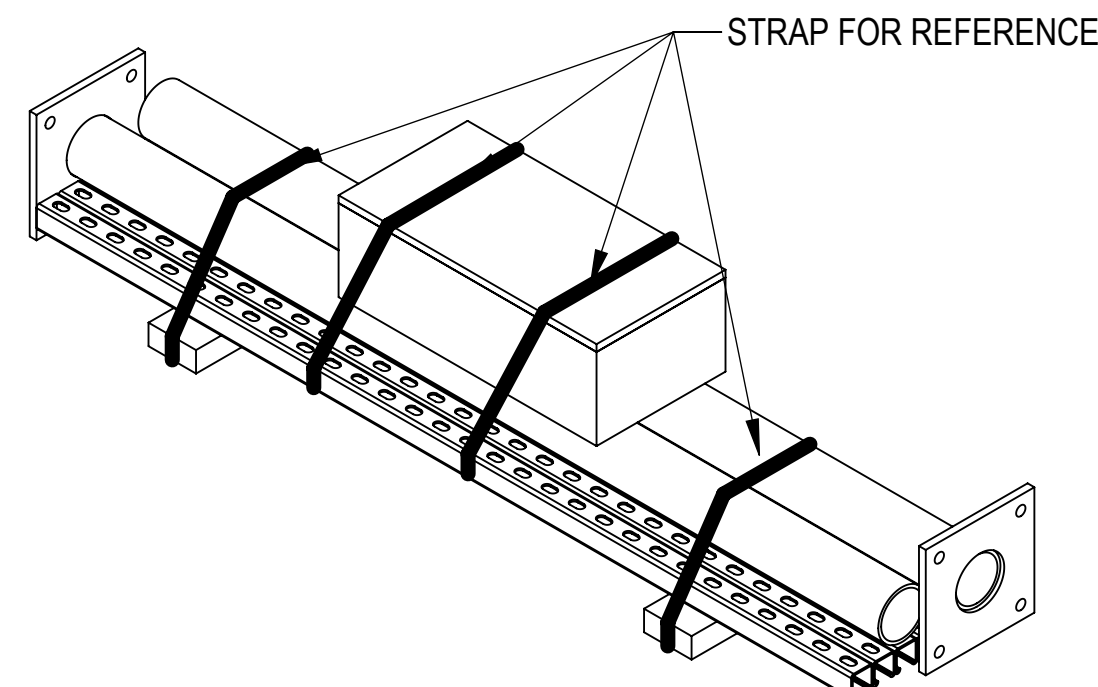
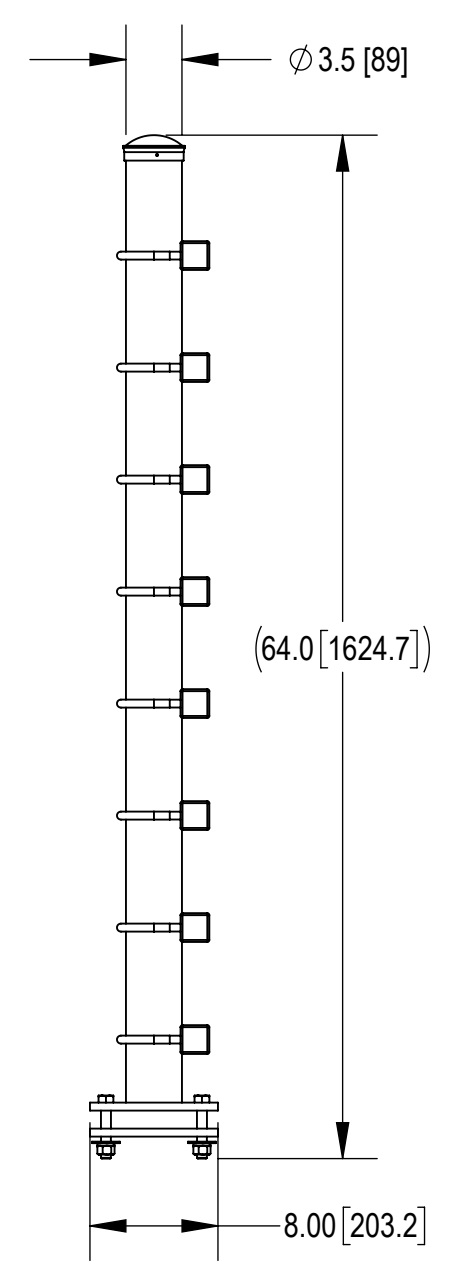
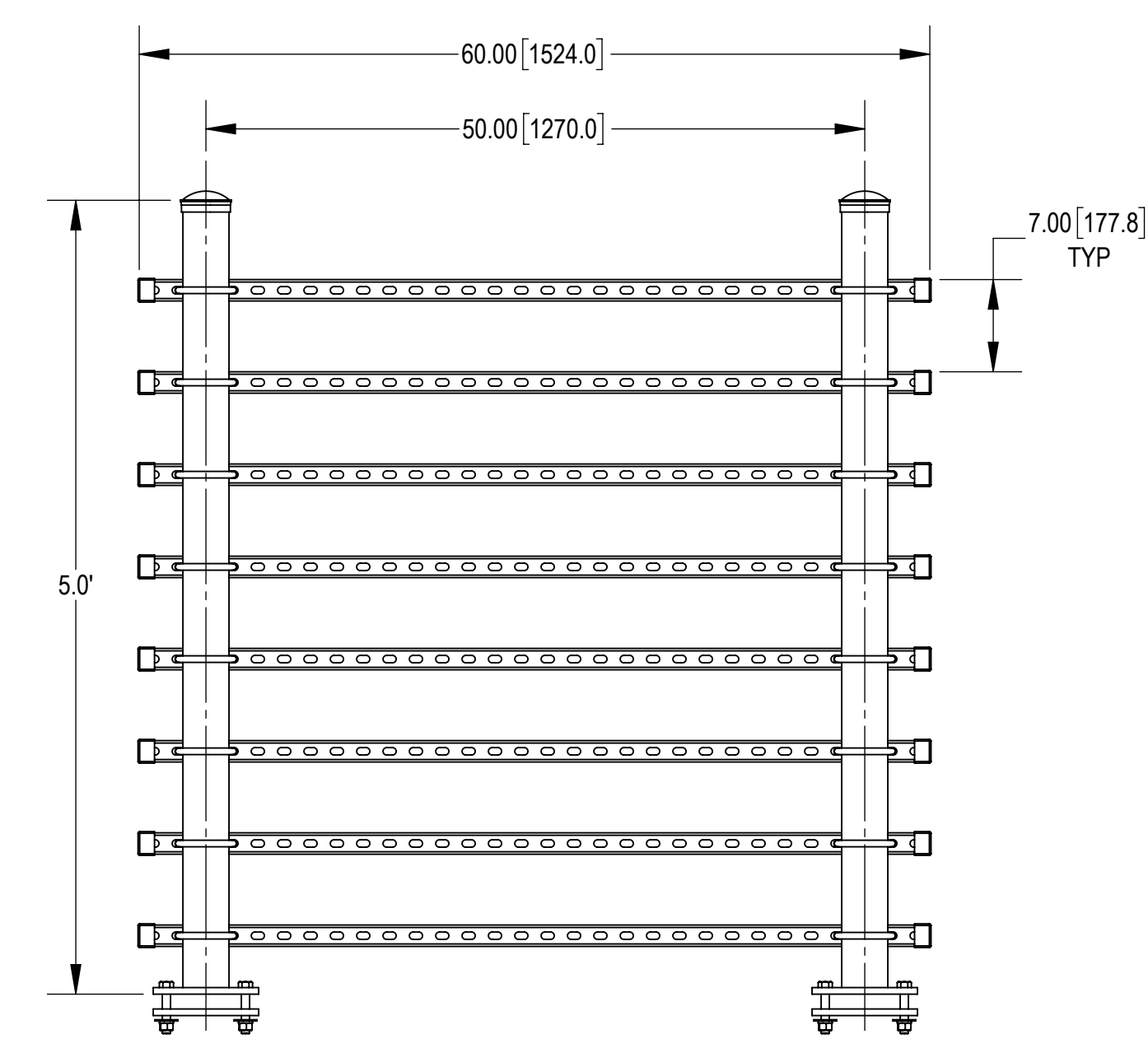
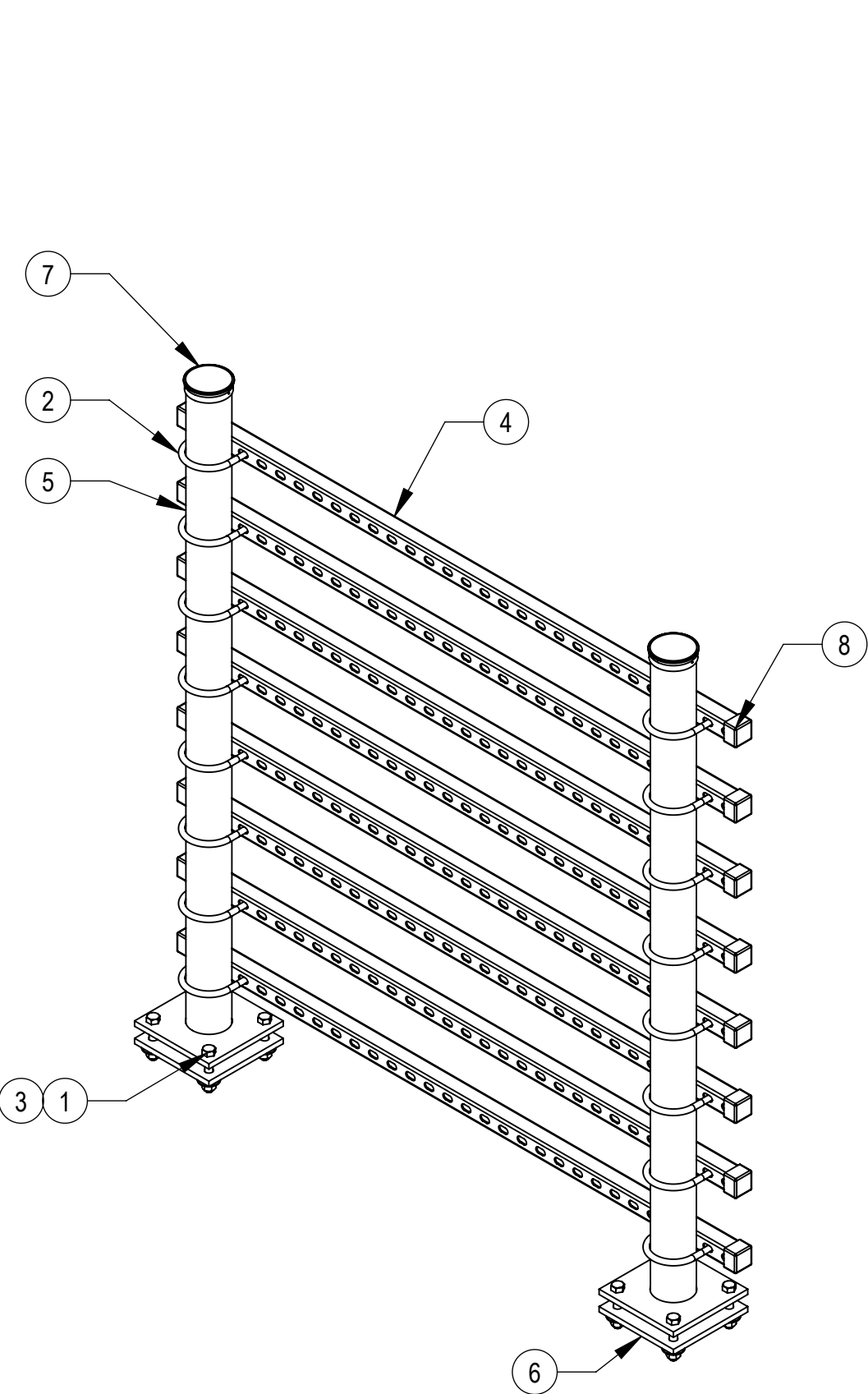
3

2

1

- 1.0 GENERAL NOTES
 1.1 ALL METRIC DIMENSIONS ARE IN BRACKETS [X.X]
 1.2 FOR PATENT INFO: <https://www.cs-pat.com>
 2.0 DESIGN NOTES
 3.0 MANUFACTURING/SPECIAL REQUIREMENTS
 3.1 TIGHTEN ALL BOLTS SECURING FLAT PLATES BY THE TURN-OF-NUT METHOD. TIGHTEN ALL U-BOLTS USING TURN-OF-NUT METHOD WITH ATTENTION TO LEAVE EQUAL DISTANCE AND EQUAL FORCE ON EACH LEG OF THE U-BOLT.
 4.0 TEST
 5.0 PACKAGING
 5.1 PACKAGING SHALL MEET COMMSCOPE REQUIREMENTS PER DOCUMENT IS-PL-3005
 5.2 PRINTED DOCUMENT TO BE PLACED INSIDE POLYBAG AND THEN IN SHIPPING CONTAINER
 5.3 EXTRA HARDWARE MAYBE SUPPLIED, BAGGED AND SHIPPED

REVISIONS			
REV.	DESCRIPTION	DATE	APPROVED
A	INITIAL RELEASE	YMENG 15JUN23	BA1025 40173442CMO
B	ADDED PACKING VIEW	YMENG 10JUL23	BA1025 40173442CMO



PACKING VIEW

COMPONENT PART NUMBERS PROVIDED FOR ASSEMBLY PURPOSES; INDIVIDUAL COMPONENTS MAY BE SHIPPED AS PARTS WITHIN AN INCLUDED KIT.

ITEM	PART NO.	DESCRIPTION	QTY.	WEIGHT	NOTE NO.
1	GB-05345	5/8" X 3-1/2" GALV BOLT KIT	8	0.39 LBS	
2	GUB-4355	1/2" X 3-5/8" X 5" GALV U-BOLT	16	0.71 LBS	
3	GWF-05	5/8" GALV FLAT WASHER, 1.70D	8	0.06 LBS	
4	MT50460	SQ. SUPPORT RAIL, 1-5/8" X 60" LONG	8	10.25 LBS	
5	MTC4045-02	WELDMENT, 5" PIPE	2	45.49 LBS	
6	MTC4045-12	BASE PLATE, 3" PIPE	2	7.47 LBS	
7	PC-034	PIPE CAP 3-1/2"	2	0.66 LBS	
8	PTCR01	END CAP	16	0.05 LBS	

DENSITY	208.74	lbs/in ³
MASS	747.47	lbs
VOLUME	8984.05	in ³
SURFACE AREA		in ²
HEIGHT	64.0"	
LENGTH	60.0"	
WIDTH	8.0"	

© 2023 CommScope, Inc.

COMMSCOPE, INC. OF NORTH CAROLINA

TOLERANCES: 1 PLACE .X[X] ± 0.2[6.3], 2 PLACE .XX[X] ± 0.12[3.0], 3 PLACE .XXX[X] ± 0.060[1.5], ANGLES ± 2°

SAP MATERIAL MASTER: PT-S-0505-08

FINISH: MATERIAL

UNLESS OTHERWISE SPECIFIED DIMENSIONS ARE IN INCHES INTERPRET PER ANSI Y 14.5M-1994

NAME	DATE	TITLE
CE YMENG	15JUN23	H-FRAME, BS, 5'TALL, 5"WIDE, 8-RUNGS
RW YMENG	07/10/2023	
AD JX1030	07/23/2023	
RE YMENG	07/23/2023	

SCALE: 1:12 DOCUMENT NO. PT-S-0505-08

ECN 40173442CMO

SIZE	Auth Group	INSL	MODEL			DRAWING			SHEET
C			VERSION	STATUS	REVISION	VERSION	STATUS	REVISION	1 OF 2
			00	RE	A	02	RE	B	

4

3

2

1

4

3

2

1

D

D

C

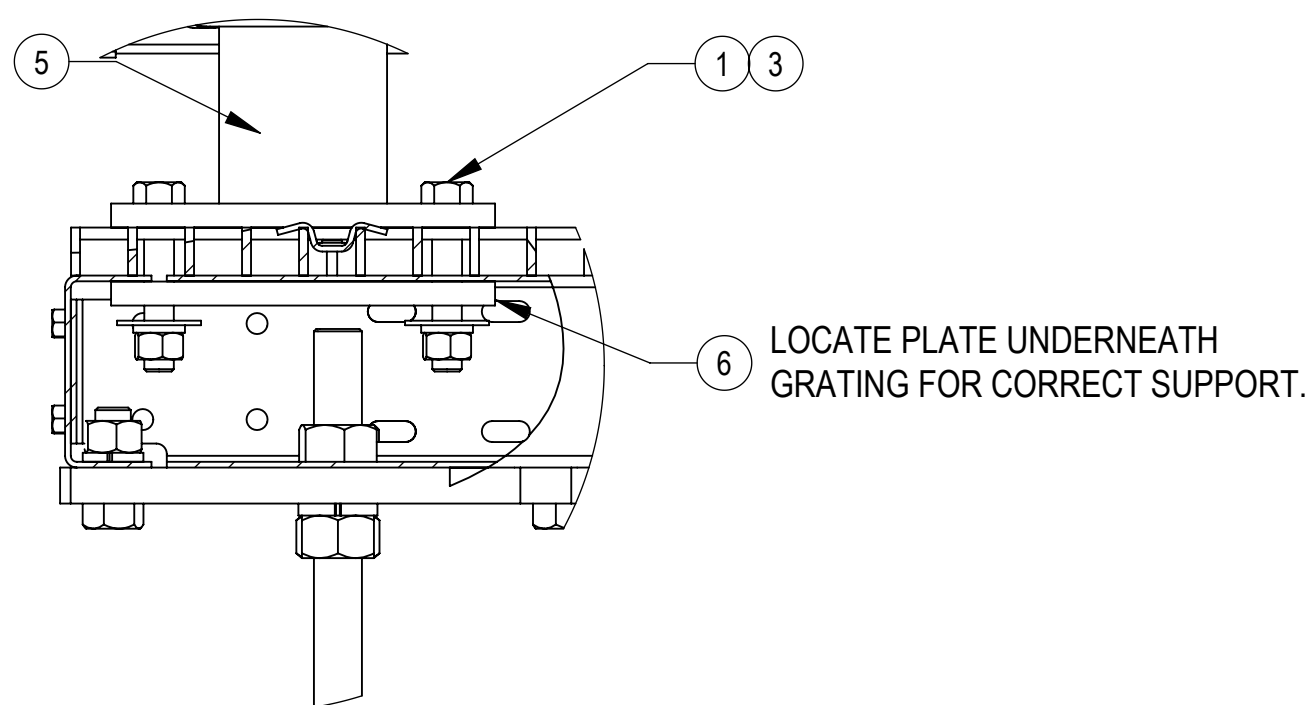
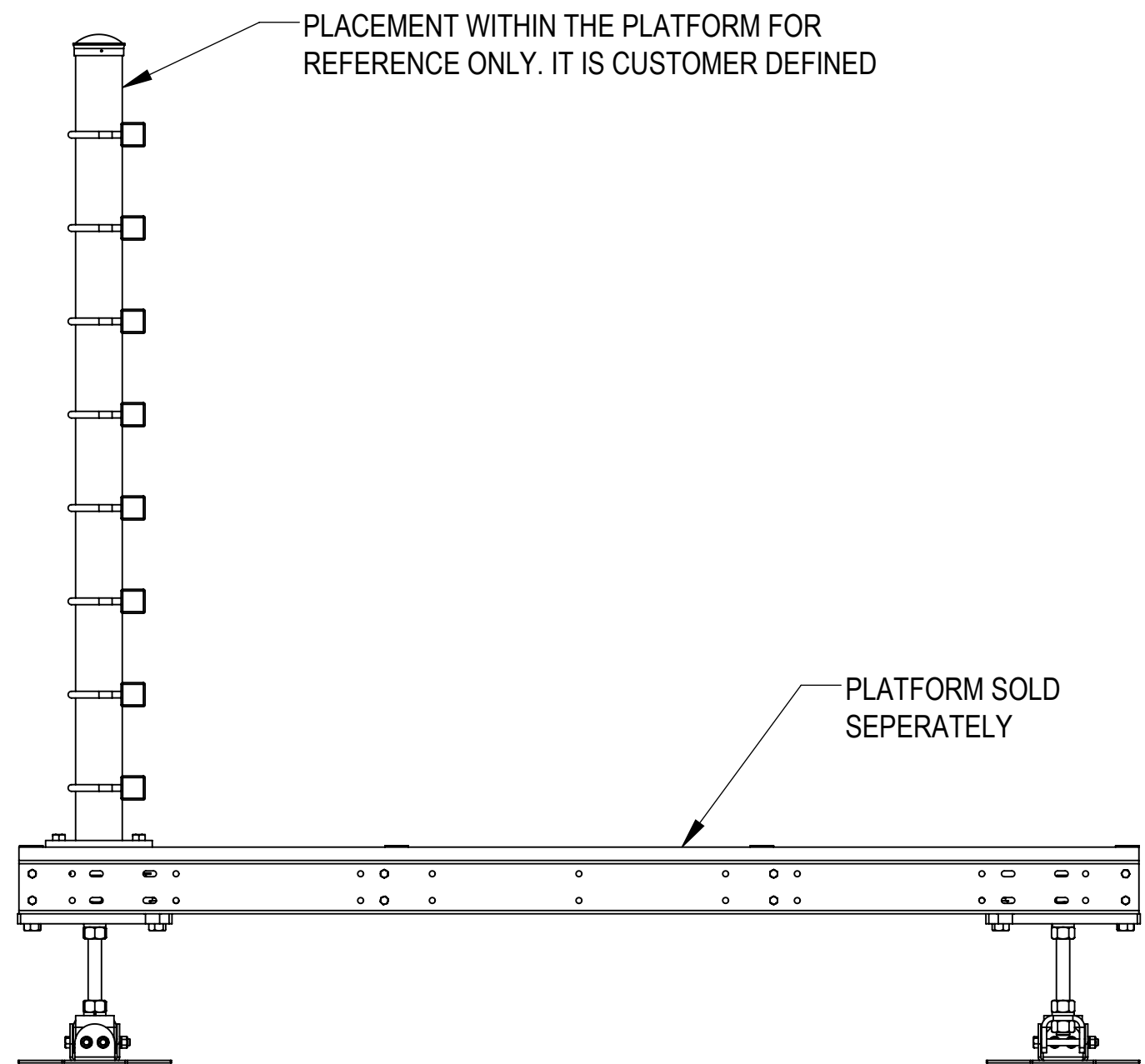
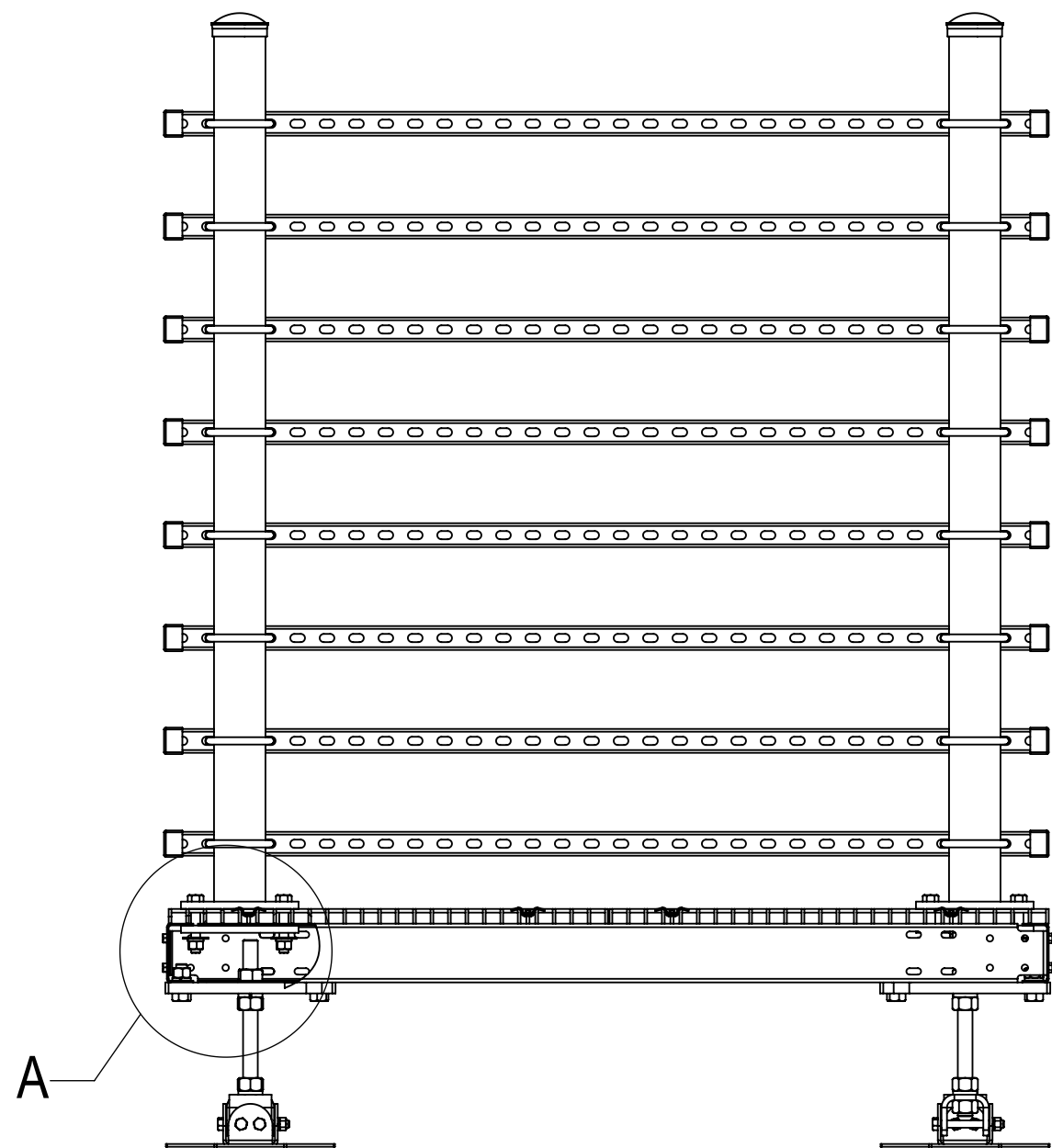
C

B

B

A

A



DETAIL A
SCALE 1 : 4

6 LOCATE PLATE UNDERNEATH GRATING FOR CORRECT SUPPORT.

COMMSCOPE, INC. OF NORTH CAROLINA				
TITLE H-FRAME,BS,5'TALL,5'WIDE,8-RUNGS				
SIZE C	SCALE 1:12	DOCUMENT NO. PT-S-0505-08		
		DRAWING		SHEET 2 OF 2
		VERSION 02	STATUS RE	

4

3

2

1

