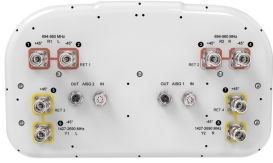


# RRZZ-65B-R4N39-V1



8-port sector antenna, 4x 694–960 and 4x 1427–2690, 65° HPBW, 4x RET

- All Internal RET actuators are connected in “Cascaded SRET” configuration
- Supports re-configurable antenna sharing capability enabling control of the internal RET system using up to two separate RET compatible OEM radios
- Array configuration provides capability for 4T4R (4x MIMO) on Low band and High band
- Excellent wind loading characteristics

## General Specifications

<b>Antenna Type</b>	Sector
<b>Band</b>	Multiband
<b>Color</b>	Light Gray (RAL 7035)
<b>Grounding Type</b>	RF connector inner conductor and body grounded to reflector and mounting bracket
<b>Performance Note</b>	Outdoor usage
<b>Radome Material</b>	Fiberglass, UV resistant
<b>Reflector Material</b>	Aluminum
<b>RF Connector Interface</b>	4.3-10 Female
<b>RF Connector Quantity, mid band</b>	4
<b>RF Connector Quantity, low band</b>	4
<b>RF Connector Quantity, total</b>	8

## Remote Electrical Tilt (RET) Information

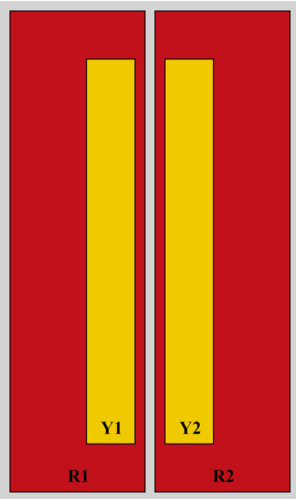
<b>RET Hardware</b>	CommRET v2
<b>RET Interface</b>	8-pin DIN Female   8-pin DIN Male
<b>RET Interface, quantity</b>	2 female   2 male
<b>Input Voltage</b>	10–30 Vdc
<b>Internal RET</b>	Low band (2)   Mid band (2)
<b>Power Consumption, active state, maximum</b>	8 W
<b>Power Consumption, idle state, maximum</b>	1 W
<b>Protocol</b>	3GPP/AISG 2.0 (Single RET)

## Dimensions

# RRZZ-65B-R4N39-V1

<b>Width</b>	395 mm   15.551 in
<b>Depth</b>	228 mm   8.976 in
<b>Length</b>	2100 mm   82.677 in
<b>Net Weight, antenna only</b>	30.5 kg   67.241 lb

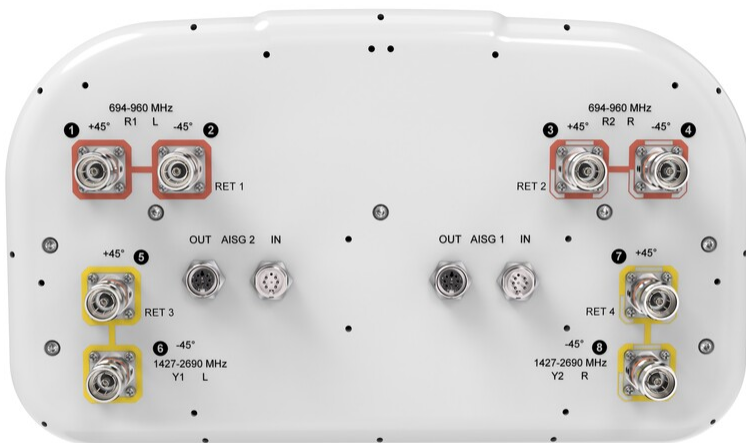
## Array Layout



RF Connector	Array ID	Frequency (MHz)	RET (SRET)	AISG RET UID
1 - 2	R1	694-960	1	CPxxxxxxxxxxxxxxxxR1
3 - 4	R2	694-960	2	CPxxxxxxxxxxxxxxxxR2
5 - 6	Y1	1427-2690	3	CPxxxxxxxxxxxxxxxxY1
7 - 8	Y2	1427-2690	4	CPxxxxxxxxxxxxxxxxY2

(Sizes of colored boxes are not true depictions of array sizes)

## Port Configuration



# RRZZ-65B-R4N39-V1

## Electrical Specifications

<b>Impedance</b>	50 ohm
<b>Operating Frequency Band</b>	1427 – 1518 MHz   1695 – 2690 MHz   694 – 960 MHz
<b>Polarization</b>	±45°
<b>Total Input Power, maximum</b>	1,100 W @ 50 °C

## Electrical Specifications

	<b>R1,R2</b>	<b>R1,R2</b>	<b>R1,R2</b>	<b>Y1,Y2</b>	<b>Y1,Y2</b>	<b>Y1,Y2</b>	<b>Y1,Y2</b>	<b>Y1,Y2</b>
<b>Frequency Band, MHz</b>	<b>694–790</b>	<b>790–890</b>	<b>890–960</b>	<b>1427–1518</b>	<b>1695–1920</b>	<b>1920–2180</b>	<b>2300–2500</b>	<b>2490–2690</b>
<b>RF Port</b>	1,2,3,4	1,2,3,4	1,2,3,4	5,6,7,8	5,6,7,8	5,6,7,8	5,6,7,8	5,6,7,8
<b>Gain, dBi</b>	14	15	15.3	16.1	17.8	18.2	18.6	18.7
<b>Beamwidth, Horizontal, degrees</b>	67	56	52	58	56	55	64	56
<b>Beamwidth, Vertical, degrees</b>	10.5	9.3	8.6	6.7	5.7	5.1	4.5	4.2
<b>Beam Tilt, degrees</b>	2–12	2–12	2–12	2–12	2–12	2–12	2–12	2–12
<b>USLS (First Lobe), dB</b>	17	16	15	15	17	18	18	18
<b>Front-to-Back Ratio at 180°, dB</b>	32	31	30	33	34	30	27	29
<b>Isolation, Cross Polarization, dB</b>	25	25	25	26	26	26	26	26
<b>Isolation, Inter-band, dB</b>	25	25	25	27	27	27	27	27
<b>VSWR   Return loss, dB</b>	1.5 14.0	1.5 14.0	1.5 14.0	1.5 14.0	1.5 14.0	1.5 14.0	1.5 14.0	1.5 14.0
<b>PIM, 3rd Order, 2 x 20 W, dBc</b>	-153	-153	-153	-153	-153	-153	-153	-153
<b>Input Power per Port at 50°C, maximum, watts</b>	300	300	300	250	250	250	200	200

## Electrical Specifications, BASTA

	<b>694–790</b>	<b>790–890</b>	<b>890–960</b>	<b>1427–1518</b>	<b>1695–1920</b>	<b>1920–2180</b>	<b>2300–2500</b>	<b>2490–2690</b>
<b>Gain by all Beam Tilts, average, dBi</b>	13.7	14.6	15	15.7	17.2	17.8	18.2	18.2
<b>Gain by all Beam Tilts Tolerance, dB</b>	±0.5	±0.5	±0.4	±0.8	±1.1	±0.4	±0.5	±0.6
<b>Beamwidth, Horizontal Tolerance, degrees</b>	±8	±5	±5	±9	±11	±17	±9	±8
<b>Beamwidth, Vertical Tolerance, degrees</b>	±0.7	±0.7	±0.6	±0.3	±0.4	±0.4	±0.3	±0.2
<b>Front-to-Back Total Power at</b>	20	21	20	21	26	25	23	25

# RRZZ-65B-R4N39-V1

180° ± 30°, dB

<b>CPR at Boresight, dB</b>	23	22	20	18	19	17	15	13
<b>CPR at Sector, dB</b>	8	5	6	5	2	4	6	5

## Mechanical Specifications

<b>Wind Loading @ Velocity, frontal</b>	320.0 N @ 150 km/h (71.9 lbf @ 150 km/h)
<b>Wind Loading @ Velocity, lateral</b>	288.0 N @ 150 km/h (64.7 lbf @ 150 km/h)
<b>Wind Loading @ Velocity, maximum</b>	643.0 N @ 150 km/h (144.6 lbf @ 150 km/h)
<b>Wind Loading @ Velocity, rear</b>	366.0 N @ 150 km/h (82.3 lbf @ 150 km/h)
<b>Wind Speed, maximum</b>	241 km/h (150 mph)

## Packaging and Weights

<b>Width, packed</b>	505 mm   19.882 in
<b>Depth, packed</b>	386 mm   15.197 in
<b>Length, packed</b>	2243 mm   88.307 in
<b>Weight, gross</b>	41.7 kg   91.933 lb

## Regulatory Compliance/Certifications

<b>Agency</b>	<b>Classification</b>
CHINA-ROHS	Above maximum concentration value
ISO 9001:2015	Designed, manufactured and/or distributed under this quality management system
ROHS	Compliant/Exempted
UK-ROHS	Compliant/Exempted



## Included Products

BSAMNT-F	–	Wide Profile Antenna Fixed Tilt Mounting Kit for 2.4 - 4.5 in (60 - 115 mm) OD round members.
----------	---	---

## \* Footnotes

<b>Performance Note</b>	Severe environmental conditions may degrade optimum performance
-------------------------	---

# BSAMNT-F



Wide Profile Antenna Fixed Tilt Mounting Kit for 2.4 - 4.5 in (60 - 115 mm) OD round members.

## Product Classification

**Product Type** Fixed tilt mounting kit

## General Specifications

**Application** Outdoor

**Color** Silver

## Dimensions

**Compatible Diameter, maximum** 114.3 mm | 4.5 in

**Compatible Diameter, minimum** 61 mm | 2.402 in

**Weight, net** 3.6 kg | 7.937 lb

## Material Specifications

**Material Type** Galvanized steel

## Packaging and Weights

**Included** Brackets | Hardware

**Packaging quantity** 1

**Weight, gross** 3.8 kg | 8.378 lb

## Regulatory Compliance/Certifications

Agency	Classification
CHINA-ROHS	Below maximum concentration value
ISO 9001:2015	Designed, manufactured and/or distributed under this quality management system
REACH-SVHC	Compliant as per SVHC revision on <a href="http://www.commscope.com/ProductCompliance">www.commscope.com/ProductCompliance</a>
ROHS	Compliant
UK-ROHS	Compliant

# BSAMNT-F

---

