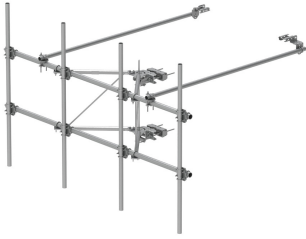


# MTC3752T3HDX



G22HDX Series High Capacity Three Sector Frame Kit for Towers, 12.5 ft x 2.88 in OD face pipes, includes twelve 96 in x 2.88 OD antenna pipes plus six 96 in RRU Pipes

## Product Classification

<b>Product Type</b>	High capacity Tower sector frame
<b>Ordering Note</b>	NSTD445 Compliant

## General Specifications

<b>Mounting</b>	Angle 60°, 203.2 mm (8 in)   Straight or tapered legs up to 203.2 mm (8 in) OD
<b>Patent Number</b>	Patent pending
<b>Pipe, quantity</b>	18
<b>Tower Taper</b>	Non-tapered   Tapered

## Dimensions

<b>Height</b>	2,438.4 mm   96 in
<b>Face Width</b>	3.81 m   12.5 ft
<b>Width</b>	3,810 mm   150 in
<b>Pipe Length</b>	2,438.4 mm   96 in
<b>Face Support Pipe Diameter</b>	73.025 mm   2.875 in
<b>Mounting Diameter, maximum</b>	218.44 mm   8.6 in
<b>Mounting Diameter, minimum</b>	50.8 mm   2 in
<b>Pipe Outer Diameter</b>	73.025 mm   2.875 in
<b>Stand-off Distance</b>	1,092.2 mm   43 in

## Material Specifications

<b>Material Type</b>	Hot dip galvanized steel
----------------------	--------------------------

## Mechanical Specifications

<b>Wind Rating</b>	For Specifications, please contact <a href="mailto:steelproducts@commscope.com">steelproducts@commscope.com</a> or call 800-255-1479
<b>Wind Rating Test Method</b>	TIA/EIA-222-G

# MTC3752T3HDX

---

## Packaging and Weights

<b>Included</b>	Frame   Pipe mounts   Plain end pipes (12)   RRU Pipes (6)   Stiff arm   Tower attachment
<b>Packaging quantity</b>	1
<b>Weight, net</b>	913.989 kg   2015 lb

## Regulatory Compliance/Certifications

<b>Agency</b>	<b>Classification</b>
ISO 9001:2015	Designed, manufactured and/or distributed under this quality management system



## \* Footnotes

<b>Wind Rating</b>	BWS—Base Wind Speed; FBC—Florida Building Code
--------------------	--