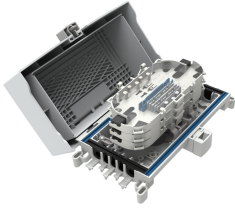


SEC4-B5A1H2BA000



NOVUX™ SEC Closure, splice only, no adapters, 1x factory-installed 1:2 bare splitter mounting included, gray

- Design optimized for FTTH façade applications with gray and black colors
- Agnostic to connectivity technologies: splice, connector, field-installable connector for agility and flexibility
- Innovative removable hinge design allows cover to open from the left, right, or top
- Identification plate for either QR code or customer logo
- QR code and CommScope cTrak® app for one-click access to all product information

Product Classification

Regional Availability	EMEA
Regional Availability Note	Contact your local CommScope representative for specific availability
Product Type	In-line, rectangular fiber closure
Product Brand	NOVUX™
Product Series	SEC100

General Specifications

Cable Capacity, Branch	2 Round 8.0–12.0 mm (0.31–0.47 in)
Cable Capacity, Drop	6 Round 3.0–6.0 mm (0.12–0.23 in) for pre-connectorized cables 6 Round 3.0–7.0 mm (0.12–0.27 in)
Cable Capacity, Feeder	2 Round 8.0–12.0 mm (0.31–0.47 in)
Cable Ports Quantity, total	10 round ports
Cable Sealing Type	Gasket/grommet configuration
Closure Sealing Type	Hinged with lock
Closure Style	In-line
Color	Black
Mounting	Facade Wall
Network Area Type	Drop
Port Type	No adapter No adapter
Splice Tray Included, quantity	1
Splice Tray Type Included	18-way, heat shrink
Splices per Tray, quantity	18
Splicing Capacity, maximum	54

SEC4-B5A1H2BA000

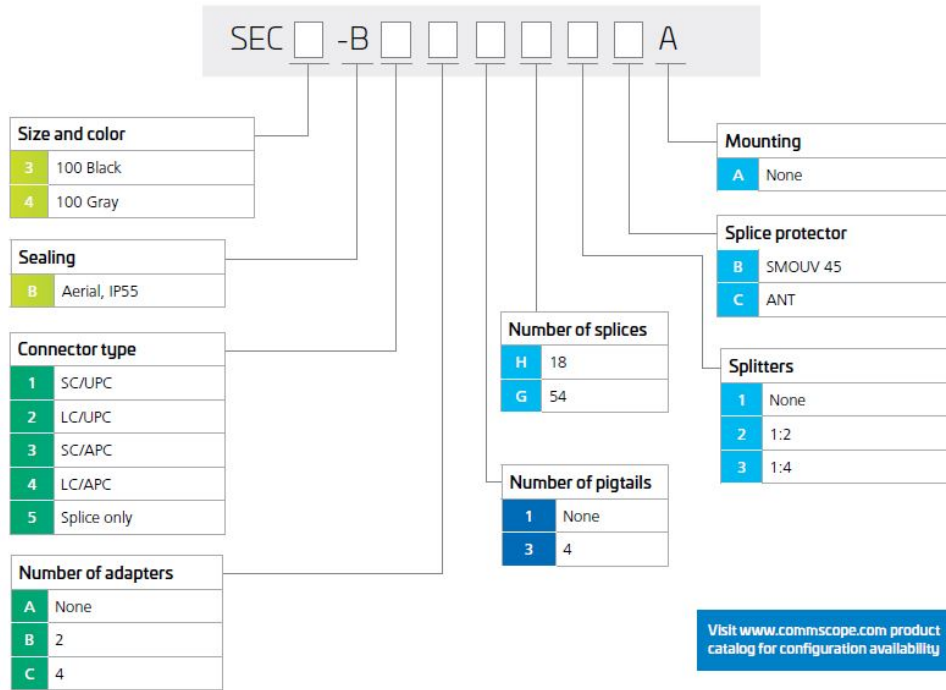
Splicing Capacity, Single Fusion, maximum	54
Splicing Type, Supported	Single fusion
Split Ratio	Symmetrical
Splitter Type	1 x 2
Splitter, quantity	1

Dimensions

Height	130 mm 5.118 in
Width	216 mm 8.504 in
Depth	87 mm 3.425 in

Ordering Tree

Ordering information



Optical Specifications

Fiber Type	G.657.A1 G.657.A2 G.657.B3
-------------------	--------------------------------

Environmental Specifications

Environmental Space	Facade Outdoor
----------------------------	------------------

SEC4-B5A1H2BA000

Qualification Standards	IP55
UV Resistance	UV stabilized
Packaging and Weights	
Packaging quantity	1
Packaging Type	Box Carton