

4

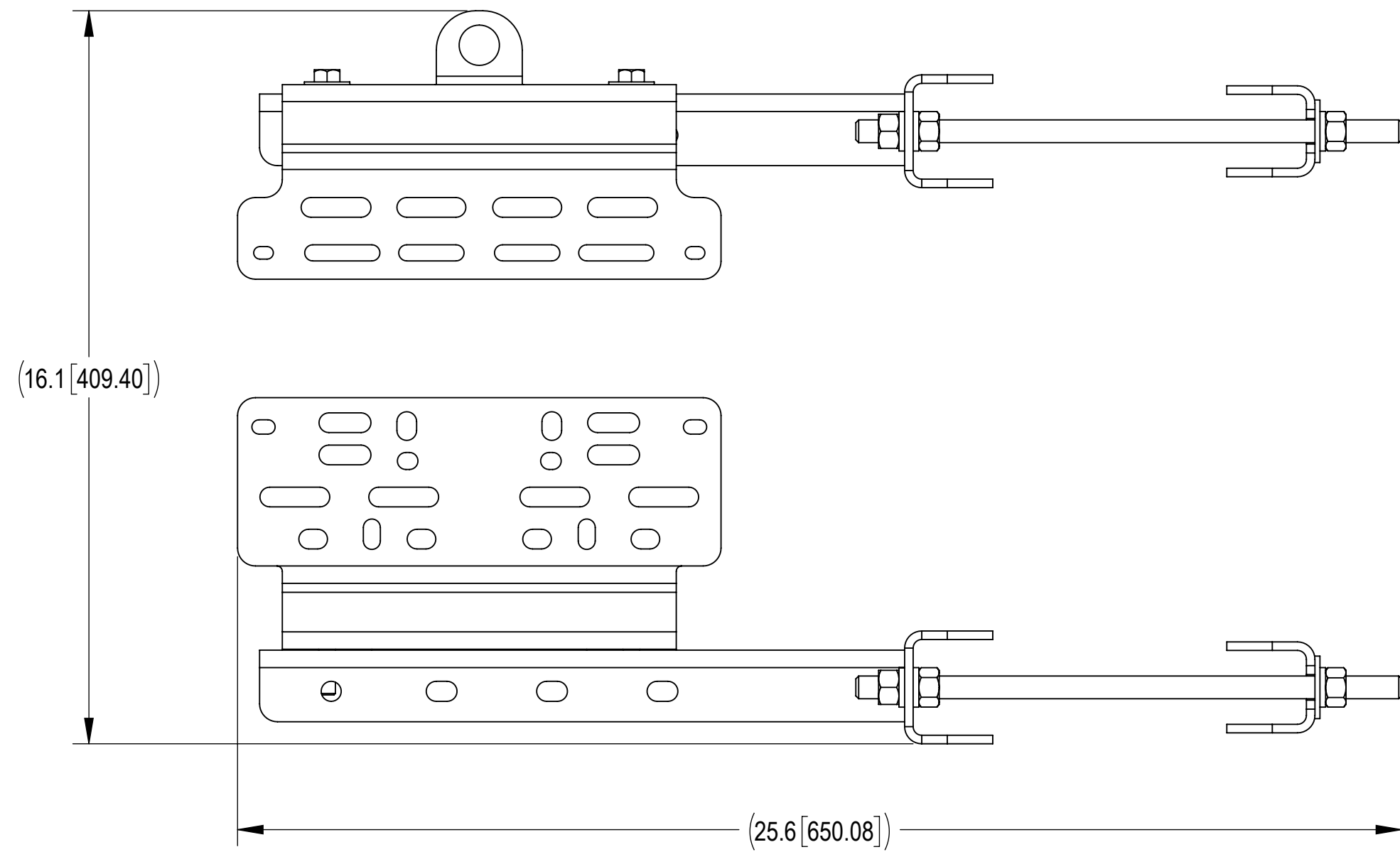
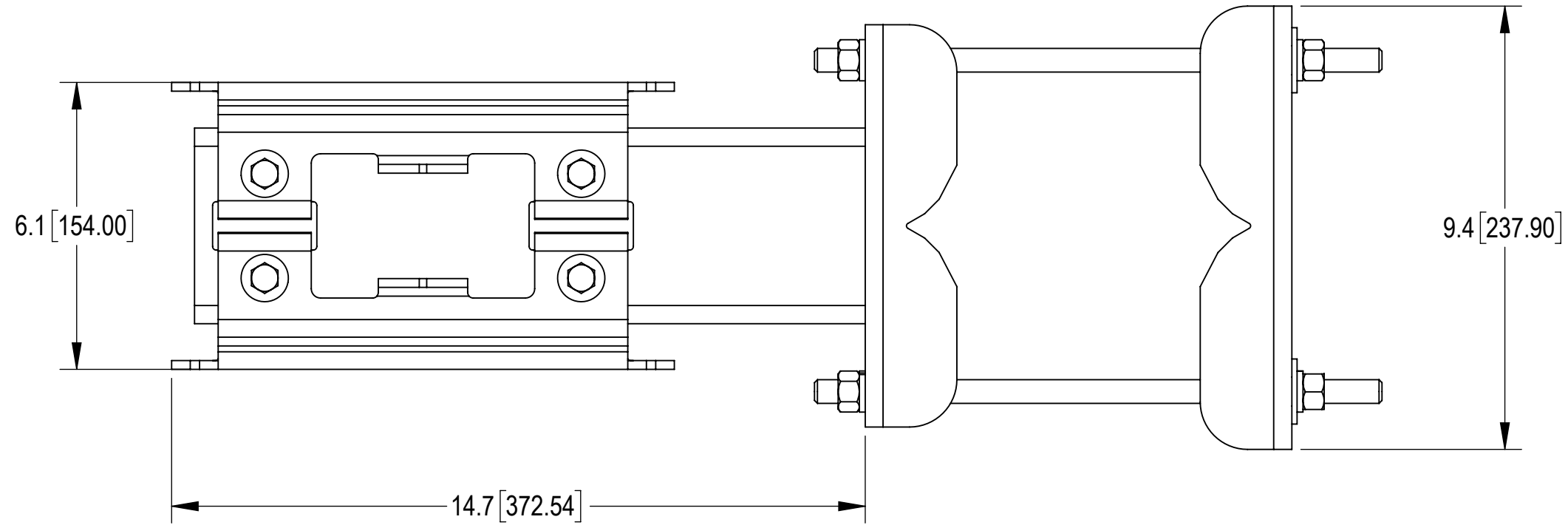
3

2

1

- 1.0 GENERAL NOTES
 - 1.1 ALL IMPERIAL DIMENSIONS ARE IN BRACKETS [X.XX]
 - 1.2 FEATURES CRITICAL TO QUALITY ARE INDICATED IN ROUNDED BOX (X.X)
 - 1.3 FOR PATENT INFO :<https://www.cs-pat.com>
- 2.0 DESIGN NOTES
 - 2.1 MOUNT WILL FIT LEGS UP TO:
 - ∅ 5.6" ROUND
 - 6.0° 60° ANGLE
 - 4.5° 90° ANGLE
- 3.0 MANUFACTURING/SPECIAL REQUIREMENTS
- 4.0 TEST
- 5.0 PACKAGING
 - 5.1 PACKAGING SHALL MEET COMMSCOPE REQUIREMENTS PER DOCUMENT IS-PL-3005.

REVISIONS			
REV.	DESCRIPTION	DATE	APPROVED
A	INITIAL RELEASE	YX1027 18NOV22	JW1064 40161189CMO
B	SHEET2: ADDED 16 1/2" GALV FLAT WASHERS	LS1146 18APR23	JW1064 40169698CMO
C	SHEET 3 & 4: ADDED TORQUE NOTE SHEET 5: ADDED VIEWS FOR RRUS INSTALLATION	JL1183 03AUG23	JW1064 40176705CMO



DENSITY		lbs/in ³
MASS	35.35	lbs
VOLUME	124.84	in ³
SURFACE AREA	1487.41	in ²
HEIGHT	9.4[237.90]	
LENGTH	25.6[650.08]	
WIDTH	404.8[15.94]	

COMMSCOPE, INC. OF NORTH CAROLINA

TOLERANCES		SAP MATERIAL MASTER	
0 PLACE .X[X] ± 0.25[6.3]	2 PLACE .XX[X] ± 0.06[1.5]	RR-FA4	
1 PLACE .X[X] ± 0.12[3.0]	ANGLES ± 2°	FINISH	
MATERIAL		DUAL RRU MOUNT	
UNLESS OTHERWISE SPECIFIED DIMENSIONS ARE IN INCHES INTERPRET PER ANSI Y 14.5M-1994		NAME	DATE
CE	YX1027	18NOV22	
RW	JL1183	08/06/2023	
AD	YMENG	08/06/2023	
RE	YMENG	08/07/2023	
ECN 40176705CMO		SCALE	DOCUMENT NO.
		1:5	RR-FA4
SIZE	Auth Group	INSL	MODEL
C			VERSION STATUS REVISION
			02 RE C
		DRAWING	
		VERSION STATUS REVISION	VERSION STATUS REVISION
		02 RE C	02 RE C
			SHEET
			1 OF 5

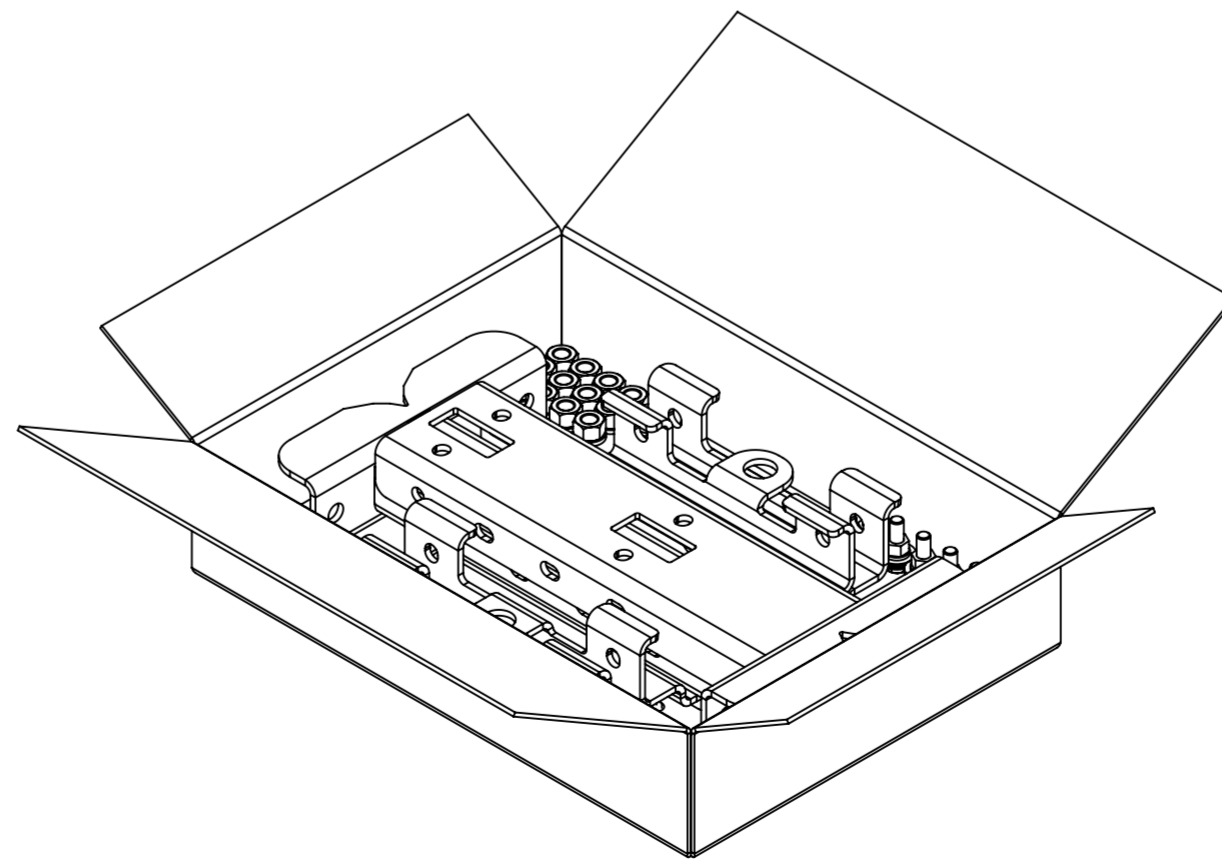
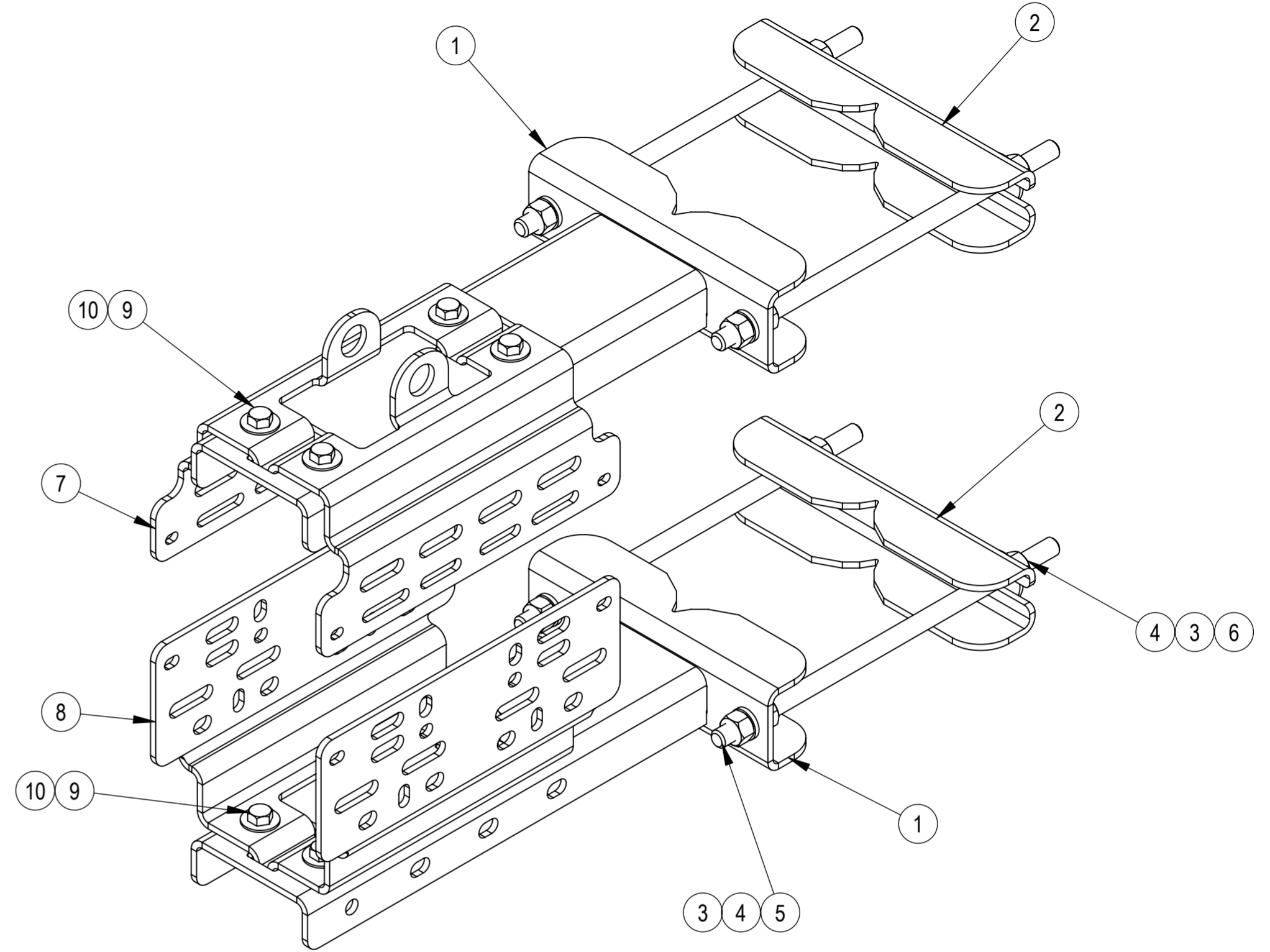
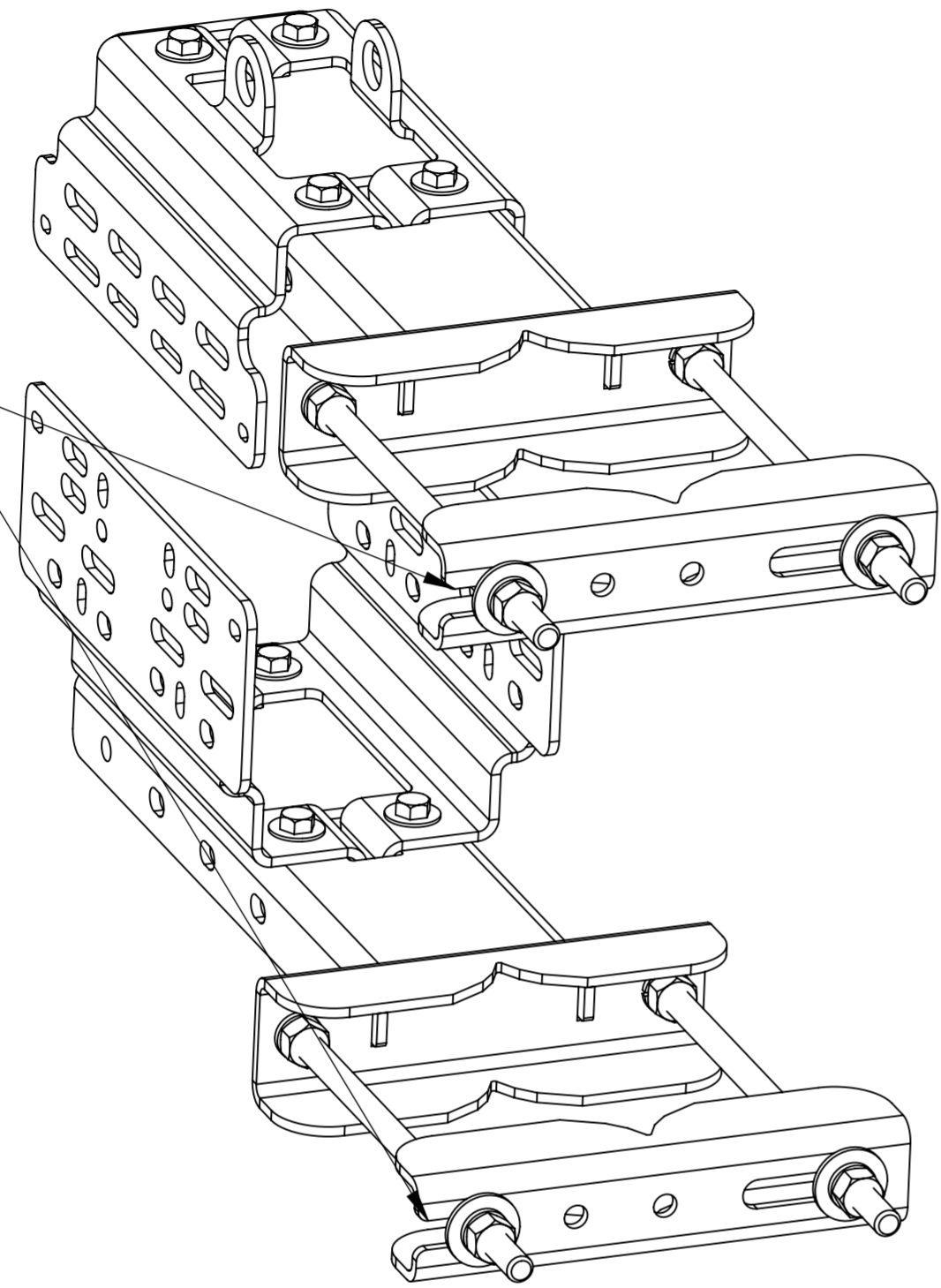
4

3

2

1

KEEP THE UPPER AND LOWER SLOTS ON THE SAME SIDE

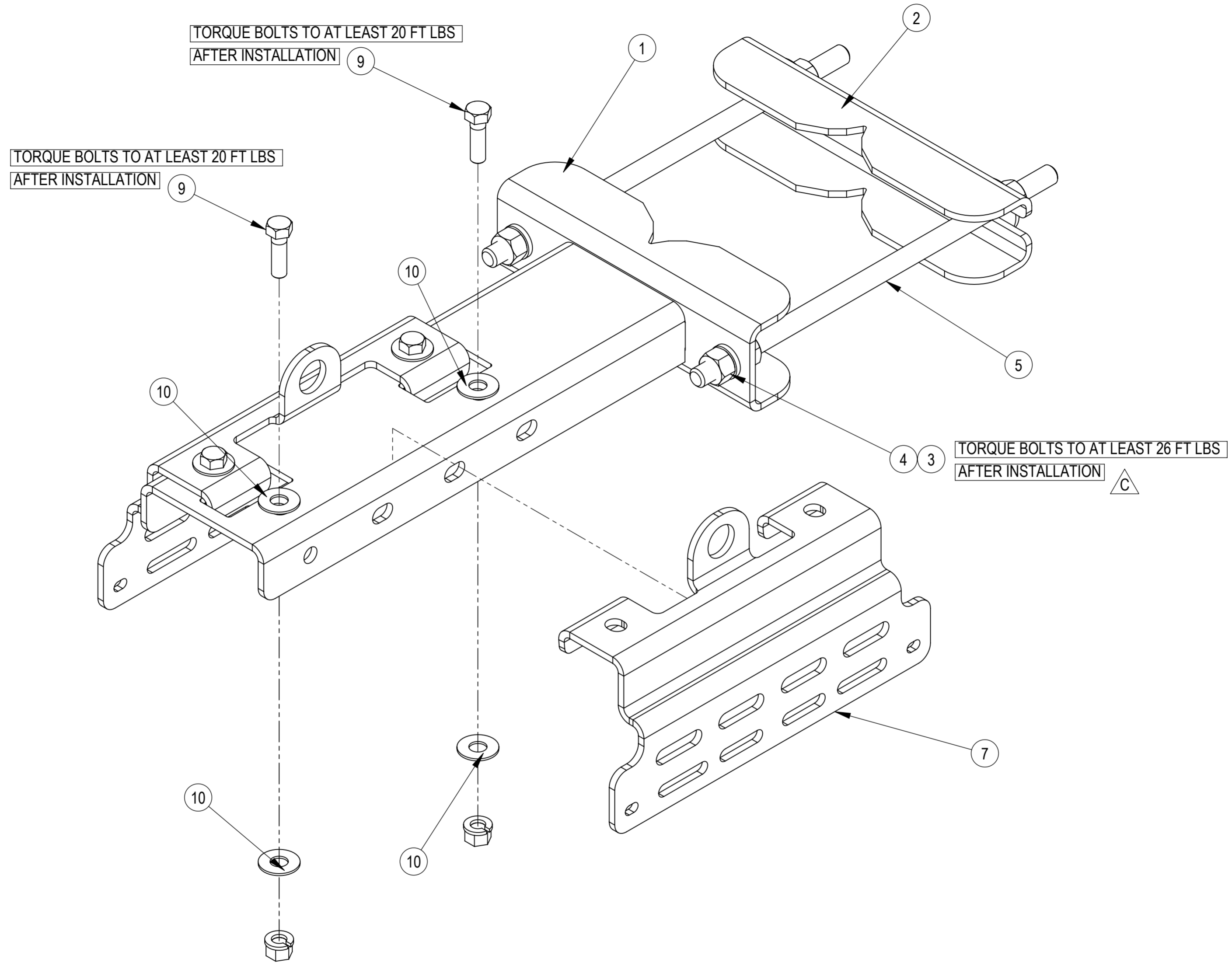


COMPONENT PART NUMBERS PROVIDED FOR ASSEMBLY PURPOSES;
INDIVIDUAL COMPONENTS MAY BE SHIPPED AS PARTS WITHIN AN INCLUDED KIT.

ITEM NO.	PART NUMBER	DESCRIPTION	QTY.	WEIGHT
1	RRFA-1000-00	FRONT CLAMP WELDED ASSEMBLY	2	7.07 LBS
2	RRFA-2000-00	REAR CLAMP	2	2.33 LBS
3	GWL-04	1/2" GALV LOCK WASHER	12	0.01 LBS
4	GN-04	1/2" GALV HEX NUT	12	0.04 LBS
5	MT-379	1/2" X 12" GALV THREADED ROD	4	0.66 LBS
6	GWV-04	1/2" GALV FLAT WASHER	4	0.04 LBS
7	RRFA-3000-00	RRU HANGER-TOP	2	2.80 LBS
8	RRFA-4000-00	RRU HANGER-BOTTOM	2	3.30 LBS
9	GB-03125	3/8" X 1-1/4" GALV BOLT KIT	8	0.06 LBS
10	GWV-03	3/8" GALV FLAT WASHER	16	0.01 LBS

COMMSCOPE, INC. OF NORTH CAROLINA				
TITLE DUAL RRU MOUNT				
SIZE A2	SCALE 1:10	DOCUMENT NO. RR-FA4		
DRAWING		SHEET		
VERSION 02	STATUS RE	REVISION C	2 OF 5	

1.0 PREASSEMBLE HANGER BRACKETS AND RRUs (ITEM 7)
 2.0 WITH ITEMS 9 & 10 LOOSE, SLIDE HANGER INTO
 POSITION THEN TIGHTEN BOLTS FOR INSTALLATION



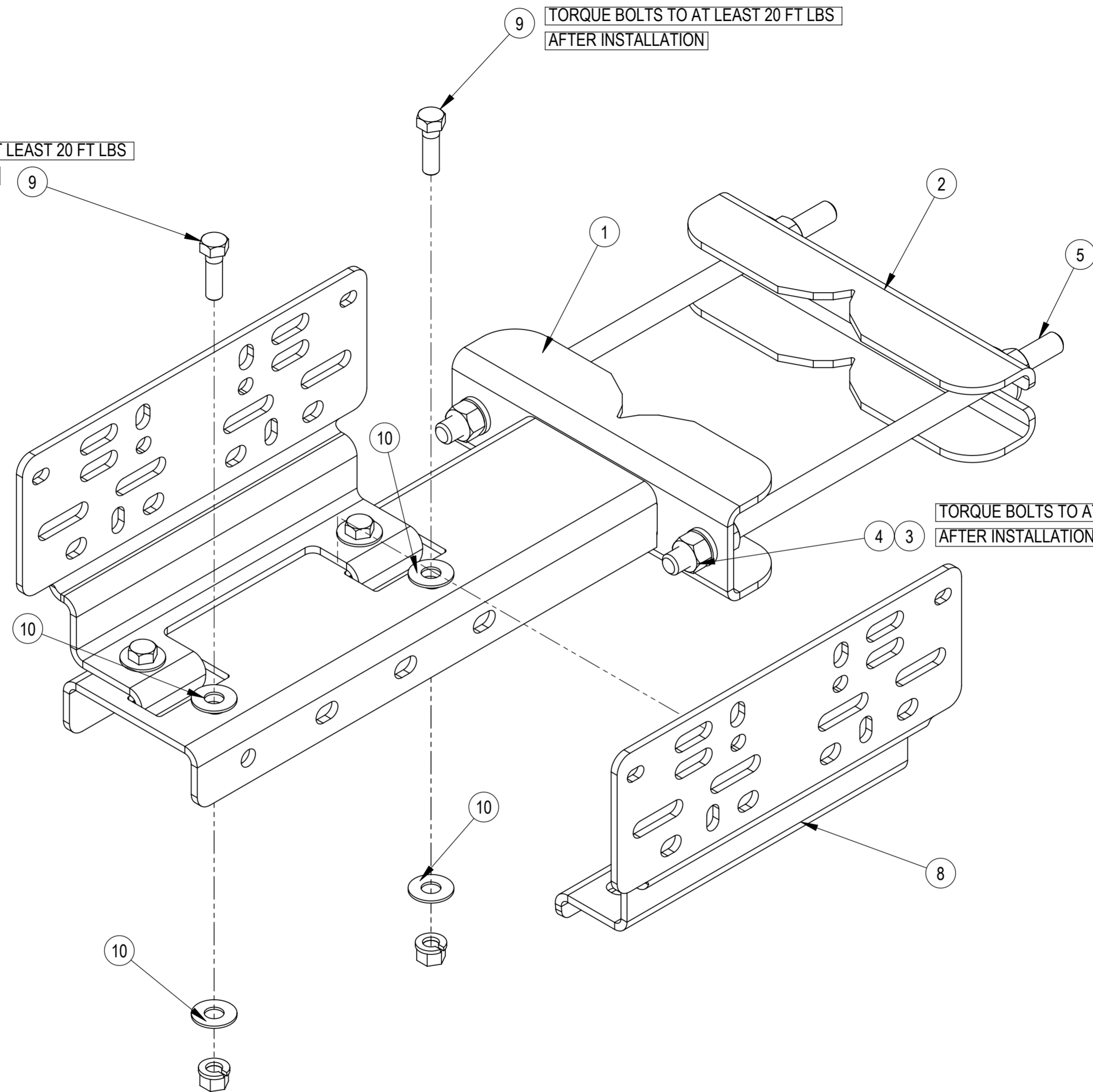
COMMSCOPE, INC. OF NORTH CAROLINA				
TITLE				
DUAL RRU MOUNT				
SIZE	SCALE	DOCUMENT NO.		
A2	1:5	RR-FA4		
DRAWING				SHEET
VERSION	STATUS	REVISION	3 OF 5	
02	RE	C		

1.0 PREASSEMBLE HANGER BRACKETS AND RRUs (ITEM 8)
 2.0 WITH ITEMS 9 & 10 LOOSE, SLIDE HANGER INTO
 POSITION THEN TIGHTEN BOLTS FOR INSTALLATION

TORQUE BOLTS TO AT LEAST 20 FT LBS
 AFTER INSTALLATION

TORQUE BOLTS TO AT LEAST 20 FT LBS
 AFTER INSTALLATION

TORQUE BOLTS TO AT LEAST 26 FT LBS
 AFTER INSTALLATION

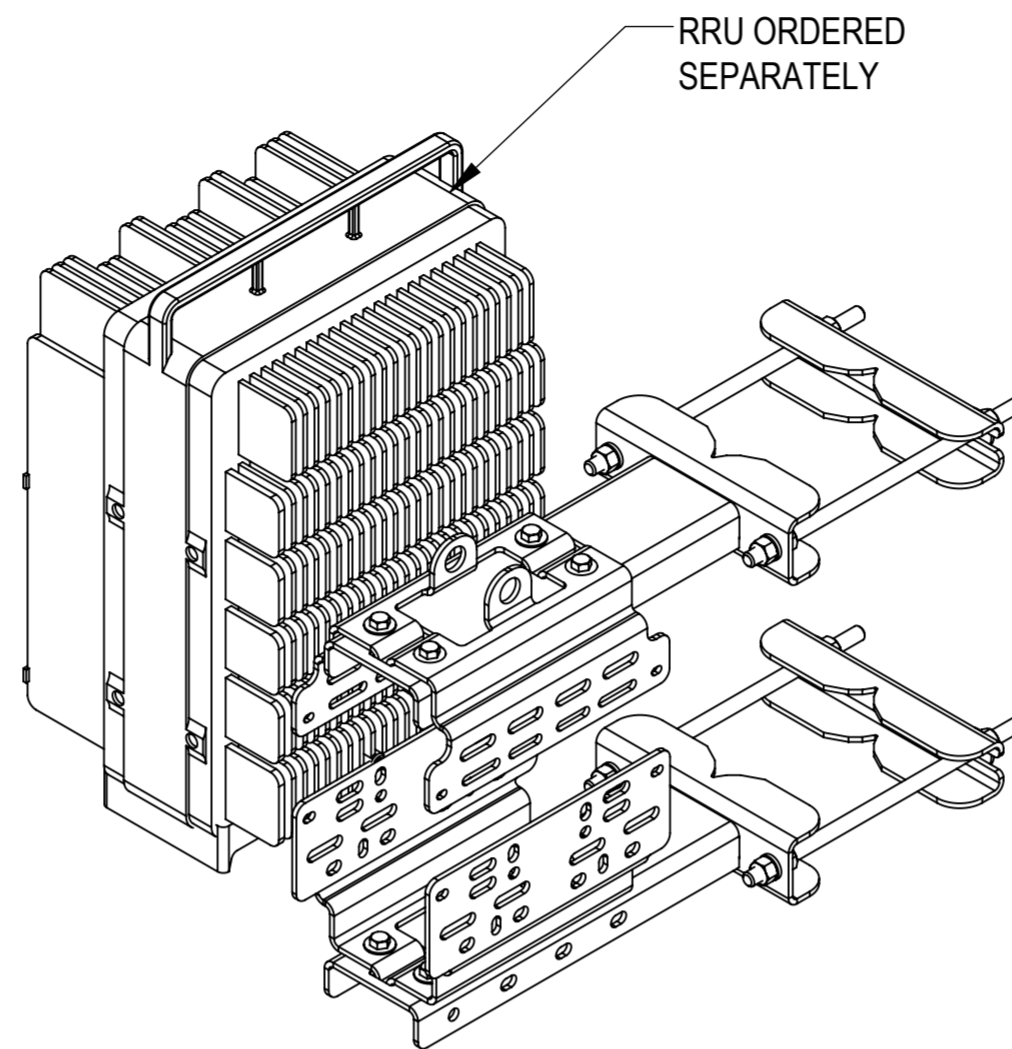
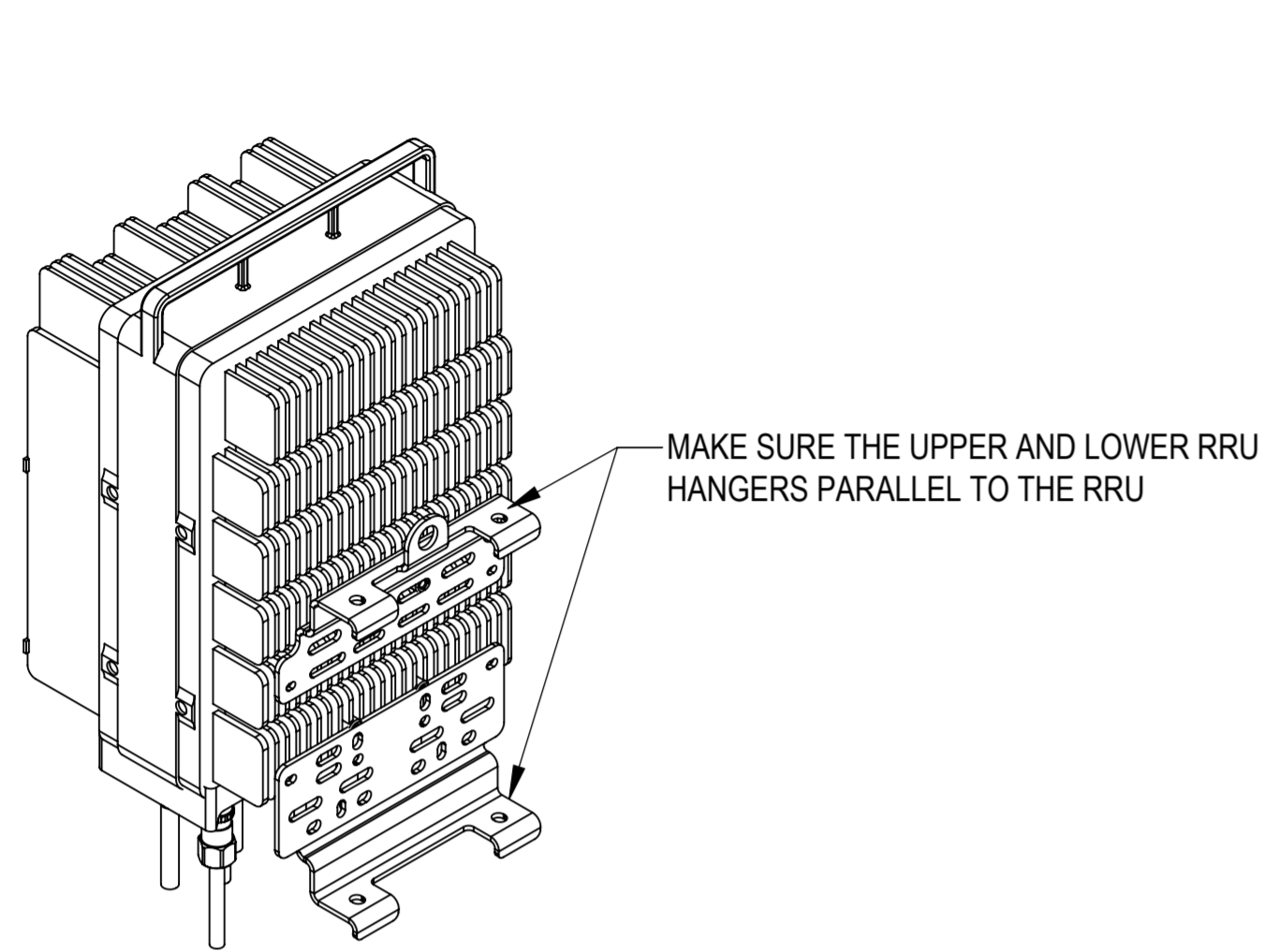


COMMSCOPE, INC. OF NORTH CAROLINA				
TITLE DUAL RRU MOUNT				
SIZE A2	SCALE 1:5	DOCUMENT NO. RR-FA4		
DRAWING				SHEET
VERSION 02	STATUS RE	REVISION C	4 OF 5	

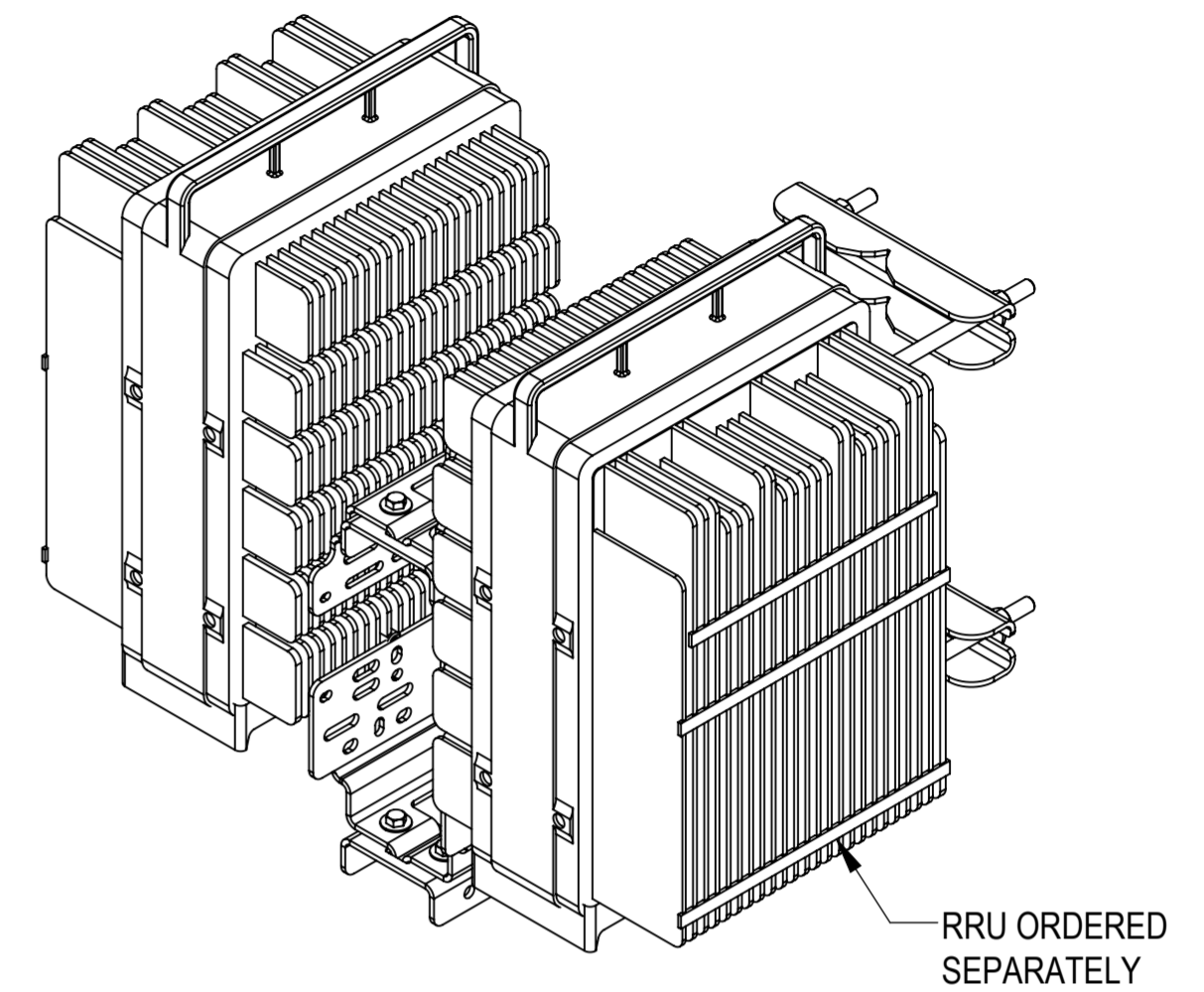
1.0 EXAMPLE INSTALLATION WITH RRU'S

1.1 ALL COMPONENTS, INCLUDING RRUs CAN BE FIRSTLY ASSEMBLED ON THE GROUND, THEN BE LIFTED TO TOWER.

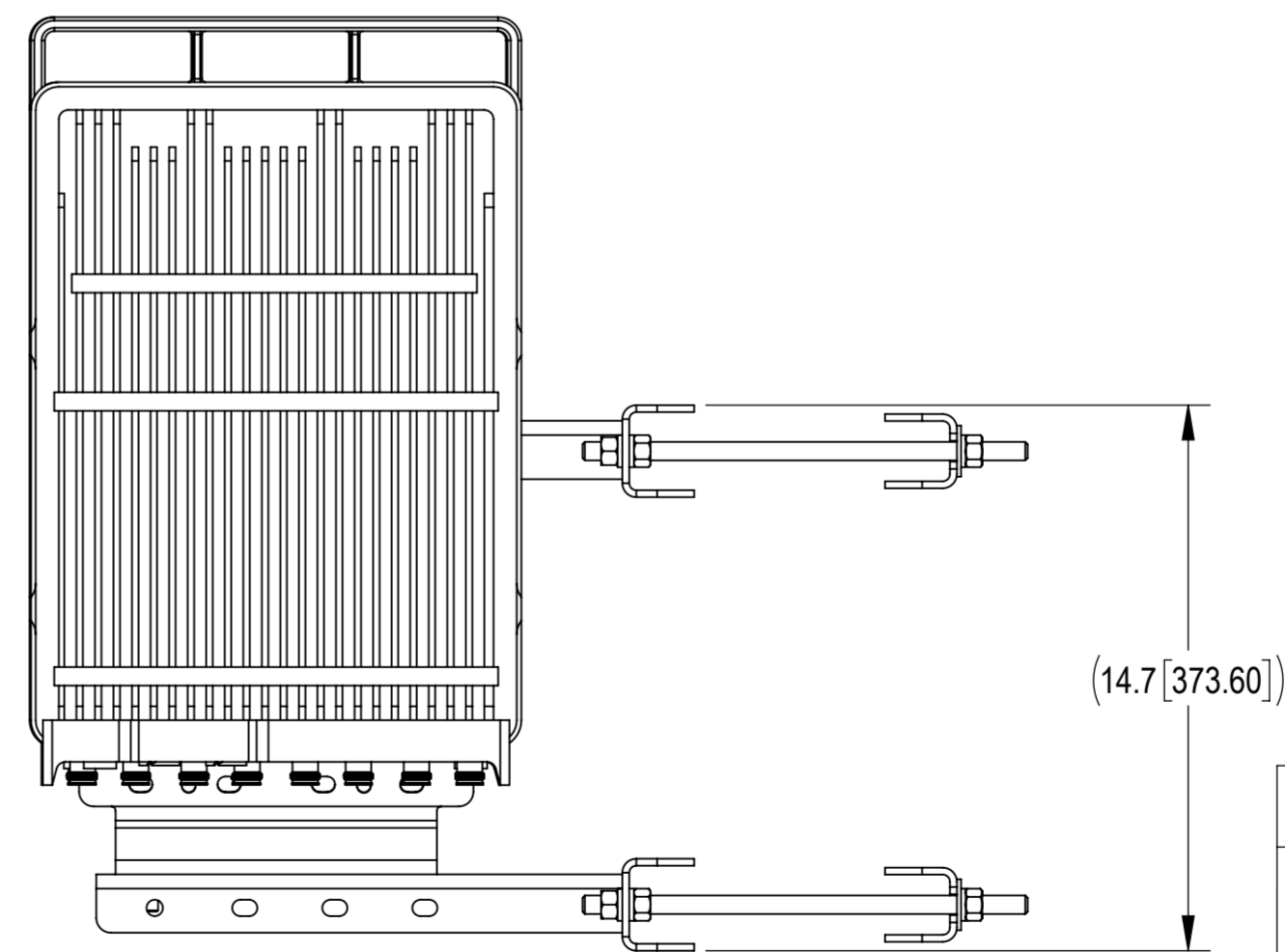
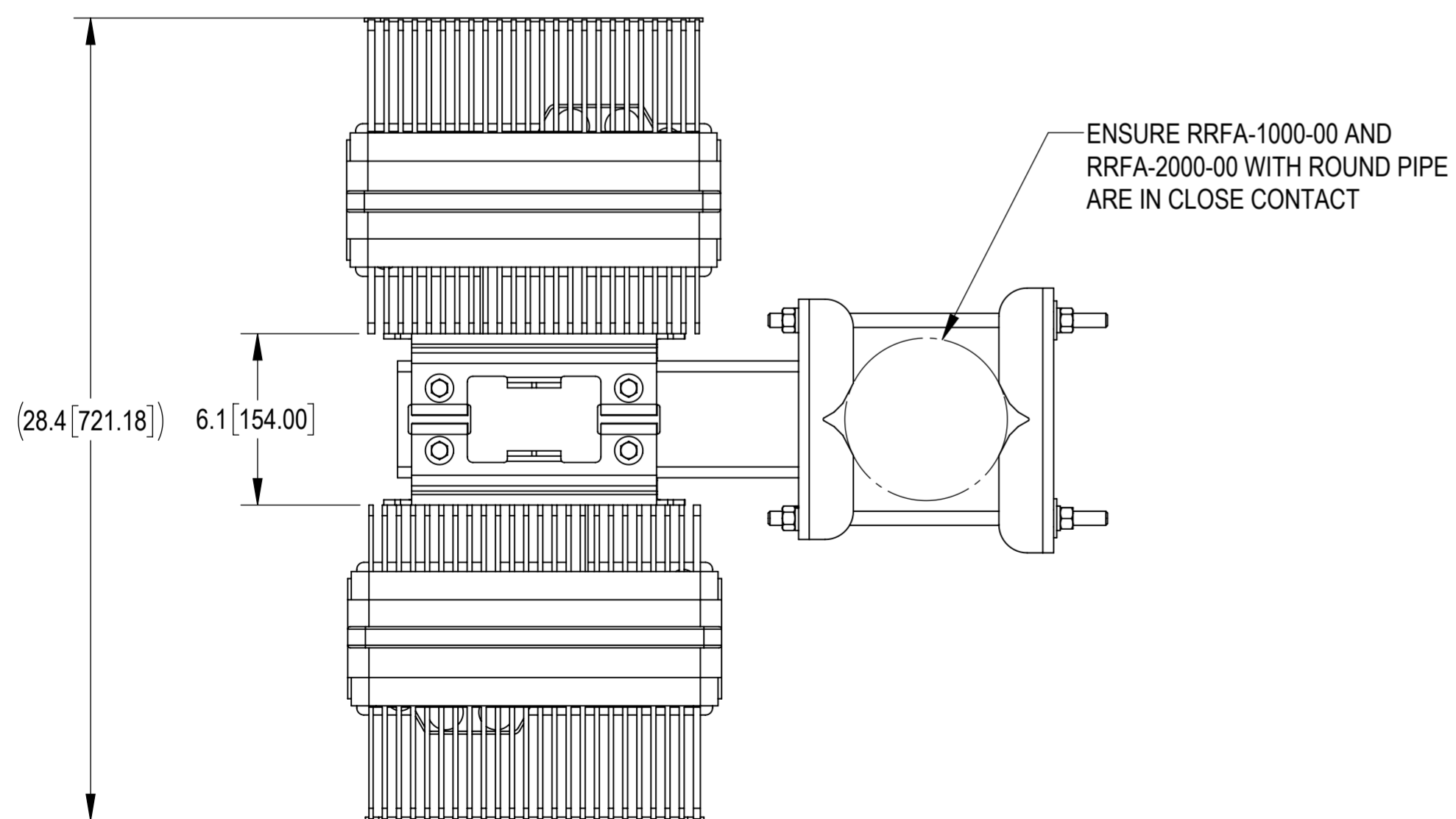
1.2 FIRSTLY CHECKING WHETHER THE RRFA-1000-00 AND RRFA-2000-00 ARE IN CLOSE CONTACT WITH THE ROUND PIPE OR ANGLE IRON. IF THERE IS A SMALL GAP, ADJUST IT BY LOOSENING THE RRU FIXING SCREWS TO ENSURE RRFA-1000-00 AND RRFA-2000-00 ARE IN CLOSE CONTACT WITH THE ROUND PIPE OR ANGLE IRON. FINALLY TIGHTEN ALL FASTENERS.



SINGLE RRU INSTALLATION



DUAL RRUs INSTALLATION



COMMSCOPE, INC. OF NORTH CAROLINA				
TITLE				
DUAL RRU MOUNT				
SIZE	SCALE	DOCUMENT NO.		
A2	1:10	RR-FA4		
DRAWING				SHEET
VERSION	STATUS	REVISION	5 OF 5	
02	RE	C		