

# 4V-15A-R4



8-port multibeam antenna, 8x 1710–2690 MHz, 4x 15-17° HPBW, 4x RET with tilt indicators

- Provides 4 beams, Supporting for high capacity at venues or special events
- Increases capacity density for maximum throughput
- All RETs have a tilt indicator rod

## General Specifications

<b>Antenna Type</b>	Multibeam
<b>Band</b>	Single band
<b>Color</b>	Light Gray (RAL 7035)
<b>Grounding Type</b>	RF connector inner conductor and body grounded to reflector and mounting bracket
<b>Performance Note</b>	Outdoor usage
<b>Radome Material</b>	Fiberglass, UV resistant
<b>Radiator Material</b>	Aluminum
<b>Reflector Material</b>	Aluminum
<b>RF Connector Interface</b>	4.3-10 Female
<b>RF Connector Location</b>	Bottom
<b>RF Connector Quantity, mid band</b>	8
<b>RF Connector Quantity, total</b>	8

## Remote Electrical Tilt (RET) Information

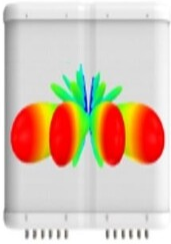
<b>RET Hardware</b>	CommRET v2
<b>RET Interface</b>	8-pin DIN Female   8-pin DIN Male
<b>RET Interface, quantity</b>	1 female   1 male
<b>Input Voltage</b>	10–30 Vdc
<b>Internal RET</b>	Mid band (4)
<b>Power Consumption, active state, maximum</b>	10 W
<b>Power Consumption, idle state, maximum</b>	2 W
<b>Protocol</b>	3GPP/AISG 2.0 (Single RET)

## Dimensions

# 4V-15A-R4

<b>Width</b>	640 mm   25.197 in
<b>Depth</b>	235 mm   9.252 in
<b>Length</b>	1224 mm   48.189 in
<b>Net Weight, antenna only</b>	38 kg   83.776 lb

## Array Layout



Array ID	Frequency (MHz)	RF Connector	RET (SRET)	AISG No.	AISG RET UID
Y1	1710-2690	1 - 2	1	AISG1	CPxxxxxxxxxxxxxxY1
Y2	1710-2690	3 - 4	2	AISG1	CPxxxxxxxxxxxxxxY2
Y3	1710-2690	5 - 6	3	AISG1	CPxxxxxxxxxxxxxxY3
Y4	1710-2690	7 - 8	4	AISG1	CPxxxxxxxxxxxxxxY4

(Sizes of colored boxes are not true depictions of array sizes)

## Port Configuration



## Electrical Specifications

**Impedance** 50 ohm

# 4V-15A-R4

<b>Operating Frequency Band</b>	1710 – 2690 MHz
<b>Polarization</b>	±45°
<b>Total Input Power, maximum</b>	960 W

## Electrical Specifications

Frequency Band, MHz	1710–1920	1920–2180	2300–2500	2500–2690
<b>Gain, dBi</b>	21.1	22	22.5	22.6
<b>Beam Centers, Horizontal, degrees</b>	±13 ±40	±13 ±40	±13 ±40	±13 ±40
<b>Beamwidth, Horizontal, degrees</b>	17	16	13	12
<b>Beamwidth, Vertical, degrees</b>	7.8	7	6	5.6
<b>Beam Tilt, degrees</b>	2–10	2–10	2–10	2–10
<b>USLS (First Lobe), dB</b>	16	16	17	17
<b>Front-to-Back Ratio at 180°, dB</b>	31	32	29	31
<b>Isolation, Cross Polarization, dB</b>	25	25	25	25
<b>Isolation, Beam to Beam, dB</b>	18	19	17	16
<b>VSWR   Return loss, dB</b>	1.5 14.0	1.5 14.0	1.5 14.0	1.5 14.0
<b>PIM, 3rd Order, 2 x 20 W, dBc</b>	-150	-150	-150	-150
<b>Input Power per Port, maximum, watts</b>	200	200	200	200

## Packaging and Weights

<b>Width, packed</b>	752 mm   29.606 in
<b>Depth, packed</b>	377 mm   14.843 in
<b>Length, packed</b>	1379 mm   54.291 in
<b>Weight, gross</b>	51 kg   112.436 lb

## Regulatory Compliance/Certifications

Agency	Classification
CHINA-ROHS	Below maximum concentration value
ISO 9001:2015	Designed, manufactured and/or distributed under this quality management system
REACH-SVHC	Compliant as per SVHC revision on <a href="http://www.commscope.com/ProductCompliance">www.commscope.com/ProductCompliance</a>
ROHS	Compliant
UK-ROHS	Compliant



# 4V-15A-R4

---

## Included Products

- BSAMNT-3 – Wide Profile Antenna Downtilt Mounting Kit for 2.4 - 4.5 in (60 - 115 mm) OD round members. Kit contains one scissor top bracket set and one bottom bracket set.

## \* Footnotes

**Performance Note** Severe environmental conditions may degrade optimum performance