

## HELIAX® Hanger Spacing Guidelines

### Hanger Spacing

Recommended maximum hanger spacings based on 150 ft. (46 m) tower height assumption are tabulated below for various wind speed and ice conditions. The recommendations are based on guidelines stated in EIA Standard RS-222, wind tunnel and vibration tests. They are current as of December 2018 and supersede previous recommendations.

These guidelines assume that all hangers are properly installed and tightened.

Standard Tower Configuration Spacing: 3 to 4 ft. (0.9 to 1.2 m)

For Typical Climates: Use the 125 mph (200 km/h), 1/2 in (13 mm) ice conditions

Severe or Mild Climates: Use the wind speed and ice conditions that most closely approximate the expected worst case conditions for the local climate



### 1: Snap-in Hangers

Nominal Cable Size	Hanger Part Number	Recommended Maximum Hanger Spacing, feet (meters)					
		85 mph (137 km/h)			100 mph (160 km/h)		
Radial Ice:		No Ice	1/2 in (13 mm)	1 in (25 mm)	No Ice	1/2 in (13 mm)	1 in (25 mm)
1/2 in	<a href="#">SSH-12</a>	4 (1.2)	3 (0.9)	2 (0.6)	4 (1.2)	3 (0.9)	2 (0.6)
7/8 in	<a href="#">SSH-78</a>	4 (1.2)	3 (0.9)	3 (0.9)	3 (0.9)	3 (0.9)	2 (0.6)
1-1/4 in	<a href="#">SSH-114</a>	3 (0.9)	3 (0.9)	3 (0.9)	3 (0.9)	3 (0.9)	2 (0.6)
1-5/8 in	<a href="#">SSH-158</a>	3 (0.9)	3 (0.9)	3 (0.9)	3 (0.9)	3 (0.9)	2 (0.6)
Wind Speed:		125 mph (200 km/h)			150 mph (240 km/h)		
Radial Ice:		No Ice	1/2 in (13 mm)	1 in (25 mm)	No Ice	1/2 in (13 mm)	1 in (25 mm)
1/2 in	<a href="#">SSH-12</a>	3 (0.9)	3 (0.9)	2 (0.6)	3 (0.9)	2 (0.6)	1 (0.3)
7/8 in	<a href="#">SSH-78</a>	3 (0.9)	3 (0.9)	2 (0.6)	2 (0.6)	1 (0.3)	1 (0.3)
1-1/4 in	<a href="#">SSH-114</a>	3 (0.9)	3 (0.9)	2 (0.6)	2 (0.6)	1 (0.3)	1 (0.3)
1-5/8 in	<a href="#">SSH-158</a>	3 (0.9)	3 (0.9)	2 (0.6)	2 (0.6)	1 (0.3)	1 (0.3)

Snap-in Hangers: Table 1

Definitions and Assumptions 1. Per EIA-222 Standard: Coefficient of drag for coaxial cable is 1.2 (cylindrical members). Ice forms completely around member (360 degrees). Combined wind and ice loading is reduced by 25% to reflect lower probability of wind and ice occurring simultaneously. 2. Wind speeds are maximum, which includes gust factors and exposure factors. 3. Hoisting grips are installed following manufacture guidelines and supporting the vertical load of the cable.



## 2: SnapStak® Plus Adjustable Hangers

Nominal Cable Size	Actual Cable Size	Hanger Part Number	Recommended Maximum Hanger Spacing, feet (meters)					
Wind Speed:			85 mph (137 km/h)			100 mph (160 km/h)		
Radial Ice:			No Ice	1/2 in (13 mm)	1 in (25 mm)	No Ice	1/2 in (13 mm)	1 in (25 mm)
1/2 in	14mm - 25mm	<a href="#">SSH-M</a>	4 (1.2)	3 (0.9)	2 (0.6)	4 (1.2)	3 (0.9)	2 (0.6)
1-5/8 in	36.1mm - 51mm	<a href="#">SSH-XL</a>	3 (0.9)	3 (0.9)	3 (0.9)	3 (0.9)	3 (0.9)	2 (0.6)
Wind Speed:			125 mph (200 km/h)			150 mph (240 km/h)		
Radial Ice:			No Ice	1/2 in (13 mm)	1 in (25 mm)	No Ice	1/2 in (13 mm)	1 in (25 mm)
1/2 in	14mm - 25mm	<a href="#">SSH-M</a>	3 (0.9)	3 (0.9)	2 (0.6)	3 (0.9)	2 (0.6)	1 (0.3)
1-5/8 in	36.1mm - 51mm	<a href="#">SSH-XL</a>	3 (0.9)	3 (0.9)	2 (0.6)	2 (0.6)	1 (0.3)	1 (0.3)

SnapStak Plus Adjustable Hangers: Table 2



## 3: PIM Isolator for Snap-in and SnapStak® Plus Adjustable Hangers

\* Spacing guidelines apply to isolator use with all stainless steel snap-in hangers from 1/2" nominal (SSH-12) to 51 mm (SSH-XL)

	Part Number	Recommended Maximum Hanger Spacing, feet (meters)					
Wind Speed:		85 mph (137 km/h)			100 mph (160 km/h)		
Radial Ice:		No Ice	1/2 in (13 mm)	1 in (25 mm)	No Ice	1/2 in (13 mm)	1 in (25 mm)
	<a href="#">SA-ISO</a>	3 (0.9)	3 (0.9)	2 (0.6)	3 (0.9)	3 (0.9)	2 (0.6)
Part Number		Recommended Maximum Hanger Spacing, feet (meters)					
Wind Speed:		125 mph (200 km/h)			150 mph (240 km/h)		
Radial Ice:		No Ice	1/2 in (13 mm)	1 in (25 mm)	No Ice	1/2 in (13 mm)	1 in (25 mm)
	<a href="#">SA-ISO</a>	3 (0.9)	3 (0.9)	2 (0.6)	2 (0.6)	2 (0.6)	1 (0.3)

PIM Isolator: Table 3

Definitions and Assumptions 1. Per EIA-222 Standard: Coefficient of drag for coaxial cable is 1.2 (cylindrical members). Ice forms completely around member (360 degrees). Combined wind and ice loading is reduced by 25% to reflect lower probability of wind and ice occurring simultaneously. 2. Wind speeds are maximum, which includes gust factors and exposure factors. 3. Hoisting grips are installed following manufacture guidelines and supporting the vertical load of the cable.

## 4: SnapTak PIM-Guard™ Adjustable Hangers



Nominal Cable Size	Actual Cable Size	Hanger Part Number	Recommended Maximum Hanger Spacing, feet (meters)					
Wind Speed:			85 mph (137 km/h)			100 mph (160 km/h)		
Radial Ice:			No Ice	1/2 in (13 mm)	1 in (25 mm)	No Ice	1/2 in (13 mm)	1 in (25 mm)
1/2 in	4.0mm - 11.0mm	<a href="#">SSH-411</a>	4 (1.2)	3 (0.9)	3 (0.9)	4 (1.2)	3 (0.9)	3 (0.9)
1/2 in	11.0mm - 17.0mm	<a href="#">SSH-1117</a>	4 (1.2)	3 (0.9)	3 (0.9)	4 (1.2)	3 (0.9)	3 (0.9)
1/2 in	26.0mm - 30.0mm	<a href="#">SSH-2630</a>	4 (1.2)	3 (0.9)	3 (0.9)	3 (0.9)	3 (0.9)	2 (0.6)
1/2 in	36.0mm - 42.0mm	<a href="#">SSH-3642</a>	3 (0.9)	3 (0.9)	3 (0.9)	3 (0.9)	3 (0.9)	2 (0.6)
Wind Speed:			125 mph (200 km/h)			150 mph (240 km/h)		
Radial Ice:			No Ice	1/2 in (13 mm)	1 in (25 mm)	No Ice	1/2 in (13 mm)	1 in (25 mm)
1/2 in	4.0mm - 11.0mm	<a href="#">SSH-411</a>	3 (0.9)	3 (0.9)	3 (0.9)	2 (0.6)	2 (0.6)	1 (0.3)
1/2 in	11.0mm - 17.0mm	<a href="#">SSH-1117</a>	3 (0.9)	3 (0.9)	3 (0.9)	2 (0.6)	2 (0.6)	1 (0.3)
1/2 in	26.0mm - 30.0mm	<a href="#">SSH-2630</a>	3 (0.9)	3 (0.9)	2 (0.6)	2 (0.6)	1 (0.3)	1 (0.3)
1/2 in	36.0mm - 42.0mm	<a href="#">SSH-3642</a>	3 (0.9)	3 (0.9)	2 (0.6)	2 (0.6)	1 (0.3)	1 (0.3)

SnapTak Adjustable Hangers: Table 4

## 5: SnapWrap Cable Management Strap



Part Number	Recommended Maximum Hanger Spacing, feet (meters)					
Wind Speed:	85 mph (137 km/h)			100 mph (160 km/h)		
Radial Ice:	No Ice	1/2 in (13 mm)	1 in (25 mm)	No Ice	1/2 in (13 mm)	1 in (25 mm)
	<a href="#">SWH-200-10</a>	3 (0.9)	3 (0.9)	2 (0.6)	3 (0.9)	3 (0.9)
Part Number	Recommended Maximum Hanger Spacing, feet (meters)					
Wind Speed:	125 mph (200 km/h)			150 mph (240 km/h)		
Radial Ice:	No Ice	1/2 in (13 mm)	1 in (25 mm)	No Ice	1/2 in (13 mm)	1 in (25 mm)
	<a href="#">SWH-200-10</a>	3 (0.9)	3 (0.9)	2 (0.6)	2 (0.6)	2 (0.6)

SnapWrap: Table 5

Definitions and Assumptions 1. Per EIA-222 Standard: Coefficient of drag for coaxial cable is 1.2 (cylindrical members). Ice forms completely around member (360 degrees). Combined wind and ice loading is reduced by 25% to reflect lower probability of wind and ice occurring simultaneously. 2. Wind speeds are maximum, which includes gust factors and exposure factors. 3. Hoisting grips are installed following manufacture guidelines and supporting the vertical load of the cable.



## 6: Mini Click-On and Mini Block Hangers

NR - Not Recommended

Nominal Cable Size	Hanger Part Number	Recommended Maximum Hanger Spacing, feet (meters)					
		85 mph (137 km/h)			100 mph (160 km/h)		
Radial Ice:		No Ice	1/2 in (13 mm)	1 in (25 mm)	No Ice	1/2 in (13 mm)	1 in (25 mm)
6 mm - 8 mm	<a href="#">68MCLICK, BHD-14</a> , 1-2 Stack	3 (0.9)	3 (0.9)	3 (0.9)	2 (0.6)	2 (0.6)	2 (0.6)
6 mm - 8 mm	<a href="#">68MCLICK, BHD-14</a> , 3 Stack	3 (0.9)	3 (0.9)	3 (0.9)	2 (0.6)	2 (0.6)	1.5 (0.61)
9 mm - 12 mm	<a href="#">912MCLICK, BHD-38</a> , 1-2 Stack	4 (1.2)	4 (1.2)	3 (0.9)	4 (1.2)	3 (0.9)	3 (0.9)
9 mm - 12 mm	<a href="#">912MCLICK, BHD-38</a> , 3 Stack	3 (0.9)	3 (0.9)	3 (0.9)	2 (0.6)	2 (0.6)	2 (0.6)
13 mm - 16 mm	<a href="#">1316MCLICK, BHD-12S</a> , 1 Stack	4 (1.2)	4 (1.2)	4 (1.2)	4 (1.2)	3 (0.9)	3 (0.9)
13 mm - 16 mm	<a href="#">1316MCLICK, BHD-12S</a> , 2 Stack	3 (0.9)	3 (0.9)	3 (0.9)	3 (0.9)	3 (0.9)	2 (0.6)
13 mm - 16 mm	<a href="#">1316MCLICK, BHD-12S</a> , 3 Stack	3 (0.9)	3 (0.9)	2 (0.6)	3 (0.9)	2 (0.6)	2 (0.6)
Wind Speed:		125 mph (200 km/h)			150 mph (240 km/h)		
Radial Ice:		No Ice	1/2 in (13 mm)	1 in (25 mm)	No Ice	1/2 in (13 mm)	1 in (25 mm)
6 mm - 8 mm	<a href="#">68MCLICK, BHD-14</a> , 1 Stack	1.5 (0.46)	1.5 (0.46)	1.5 (0.46)	1.5 (0.46)	1.5 (0.46)	1.5 (0.46)
6 mm - 8 mm	<a href="#">68MCLICK, BHD-14</a> , 2 Stack	1.5 (0.46)	1.5 (0.46)	1.5 (0.46)	1.5 (0.46)	1 (0.3)	NR
6 mm - 8 mm	<a href="#">68MCLICK, BHD-14</a> , 3 Stack	1.5 (0.46)	1.5 (0.46)	1.5 (0.46)	NR	NR	NR
9 mm - 12 mm	<a href="#">912MCLICK, BHD-38</a> , 1-2 Stack	3 (0.9)	3 (0.9)	3 (0.9)	2 (0.6)	2 (0.6)	2 (0.6)
9 mm - 12 mm	<a href="#">912MCLICK, BHD-38</a> , 3 Stack	2 (0.6)	2 (0.6)	2 (0.6)	2 (0.6)	1.5 (0.46)	1.5 (0.46)
13 mm - 16 mm	<a href="#">1316MCLICK, BHD-12S</a> , 1-2 Stack	3 (0.9)	3 (0.9)	3 (0.9)	2 (0.6)	2 (0.6)	2 (0.6)
13 mm - 16 mm	<a href="#">1316MCLICK, BHD-12S</a> , 3 Stack	2 (0.6)	2 (0.6)	2 (0.6)	2 (0.6)	1.5 (0.46)	1 (0.3)

Mini Click-On and Mini Block Hangers: Table 6

Definitions and Assumptions 1. Per EIA-222 Standard: Coefficient of drag for coaxial cable is 1.2 (cylindrical members). Ice forms completely around member (360 degrees). Combined wind and ice loading is reduced by 25% to reflect lower probability of wind and ice occurring simultaneously. 2. Wind speeds are maximum, which includes gust factors and exposure factors. 3. Hoisting grips are installed following manufacture guidelines and supporting the vertical load of the cable.

## 7: Click-On and Block Hangers



Nominal Cable Size	Hanger Part Number	Recommended Maximum Hanger Spacing, feet (meters)					
		85 mph (137 km/h)			100 mph (160 km/h)		
Wind Speed:		85 mph (137 km/h)			100 mph (160 km/h)		
Radial Ice:		No Ice	1/2 in (13 mm)	1 in (25 mm)	No Ice	1/2 in (13 mm)	1 in (25 mm)
1/2 in	<a href="#">L4CLICK</a> , <a href="#">BHD-12</a> , 1-4 Stack	3 (0.9)	3 (0.9)	3 (0.9)	3 (0.9)	3 (0.9)	3 (0.9)
7/8 in	<a href="#">L5CLICKB</a> , <a href="#">BHD-78</a> , 1-4 Stack	4 (1.2)	4 (1.2)	4 (1.2)	3 (0.9)	3 (0.9)	3 (0.9)
1-1/4 in	<a href="#">L6CLICK</a> , <a href="#">BHD-114</a> , 1-2 Stack	4 (1.2)	4 (1.2)	4 (1.2)	3 (0.9)	3 (0.9)	3 (0.9)
1-1/4 in	<a href="#">L6CLICK</a> , <a href="#">BHD-114</a> , 3-4 Stack	3 (0.9)	3 (0.9)	3 (0.9)	3 (0.9)	3 (0.9)	3 (0.9)
1-5/8 in	<a href="#">L7CLICK</a> , <a href="#">BHD-158</a> , 1 Stack	4 (1.2)	4 (1.2)	4 (1.2)	3 (0.9)	3 (0.9)	3 (0.9)
1-5/8 in	<a href="#">L7CLICK</a> , <a href="#">BHD-158</a> , 2-4 Stack	3 (0.9)	3 (0.9)	3 (0.9)	3 (0.9)	3 (0.9)	3 (0.9)
Wind Speed:		125 mph (200 km/h)			150 mph (240 km/h)		
Radial Ice:		No Ice	1/2 in (13 mm)	1 in (25 mm)	No Ice	1/2 in (13 mm)	1 in (25 mm)
1/2 in	<a href="#">L4CLICK</a> , <a href="#">BHD-12</a> , 1-4 Stack	3 (0.9)	3 (0.9)	3 (0.9)	2 (0.6)	2 (0.6)	2 (0.6)
7/8 in	<a href="#">L5CLICKB</a> , <a href="#">BHD-78</a> , 1-2 Stack	3 (0.9)	3 (0.9)	3 (0.9)	2 (0.6)	2 (0.6)	2 (0.6)
7/8 in	<a href="#">L5CLICKB</a> , <a href="#">BHD-78</a> , 3-4 Stack	2 (0.6)	2 (0.6)	2 (0.6)	2 (0.6)	2 (0.6)	2 (0.6)
1-1/4 in	<a href="#">L6CLICK</a> , <a href="#">BHD-114</a> , 1-2 Stack	3 (0.9)	3 (0.9)	3 (0.9)	2 (0.6)	2 (0.6)	2 (0.6)
1-1/4 in	<a href="#">L6CLICK</a> , <a href="#">BHD-114</a> , 3-4 Stack	2 (0.6)	2 (0.6)	2 (0.6)	2 (0.6)	2 (0.6)	2 (0.6)
1-5/8 in	<a href="#">L7CLICK</a> , <a href="#">BHD-158</a> , 1 Stack	3 (0.9)	3 (0.9)	3 (0.9)	2 (0.6)	2 (0.6)	2 (0.6)
1-5/8 in	<a href="#">L7CLICK</a> , <a href="#">BHD-158</a> , 2-4 Stack	2 (0.6)	2 (0.6)	2 (0.6)	2 (0.6)	2 (0.6)	2 (0.6)

Click-On and Block Hangers: Table 7

\* These hanger spacings have been specified based on using the Click-On and Block Hangers with CommScope specified hardware kits. Definitions and Assumptions 1. Per EIA-222 Standard: Coefficient of drag for coaxial cable is 1.2 (cylindrical members). Ice forms completely around member (360 degrees). Combined wind and ice loading is reduced by 25% to reflect lower probability of wind and ice occurring simultaneously. 2. Wind speeds are maximum, which includes gust factors and exposure factors. 3. Hoisting grips are installed following manufacture guidelines and supporting the vertical load of the cable.



## 8: Standard Hangers

Nominal Cable Size	Hanger Part Number	Recommended Maximum Hanger Spacing, feet (meters)					
		85 mph (137 km/h)			100 mph (160 km/h)		
Radial Ice:		No Ice	1/2 in (13 mm)	1 in (25 mm)	No Ice	1/2 in (13 mm)	1 in (25 mm)
1/2 in	<a href="#">43211A</a>	4 (1.2)	3 (0.9)	2 (0.6)	4 (1.2)	3 (0.9)	2 (0.6)
5/8 in	<a href="#">42396A-9</a>	5 (1.5)	5 (1.5)	4 (1.2)	5 (1.5)	5 (1.5)	4 (1.2)
7/8 in	<a href="#">42396A-5</a>	5 (1.5)	5 (1.5)	4 (1.2)	5 (1.5)	5 (1.5)	4 (1.2)
1-1/4 in	<a href="#">42396A-1</a>	4 (1.2)	4 (1.2)	4 (1.2)	4 (1.2)	4 (1.2)	3 (0.9)
1-5/8 in	<a href="#">42396A-2</a>	4 (1.2)	4 (1.2)	4 (1.2)	4 (1.2)	3 (0.9)	3 (0.9)
3 in	<a href="#">31766A-11</a>	5 (1.5)	5 (1.5)	5 (1.5)	5 (1.5)	5 (1.5)	5 (1.5)
4 in	<a href="#">31766A-10</a>	5 (1.5)	5 (1.5)	5 (1.5)	5 (1.5)	5 (1.5)	5 (1.5)
5 in	<a href="#">33598-5</a>	5 (1.5)	5 (1.5)	5 (1.5)	5 (1.5)	5 (1.5)	5 (1.5)
Wind Speed:		125 mph (200 km/h)			150 mph (240 km/h)		
Radial Ice:		No Ice	1/2 in (13 mm)	1 in (25 mm)	No Ice	1/2 in (13 mm)	1 in (25 mm)
1/2 in	<a href="#">43211A</a>	4 (1.2)	3 (0.9)	2 (0.6)	3 (0.9)	2 (0.6)	1 (0.3)
5/8 in	<a href="#">42396A-9</a>	5 (1.5)	4 (1.2)	3 (0.9)	4 (1.2)	3 (0.9)	3 (0.9)
7/8 in	<a href="#">42396A-5</a>	5 (1.5)	4 (1.2)	3 (0.9)	4 (1.2)	3 (0.9)	2 (0.6)
1-1/4 in	<a href="#">42396A-1</a>	4 (1.2)	4 (1.2)	3 (0.9)	3 (0.9)	3 (0.9)	3 (0.9)
1-5/8 in	<a href="#">42396A-2</a>	3 (0.9)	3 (0.9)	3 (0.9)	3 (0.9)	3 (0.9)	2 (0.6)
3 in	<a href="#">31766A-11</a>	5 (1.5)	5 (1.5)	5 (1.5)	5 (1.5)	5 (1.5)	5 (1.5)
4 in	<a href="#">31766A-10</a>	5 (1.5)	5 (1.5)	5 (1.5)	5 (1.5)	5 (1.5)	5 (1.5)
5 in	<a href="#">33598-5</a>	5 (1.5)	5 (1.5)	5 (1.5)	5 (1.5)	5 (1.5)	5 (1.5)

Standard Hangers: Table 8

Definitions and Assumptions 1. Per EIA-222 Standard: Coefficient of drag for coaxial cable is 1.2 (cylindrical members). Ice forms completely around member (360 degrees). Combined wind and ice loading is reduced by 25% to reflect lower probability of wind and ice occurring simultaneously. 2. Wind speeds are maximum, which includes gust factors and exposure factors. 3. Hoisting grips are installed following manufacture guidelines and supporting the vertical load of the cable.

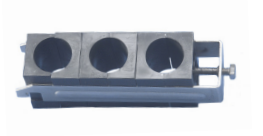
## 9: Standard Hangers for Elliptical Waveguide



Nominal Cable Size	Hanger Part Number	Recommended Maximum Hanger Spacing, feet (meters)					
		85 mph (137 km/h)			100 mph (160 km/h)		
Wind Speed:		85 mph (137 km/h)			100 mph (160 km/h)		
Radial Ice:		No Ice	1/2 in (13 mm)	1 in (25 mm)	No Ice	1/2 in (13 mm)	1 in (25 mm)
EW20	<a href="#">31766A-10</a>	6 (1.8)	6 (1.8)	6 (1.8)	6 (1.8)	6 (1.8)	6 (1.8)
EW28	<a href="#">31766A-11</a>	6 (1.8)	6 (1.8)	6 (1.8)	6 (1.8)	6 (1.8)	5.5 (1.68)
EW34, EWP34	<a href="#">42396A-15</a>	6 (1.8)	6 (1.8)	6 (1.8)	6 (1.8)	5.5 (1.68)	6 (1.8)
EW43, EWP43	<a href="#">42396A-16</a>	6 (1.8)	6 (1.8)	5.5 (1.68)	5 (1.5)	5 (1.5)	4.5 (1.37)
EW52, EWP52	<a href="#">42396A-8</a>	5.5 (1.68)	5 (1.5)	4.5 (1.37)	4.5 (1.37)	4.5 (1.37)	4 (1.2)
EW63, EWP63	<a href="#">42396A-7</a>	5 (1.5)	4.5 (1.37)	4 (1.2)	4 (1.2)	4 (1.2)	3.5 (1.07)
EW64, EWP64	<a href="#">42396A-1</a>	5 (1.5)	6 (1.8)	4 (1.2)	4.5 (1.37)	4 (1.2)	3.5 (1.07)
EW77, EWP77	<a href="#">42396A-11</a>	5 (1.5)	6 (1.8)	4 (1.2)	4.5 (1.37)	4 (1.2)	3.5 (1.07)
EW85	<a href="#">42396A-5</a>	5.5 (1.68)	6 (1.8)	4 (1.2)	4.5 (1.37)	4 (1.2)	3.5 (1.07)
EW90, EWP90	<a href="#">42396A-5</a>	5.5 (1.68)	6 (1.8)	4 (1.2)	4.5 (1.37)	4 (1.2)	3.5 (1.07)
EW127A, EWP127A	<a href="#">42396A-9</a>	5.5 (1.68)	4.5 (1.37)	3.5 (1.07)	4.5 (1.37)	4 (1.2)	3 (0.9)
EW132, EWP132	<a href="#">42396A-9</a>	5.5 (1.68)	4.5 (1.37)	3.5 (1.07)	4.5 (1.37)	4 (1.2)	3 (0.9)
EW180, EWP180	<a href="#">43211A</a>	6 (1.8)	4.5 (1.37)	3.5 (1.07)	5 (1.5)	4 (1.2)	3 (0.9)
EW220, EW240	<a href="#">43211A</a>	6 (1.8)	4.5 (1.37)	3.5 (1.07)	5 (1.5)	4 (1.2)	3 (0.9)
Wind Speed:		125 mph (200 km/h)			150 mph (240 km/h)		
Radial Ice:		No Ice	1/2 in (13 mm)	1 in (25 mm)	No Ice	1/2 in (13 mm)	1 in (25 mm)
EW20	<a href="#">31766A-10</a>	5.5 (1.68)	5.5 (1.68)	5 (1.5)	4.5 (1.37)	4.5 (1.37)	4 (1.2)
EW28	<a href="#">31766A-11</a>	5 (1.5)	5 (1.5)	4.5 (1.37)	4 (1.2)	4 (1.2)	3.5 (1.07)
EW34, EWP34	<a href="#">42396A-15</a>	4.5 (1.37)	4.5 (1.37)	4 (1.2)	4 (1.2)	3.5 (1.07)	4 (1.2)
EW43, EWP43	<a href="#">42396A-16</a>	4 (1.2)	4 (1.2)	3.5 (1.07)	3.5 (1.07)	3.5 (1.07)	3 (0.9)
EW52, EWP52	<a href="#">42396A-8</a>	3.5 (1.07)	3.5 (1.07)	3 (0.9)	3 (0.9)	3 (0.9)	2.5 (0.76)
EW63, EWP63	<a href="#">42396A-7</a>	3.5 (1.07)	3 (0.9)	2.5 (0.76)	2.5 (0.76)	2.5 (0.76)	2 (0.6)
EW64, EWP64	<a href="#">42396A-1</a>	3.5 (1.07)	3 (0.9)	2.5 (0.76)	3 (0.9)	2.5 (0.76)	2 (0.6)
EW77, EWP77	<a href="#">42396A-11</a>	3.5 (1.07)	3 (0.9)	2.5 (0.76)	3 (0.9)	2.5 (0.76)	2 (0.6)
EW85	<a href="#">42396A-5</a>	3.5 (1.07)	3 (0.9)	2.5 (0.76)	3 (0.9)	2.5 (0.76)	2 (0.6)
EW90, EWP90	<a href="#">42396A-5</a>	3.5 (1.07)	3 (0.9)	2.5 (0.76)	3 (0.9)	2.5 (0.76)	2 (0.6)
EW127A, EWP127A	<a href="#">42396A-9</a>	3.5 (1.07)	3 (0.9)	2.5 (0.76)	3 (0.9)	2.5 (0.76)	2 (0.6)
EW132, EWP132	<a href="#">42396A-9</a>	4 (1.2)	3 (0.9)	2.5 (0.76)	3 (0.9)	2.5 (0.76)	2 (0.6)
EW180, EWP180	<a href="#">43211A</a>	4 (1.2)	3 (0.9)	2.5 (0.76)	3.5 (1.07)	2.5 (0.76)	2 (0.6)
EW220, EW240	<a href="#">43211A</a>	4 (1.2)	3 (0.9)	2.5 (0.76)	3.5 (1.07)	2.5 (0.76)	2 (0.6)

Standard Hanger for Elliptical Waveguide: Table 9

Definitions and Assumptions 1. Per EIA-222 Standard: Coefficient of drag for coaxial cable is 1.2 (cylindrical members). Ice forms completely around member (360 degrees). Combined wind and ice loading is reduced by 25% to reflect lower probability of wind and ice occurring simultaneously. 2. Wind speeds are maximum, which includes gust factors and exposure factors. 3. Hoisting grips are installed following manufacture guidelines and supporting the vertical load of the cable.



## 10: KwikClamp™ Hangers (only available in Europe, the Middle East, and Africa)

Nominal Cable Size	Hanger Part Number	Recommended Maximum Hanger Spacing, feet (meters)
Wind Speed:		85 mph (137 km/h)
Radial Ice:		No Ice
1/4 in	<a href="#">F1-CLAMP</a> , 1-4 Stack	6 (1.83)
1/2 in	<a href="#">F4-CLAMP</a> , 1-4 Stack	6 (1.83)
4.5-9 mm	<a href="#">F-CLAMP-A</a> , 1-4 Stack	6 (1.83)
4.5-9 mm	<a href="#">F-CLAMP-A2</a> , 1-3 Stack	6 (1.83)
7-9 mm / 22-34 mm	<a href="#">F-CLAMP-A2A2CC-4B</a> , 4 Stack	6 (1.83)
7-9 mm / 22-34 mm	<a href="#">F-CLAMP-A2CC-4B</a> , 4 Stack	6 (1.83)
7-22 mm	<a href="#">F-CLAMP-B</a> , 1-3 Stack	6 (1.83)
7-22 mm	<a href="#">F-CLAMP-B2</a> , 2-3 Stack	6 (1.83)
22-34 mm	<a href="#">F-CLAMP-C</a> , 1-3 Stack	6 (1.83)
34-46 mm	<a href="#">F-CLAMP-D</a> , 1-3 Stack	6 (1.83)
9-12 mm	<a href="#">F-CLAMP-E</a> , 1-4 Stack	6 (1.83)
9-12 mm	<a href="#">F-CLAMP-E2</a> , 1-3 Stack	6 (1.83)
1/2 in	<a href="#">L4-CLAMP</a> , 1-4 Stack	6 (1.83)
7/8 in	<a href="#">L5-CLAMP</a> , 1-4 Stack	6 (1.83)
1 1/4 in	<a href="#">L6-CLAMP</a> , 1-4 Stack	6 (1.83)
1 5/8 in	<a href="#">L7-CLAMP</a> , 1-3 Stack	6 (1.83)
3/8 in	<a href="#">R8-CLAMP</a> , 1-4 Stack	6 (1.83)

Clamp Hanger Blocks: Table 7

### Trademarks

All trademarks identified by ® or ™ are registered trademarks or trademarks, respectively, of CommScope, Inc. This document is for planning purposes only and is not intended to modify or supplement any specifications or warranties relating to CommScope products or services. CommScope is committed to the highest standards of business integrity and environmental sustainability, with a number of CommScope’s facilities across the globe certified in accordance with international standards, including ISO 9001, TL 9000, and ISO 14001.

Further information regarding CommScope’s commitment can be found at [www.commscope.com/About-Us/Corporate-Responsibility-and-Sustainability](http://www.commscope.com/About-Us/Corporate-Responsibility-and-Sustainability).

These products are covered by one or more U.S. patents or their foreign equivalents. For patents, see [www.commscope.com/ProductPatent/ProductPatent.aspx](http://www.commscope.com/ProductPatent/ProductPatent.aspx)

#### CommScope

3642 E US Highway 70, Claremont, NC 28610 USA  
 (828) 324-2200 (800) 982-1708  
[www.commscope.com](http://www.commscope.com)

#### Technical Support

+1 888 297 6433, Option 3 (Toll Free US and Canada)  
 +1 828 323 4220, Option 3 (local)  
<https://www.commscope.com/wisupport> (open a ticket)

Notice: CommScope disclaims any liability or responsibility for the results of improper or unsafe installation, inspection, maintenance, or removal practices.  
 Aviso: CommScope no acepta ninguna obligación ni responsabilidad como resultado de prácticas incorrectas o peligrosas de instalación, inspección, mantenimiento o retiro.  
 Avis: CommScope décline toute responsabilité pour les conséquences de procédures d’installation, d’inspection, d’entretien ou de retrait incorrectes ou dangereuses.  
 Hinweis: CommScope lehnt jede Haftung oder Verantwortung für Schäden ab, die aufgrund unsachgemäßer Installation, Überprüfung, Wartung oder Demontage auftreten.  
 Atenção: A CommScope abdica do direito de toda responsabilidade pelos resultados de práticas inadequadas e sem segurança de instalação, inspeção, manutenção ou remoção.  
 Avvertenza: CommScope declina eventuali responsabilità derivanti dall’esecuzione di procedure di installazione, ispezione, manutenzione e smontaggio improprie o poco sicure.  
 注意: CommScope 公司申明對於不恰當或不安全的安裝、檢驗、維修或拆卸操作所導致的後果不負責任 何義務和責任

© 2024 CommScope