

# R3V6-65B-R9



18-port sector antenna, 6x 694-960, 12x 1695-2690 MHz, 65° HPBW, 9xRET

- All Internal RET actuators are connected in "Cascaded SRET" configuration
- Supports re-configurable antenna sharing capability enabling control of the internal RET system using up to two separate RET compatible OEM radios

## General Specifications

<b>Antenna Type</b>	Sector
<b>Band</b>	Multiband
<b>Color</b>	Light Gray (RAL 7035)
<b>Grounding Type</b>	RF connector inner conductor and body grounded to reflector and mounting bracket
<b>Performance Note</b>	Outdoor usage
<b>Radome Material</b>	Fiberglass, UV resistant
<b>Reflector Material</b>	Aluminum
<b>RF Connector Interface</b>	4.3-10 Female
<b>RF Connector Location</b>	Bottom
<b>RF Connector Quantity, mid band</b>	12
<b>RF Connector Quantity, low band</b>	6
<b>RF Connector Quantity, total</b>	18

## Remote Electrical Tilt (RET) Information

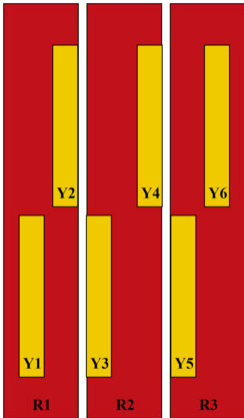
<b>RET Hardware</b>	CommRET v2
<b>RET Interface</b>	8-pin DIN Female   8-pin DIN Male
<b>RET Interface, quantity</b>	2 female   2 male
<b>Input Voltage</b>	10-30 Vdc
<b>Internal RET</b>	Low band (3)   Mid band (6)
<b>Power Consumption, active state, maximum</b>	8 W
<b>Power Consumption, idle state, maximum</b>	1 W
<b>Protocol</b>	3GPP/AISG 2.0

## Dimensions

# R3V6-65B-R9

<b>Width</b>	579 mm   22.795 in
<b>Depth</b>	212 mm   8.346 in
<b>Length</b>	2100 mm   82.677 in
<b>Net Weight, antenna only</b>	47.7 kg   105.16 lb

## Array Layout

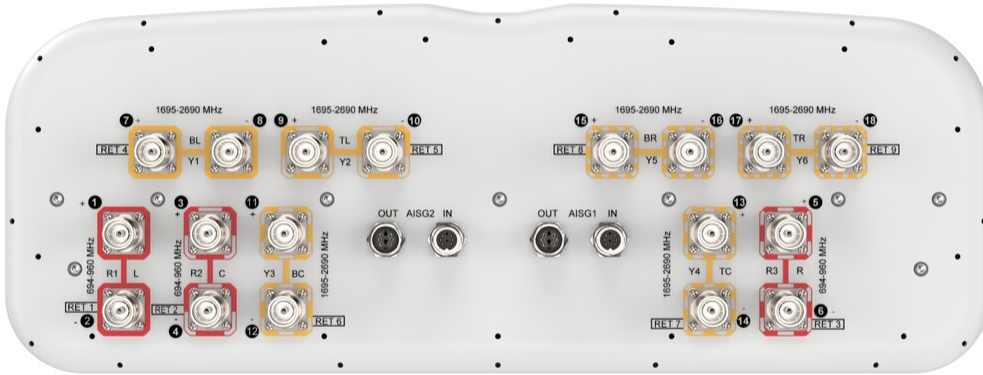


Array ID	Frequency (MHz)	RF Connector	RET (SRET)	AISG No.	AISG RET UID
R1	694-960	1 - 2	1	AISG1	CPxxxxxxxxxxxxxxxxR1
R2	694-960	3 - 4	2	AISG1	CPxxxxxxxxxxxxxxxxR2
R3	694-960	5 - 6	3	AISG1	CPxxxxxxxxxxxxxxxxR3
Y1	1695-2690	7 - 8	4	AISG1	CPxxxxxxxxxxxxxxxxY1
Y2	1695-2690	9 - 10	5	AISG1	CPxxxxxxxxxxxxxxxxY2
Y3	1695-2690	11 - 12	6	AISG1	CPxxxxxxxxxxxxxxxxY3
Y4	1695-2690	13 - 14	7	AISG1	CPxxxxxxxxxxxxxxxxY4
Y5	1695-2690	15 - 16	8	AISG1	CPxxxxxxxxxxxxxxxxY5
Y6	1695-2690	17 - 18	9	AISG1	CPxxxxxxxxxxxxxxxxY6

(Sizes of colored boxes are not true depictions of array sizes)

## Port Configuration

# R3V6-65B-R9



## Electrical Specifications

<b>Impedance</b>	50 ohm
<b>Operating Frequency Band</b>	1695 – 2690 MHz   694 – 960 MHz
<b>Polarization</b>	±45°
<b>Total Input Power, maximum</b>	900 W @ 50 °C

## Electrical Specifications, BASTA

Frequency Band, MHz	698–806	790–894	890–960	698–806	790–894	890–960
<b>Gain by all Beam Tilts, average, dBi</b>	13.8	14.3	14.8	12.3	13.6	14.7
<b>USLS, beampeak to 20° above beampeak, dB</b>	14	15	13	12	16	16

# R3V6-65B-R9

<b>CPR at Boresight, dB</b>	18	18	21	16	18	22
<b>CPR at Sector, dB</b>	10	6	6	8	6	6

## Electrical Specifications

**Frequency Band, MHz** 1695–1900

**Isolation, Cross Polarization, port to port, dB** 987

## Electrical Specifications, BASTA

<b>Frequency Band, MHz</b>	<b>1695–1900</b>	<b>1920–2300</b>	<b>2300–2500</b>	<b>2490–2690</b>
<b>Gain by all Beam Tilts, average, dBi</b>	16.1	16.9	17.8	17.9
<b>USLS, beampeak to 20° above beampeak, dB</b>	15	15	16	16
<b>CPR at Boresight, dB</b>	18	18	19	21
<b>CPR at Sector, dB</b>	6	3	5	5

## Electrical Specifications, BASTA

<b>Frequency Band, MHz</b>	<b>1695–1900</b>	<b>1920–2300</b>	<b>2300–2500</b>	<b>2490–2690</b>
<b>Gain by all Beam Tilts, average, dBi</b>	15.9	16.7	17.3	17.3
<b>USLS, beampeak to 20° above beampeak, dB</b>	11	12	12	13
<b>CPR at Boresight, dB</b>	19	21	21	22
<b>CPR at Sector, dB</b>	5	3	4	2

## Mechanical Specifications

<b>Wind Loading @ Velocity, frontal</b>	576.0 N @ 150 km/h (129.5 lbf @ 150 km/h)
<b>Wind Loading @ Velocity, lateral</b>	241.0 N @ 150 km/h (54.2 lbf @ 150 km/h)
<b>Wind Loading @ Velocity, maximum</b>	919.0 N @ 150 km/h (206.6 lbf @ 150 km/h)
<b>Wind Loading @ Velocity, rear</b>	584.0 N @ 150 km/h (131.3 lbf @ 150 km/h)
<b>Wind Speed, maximum</b>	241 km/h (150 mph)

## Packaging and Weights

<b>Width, packed</b>	681 mm   26.811 in
<b>Depth, packed</b>	368 mm   14.488 in
<b>Length, packed</b>	2239 mm   88.15 in

# R3V6-65B-R9

---

**Weight, gross**

62.3 kg | 137.348 lb

## Regulatory Compliance/Certifications

**Agency**

**Classification**

CHINA-ROHS

Below maximum concentration value

ISO 9001:2015

Designed, manufactured and/or distributed under this quality management system

REACH-SVHC

Compliant as per SVHC revision on [www.commscope.com/ProductCompliance](http://www.commscope.com/ProductCompliance)

ROHS

Compliant

UK-ROHS

Compliant



## Included Products

BSAMNT-4

- Wide Profile Antenna Downtilt Mounting Kit for 2.4 - 4.5 in (60 - 115 mm) OD round members. Kit contains one scissor top bracket set and one bottom bracket set.

## \* Footnotes

**Performance Note**

Severe environmental conditions may degrade optimum performance

# BSAMNT-4



Wide Profile Antenna Downtilt Mounting Kit for 2.4 - 4.5 in (60 - 115 mm) OD round members. Kit contains one scissor top bracket set and one bottom bracket set.

## Product Classification

**Product Type** Downtilt mounting kit

## General Specifications

**Application** Outdoor

**Color** Silver

## Dimensions

**Compatible Diameter, maximum** 115 mm | 4.528 in

**Compatible Diameter, minimum** 60 mm | 2.362 in

**Weight, net** 6.5 kg | 14.33 lb

## Material Specifications

**Material Type** Galvanized steel

## Packaging and Weights

**Included** Brackets | Hardware

**Packaging quantity** 1

## Regulatory Compliance/Certifications

Agency	Classification
CHINA-ROHS	Below maximum concentration value
ISO 9001:2015	Designed, manufactured and/or distributed under this quality management system
REACH-SVHC	Compliant as per SVHC revision on <a href="http://www.commscope.com/ProductCompliance">www.commscope.com/ProductCompliance</a>
ROHS	Compliant
UK-ROHS	Compliant

