

# RVV-65D-R3VB



6-port sector antenna, 2x 694–960 and 4x 1695–2690 MHz, 65° HPBW, 3x RET

- All Internal RET actuators are connected in “Cascaded SRET” configuration
- Uses the 4.3-10 connector which is 40 percent smaller than the 7-16 DIN connector

## General Specifications

<b>Antenna Type</b>	Sector
<b>Band</b>	Multiband
<b>Color</b>	Light Gray (RAL 7035)
<b>Grounding Type</b>	RF connector inner conductor and body grounded to reflector and mounting bracket
<b>Performance Note</b>	Outdoor usage
<b>Radome Material</b>	Fiberglass, UV resistant
<b>Radiator Material</b>	Aluminum
<b>Reflector Material</b>	Aluminum
<b>RF Connector Interface</b>	4.3-10 Female
<b>RF Connector Location</b>	Bottom
<b>RF Connector Quantity, mid band</b>	4
<b>RF Connector Quantity, low band</b>	2
<b>RF Connector Quantity, total</b>	6

## Remote Electrical Tilt (RET) Information

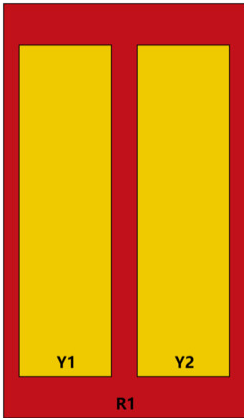
<b>RET Hardware</b>	CommRET v2
<b>RET Interface</b>	8-pin DIN Female   8-pin DIN Male
<b>RET Interface, quantity</b>	1 female   1 male
<b>Input Voltage</b>	10–30 Vdc
<b>Internal RET</b>	Low band (1)   Mid band (2)
<b>Power Consumption, active state, maximum</b>	10 W
<b>Power Consumption, idle state, maximum</b>	2 W
<b>Protocol</b>	3GPP/AISG 2.0 (Single RET)

## Dimensions

# RVV-65D-R3VB

<b>Width</b>	397 mm   15.63 in
<b>Depth</b>	157 mm   6.181 in
<b>Length</b>	2547 mm   100.276 in
<b>Net Weight, antenna only</b>	28.5 kg   62.832 lb

## Array Layout



Array ID	Frequency (MHz)	RF Connector	RET (SRET)	AISG No.	AISG RET UID
R1	694-960	1 - 2	1	AISG1	CPxxxxxxxxxxxxxxxxR1
Y1	1695-2690	3 - 4	2	AISG1	CPxxxxxxxxxxxxxxxxY1
Y2	1695-2690	5 - 6	3	AISG1	CPxxxxxxxxxxxxxxxxY2

(Sizes of colored boxes are not true depictions of array sizes)

## Port Configuration



## Electrical Specifications

<b>Impedance</b>	50 ohm
<b>Operating Frequency Band</b>	1695 – 2690 MHz   694 – 960 MHz
<b>Polarization</b>	±45°
<b>Total Input Power, maximum</b>	900 W

# RVV-65D-R3VB

## Electrical Specifications

Frequency Band, MHz	694–790	790–890	890–960	1695–1920	1920–2200	2300–2500	2500–2690
Gain, dBi	16.7	17.3	17.7	17.5	18.4	18.9	19.2
Beamwidth, Horizontal, degrees	66	62	59	67	64	64	63
Beamwidth, Vertical, degrees	8.6	7.7	7	5.7	5	4.3	4
Beam Tilt, degrees	2–12	2–12	2–12	2–12	2–12	2–12	2–12
USLS (First Lobe), dB	17	18	17	18	20	19	18
Front-to-Back Ratio, Copolarization 180° ± 30°, dB	28	31	31	27	31	31	28
Isolation, Cross Polarization, dB	28	28	28	28	28	28	28
Isolation, Inter-band, dB	28	28	28	28	28	28	28
VSWR   Return loss, dB	1.5 14.0	1.5 14.0	1.5 14.0	1.5 14.0	1.5 14.0	1.5 14.0	1.5 14.0
PIM, 3rd Order, 2 x 20 W, dBc	-153	-153	-153	-153	-153	-153	-153
Input Power per Port, maximum, watts	250	250	250	200	200	200	200

## Electrical Specifications, BASTA

Frequency Band, MHz	694–790	790–890	890–960	1695–1920	1920–2200	2300–2500	2500–2690
Gain by all Beam Tilts, average, dBi	16.4	17.1	17.5	17.3	17.9	18.6	18.8
Gain by all Beam Tilts Tolerance, dB	±0.4	±0.3	±0.2	±0.4	±0.7	±0.5	±0.4
Beamwidth, Horizontal Tolerance, degrees	±2	±1.4	±1.7	±6.1	±4.7	±2.8	±4.2
Beamwidth, Vertical Tolerance, degrees	±0.4	±0.4	±0.3	±0.4	±0.4	±0.2	±0.2
CPR at Boresight, dB	23	26	25	26	25	31	31

## Mechanical Specifications

Wind Loading @ Velocity, frontal	669.0 N @ 150 km/h (150.4 lbf @ 150 km/h)
Wind Loading @ Velocity, lateral	366.0 N @ 150 km/h (82.3 lbf @ 150 km/h)
Wind Loading @ Velocity, rear	1,080.0 N @ 150 km/h (242.8 lbf @ 150 km/h)
Wind Speed, maximum	200 km/h (124 mph)

## Packaging and Weights

# RVV-65D-R3VB

---

<b>Width, packed</b>	492 mm   19.37 in
<b>Depth, packed</b>	277 mm   10.906 in
<b>Length, packed</b>	2747 mm   108.15 in
<b>Weight, gross</b>	41.5 kg   91.492 lb

## Regulatory Compliance/Certifications

<b>Agency</b>	<b>Classification</b>
CHINA-ROHS	Below maximum concentration value
ISO 9001:2015	Designed, manufactured and/or distributed under this quality management system
REACH-SVHC	Compliant as per SVHC revision on <a href="http://www.commscope.com/ProductCompliance">www.commscope.com/ProductCompliance</a>
ROHS	Compliant
UK-ROHS	Compliant



## Included Products

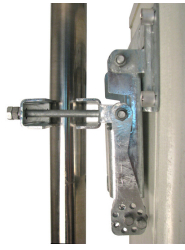
BSAMNT-B95-03	-	Wide Profile Antenna Downtilt Mounting Kit for 2.4 - 4.5 in (60 - 115 mm) OD round members. Kit contains one scissor top bracket set and one bottom bracket set.
---------------	---	--

## \* Footnotes

<b>Performance Note</b>	Severe environmental conditions may degrade optimum performance
-------------------------	---

# BSAMNT-B95-03

---



Wide Profile Antenna Downtilt Mounting Kit for 2.4 - 4.5 in (60 - 115 mm) OD round members. Kit contains one scissor top bracket set and one bottom bracket set.

## Product Classification

**Product Type** Downtilt mounting kit

## General Specifications

**Application** Outdoor

**Color** Silver

## Dimensions

**Compatible Diameter, maximum** 114.3 mm | 4.5 in

**Compatible Diameter, minimum** 61 mm | 2.402 in

**Weight, net** 4.5 kg | 9.921 lb

## Material Specifications

**Material Type** Galvanized steel

## Packaging and Weights

**Included** Brackets | Hardware

**Packaging quantity** 2

## Regulatory Compliance/Certifications

### Agency

CE  
ISO 9001:2015

### Classification

Compliant with the relevant CE product directives  
Designed, manufactured and/or distributed under this quality management system

