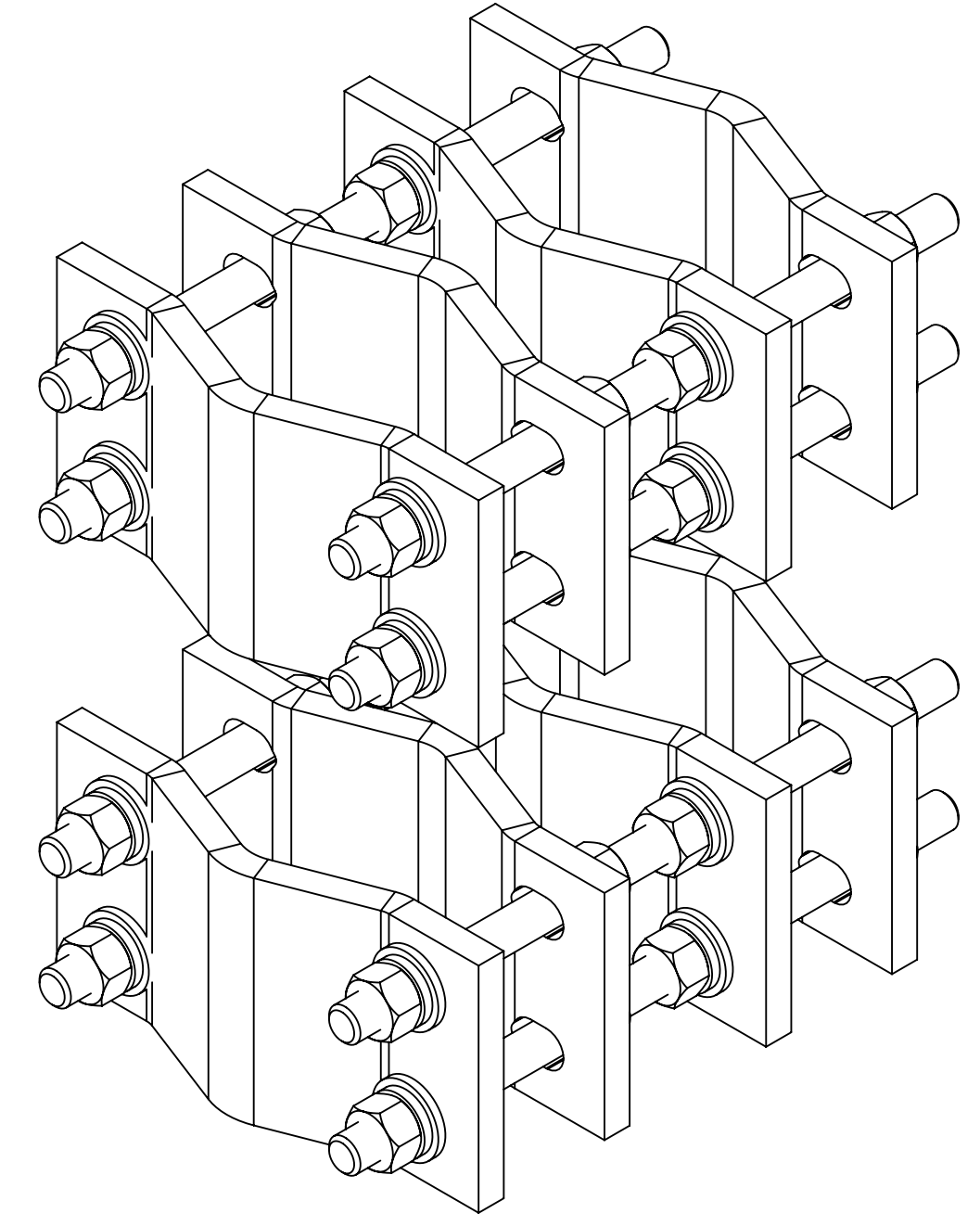
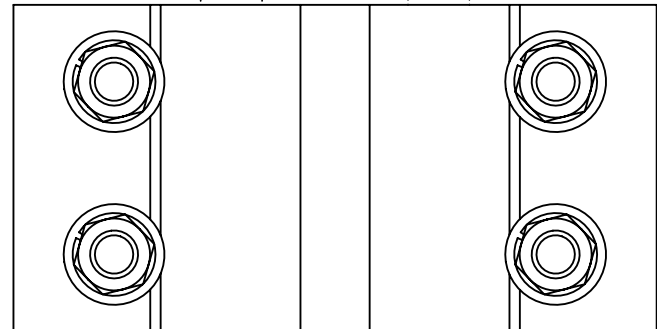
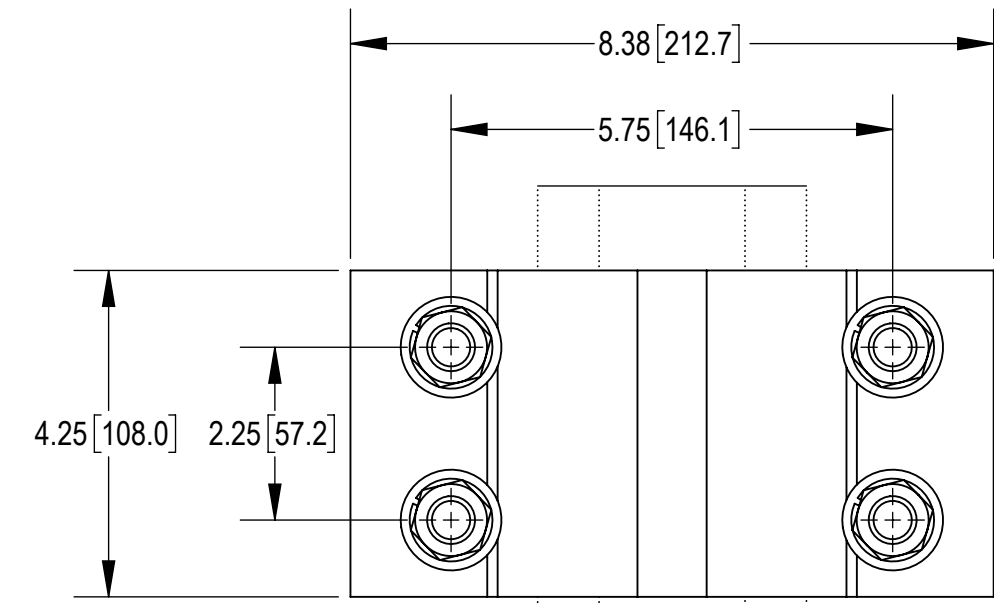
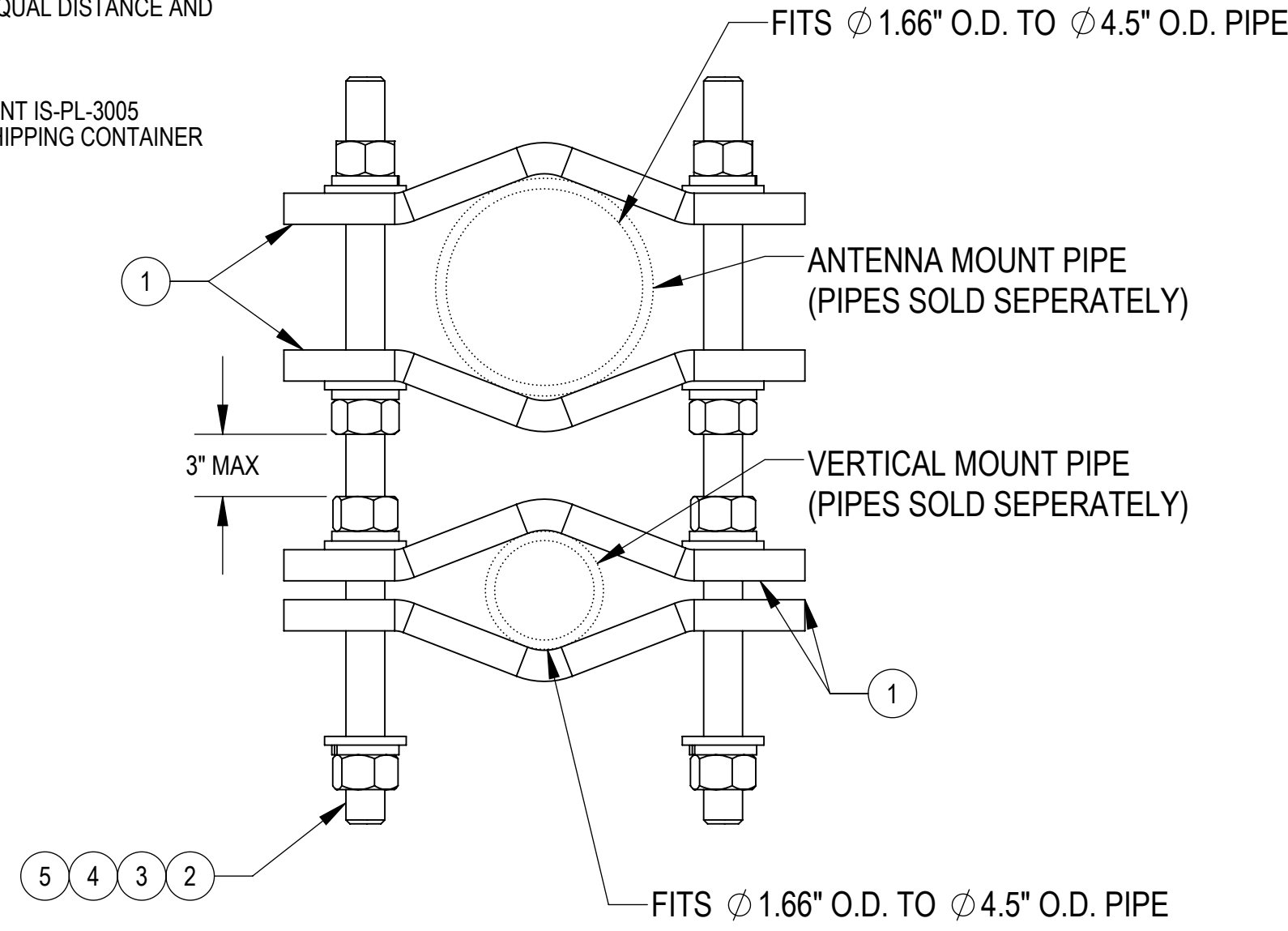


- 1.0 GENERAL NOTES
 - 1.1 ALL METRIC DIMENSIONS ARE IN BRACKETS [X.X]
 - 1.2 MARK PART WITH IDENTIFICATION NUMBER.
- 2.0 DESIGN NOTES
 - 2.1 DESIGNED PER CUSTOMER REQUIREMENTS.
- 3.0 MANUFACTURING/SPECIAL REQUIREMENTS
 - 3.1 TIGHTEN ALL BOLTS SECURING FLAT PLATES BY THE TURN-OF-NUT METHOD. TIGHTEN ALL U-BOLTS USING TURN-OF-NUT METHOD WITH ATTENTION TO LEAVE EQUAL DISTANCE AND EQUAL FORCE ON EACH LEG OF THE U-BOLT.
- 4.0 TEST
- 5.0 PACKAGING
 - 5.1 PACKAGING SHALL MEET COMMSCOPE REQUIREMENTS PER DOCUMENT IS-PL-3005
 - 5.2 PRINTED DOCUMENT TO BE PLACED INSIDE POLYBAG AND THEN IN SHIPPING CONTAINER
 - 5.3 EXTRA HARDWARE MAYBE SUPPLIED, BAGGED AND SHIPPED

REVISIONS			
REV.	DESCRIPTION	DATE	APPROVED
A	INITIAL RELEASE	RJC 11MAY20	BCAMPBELLCON 8000040262
B	V-CLAMP WAS MTC4104-0010, GWF05A WAS GWF-05, CORRECT FITS PIPE NOTES ON DRAWING	YMENG 07SEP22	VCORTEZ1 40156275CMO



COMPONENT PART NUMBERS PROVIDED FOR ASSEMBLY PURPOSES;
INDIVIDUAL COMPONENTS MAY BE SHIPPED AS PARTS WITHIN AN INCLUDED KIT.

ITEM	PART NO.	DESCRIPTION	QTY.
1	V-CLAMP	CLAMP, 4 SLOT V	8
2	MT-381	5/8" X 12" GALV THREADED ROD	8
3	GWF05A	GALV FLAT WASHER HARDENED 5/8", 1.3OD	32
4	GWL-05	5/8" GALV LOCK WASHER	32
5	GN-05	5/8" GALV HEX NUT	32

DENSITY	94.27	lbs/in ³
MASS	331.96	lbs
VOLUME	331.96	in ³
SURFACE AREA	2976.31	in ²
HEIGHT	(12.25[311.2])	
LENGTH	8.38[212.7]	
WIDTH	4.25[108.0]	

© 2022 CommScope, Inc. Confidential

COMMSCOPE, INC. OF NORTH CAROLINA									
TOLERANCES					SAP MATERIAL MASTER				
0 PLACE X[X] ± .25[6.3]			2 PLACE.XX[X] ± 0.06[1.5]		VZWSMART-MSK3D				
1 PLACE .X[X] ± .12[3.0]			ANGLES ± 2°						
FINISH					MATERIAL				
UNLESS OTHERWISE SPECIFIED DIMENSIONS ARE IN INCHES INTERPRET PER ANSI Y 14.5M-1994	CE	MRC	DATE	04/01/20	CLAMP, PIPE TO PIPE, 1.66" TO 4.50", HD				
	RW	YMENG	DATE	09/09/2022					
	RV		DATE	09/12/2022					
	AD	VCORTEZ1	DATE	09/22/2022					
	RE	YMENG	DATE	09/22/2022					
ECN 40156275CMO					SCALE	DOCUMENT NO.			
					1:4	VZWSMART-MSK3D			
SIZE	WORK AREA	INSL	MODEL			DRAWING			
C			VERSION	STATUS	REVISION	VERSION	STATUS	REVISION	SHEET
			04	RE	B	04	RE	B	1 OF 1