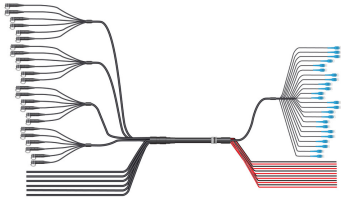


# FDH1204-48SE2



HELIAX® Direct-connect 6 x 24 hybrid trunk assembly: 6 pairs of 4AWG DC conductors x 24 pairs of single mode fibers.

- RRU (top) breakout; 6 blunt-cut power cords (6-6AWG pairs), 48 single mode fibers in outdoor-rated tails with ODC-compatible interface
- BBU (bottom) breakout; 12-4AWG power conductors blunt cut, 48 single mode fibers within 24 DLC tails

## Product Classification

|                              |   |
|------------------------------|---|
| <b>Regional Availability</b> | Asia   Australia/New Zealand   EMEA   Latin America   North America |
| <b>Portfolio</b>             | CommScope®  |
| <b>Product Type</b>          | Hybrid cable assembly   |
| <b>Product Brand</b>         | HELIAX®   |
| <b>Product Series</b>        | FDH   |

## General Specifications

|  |                       |
|--|-----------------------|
| <b>Conductors, quantity</b>              | 12                    |
| <b>Construction Type</b>                 | Direct breakout trunk |
| <b>Interface, Connector A</b>            | ODC-LC                |
| <b>Interface Feature, connector A</b>    | Outdoor               |
| <b>Interface Body Style, connector A</b> | Straight              |
| <b>Interface, Connector B</b>            | DLC                   |
| <b>Interface Feature, connector B</b>    | Standard              |
| <b>Interface Body Style, connector B</b> | Straight              |
| <b>Jacket Color</b>                      | Black                 |
| <b>Total Fibers, quantity</b>            | 48                    |

## Dimensions

|  |                     |
|--|---------------------|
| <b>Cable Assembly Length Range (m)</b> | 10 – 130            |
| <b>Diameter Over Jacket</b>            | 44.78 mm   1.763 in |
| <b>Center Conductor Gauge</b>          | 4 AWG               |

## Mechanical Specifications

|                            |                      |
|----------------------------|----------------------|
| <b>Minimum Bend Radius</b> | 523.2 mm   20.598 in |
|----------------------------|----------------------|

# FDH1204-48SE2

---

**Minimum Bend Radius, furcation** 30 mm | 1.181 in

## Optical Specifications

**Fiber Mode** Singlemode

**Fiber Type** G.657.A2/B2

**Insertion Loss, typical note** Insertion loss is measured at 1310 and 1550 nm

**Insertion Loss, typical** 0.75

## Environmental Specifications

**Operating Temperature** -40 °C to +75 °C (-40 °F to +167 °F)

## Packaging and Weights

**Cable weight** 3.4 kg/m | 2.285 lb/ft

## \* Footnotes

**Insertion Loss, typical note** Insertion loss is measured at a room temp of +20°C (+68°F)