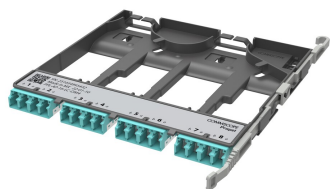


760252366 | PPL-AP-16-LC-OM4



Propel pass-through adapter pack, multimode OM4, 8 duplex LC ports

- Can be installed and removed from front or rear of panel
- QR code provides easy access to product documentation
- 8f, 12f, 16f or 24f sizes are interchangeable within Propel panels or blades
- This component requires 4 of the 12 lanes on the Propel Panel blade

Product Classification

Regional Availability	Asia Australia/New Zealand EMEA Latin America North America
Portfolio	SYSTIMAX®
Product Type	Fiber adapter pack
Product Brand	Propel
Product Series	PPL

General Specifications

Adapter Color	Aqua
Interface	LC/UPC
Interface Feature	Dust caps Internal shutters
Total Ports, quantity	8

Dimensions

Height	11 mm 0.433 in
Width	131 mm 5.157 in
Depth	170 mm 6.693 in

Optical Specifications

Fiber Mode	Multimode
-------------------	-----------

Environmental Specifications

Safety Standard	c-UL-us
------------------------	---------

Packaging and Weights

Packaging quantity	1
---------------------------	---

Regulatory Compliance/Certifications

Agency	Classification
CHINA-ROHS	Below maximum concentration value
REACH-SVHC	Compliant as per SVHC revision on www.commscope.com/ProductCompliance
ROHS	Compliant
UK-ROHS	Compliant

