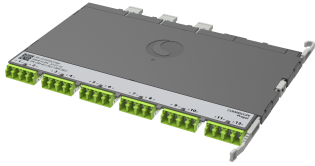


760252338 | PPL-DM-8U-24LC-OM5-BEU



Propel ULL Multimode OM5 MPO-08 Distribution Module, 12 duplex LC to 3X8f MPO/UPC non-pinned, Method B Enhanced

- Ultra-low loss (ULL) with Method B Enhanced polarity
- Can be installed and removed from front or rear of panel
- Serialized QR code provides easy access to factory optical test results
- This component requires 6 of the 12 lanes on the Propel Panel blade

Product Classification

Regional Availability	Asia Australia/New Zealand EMEA Latin America North America
Portfolio	SYSTIMAX®
Product Type	Breakout module
Product Brand	Propel
Product Series	PPL

General Specifications

Functionality	Breakout
Color, front	Lime green
Color, rear	Gray
Interface, front	LC/UPC
Interface Feature, front	Internal shutters
Interface, rear	MPO
Interface Feature, rear	Internal shutters Key up/up Standard Unpinned
Polarity	Method B Enhanced (ULL)
Total Fibers, quantity	24
Total Ports, quantity, front	12
Total Ports, quantity, rear	3

Dimensions

Height	11 mm 0.433 in
Width	196 mm 7.717 in
Depth	170 mm 6.693 in

Optical Specifications

760252338 | PPL-DM-8U-24LC-OM5-BEU

Fiber Mode	Multimode
Fiber Type	OM5, LazrSPEED® wideband
Insertion Loss, maximum	0.35 dB

Environmental Specifications

Qualification Standards	IEC 61753-1 TIA-568.3-D
Safety Standard	CE CSA UL UL 62368

Packaging and Weights

Packaging quantity	1
---------------------------	---

Regulatory Compliance/Certifications

Agency	Classification
CHINA-ROHS	Below maximum concentration value
REACH-SVHC	Compliant as per SVHC revision on www.commscope.com/ProductCompliance
ROHS	Compliant
UK-ROHS	Compliant

