

# RRV4-6585B-R6H4



12-port sector antenna, 4x 694–960MHz, 65° HPBW and 8x 1695–2690 MHz, 85° HPBW, 6x RET

- All Internal RET actuators are connected in “Cascaded SRET” configuration
- Antenna shape optimized for wind load reduction

## General Specifications

<b>Antenna Type</b>	Sector
<b>Band</b>	Multiband
<b>Color</b>	Light Gray (RAL 7035)
<b>Grounding Type</b>	RF connector inner conductor and body grounded to reflector and mounting bracket
<b>Performance Note</b>	Outdoor usage
<b>Radome Material</b>	Fiberglass, UV resistant
<b>Reflector Material</b>	Aluminum
<b>RF Connector Interface</b>	4.3-10 Female
<b>RF Connector Location</b>	Bottom
<b>RF Connector Quantity, high band</b>	8
<b>RF Connector Quantity, low band</b>	4
<b>RF Connector Quantity, total</b>	12

## Remote Electrical Tilt (RET) Information

<b>RET Hardware</b>	CommRET v2
<b>RET Interface</b>	8-pin DIN Female   8-pin DIN Male
<b>RET Interface, quantity</b>	2 female   2 male
<b>Input Voltage</b>	10–30 Vdc
<b>Internal RET</b>	High band (4)   Low band (2)
<b>Power Consumption, active state, maximum</b>	8 W
<b>Power Consumption, idle state, maximum</b>	1 W
<b>Protocol</b>	3GPP/AISG 2.0

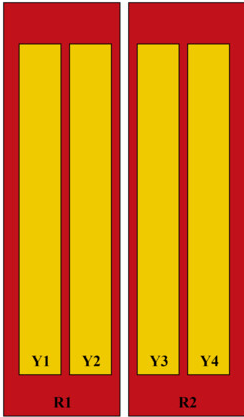
## Dimensions

<b>Width</b>	498 mm   19.606 in
--------------	--------------------

# RRV4-6585B-R6H4

<b>Depth</b>	197 mm   7.756 in
<b>Length</b>	2180 mm   85.827 in
<b>Net Weight, antenna only</b>	42 kg   92.594 lb

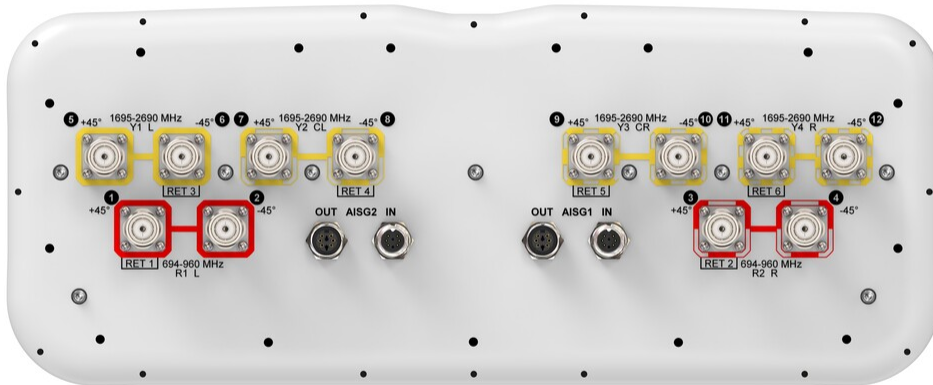
## Array Layout



Array ID	Frequency (MHz)	RF Connector	HPBW	RET (SRET)	AISG No.	AISG RET UID
R1	694-960	1 - 2	65°	1	AISG1	CPxxxxxxxxxxxxxxxxR1
R2	694-960	3 - 4	65°	2	AISG1	CPxxxxxxxxxxxxxxxxR2
Y1	1695-2690	5 - 6	85°	3	AISG1	CPxxxxxxxxxxxxxxxxY1
Y2	1695-2690	7 - 8	85°	4	AISG1	CPxxxxxxxxxxxxxxxxY2
Y3	1695-2690	9 - 10	85°	5	AISG1	CPxxxxxxxxxxxxxxxxY3
Y4	1695-2690	11 - 12	85°	6	AISG1	CPxxxxxxxxxxxxxxxxY4

(Sizes of colored boxes are not true depictions of array sizes)

## Port Configuration



## Electrical Specifications

# RRV4-6585B-R6H4

<b>Impedance</b>	50 ohm
<b>Operating Frequency Band</b>	1695 – 2690 MHz   694 – 960 MHz
<b>Polarization</b>	±45°
<b>Total Input Power, maximum</b>	900 W @ 50 °C

## Electrical Specifications

Frequency Band, MHz	694–790	790–862	870–960	1710–1880	1920–2170	2490–2690
<b>Gain, dBi</b>	15.4	15.5	16	17.2	18.2	19
<b>Beamwidth, Horizontal, degrees</b>	71	64	63	83	77	66
<b>Beamwidth, Vertical, degrees</b>	10.3	9.3	8.6	5.8	5.2	4.2
<b>Beam Tilt, degrees</b>	2–14	2–14	2–14	2–12	2–12	2–12
<b>USLS (First Lobe), dB</b>	17	17	20	17	15	18
<b>Front-to-Back Ratio at 180°, dB</b>	32	31	30	34	28	32
<b>Isolation, Cross Polarization, dB</b>	28	28	28	25	25	25
<b>Isolation, Inter-band, dB</b>	28	28	28	27	27	27
<b>VSWR   Return loss, dB</b>	1.5 14.0	1.5 14.0	1.5 14.0	1.5 14.0	1.5 14.0	1.5 14.0
<b>PIM, 3rd Order, 2 x 20 W, dBc</b>	-153	-153	-153	-153	-153	-153
<b>Input Power per Port at 50°C, maximum, watts</b>	250	250	250	200	200	150

## Electrical Specifications, BASTA

Frequency Band, MHz	694–790	790–862	870–960	1710–1880	1920–2170	2490–2690
<b>Gain by all Beam Tilts, average, dBi</b>	15	15.3	15.6	16.6	17.5	18.5
<b>Gain by all Beam Tilts Tolerance, dB</b>	±0.4	±0.4	±0.6	±0.7	±0.8	±0.7
<b>Beamwidth, Horizontal Tolerance, degrees</b>	±6.8	±3.8	±3.3	±6.7	±9.4	±6.8
<b>Beamwidth, Vertical Tolerance, degrees</b>	±0.6	±0.7	±0.7	±0.4	±0.4	±0.2
<b>USLS, beampeak to 20° above beampeak, dB</b>	17	16	16	14	14	15
<b>Front-to-Back Total Power at 180° ± 30°, dB</b>	21	22	22	26	23	26
<b>CPR at Boresight, dB</b>	22	21	20	19	18	15

# RRV4-6585B-R6H4

<b>CPR at Sector, dB</b>	12	8	12	8	8	4
--------------------------	----	---	----	---	---	---

## Mechanical Specifications

<b>Wind Loading @ Velocity, frontal</b>	760.0 N @ 150 km/h (170.9 lbf @ 150 km/h)
<b>Wind Loading @ Velocity, lateral</b>	233.0 N @ 150 km/h (52.4 lbf @ 150 km/h)
<b>Wind Loading @ Velocity, maximum</b>	911.0 N @ 150 km/h (204.8 lbf @ 150 km/h)
<b>Wind Loading @ Velocity, rear</b>	523.0 N @ 150 km/h (117.6 lbf @ 150 km/h)
<b>Wind Speed, maximum</b>	241 km/h (150 mph)

## Packaging and Weights

<b>Width, packed</b>	565 mm   22.244 in
<b>Depth, packed</b>	309 mm   12.165 in
<b>Length, packed</b>	2367 mm   93.189 in
<b>Weight, gross</b>	56.5 kg   124.561 lb

## Regulatory Compliance/Certifications

<b>Agency</b>	<b>Classification</b>
CHINA-ROHS	Above maximum concentration value
ISO 9001:2015	Designed, manufactured and/or distributed under this quality management system
ROHS	Compliant/Exempted
UK-ROHS	Compliant/Exempted



## Included Products

BSAMNT-4	-	Wide Profile Antenna Downtilt Mounting Kit for 2.4 - 4.5 in (60 - 115 mm) OD round members. Kit contains one scissor top bracket set and one bottom bracket set.
----------	---	--

## \* Footnotes

<b>Performance Note</b>	Severe environmental conditions may degrade optimum performance
-------------------------	---