

JAVV-33C-R3



8-port sector antenna, 2x 698–803, 2x 824–894 and 4x 1695–2690MHz, 33° HPBW, low bands each have a RET and high bands share a RET

- One RET for 700MHz, one RET for 850MHz, and one RET for both high bands to ensure same tilt level for 4x Rx or 4x MIMO
- Internal filter on low band and interleaved dipole technology providing for attractive, low wind load mechanical package
- Narrow beamwidth capacity antenna for higher level of densification and enhanced data throughput

General Specifications

Antenna Type	Sector
Band	Multiband
Color	Light Gray (RAL 7035)
Grounding Type	RF connector body grounded to reflector and mounting bracket
Performance Note	Outdoor usage
Radome Material	Fiberglass, UV resistant
Reflector Material	Aluminum
RF Connector Interface	4.3-10 Female
RF Connector Location	Bottom
RF Connector Quantity, mid band	4
RF Connector Quantity, low band	4
RF Connector Quantity, total	8

Remote Electrical Tilt (RET) Information

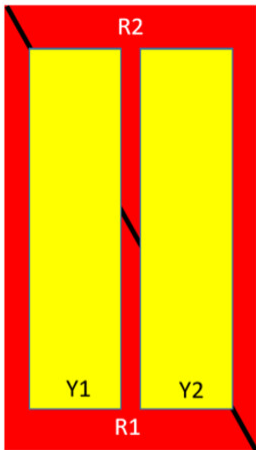
RET Hardware	CommRET v2
RET Interface	8-pin DIN Female 8-pin DIN Male
RET Interface, quantity	1 female 1 male
Input Voltage	10–30 Vdc
Internal RET	Low band (2) Mid band (1)
Power Consumption, active state, maximum	10 W
Power Consumption, idle state, maximum	2 W
Protocol	3GPP/AISG 2.0 (Single RET)

JAVV-33C-R3

Dimensions

Width	640 mm 25.197 in
Depth	235 mm 9.252 in
Length	2438 mm 95.984 in
Net Weight, antenna only	64 kg 141.096 lb

Array Layout



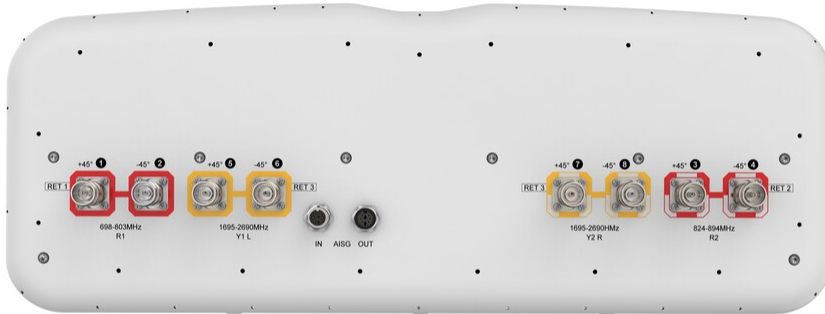
Array	Freq (MHz)	Conns	RET (SRET)	AISG RET UID
R1	698-803	1-2	1	CPxxxxxxxxxxxxxxxxR1
R2	824-894	3-4	2	CPxxxxxxxxxxxxxxxxR2
Y1	1695-2690	5-6	3	CPxxxxxxxxxxxxxxxxY1
Y2	1695-2690	7-8		

Left Right
Bottom

(Sizes of colored boxes are not true depictions of array sizes)

Port Configuration

JAVV-33C-R3



Electrical Specifications

Impedance	50 ohm
Operating Frequency Band	1695 – 2690 MHz 698 – 803 MHz 824 – 894 MHz
Polarization	±45°
Total Input Power, maximum	800 W @ 50 °C

Electrical Specifications

Frequency Band, MHz	698–803	824–894	1695–1880	1850–1990	1920–2200	2300–2690
Gain, dBi	18.3	19	20	20.3	20.8	21.7
Beamwidth, Horizontal, degrees	35	31	34	34	33	27
Beamwidth, Vertical, degrees	9.9	8.7	5.8	5.4	5.1	4.4
Beam Tilt, degrees	0–10	0–10	2–12	2–12	2–12	2–12
Horizontal Sidelobe, dB	21	20	19	17	17	16
USLS (First Lobe), dB	17	18	18	17	18	20
Front-to-Back Ratio at 180°, dB	32	36	34	35	37	36
Isolation, Cross Polarization, dB	25	25	25	25	25	25
Isolation, Inter-band, dB	30	30	30	30	30	30

JAVV-33C-R3

VSWR Return loss, dB	1.5 14.0	1.5 14.0	1.5 14.0	1.5 14.0	1.5 14.0	1.5 14.0
PIM, 3rd Order, 2 x 20 W, dBc	-153	-153	-153	-153	-153	-153
Input Power per Port at 50°C, maximum, watts	150	150	250	250	250	200

Electrical Specifications, BASTA

Frequency Band, MHz	698–803	824–894	1695–1880	1850–1990	1920–2200	2300–2690
Gain by all Beam Tilts, average, dBi	18.1	18.8	19.6	20.1	20.4	21.3
Gain by all Beam Tilts Tolerance, dB	±0.4	±0.4	±0.7	±0.3	±0.5	±0.5
Beamwidth, Horizontal Tolerance, degrees	±3.3	±0.7	±3.3	±1	±1.6	±2.3
Beamwidth, Vertical Tolerance, degrees	±0.5	±0.4	±0.3	±0.2	±0.3	±0.3
USLS, beampeak to 20° above beampeak, dB	17	17	16	17	17	17
Front-to-Back Total Power at 180° ± 30°, dB	28	28	29	30	30	30
CPR at Boresight, dB	18	17	18	21	20	21
CPR at 10 dB Horizontal Beamwidth, dB	8	16	13	14	13	12

Mechanical Specifications

Wind Loading @ Velocity, frontal	954.0 N @ 150 km/h (214.5 lbf @ 150 km/h)
Wind Loading @ Velocity, lateral	355.0 N @ 150 km/h (79.8 lbf @ 150 km/h)
Wind Loading @ Velocity, maximum	1,434.0 N @ 150 km/h (322.4 lbf @ 150 km/h)
Wind Loading @ Velocity, rear	1,086.0 N @ 150 km/h (244.1 lbf @ 150 km/h)
Wind Speed, maximum	241 km/h (150 mph)

Packaging and Weights

Width, packed	752 mm 29.606 in
Depth, packed	382 mm 15.039 in
Length, packed	2590 mm 101.969 in
Weight, gross	88 kg 194.007 lb

Regulatory Compliance/Certifications

Agency	Classification
--------	----------------

JAVV-33C-R3

CHINA-ROHS	Above maximum concentration value
ISO 9001:2015	Designed, manufactured and/or distributed under this quality management system
ROHS	Compliant/Exempted
UK-ROHS	Compliant/Exempted



Included Products

- | | | |
|-----------|---|--|
| BSAMNT-4 | - | Wide Profile Antenna Downtilt Mounting Kit for 2.4 - 4.5 in (60 - 115 mm) OD round members. Kit contains one scissor top bracket set and one bottom bracket set. |
| BSAMNT-M4 | - | Middle Downtilt Mounting Kit for Long Antennas for 2.4 - 4.5 in (60 - 115 mm) OD round members. Kit contains one scissor bracket set. |

* Footnotes

Performance Note Severe environmental conditions may degrade optimum performance