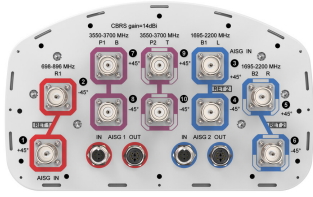


NHHSS-65B-R2BT8-V2



10-port sector antenna 2x 698-896, 4x 1695-2200 and 4x 3550-3700 MHz, 65° HPBW, 2x RETs and 2x SBTs.

- Perfect antenna to add 3.5GHz CBRS to macro sites
- Low band and mid band performance mirrors the performance of existing NHH hex port antennas
- Interleaved dipole technology providing for attractive, low wind load mechanical package
- Internal SBT on low and mid band allow remote RET control from the radio over the RF jumper cable
- One LB RET and one MB RET, both Mid bands are controlled by one RET to ensure same tilt level for 4x MIMO

General Specifications

Antenna Type	Sector
Band	Multiband
Color	Light Gray (RAL 7035)
Grounding Type	RF connector inner conductor and body grounded to reflector and mounting bracket
Performance Note	Outdoor usage
Radome Material	Fiberglass, UV resistant
Radiator Material	Aluminum Low loss circuit board
Reflector Material	Aluminum
RF Connector Interface	4.3-10 Female
RF Connector Location	Bottom
RF Connector Quantity, high band	4
RF Connector Quantity, mid band	4
RF Connector Quantity, low band	2
RF Connector Quantity, total	10

Remote Electrical Tilt (RET) Information

RET Hardware	CommRET v2
RET Interface	8-pin DIN Female 8-pin DIN Male
RET Interface, quantity	2 female 2 male
Input Voltage	10–30 Vdc
Internal Bias Tee	Port 1 Port 3

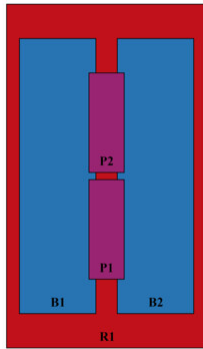
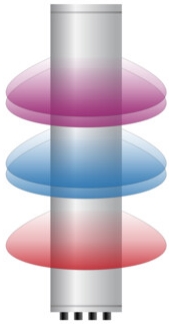
NHHSS-65B-R2BT8-V2

Internal RET	Low band (1) Mid band (1)
Power Consumption, active state, maximum	10 W
Power Consumption, idle state, maximum	2 W
Protocol	3GPP/AISG 2.0

Dimensions

Width	301 mm 11.85 in
Depth	181 mm 7.126 in
Length	1828 mm 71.969 in
Net Weight, without mounting kit	21 kg 46.297 lb

Array Layout

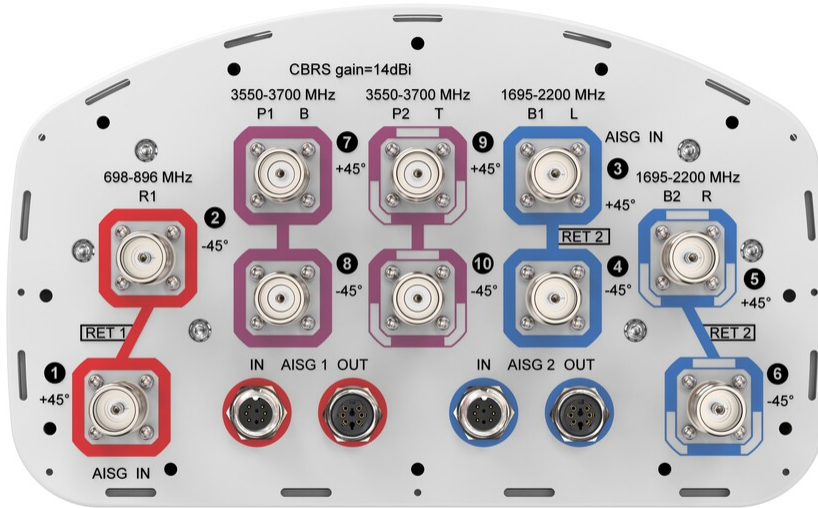


Array ID	Frequency (MHz)	RF Connector	HPBW	RET (SRET)	AISG No.	AISG RET UID
R1	698-896	1 - 2	65°	1	AISG1	CPxxxxxxxxxxxxxxxxR1
B1	1695-2200	3 - 4	65°	2	AISG2	CPxxxxxxxxxxxxxxxxB1
B2	1695-2200	5 - 6	65°			
P1	3550-3700	7 - 8	65°	N/A	NA	N/A
P2	3550-3700	9 - 10	65°			

(Sizes of colored boxes are not true depictions of array sizes)

Port Configuration

NHHSS-65B-R2BT8-V2



Electrical Specifications

Impedance	50 ohm
Operating Frequency Band	1695 – 2200 MHz 3550 – 3700 MHz 698 – 896 MHz
Polarization	±45°
Total Input Power, maximum	1,000 W @ 50 °C

Electrical Specifications

Frequency Band, MHz	698–806	806–896	1695–1880	1850–1990	1920–2200	3550–3700
Gain, dBi	14.7	14.8	17.4	17.7	17.7	13
Beamwidth, Horizontal, degrees	66	62	66	62	66	57
Beamwidth, Vertical, degrees	13	11.4	5.5	5.2	4.8	18.3
Beam Tilt, degrees	0–14	0–14	0–7	0–7	0–7	8
USLS (First Lobe), dB	17	16	15	15	15	14
Front-to-Back Ratio at 180°, dB	28	27	28	27	25	26
Isolation, Cross Polarization, dB	25	25	25	25	25	25
Isolation, Inter-band, dB	25	25	25	25	25	25
VSWR Return loss, dB	1.5 14.0	1.5 14.0	1.5 14.0	1.5 14.0	1.5 14.0	1.5 14.0

NHHSS-65B-R2BT8-V2

PIM, 3rd Order, 2 x 20 W, dBc	-153	-153	-153	-153	-153	-145
Input Power per Port at 50°C, maximum, watts	300	300	250	250	250	100

Electrical Specifications, BASTA

Frequency Band, MHz	698–806	806–896	1695–1880	1850–1990	1920–2200	3550–3700
Gain by all Beam Tilts, average, dBi	14.3	14.6	17.1	17.5	17.5	12.7
Gain by all Beam Tilts Tolerance, dB	±0.5	±0.4	±0.6	±0.3	±0.4	±0.6
USLS, beampeak to 20° above beampeak, dB	17	16	15	15	15	13
Front-to-Back Total Power at 180° ± 30°, dB	23	25	25	26	24	23
CPR at Boresight, dB	22	17	15	18	22	15
CPR at Sector, dB	10	8	11	9	7	2

Mechanical Specifications

Wind Loading @ Velocity, frontal	278.0 N @ 150 km/h (62.5 lbf @ 150 km/h)
Wind Loading @ Velocity, lateral	230.0 N @ 150 km/h (51.7 lbf @ 150 km/h)
Wind Loading @ Velocity, maximum	537.0 N @ 150 km/h (120.7 lbf @ 150 km/h)
Wind Loading @ Velocity, rear	282.0 N @ 150 km/h (63.4 lbf @ 150 km/h)
Wind Speed, maximum	241 km/h (150 mph)

Packaging and Weights

Width, packed	441 mm 17.362 in
Depth, packed	337 mm 13.268 in
Length, packed	1973 mm 77.677 in
Weight, gross	33 kg 72.752 lb

Regulatory Compliance/Certifications

Agency	Classification
CHINA-ROHS	Above maximum concentration value
ISO 9001:2015	Designed, manufactured and/or distributed under this quality management system
ROHS	Compliant/Exempted
UK-ROHS	Compliant/Exempted

NHHSS-65B-R2BT8-V2



Included Products

- BSAMNT-3 – Wide Profile Antenna Downtilt Mounting Kit for 2.4 - 4.5 in (60 - 115 mm) OD round members. Kit contains one scissor top bracket set and one bottom bracket set.

* Footnotes

Performance Note Severe environmental conditions may degrade optimum performance

BSAMNT-3



Wide Profile Antenna Downtilt Mounting Kit for 2.4 - 4.5 in (60 - 115 mm) OD round members. Kit contains one scissor top bracket set and one bottom bracket set.

Product Classification

Product Type Downtilt mounting kit

General Specifications

Application Outdoor

Color Silver

Dimensions

Compatible Diameter, maximum 115 mm | 4.528 in

Compatible Diameter, minimum 60 mm | 2.362 in

Weight, net 6.2 kg | 13.669 lb

Material Specifications

Material Type Galvanized steel

Packaging and Weights

Included Brackets | Hardware

Packaging quantity 1

Weight, gross 6.4 kg | 14.11 lb

Regulatory Compliance/Certifications

Agency	Classification
CE	Compliant with the relevant CE product directives
CHINA-ROHS	Below maximum concentration value
ISO 9001:2015	Designed, manufactured and/or distributed under this quality management system
REACH-SVHC	Compliant as per SVHC revision on www.commscope.com/ProductCompliance
ROHS	Compliant
UK-ROHS	Compliant

BSAMNT-3

