

TENIO LOOP RR

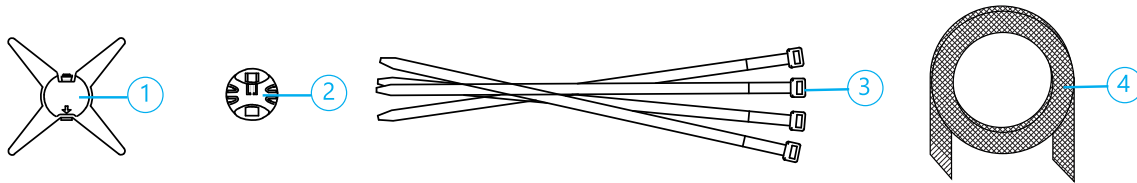
About this manual

This manual describes the installation steps to install a rollable ribbon loop cable in the TENIO closure.

1 Abbreviations

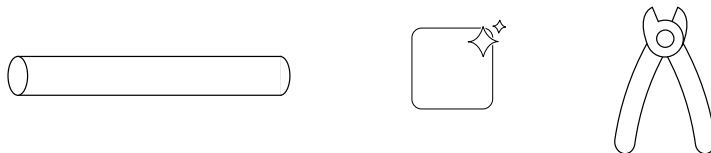
RR: Rollable Ribbon

2 Kit contents



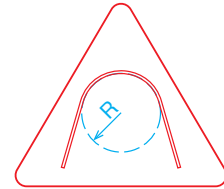
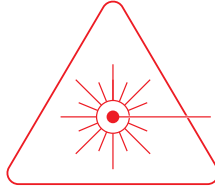
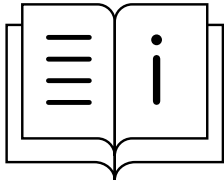
N°	Description	Qty
1	Loop island cover	1
2	Loop island	1
3	Cable ties	4
4	Tube braided	1

3 Tools



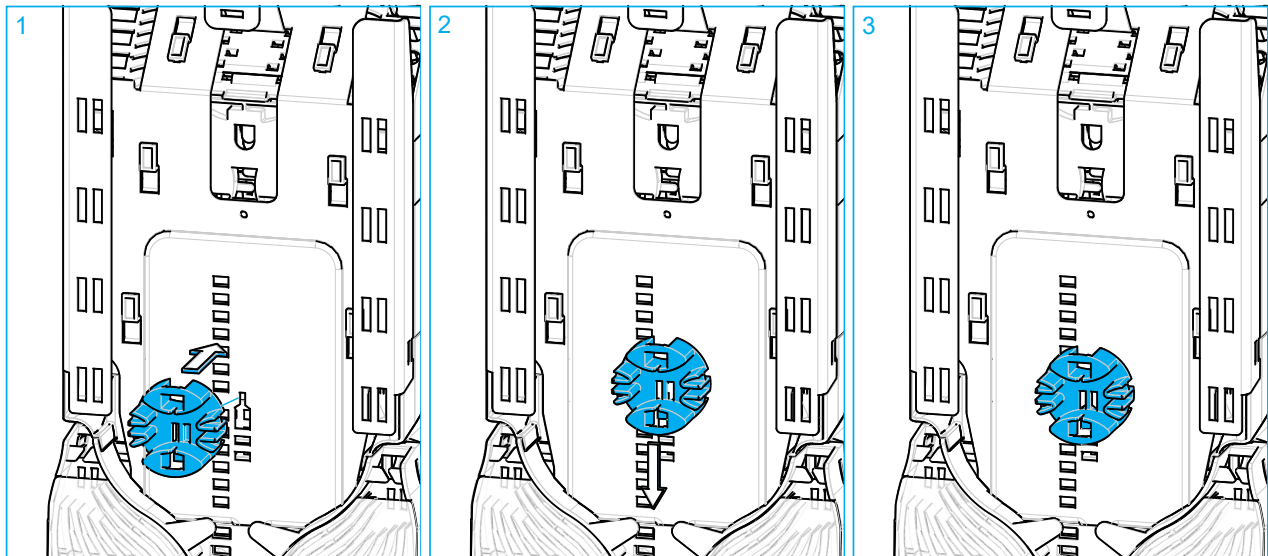
- Tube with a diameter of 1,5 cm.
- Cleaning tools (to clean the fibers if necessary).
- Cutting pliers to cut of excess cable tie strap.

4 Warnings and Cautions



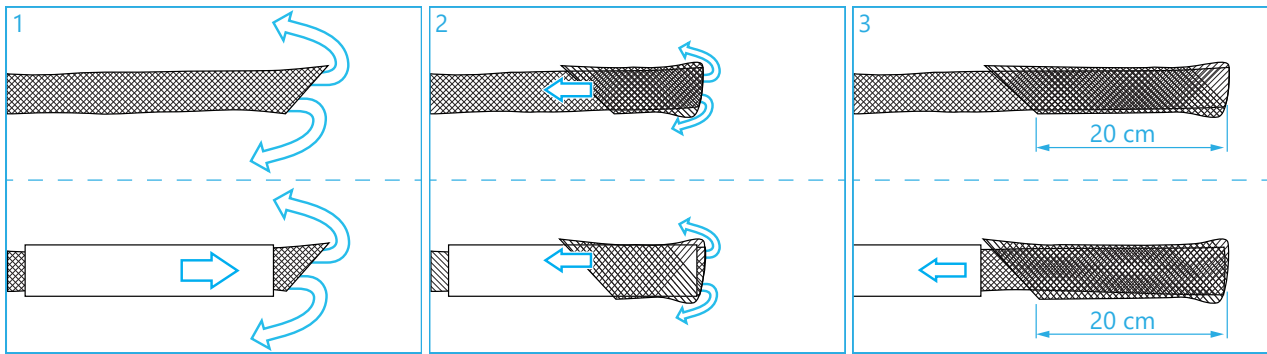
- Follow the installation instruction steps to ensure the performance of the closure. It is necessary to take precautions and keep the working space clean to protect the closure sealing materials and splices.
- Exposure to laser radiation can seriously damage the retina of the eye. Do not look into the ends of any optical fiber. Do not assume the laser power is turned off or that the fiber is disconnected at the other end. Looking into the ends of any optical fiber is entirely at your own risk. A protective cap or hood **MUST** be immediately placed over any radiating adapter or optical fiber connector to avoid the potential of dangerous amounts of radiation exposure. This practice also prevents dirt particles from entering the connector and adapter.
- Fiber optic cables may be damaged if bent or curved to a radius that is less than the recommended minimum bend radius. Always observe the recommended bend radius limit when installing fiber optic cables, subunits and patch cords.

5 Install loop island



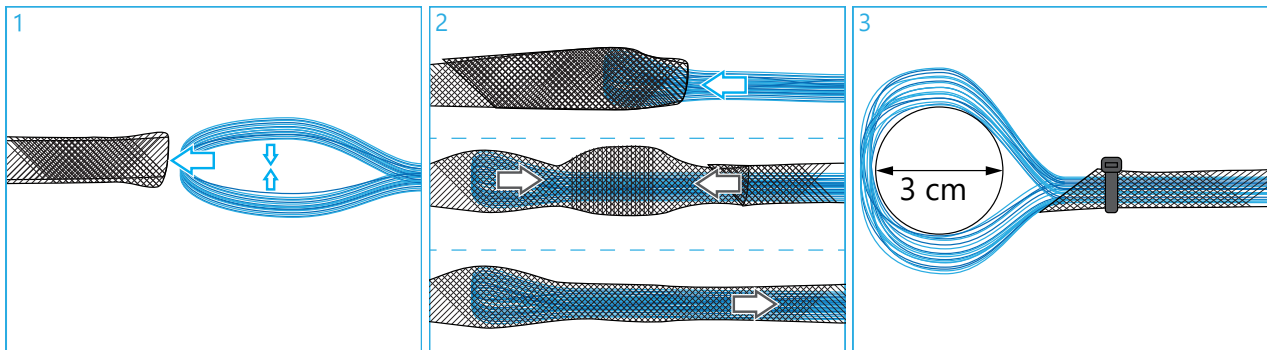
- 1 Slide the dovetail of the loop island in the opening in the basket. Make sure the loop island has the correct orientation.
- 2 Slide the loop island downwards until the snap hook snaps in place. A clicking sound is observed.
- 3 Loop island properly installed.

6 Prepare braid



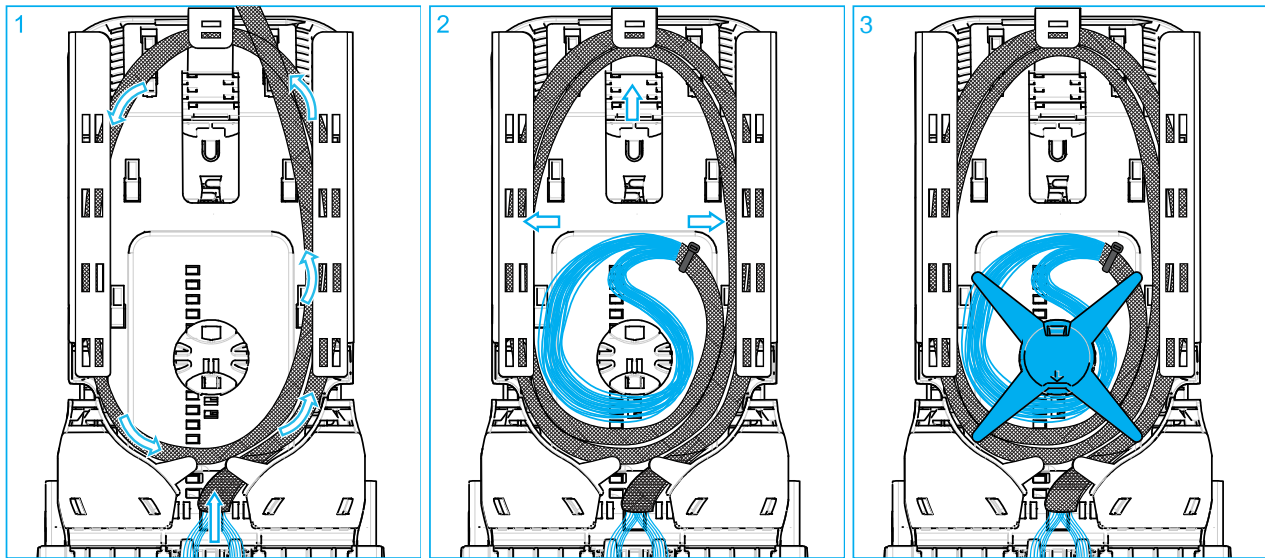
- 1 Flip one end of the braid inside out. A tube of diameter 1.5 cm can be used to facilitate this handling. Slide the tube over the braid and flip the braid over the tube.
- 2 Continue flipping the braid inside out until 20 cm of the braid is flipped inside out.
- 3 When a tube is used, remove the tube.

7 Insert loop cable through braid

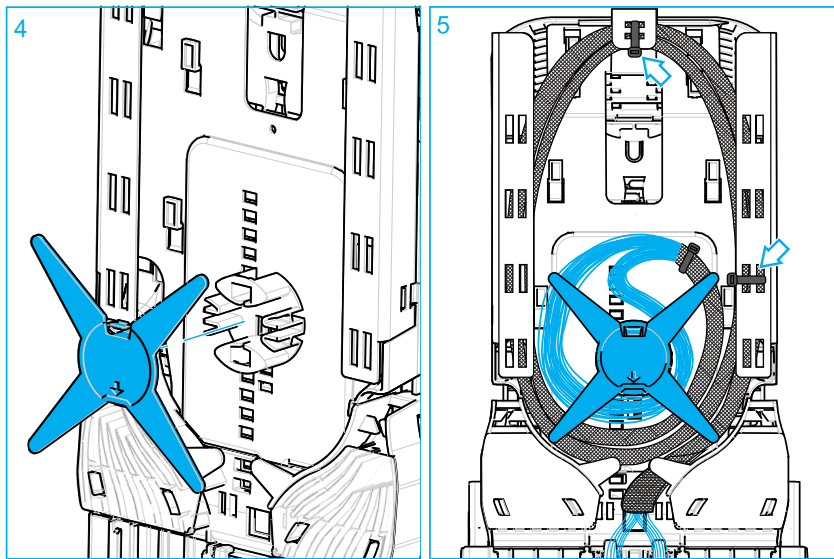


- 1 Push the RR loop through the braid. Start at the end of the braid that is flipped inside out.
- 2 Slide the RR loop to the other end of the braid. A method that can be used to move the fibers through the braid is to contract the braid over a small distance and then stretch the braid toward the end that is flipped inside out.
- 3 When the fibers are pushed through the braid, make a noose of the fibers with an inner diameter of 3 cm. Then attach the braid to the fibers with a cable tie to keep the braid in place.

8 Route braid with loop cable in basket



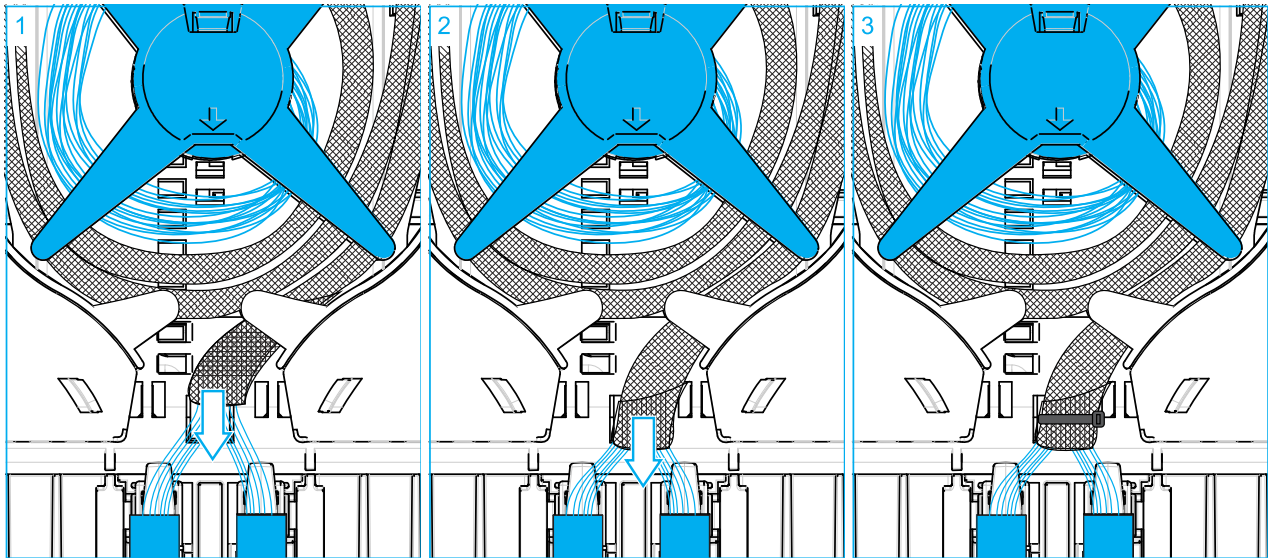
- 1 Start at the outside and position the braids under the lips at the right side. Make a loop counter clockwise until the noose (loop of fibers) can be position over the loop island.
- 2 Position the noose over the loop island and distribute the braid in the basket.
- 3 Position the loop island cover over the noose of fibers.



- 4 Click the loop island cover on the island. A clicking sound is observed.
- 5 Secure the braid to the basket with 2 cable ties.

9

Reposition braid over fibers



- 1 The braid that is flipped inside out can now be unrolled over the fibers to protect all fibers until the tubes.
- 2 Unroll the braid.
- 3 Secure the braid to the fibers with a cable tie.

10 Trade-marks

Commscope and all trademarks identified by ® or ™ are registered trademarks or trademarks, respectively, of CommScope, Inc. This document is for planning purposes only and is not intended to modify or supplement any specifications or warranties relating to CommScope products or services. CommScope is committed to the highest standards of business integrity and environmental sustainability, with a number of CommScope's facilities across the globe certified in accordance with international standards, including ISO 9001, TL 9000, and ISO 14001.

Further information regarding CommScope's commitment can be found at www.commscope.com/About-Us/Corporate-Responsibility-and-Sustainability.

This product may be covered by one or more U.S. patents or their foreign equivalents. For patents, see www.cs-pat.com

11 Contact information

Visit our website or contact your local CommScope representative for more information.

For technical assistance, customer service, or to report any missing/damaged parts, visit us at: <http://www.commscope.com/SupportCenter>