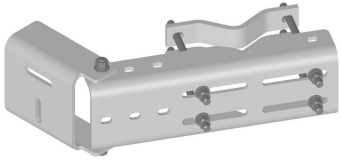


MD-CS



Universal Microwave Strut Support for 8 in round or angle 60° or 6 in angle 90° legs

Product Classification

Product Type Microwave strut support

General Specifications

Mounting Straight or tapered legs up to 203.2 mm (8 in) OD

Pipe, quantity 0

Tower Taper Non-tapered | Tapered

Dimensions

Height 152.4 mm | 6 in

Width 304.8 mm | 12 in

Length 203.2 mm | 8 in

Mounting Diameter, maximum 203.2 mm | 8 in

Material Specifications

Material Type Hot dip galvanized steel

Mechanical Specifications

Wind Rating For Specifications, please contact your local ANDREW representative

Packaging and Weights

Included Attachment hardware | Clamps

Packaging quantity 1

Weight, net 24.9 kg | 54.895 lb

Regulatory Compliance/Certifications

Agency	Classification
ISO 9001:2015	Designed, manufactured and/or distributed under this quality management system

MD-CS

* Footnotes

Wind Rating

BWS—Base Wind Speed; FBC—Florida Building Code

