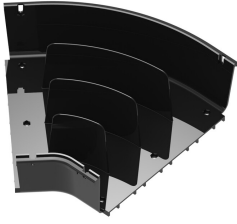


# FGSB-MH4E-F



FiberGuide® 45° Horizontal Elbow, 4x12in, Black

## Product Classification

<b>Regional Availability</b>	Asia   Australia/New Zealand   EMEA   Latin America   North America
<b>Portfolio</b>	CommScope®
<b>Product Type</b>	Elbow
<b>Product Brand</b>	FiberGuide®
<b>Product Series</b>	FGS

## General Specifications

<b>Angle/Bend Direction</b>	45°
<b>Color</b>	Black
<b>Orientation</b>	Horizontal
<b>Section Type</b>	Elbow section

## Dimensions

<b>System Dimensions</b>	102 mm x 305 mm (4 in x 12 in)
--------------------------	--------------------------------

## Ordering Tree



### Section Color

9	empty	yellow
	B	black

### Section Size

10	A	4 x 4 in
	B	4 x 6 in
	F	4 x 12 in
	G	2 x 6 in
	H	4 x 24 in
	H-VS	4 x 24 in, variable support bracket

\* Support brackets only come in black

# FGSB-MH4E-F

---

## Material Specifications

**Material Type**                      Engineering Thermoplastic

## Environmental Specifications

**Flammability Rating**              CSA S143 | UL 2024 | UL 94 V-0

**Halogen Characteristics**        Blue Angel | TCO '99 | WEEE

**Safety Standard**                  CSA | UL

## Packaging and Weights

**Weight, net**                        0.82 kg | 1.808 lb

## Regulatory Compliance/Certifications

<b>Agency</b>	<b>Classification</b>
CHINA-ROHS	Below maximum concentration value
REACH-SVHC	Compliant as per SVHC revision on <a href="http://www.commscope.com/ProductCompliance">www.commscope.com/ProductCompliance</a>
ROHS	Compliant
UK-ROHS	Compliant

