

1 Introduction

2 General

- 2.1 Kit content
- 2.2 Required tools

3 Installation

3.1 Termination cable/pigtails

- A Loose tube cable
- B Distribution cable
- C 900 micron pigtails

3.1 Direct termination

- D Breakout cable
- E MPO cable

1 Introduction

This instruction provides information for the installation and routing of the fibers in the 1HU AMP Fiber Optic Patch Panel. Read this instruction before starting assembly.

The patch panels are to be mounted into 19" racks with front mounting styles. The panel is equipped with a sliding drawer for easy access.

2 General

2.1 Kit content

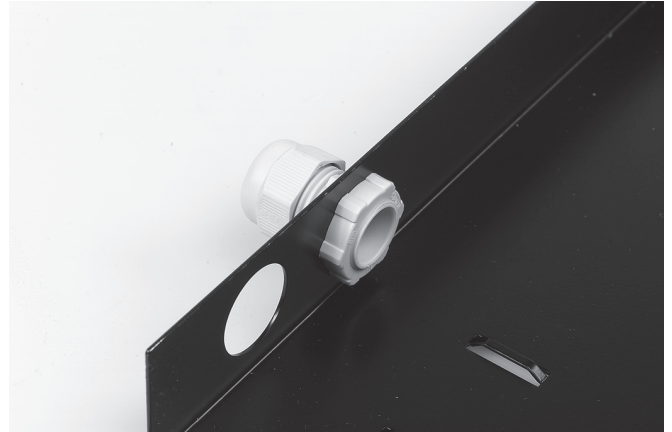


- Patch panel
- 2 cable management spiders
- 1 gland M20; clamping range min. 6 mm, max. 12 mm
- 1 gland M 25; clamping range min. 11 mm, max. 17 mm

2.2 Required tools

- Cable stripper and cutters

3 Installation



3.1 Install the gland at the back of the shelf.



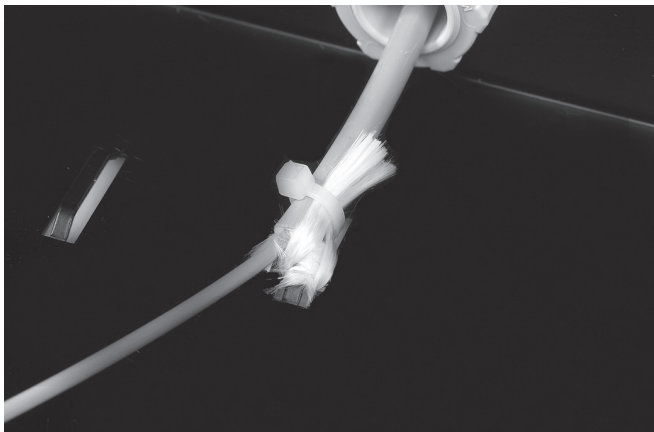
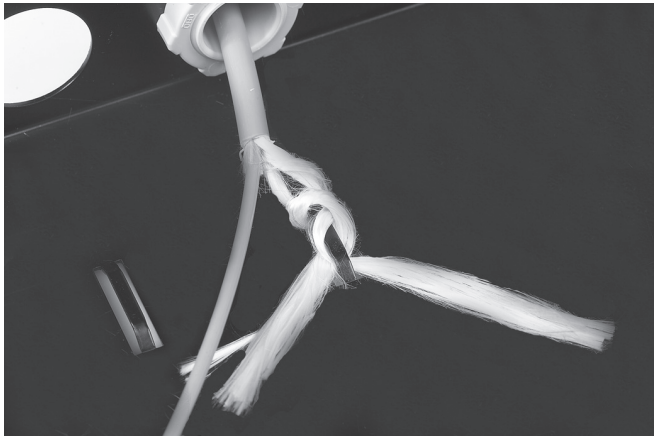
3.2 Push the cable through the gland inside the shelf. Cable entry is provided at both sides on the back of the panel

Note: Always wear eye protection when working with optical fibers. Never look into the end of terminated or unterminated fibers. Laser radiation is invisible but can damage eye tissue. Never eat, drink, or smoke when working with fibers. This could lead to ingestion of glass particles..

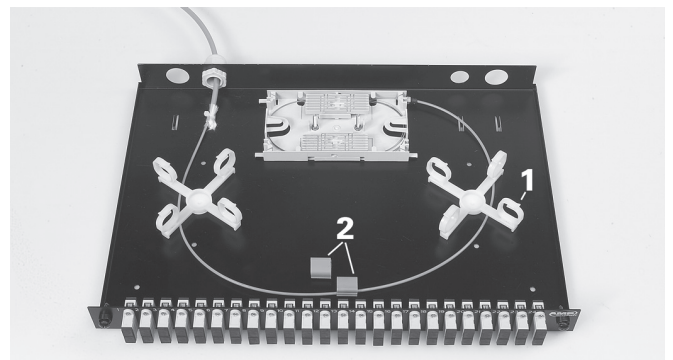
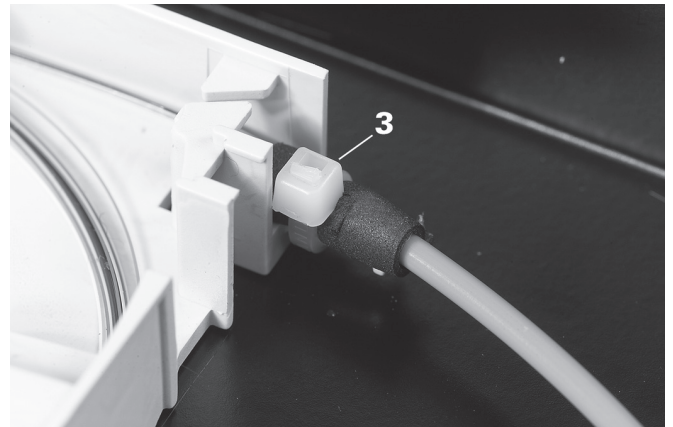
3.1 Termination cable/pigtails

A Loose tube cable

Strip the cable over a length of 1.5 - 2 m.



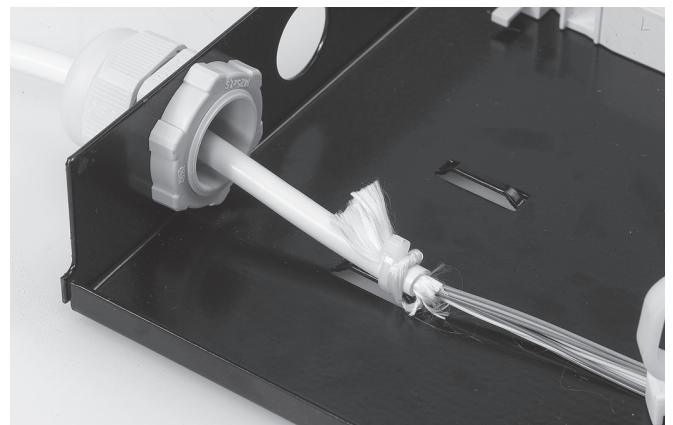
3.3 Secure the cable with the tie-wrap and when Kevlar is present, it must be terminated using the lip at the bottom of the shelf.



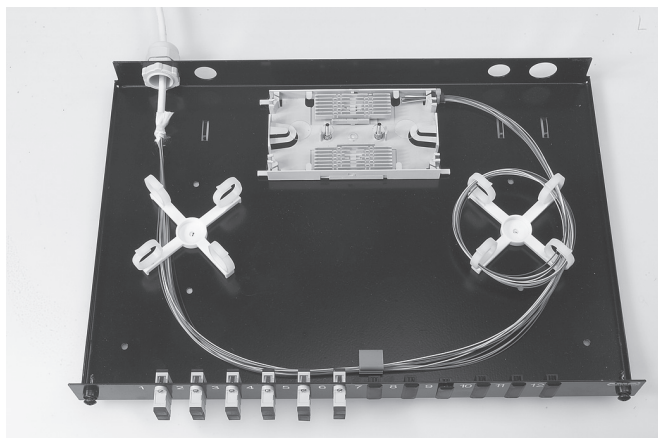
3.4 Bring the loose tubes to the cassettes underneath the spiders (1) and click it in the clips (2). Use foam and tie-wrap to tighten the tube to the cassettes (3).

B IFC

Strip the cable over a length of 1.2 m.

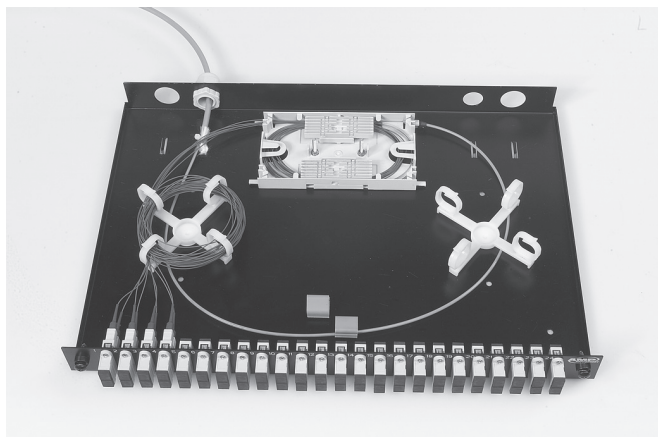


3.5 Secure the cable with the tie-wrap and when Kevlar is present, it must be terminated using the lip at the bottom of the shelf.

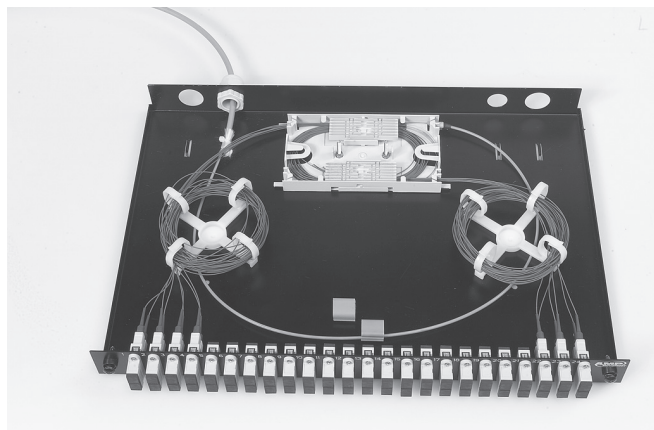


3.6 Routing the fibers to the cassette. No storage inside the cassette. Storage can be done in the spider.

C 900 micron pigtailed



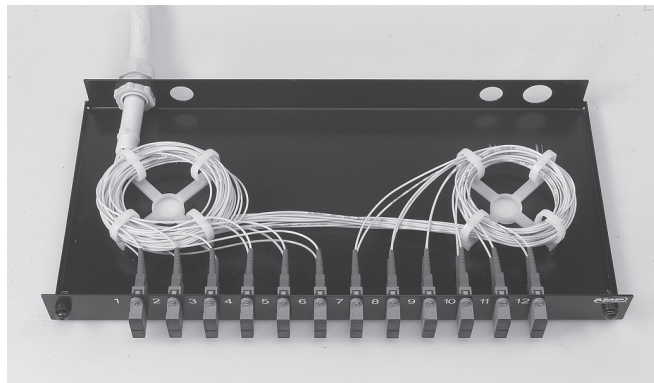
3.7 Make the connection, route the fibers to the spider system for storage and then enter the cassette at the opposite side where the fibers of the cable are entering.



3.8 Using two spiders.

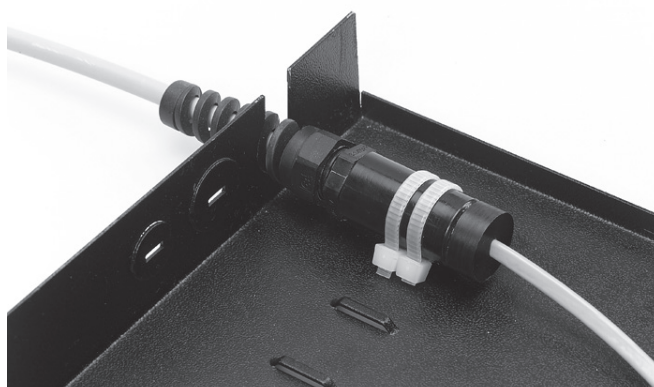
3.2 Direct termination

D Break out cable



3.10 Secure the cable with tie-wrap. Storage of the overlength divided into/over two groups/spiders.

C MPO cable



3.11 Secure the cable with 2 tie-wraps. Storage of the overlength in the shelf. No spiders required.

