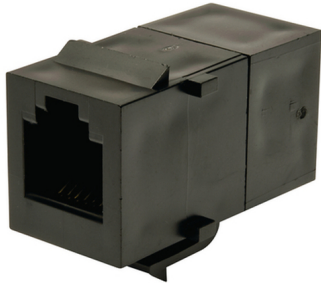


# 555050-1



RJ11 Coupler Assembly, category 3, 6-position, in-line, black

## OBSOLETE

This product was discontinued on: August 31, 2022

## Product Classification

<b>Regional Availability</b>	Asia   Latin America   North America
<b>Portfolio</b>	CommScope®
<b>Product Type</b>	Modular jack coupler

## General Specifications

<b>ANSI/TIA Category</b>	3
<b>Cable Type</b>	Unshielded
<b>Color</b>	Black
<b>Conductor Type</b>	Solid   Stranded
<b>Integrated Dust Cover Type</b>	None
<b>Outlet Type</b>	Inline
<b>Termination Type</b>	IDC
<b>Transmission Standards</b>	ANSI/TIA-568-C.2   ISO/IEC 11801 Class C
<b>Wiring</b>	T568A   T568B

## Dimensions

<b>Panel Cutout, recommended</b>	14.86 x 19.30 mm (0.59 x 0.76 in)
<b>Panel Thickness, recommended</b>	1.6 mm   0.063 in
<b>Height</b>	19.05 mm   0.75 in
<b>Width</b>	14.48 mm   0.57 in
<b>Depth</b>	30.73 mm   1.21 in
<b>Contact Plating Thickness</b>	1.27 µm

# 555050-1

---

## Electrical Specifications

**PoE Durability** Supports IEEE 802.3bt Type 4 (90 W) applications after 3000 plug to jack mating cycles

## Material Specifications

**Contact Base Material** Phosphor Bronze

**Contact Plating Material** Gold

**Material Type** Polycarbonate

## Mechanical Specifications

**Plug to Jack Mating Cycles** Complies to IEC 60603-7 series

## Environmental Specifications

**Flammability Rating** UL 94 V-0

## Packaging and Weights

**Packaging quantity** 1

## Regulatory Compliance/Certifications

<b>Agency</b>	<b>Classification</b>
CHINA-ROHS	Below maximum concentration value
REACH-SVHC	Compliant as per SVHC revision on <a href="https://www.commscope.com/ProductCompliance">www.commscope.com/ProductCompliance</a>
ROHS	Compliant
UK-ROHS	Compliant

