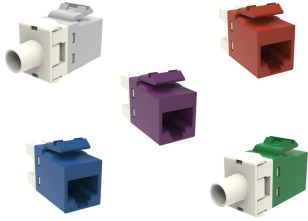


Base Product



SL-Series Modular Jack, RJ45, Cat5e Unshielded

Product Classification

Regional Availability

Asia | Australia/New Zealand | EMEA | Latin America | North America

Portfolio

CommScope®

Product Type

Modular jack

Product Series

SL Series

General Specifications

ANSI/TIA Category

5e

Cable Type

Unshielded

Conductor Type

Solid | Stranded

Mounting

SL Series faceplates and panels

Outlet Type

Standard

Termination Punchdowns, minimum

200 times

Termination Tool

SL Termination tool

Termination Type

IDC

Transmission Standards

ANSI/TIA-568-C.2 | ISO/IEC 11801 Class D

Wiring

T568A | T568B

Dimensions

Panel Cutout, recommended

14.78 x 20.07 mm (0.58 x 0.79 in)

Panel Thickness, recommended

1.6 mm | 0.063 in

Height

16.26 mm | 0.64 in

Width

14.48 mm | 0.57 in

Depth

30.48 mm | 1.2 in

Compatible Insulated Conductor Diameter, maximum

1.45 mm | 0.057 in

Contact Plating Thickness

1.27 µm

Compatible Conductor Gauge, solid 24–22 AWG

Compatible Conductor Gauge, stranded 26–24 AWG

Electrical Specifications

Remote Powering Fully supports the safe delivery of power over LAN cabling described by IEEE 802.3bt (Type 4) and complies with the unmating under electrical load requirements prescribed by IEC 60512-99-002

PoE Durability Supports IEEE 802.3bt Type 4 (90 W) applications after 3000 plug to jack mating cycles

Safety Voltage Rating 150 Vac

Material Specifications

Contact Base Material Beryllium copper

Contact Plating Material Gold

Material Type Polycarbonate

Mechanical Specifications

Plug Retention Force, minimum 89 N | 20.008 lbf

Plug to Jack Mating Cycles Complies to IEC 60603-7 series

Environmental Specifications

Operating Temperature -40 °C to +70 °C (-40 °F to +158 °F)

Flammability Rating UL 94 V-0

Safety Standard CSA | cUL