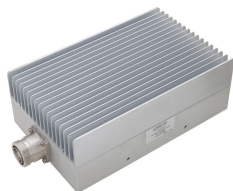


T-100-DFI6

Low PIM Termination 100 W Load, 555-2700MHz



OBSOLETE

This product was discontinued on: July 31, 2021

Replaced By:

T-100-UW-43-F-I6

Low PIM Termination 100 W Load, 0-6000MHz

Product Classification

Regional Availability

Asia | Australia/New Zealand | EMEA | Latin America | North America

Product Type

Termination Load

General Specifications

Device Type

Termination Load

Application

Indoor/Outdoor

Color

Silver

Inner Contact Plating

Silver

Interface

7-16 DIN Female

Outer Contact Plating

Trimetal

Dimensions

Height

75 mm | 2.953 in

Width

130 mm | 5.118 in

Length

240 mm | 9.449 in

Electrical Specifications

3rd Order IMD

-160 dBc

3rd Order IMD Test Method

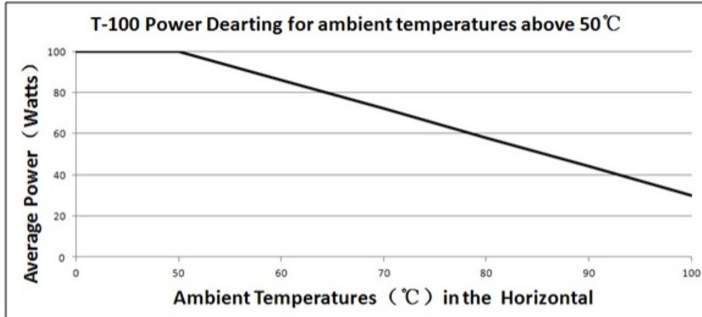
Two +43 dBm carriers

T-100-DFI6

Return Loss, minimum	19 dB
Average Power, maximum	100 W
Impedance	50 ohm
Operating Frequency Band	555 – 2700 MHz
VSWR	1.25

T-100-DFI6

Derating Curve



Environmental Specifications

Operating Temperature	-25 °C to +50 °C (-13 °F to +122 °F)
Relative Humidity	Up to 100%
Ingress Protection Test Method	IEC 60529:2001, IP65

Packaging and Weights

Height, packed	105 mm 4.134 in
Width, packed	135 mm 5.315 in
Length, packed	270 mm 10.63 in
Weight, gross	2.73 kg 6.019 lb
Weight, net	2.54 kg 5.6 lb

Regulatory Compliance/Certifications

Agency	Classification
CHINA-ROHS	Below maximum concentration value
ROHS	Compliant
UK-ROHS	Compliant

