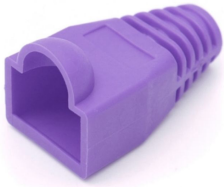


Modular Plug Boot, 8W, 2400-pack, 6 mm max. diameter, violet



## OBSOLETE

This product was discontinued on: July 1, 2017

### Replaced By:

2843032-3  
MP-Boot-S/SL-AB

Modular Plug Shielded Slim-Line Boot for Category 6A/6 and Category 5e EMT Plugs, 4.7 to 6.0 mm, transparent

## Product Classification

<b>Regional Availability</b>	Asia   Australia/New Zealand   EMEA   Latin America   North America
<b>Portfolio</b>	NETCONNECT®
<b>Product Type</b>	Modular plug boot

## General Specifications

<b>Boot Feature</b>	Snagless
<b>Color</b>	Violet
<b>Compatible Plug Type</b>	Cat 5e   Cat 6   Cat 6A

## Dimensions

<b>Compatible Cable Diameter, maximum</b>	6 mm   0.236 in
<b>Compatible Cable Diameter, minimum</b>	5.3 mm   0.209 in

## Packaging and Weights

<b>Packaging quantity</b>	2400
<b>Packaging Type</b>	Bag   Box

## Regulatory Compliance/Certifications

# 5-737893-9

---

**Agency**

CHINA-ROHS  
REACH-SVHC  
ROHS

**Classification**

Below maximum concentration value  
Compliant as per SVHC revision on [www.commscope.com/ProductCompliance](http://www.commscope.com/ProductCompliance)  
Compliant

