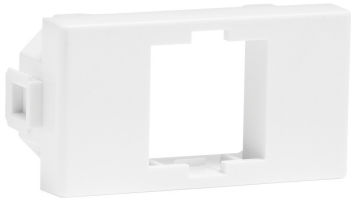


760157701 | FLAT Italian Insert



FLAT Italian Insert, 1 port, white

Product Classification

Regional Availability	Asia Australia/New Zealand EMEA Latin America North America
Portfolio	CommScope®
Product Type	Insert kit
Ordering Note	Available in Italy

General Specifications

Application	The clips accept one high density module
Color	White
Mounting	Flush
Total Ports, quantity	1

Dimensions

Height	47.24 mm 1.86 in
Width	23.62 mm 0.93 in
Depth	14.48 mm 0.57 in

Material Specifications

Material Type	High-impact, flame retardant, thermoplastic
----------------------	---

Environmental Specifications

Flammability Rating	UL 94 V-0
----------------------------	-----------

Packaging and Weights

Packaging quantity	1
Weight, net	0.005 kg 0.01 lb

Regulatory Compliance/Certifications

Agency	Classification
---------------	-----------------------

760157701 | FLAT Italian Insert

CHINA-ROHS	Below maximum concentration value
ISO 9001:2015	Designed, manufactured and/or distributed under this quality management system
REACH-SVHC	Compliant as per SVHC revision on www.commscope.com/ProductCompliance
ROHS	Compliant
UK-ROHS	Compliant

