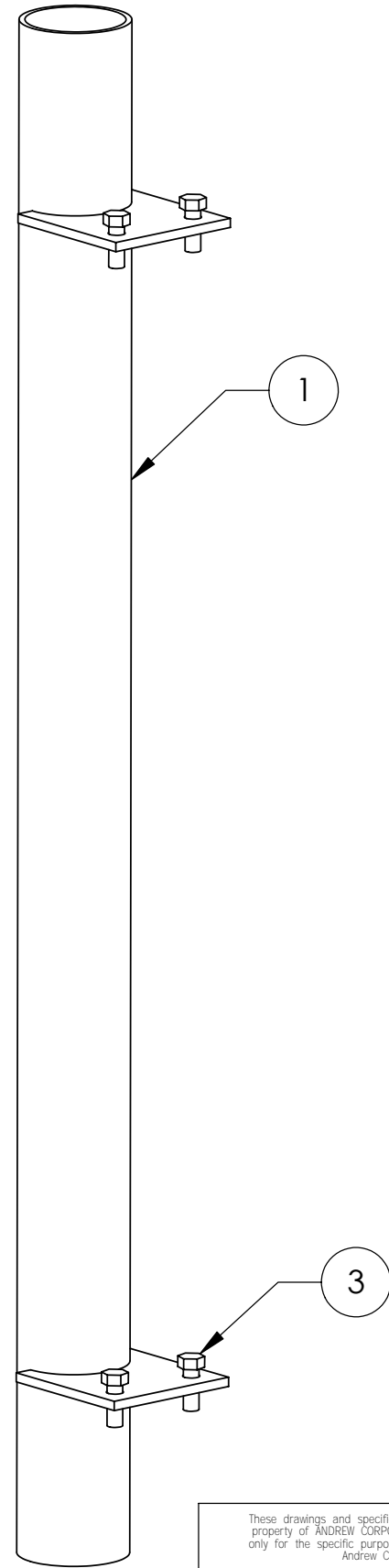


ITEM	PART NO.	DESCRIPTION	QTY.	WEIGHT
1	MT395.01	4-1/2" OD x 63" PIPE MOUNT	1	61.67 LBS
2	MT395H	HARDWARE KIT CONTAINS FOLLOWING ITEM	1	
3	GB-0516A	5/8" X 1-3/4" GALV BOLT KIT A325	4	0.25 LBS

REVISIONS				
REV.	ZONE	DESCRIPTION	BY	DATE
F		REVISED	DI	1/25/05
G		CHANGED BOLT CALL OUT	AW	9/08/05



These drawings and specifications are the proprietary property of ANDREW CORPORATION and may be used only for the specific purpose authorized in writing by Andrew Corporation. ALL DIMENSIONS ARE IN INCHES U.O.S. TOLERANCES UNLESS OTHERWISE SPECIFIED: .X = ± .06 ANGLES ±2° .XX = ± .03 FRACTIONS ±1/32 .XXX = ± .010 REMOVE BURRS AND BREAK EDGES .005 DO NOT SCALE THIS PRINT	DRAWN BY:	DI	SHEET:	1 of 1	PART NUMBER:	MT-395
	CHECKED BY:	TP	SCALE:	NTS	DESCRIPTION:	PIPE MOUNT
	DATE:	1/25/05	MATERIAL:	A36, A53	DRAWING TYPE:	ASSEMBLY DRAWING
	REVISION:	G	FINISH:	GALV A123	WEIGHT:	62.65 LBS