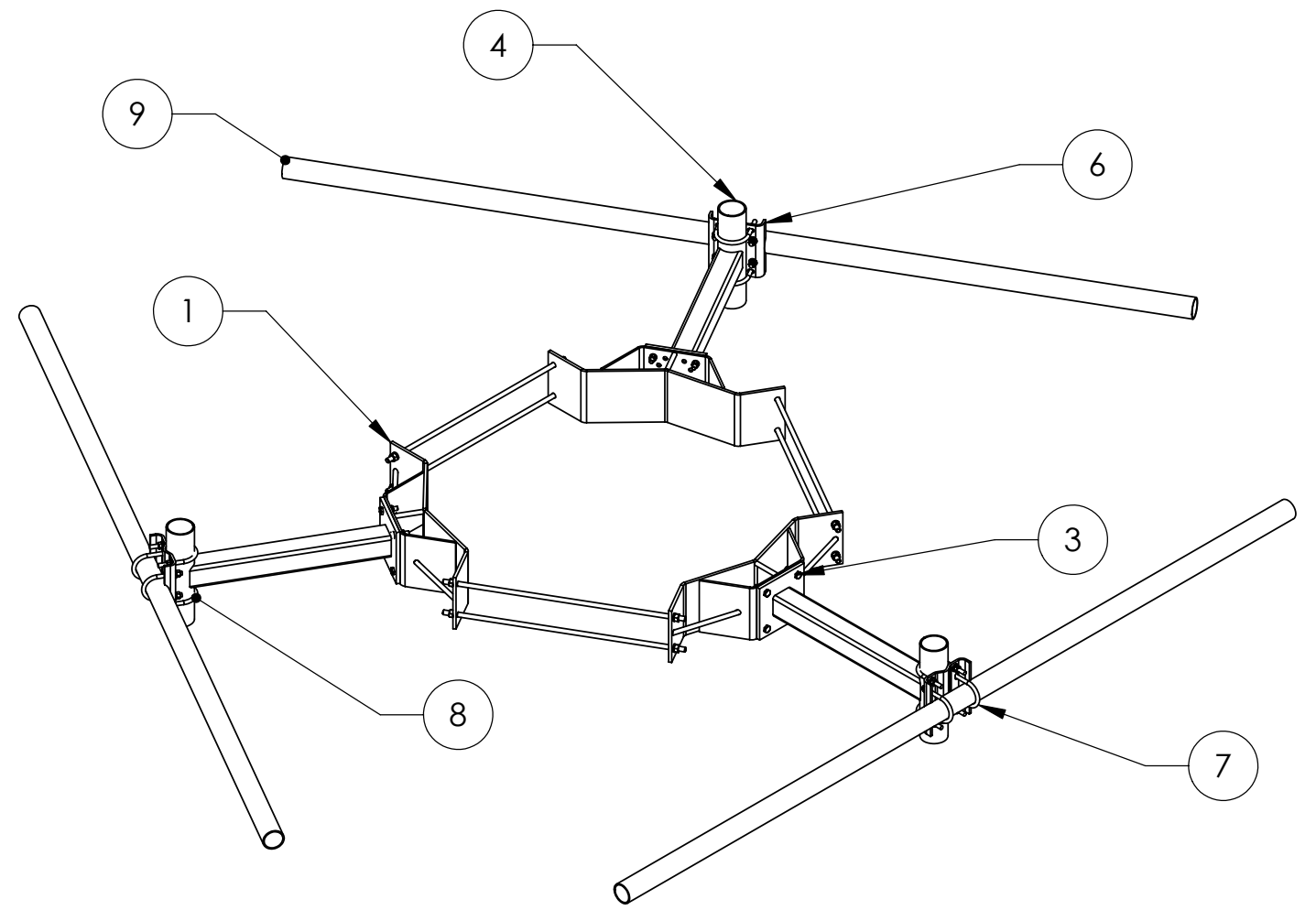



ITEM	PART NO.	DESCRIPTION	QTY.	WEIGHT
1	MC-RM3060-3	Ø 30" - Ø 60" UNIVERSAL RING MOUNT	1	308.96 LBS
2	MT197H	HARDWARE KIT (ITEM 3)	3	
3	GB-0524A	5/8" X 2-1/2" GALV. BOLT KIT (A325)	12	0.34 LBS
4	MT197.01	36" SINGLE SUPPORT ARM	3	65.98 LBS
5	MT216NSH	HARDWARE KIT (ITEMS 6-8)	3	
6	MT216.13	CENTER BRACKET	3	11.80 LBS
7	GUB-53560	5/8" X 3-5/8" X 6" GALV U-BOLT	6	0.72 LBS
8	GUB-5456	5/8" X 4-5/8" X 6-1/2" GALV U-BOLT	6	0.72 LBS
9	MT216.01	3 1/2" O.D. X 12'-6" GALV. PIPE	3	94.20 LBS

REVISIONS				
REV.	ZONE	DESCRIPTION	BY	DATE
A		INITIAL RELEASE	ACG	02/19/03
B		UPDATE PART LIST	ACG	03/21/03
C		UPDATE PART LIST	ACG	03/08/05
D		UPDATE MT216NSH	ACG	12/06/05
E		REDESIGN ITEM #6	MSM	06/06/08

PART LIST FOR USE WITH T-FRAME MC-K12L-B

T-FRAME #	PIPE #	DESCRIPTION	QTY	T-FRAME WEIGHT
MC-K12L-B	-	-	0	851.5 LBS
MC-K12L-6-72	MT-651	2-3/8" O.D. X 72" GALV PIPE	6	1049.1 LBS
MC-K12L-6-96	MT-651-96	2-3/8" O.D. X 96" GALV PIPE	6	1093.1 LBS
MC-K12L-9-72	MT-651	2-3/8" O.D. X 72" GALV PIPE	9	1147.9 LBS
MC-K12L-9-96	MT-651-96	2-3/8" O.D. X 96" GALV PIPE	9	1213.8LBS
MC-K12L-12-72	MT-651	2-3/8" O.D. X 72" GALV PIPE	12	1246.6 LBS
MC-K12L-12-96	MT-651-96	2-3/8" O.D. X 96" GALV PIPE	12	1334.6 LBS

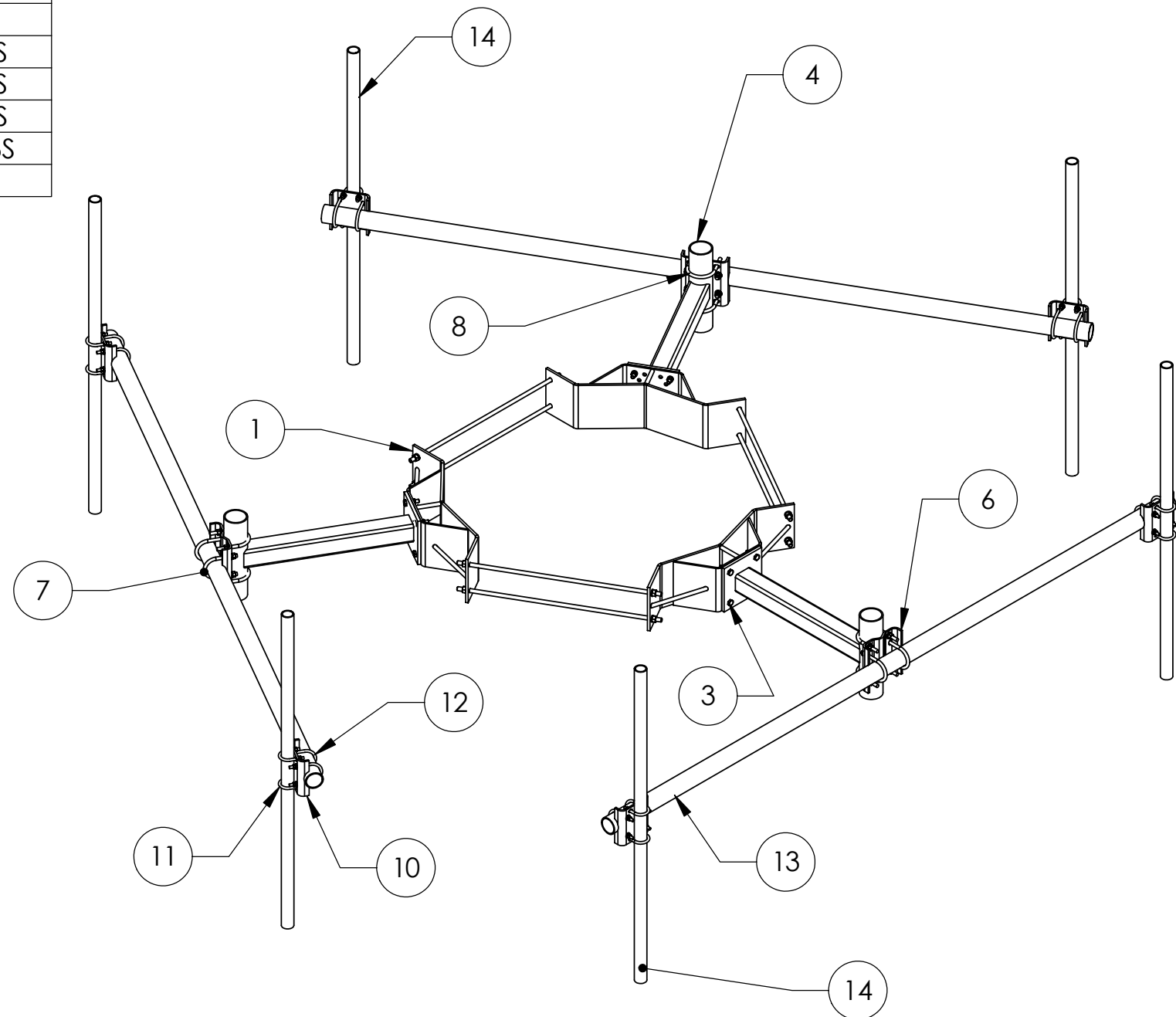



<small>These drawings and specifications are the proprietary property of ANDREW CORPORATION and may be used only for the specific purpose authorized in writing by Andrew Corporation.</small> ALL DIMENSIONS ARE IN INCHES U.O.S. TOLERANCES UNLESS OTHERWISE SPECIFIED: .X = .12 ANGLES 2' .XX = .06 FRACTIONS 1/32 .XXX = .03 REMOVE BURRS AND BREAK EDGES .005 DO NOT SCALE THIS PRINT	DRAWN BY: ACG	SHEET: 1 of 4	PART NUMBER: MC-K12L-B SERIES
	CHECKED BY: TP	SCALE: NTS	DESCRIPTION: 30"-60" DIA. MONOPOLE T-FRAME
	DATE: 03/02/05	MATERIAL: A36, A500, A53	DRAWING TYPE: ASSEMBLY DRAWING
	REVISION: E	FINISH: GALV A123	 ORLAND PARK, IL. 60462 U.S.A.
	WEIGHT: SEE TABLE		

ITEM	PART NO.	DESCRIPTION	QTY.	WEIGHT
1	MC-RM3060-3	Ø 30" - Ø 60" UNIVERSAL RING MOUNT	1	308.96 LBS
2	MT197H	HARDWARE KIT (ITEM 3)	3	
3	GB-0524A	5/8" X 2-1/2" GALV. BOLT KIT (A325)	12	0.34 LBS
4	MT197.01	36" SINGLE SUPPORT ARM	3	65.98 LBS
5	MT216NSH	HARDWARE KIT (ITEMS 6-8)	3	
6	MT216.13	CENTER BRACKET	3	11.80 LBS
7	GUB-53560	5/8" X 3-5/8" X 6" GALV U-BOLT	6	0.72 LBS
8	GUB-5456	5/8" X 4-5/8" X 6-1/2" GALV U-BOLT	6	0.72 LBS
9	MT-219-H	HARDWARE KIT (Next 3 Items)	6	
10	MT217.01	PIPE MOUNT PLATE	6	7.53 LBS
11	GUB-4240	1/2" X 2-1/2" X 4" GALV U-BOLT KIT	12	0.57 LBS
12	GUB-4356	1/2" X 3-5/8" X 6" GALV U-BOLT KIT	12	0.83 LBS
13	MT216.01	3 1/2" O.D. X 12'-6" GALV. PIPE	3	94.20 LBS
14	MT-XXXX	2-3/8" O.D. PIPE (SEE TABLE)	6	-

PART LIST FOR USE WITH T-FRAME MC-K12L-6 SERIES

T-FRAME #	PIPE #	DESCRIPTION	QTY	T-FRAME WEIGHT
MC-K12L-B	-	-	0	851.5 LBS
MC-K12L-6-72	MT-651	2-3/8" O.D. X 72" GALV PIPE	6	1049.1 LBS
MC-K12L-6-96	MT-651-96	2-3/8" O.D. X 96" GALV PIPE	6	1093.1 LBS
MC-K12L-9-72	MT-651	2-3/8" O.D. X 72" GALV PIPE	9	1147.9 LBS
MC-K12L-9-96	MT-651-96	2-3/8" O.D. X 96" GALV PIPE	9	1213.8LBS
MC-K12L-12-72	MT-651	2-3/8" O.D. X 72" GALV PIPE	12	1246.6 LBS
MC-K12L-12-96	MT-651-96	2-3/8" O.D. X 96" GALV PIPE	12	1334.6 LBS

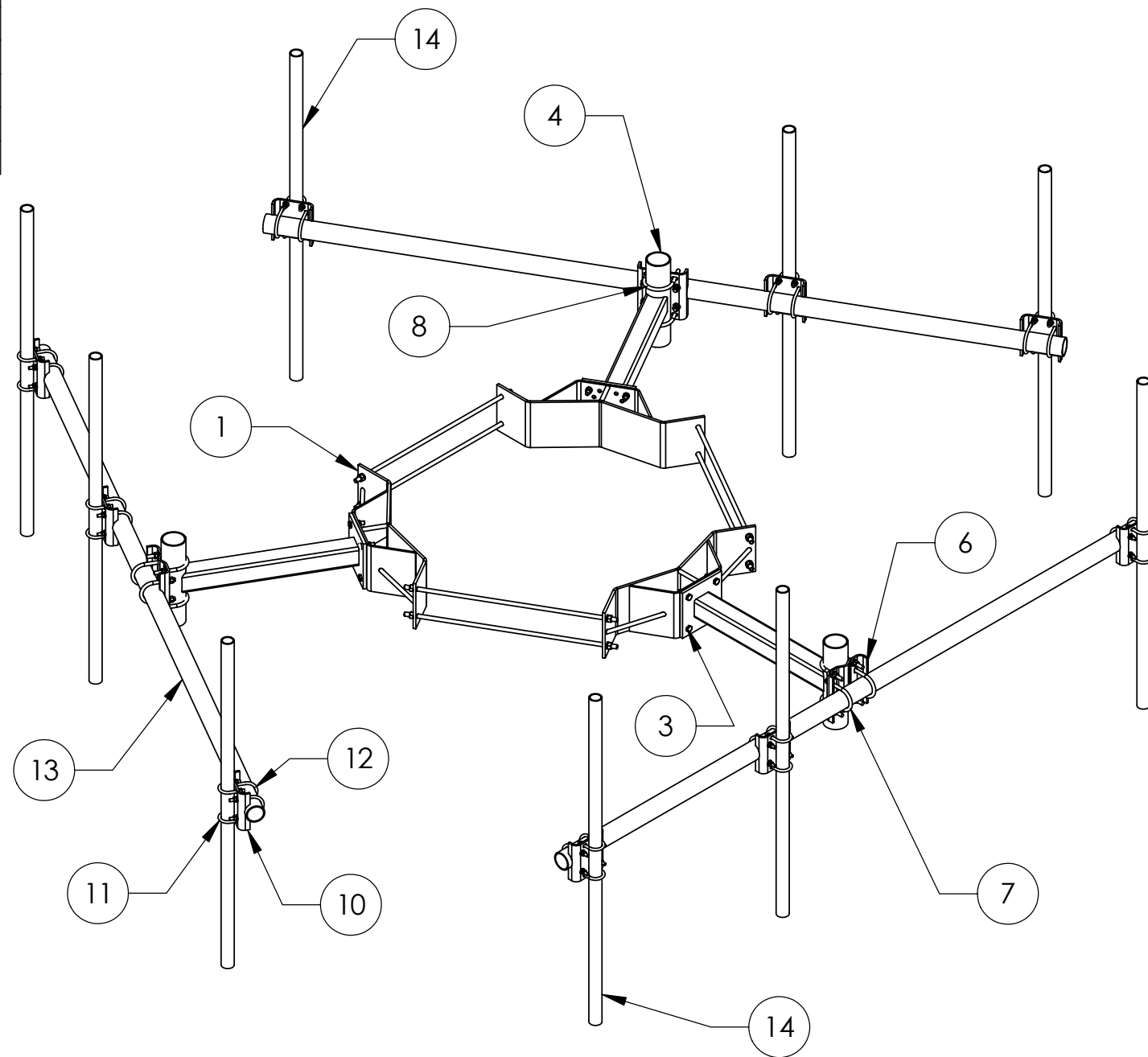



These drawings and specifications are the proprietary property of ANDREW CORPORATION and may be used only for the specific purpose authorized in writing by Andrew Corporation. ALL DIMENSIONS ARE IN INCHES U.O.S. TOLERANCES UNLESS OTHERWISE SPECIFIED: .X = .12 ANGLES 2' .XX = .06 FRACTIONS 1/32 .XXX = .03 REMOVE BURRS AND BREAK EDGES .005 DO NOT SCALE THIS PRINT	DRAWN BY: ACG	SHEET: 2 of 4	PART NUMBER: MC-K12L-6 SERIES	
	CHECKED BY: TP	SCALE: NTS	DESCRIPTION: 30"-60" DIA. MONOPOLE T-FRAME	
	DATE: 03/02/05	MATERIAL: A36, A500, A53	DRAWING TYPE: ASSEMBLY DRAWING	
	REVISION: E	FINISH: GALV A123	 ORLAND PARK, IL. 60462 U.S.A.	
	WEIGHT: SEE TABLE			

ITEM	PART NO.	DESCRIPTION	QTY.	WEIGHT
1	MC-RM3060-3	Ø 30" - Ø 60" UNIVERSAL RING MOUNT	1	308.96 LBS
2	MT197H	HARDWARE KIT (ITEM 3)	3	
3	GB-0524A	5/8" X 2-1/2" GALV. BOLT KIT (A325)	12	0.34 LBS
4	MT197.01	36" SINGLE SUPPORT ARM	3	65.98 LBS
5	MT216NSH	HARDWARE KIT (ITEMS 6-8)	3	
6	MT216.13	CENTER BRACKET	3	11.80 LBS
7	GUB-53560	5/8" X 3-5/8" X 6" GALV U-BOLT	6	0.72 LBS
8	GUB-5456	5/8" X 4-5/8" X 6-1/2" GALV U-BOLT	6	0.72 LBS
9	MT-219-H	HARDWARE KIT (Items 10-12)	9	
10	MT217.01	PIPE MOUNT PLATE	9	7.53 LBS
11	GUB-4240	1/2" X 2-1/2" X 4" GALV U-BOLT KIT	18	0.57 LBS
12	GUB-4356	1/2" X 3-5/8" X 6" GALV U-BOLT KIT	18	0.83 LBS
13	MT216.01	3 1/2" O.D. X 12'-6" GALV. PIPE	3	94.20 LBS
14	MT-XXXX	2-3/8" O.D. PIPE (SEE TABLE)	9	-

PART LIST FOR USE WITH T-FRAME MC-K12L-9 SERIES

T-FRAME #	PIPE #	DESCRIPTION	QTY	T-FRAME WEIGHT
MC-K12L-B	-	-	0	851.5 LBS
MC-K12L-6-72	MT-651	2-3/8" O.D. X 72" GALV PIPE	6	1049.1 LBS
MC-K12L-6-96	MT-651-96	2-3/8" O.D. X 96" GALV PIPE	6	1093.1 LBS
MC-K12L-9-72	MT-651	2-3/8" O.D. X 72" GALV PIPE	9	1147.9 LBS
MC-K12L-9-96	MT-651-96	2-3/8" O.D. X 96" GALV PIPE	9	1213.8LBS
MC-K12L-12-72	MT-651	2-3/8" O.D. X 72" GALV PIPE	12	1246.6 LBS
MC-K12L-12-96	MT-651-96	2-3/8" O.D. X 96" GALV PIPE	12	1334.6 LBS

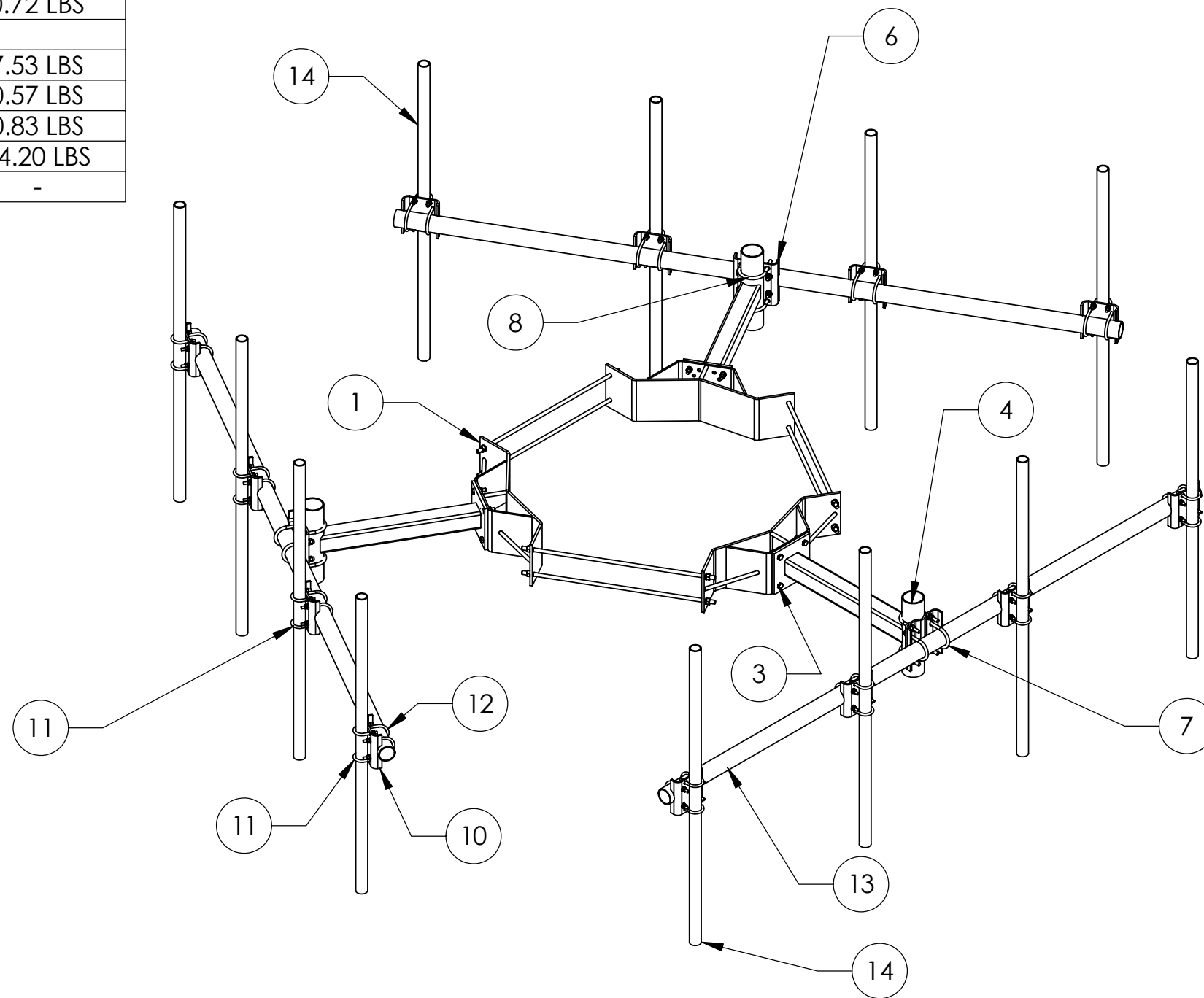



<small>These drawings and specifications are the proprietary property of ANDREW CORPORATION and may be used only for the specific purpose authorized in writing by Andrew Corporation.</small> ALL DIMENSIONS ARE IN INCHES U.O.S. TOLERANCES UNLESS OTHERWISE SPECIFIED: .X = .12 ANGLES 2' .XX = .06 FRACTIONS 1/32 .XXX = .03 REMOVE BURRS AND BREAK EDGES .005 DO NOT SCALE THIS PRINT	DRAWN BY: ACG	SHEET: 3 of 4	PART NUMBER: MC-K12L-9 SERIES
	CHECKED BY: TP	SCALE: NTS	DESCRIPTION: 30"-60" DIA. MONOPOLE T-FRAME
	DATE: 03/02/05	MATERIAL: A36, A500, A53	DRAWING TYPE: ASSEMBLY DRAWING
	REVISION: E	FINISH: GALV A123	 ORLAND PARK, IL. 60462 U.S.A.
	WEIGHT: SEE TABLE		

ITEM	PART NO.	DESCRIPTION	QTY.	WEIGHT
1	MC-RM3060-3	Ø 30" - Ø 60" UNIVERSAL RING MOUNT	1	308.96 LBS
2	MT197H	HARDWARE KIT (ITEM 3)	3	
3	GB-0524A	5/8" X 2-1/2" GALV. BOLT KIT (A325)	12	0.34 LBS
4	MT197.01	36" SINGLE SUPPORT ARM	3	65.98 LBS
5	MT216NSH	HARDWARE KIT (ITEMS 6-8)	3	
6	MT216.13	CENTER BRACKET	3	11.80 LBS
7	GUB-53560	5/8" X 3-5/8" X 6" GALV U-BOLT	6	0.72 LBS
8	GUB-5456	5/8" X 4-5/8" X 6-1/2" GALV U-BOLT	6	0.72 LBS
9	MT-219-H	HARDWARE KIT (Next 3 Items)	12	
10	MT217.01	PIPE MOUNT PLATE	12	7.53 LBS
11	GUB-4240	1/2" X 2-1/2" X 4" GALV U-BOLT KIT	24	0.57 LBS
12	GUB-4356	1/2" X 3-5/8" X 6" GALV U-BOLT KIT	24	0.83 LBS
13	MT216.01	3 1/2" O.D. X 12'-6" GALV. PIPE	3	94.20 LBS
14	MT-XXXX	2-3/8" O.D. PIPE (SEE TABLE)	12	-

PART LIST FOR USE WITH T-FRAME MC-K12S-12 SERIES

T-FRAME #	PIPE #	DESCRIPTION	QTY	T-FRAME WEIGHT
MC-K12L-B	-	-	0	851.5 LBS
MC-K12L-6-72	MT-651	2-3/8" O.D. X 72" GALV PIPE	6	1049.1 LBS
MC-K12L-6-96	MT-651-96	2-3/8" O.D. X 96" GALV PIPE	6	1093.1 LBS
MC-K12L-9-72	MT-651	2-3/8" O.D. X 72" GALV PIPE	9	1147.9 LBS
MC-K12L-9-96	MT-651-96	2-3/8" O.D. X 96" GALV PIPE	9	1213.8LBS
MC-K12L-12-72	MT-651	2-3/8" O.D. X 72" GALV PIPE	12	1246.6 LBS
MC-K12L-12-96	MT-651-96	2-3/8" O.D. X 96" GALV PIPE	12	1334.6 LBS



These drawings and specifications are the proprietary property of ANDREW CORPORATION and may be used only for the specific purpose authorized in writing by Andrew Corporation. ALL DIMENSIONS ARE IN INCHES U.O.S. TOLERANCES UNLESS OTHERWISE SPECIFIED: .X = .12 ANGLES 2' .XX = .06 FRACTIONS 1/32 .XXX = .03 REMOVE BURRS AND BREAK EDGES .005 DO NOT SCALE THIS PRINT	DRAWN BY: ACG	SHEET: 4 of 4	PART NUMBER: MC-K12L-12 SERIES
	CHECKED BY: TP	SCALE: NTS	DESCRIPTION: 30"-60" DIA. MONOPOLE T-FRAME
	DATE: 03/02/05	MATERIAL: A36, A500, A53	DRAWING TYPE: ASSEMBLY DRAWING
	REVISION: E	FINISH: GALV A123	 ORLAND PARK, IL. 60462 U.S.A.
	WEIGHT: SEE TABLE		