

8

7

6

5

4

3

2

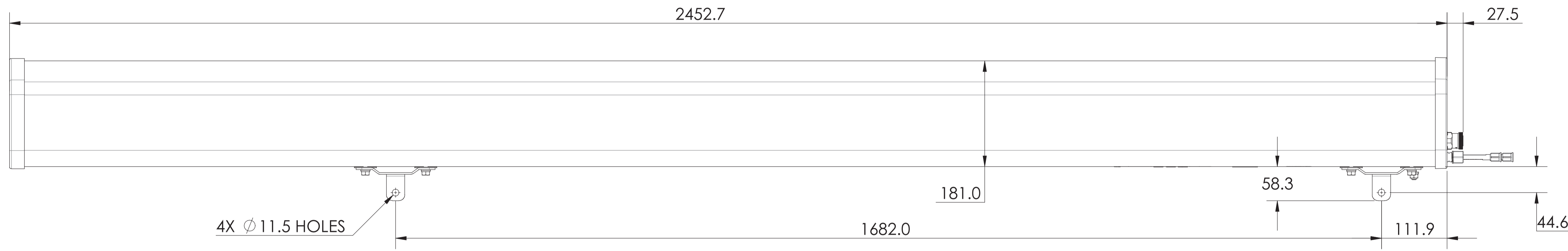
1

NOTES:

| REVISIONS | | | |
|-----------|--|-------------|------------|
| REV | DESCRIPTION | DATE | APPROVED |
| A | ECR 5110003: REL TO PRODUCTION EE: HDUN ME: LYU | 2MAR12 HQ | L.YU/HDUN |
| D | ECR 800000775: UPDATE DRAWING WITH LATEST MODEL. | 06JUN13 SJT | EB/GD |
| E | ECR 800001588: ADD SHEET4. | 23OCT13 XHX | S.LIU/JIHE |
| F | ECR 800005009: ADD DXF FILES. | 05SEP14 RY | S.LIU/JIHE |
| G | ECR 800006495: UPDATE DRAWING WITH LATEST MODEL. | 23JAN15 ZW | S.LIU/JIHE |

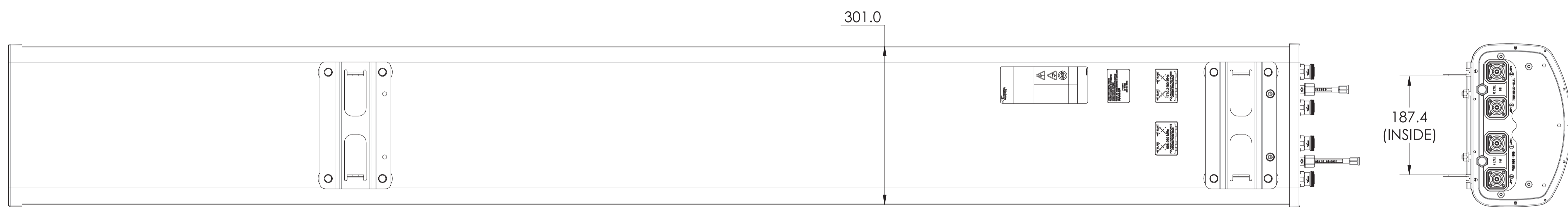
D

D



THIRD ANGLE PROJECTION

C



B

DBXRH-8585C-VTM

A

A

| | | | |
|---|---|--|-----------------------------------|
| MATERIAL N/A | DENSITY: MASS: | UNLESS OTHERWISE SPECIFIED DIMENSIONS ARE IN MILLIMETERS INTERPRET PER ISO STANDARDS HANDBOOK, TECHNICAL DRAWINGS, VOLUMES 1 & 2, THIRD EDITION (2002) | WESTCHESTER, IL. 60154 U.S.A. |
| FINISH N/A | TOLERANCES 0 PLACE X± 1 PLACE .X± 2 PLACE .XX± ANGLES ± ALL SURFACES ✓ | THIRD ANGLE PROJECTION | PRODUCT DRAWING |
| DRAWN BY HOQIAN 11JAN12 ECN 800006495-O | | SIZE A1 84147 | DOCUMENT NO. DBXRH-8585C-VTM-L |
| AUTH. GROUP 23 | | MODEL | DRAWING |
| NOTICE: These drawings and specifications are the proprietary property of ANDREW CORPORATION and may be used only for the specific purpose authorized in writing by Andrew. | | VERSION 05 | STATUS RE |
| | | REVISION F | VERSION 06 |
| | | | STATUS RE |
| | | | REVISION G |
| | | | SHEET 1 OF 4 |

8

7

6

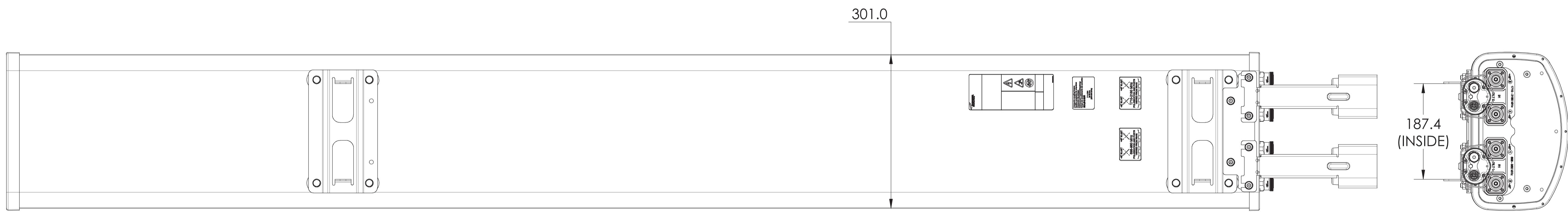
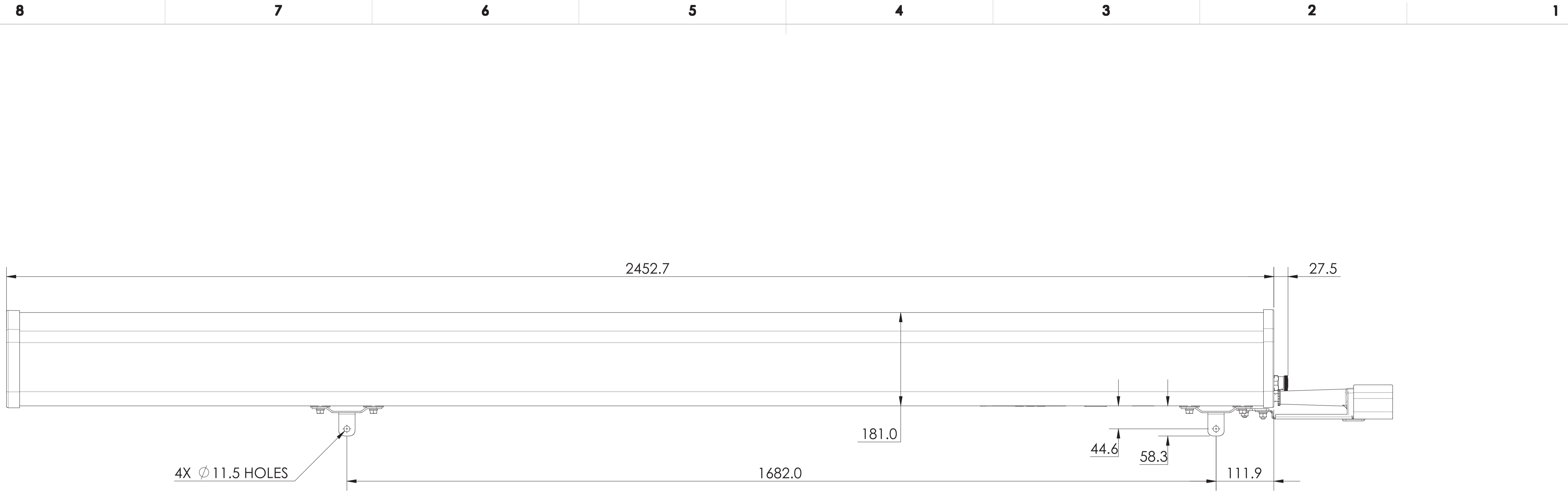
THIRD ANGLE PROJECTION

3

2

1

THIRD ANGLE PROJECTION



DBXRH-8585C-R2M
DBXRH-8585C-A2M

THIRD ANGLE PROJECTION

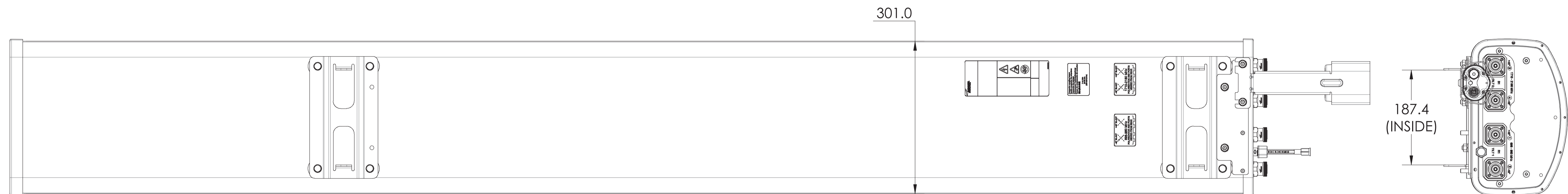
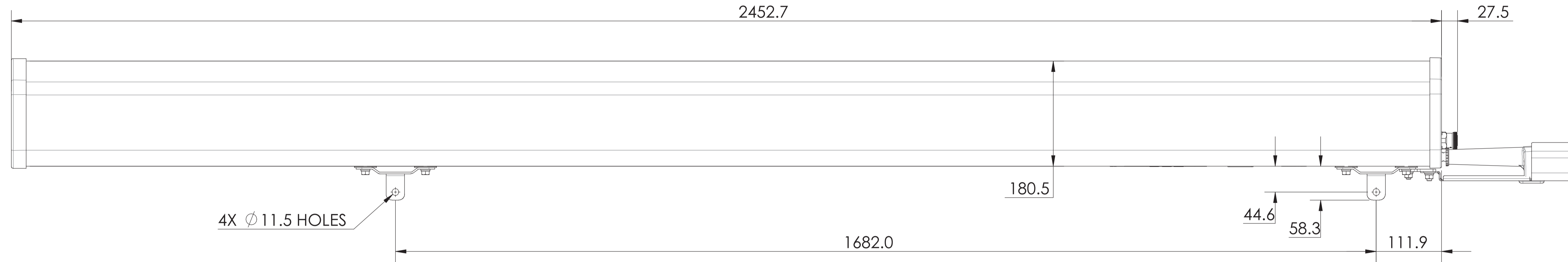
ANDREW WESTCHESTER, IL. 60154
U.S.A.

PRODUCT DRAWING

| | | | |
|---|-------------------------|---------------------------|--|
| THIRD ANGLE PROJECTION | SIZE A1 84147 | CAGE CODE 84147 | DOCUMENT NO. DBXRH-8585C-VTM-L |
| NOTICE: These drawings and specifications are the proprietary property of ANDREW CORPORATION and may be used only for the specific purpose authorized in writing by Andrew. | | VERSION 06 | STATUS RE |
| | | REVISION G | SHEET 2 OF 4 |

8 7 6 3 2 1

THIRD ANGLE PROJECTION



DBXRH-8585C-AHM

WESTCHESTER, IL. 60154
U.S.A.

PRODUCT DRAWING

| | | | |
|------------------------|-------------------------|---------------------------|--|
| THIRD ANGLE PROJECTION | SIZE A1 84147 | CAGE CODE 84147 | DOCUMENT NO. DBXRH-8585C-VTM-L |
| | VERSION 06 | STATUS RE | REVISION G |
| | SHEET 3 OF 4 | | |

NOTICE: These drawings and specifications are the proprietary property of ANDREW CORPORATION and may be used only for the specific purpose authorized in writing by Andrew.

THIRD ANGLE PROJECTION

8

7

6

5

4

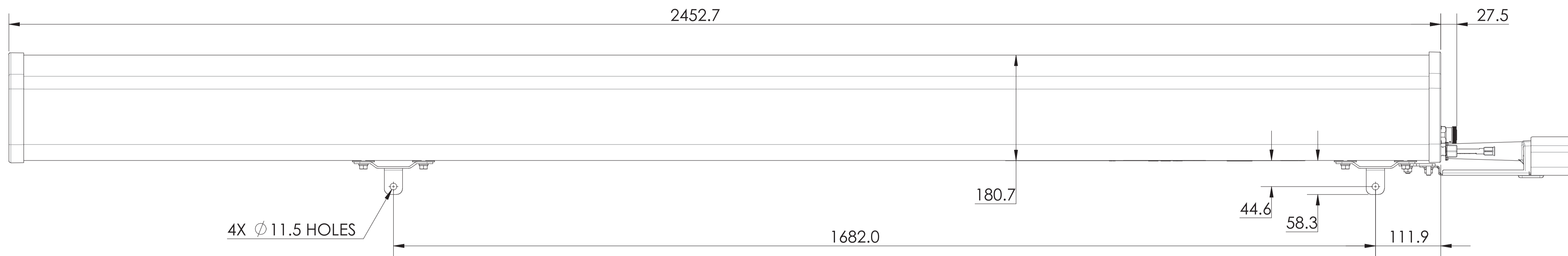
3

2

1

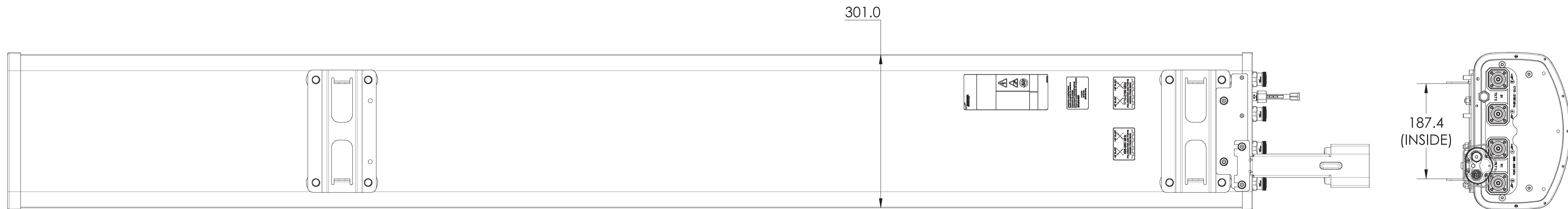
D

D



C

THIRD ANGLE PROJECTION



B

DBXRH-8585C-ELM

A

A

ANDREW WESTCHESTER, IL. 60154
U.S.A.

PRODUCT DRAWING

THIRD ANGLE PROJECTION



SIZE **A1 84147**

DOCUMENT NO. DBXRH-8585C-VTM-L

NOTICE: These drawings and specifications are the proprietary property of ANDREW CORPORATION and may be used only for the specific purpose authorized in writing by Andrew.

| | | | |
|---------|--------|----------|--------|
| VERSION | STATUS | REVISION | SHEET |
| 06 | RE | G | 4 OF 4 |

8

7

6

THIRD ANGLE PROJECTION

3

2

1