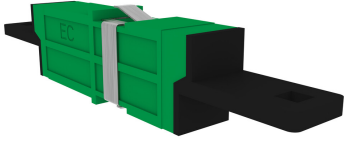


760249513



Fiber Optic Simplex Adapter, Singlemode LSH/APC, green, flangeless

- High quality zirconia ceramic split sleeves ensuring high precision alignment, reliability and improved reconnect ability

Product Classification

Regional Availability	Asia Australia/New Zealand EMEA Latin America North America
Product Type	Fiber adapter

General Specifications

Body Style	Simplex
Color	Green
Interface	LSH/APC
Mounting	Square flange
Total Ports, quantity	1
Transmission Standards	IEC 60754-1 IEC 61300-3-42

Material Specifications

Alignment Sleeve Material	Ceramic
----------------------------------	---------

Mechanical Specifications

Coupling Retention Force	70 N 15.737 lbf
---------------------------------	-------------------

Optical Specifications

Fiber Mode	Singlemode
Insertion Loss, maximum	0.2 dB

Environmental Specifications

Operating Temperature	-40 °C to +85 °C (-40 °F to +185 °F)
------------------------------	--------------------------------------

Packaging and Weights

Packaging quantity	100
Packaging Type	Bag