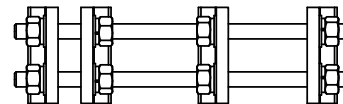
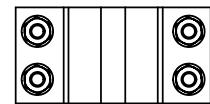
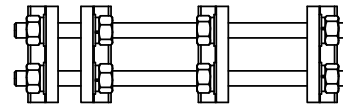
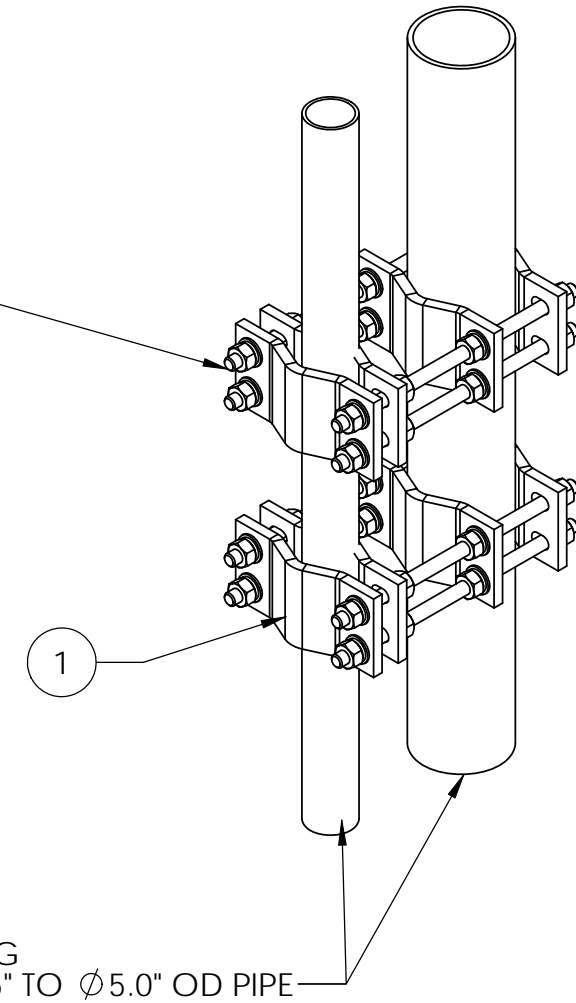
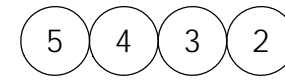
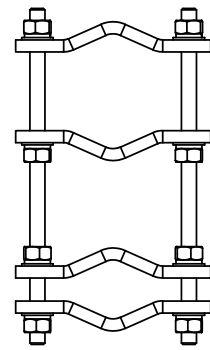


ITEM	PART NO.	DESCRIPTION	QTY.	WEIGHT
1	DC-P10D	Dual Half Clamp, 2-3/8" to 5"	8	4.42 LBS
2	MT-382-14	5/8" X 14" GALV THREADED ROD	8	1.21 LBS
3	GWF05A	5/8" GALV FLAT WASHER (A325)	32	0.03 LBS
4	GWL-05	5/8" GALV LOCK WASHER	32	0.03 LBS
5	GN05A	5/8" GALV HEX NUT (A194 2H)	32	0.12 LBS

REVISIONS				
REV.	ZONE	DESCRIPTION	BY	DATE
A		INITIAL RELEASE	MSM	06/15/12



NOTES:
 1. ALL METRIC DIMENSIONS ARE IN BRACKETS.

These drawings and specifications are the proprietary property of CommScope Inc. and may be used only for the specific purpose authorized in writing by CommScope Inc. ALL DIMENSIONS ARE IN INCHES U.O.S. TOLERANCES UNLESS OTHERWISE SPECIFIED: .X = ± .12 ANGLES ±2° .XX = ± .06 FRACTIONS ±1/32 .XXX = ± .03 REMOVE BURRS AND BREAK EDGES .005 DO NOT SCALE THIS PRINT	DRAWN BY: MSM	SHEET: 1 of 1	PART NUMBER: BC-35-14D
	CHECKED BY: TP	SCALE: NTS	DESCRIPTION: Pipe To Pipe Dual Clamp, 2-3/8" to 5"
	DATE: 06/15/12	MATERIAL: A36	DRAWING TYPE: ASSEMBLY DRAWING
	REVISION: A	FINISH: GALV A123	 Hickory, NC 28602 U.S.A.
		WEIGHT: 50.42 LBS	