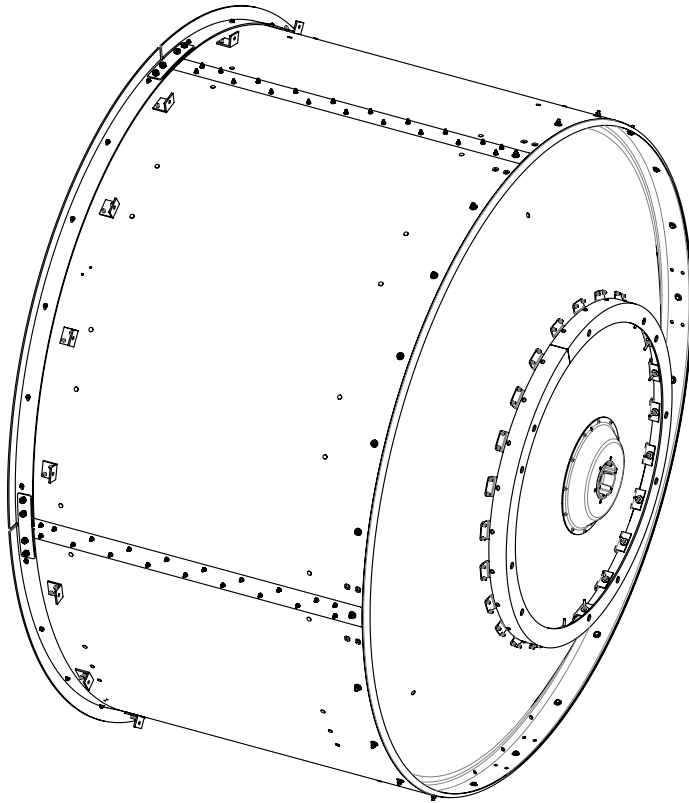


IMPORTANT!

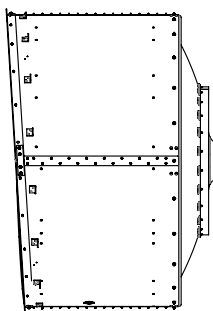
**INSTALLATION
INSTRUCTIONS**

**READ THIS
MANUAL FULLY
BEFORE STARTING
INSTALLATION**

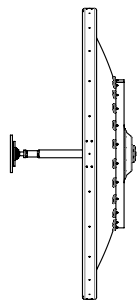
HX and USX Antennas Antenna Shield



USX8 shown for illustrative purposes only

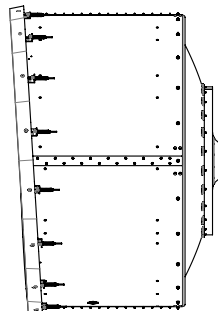


Shield

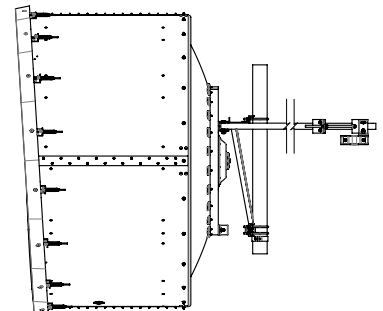


Feed

Shield omitted for clarity



Radome



Mount

Sequence of Antenna Assembly

Always read the entire manual before commencing installation

CommScope

1100 CommScope Place SE P.O. Box 339, Hickory, NC 28603-0339
(828) 324-2200 (800) 982-1708
www.commscope.com

Notice: CommScope disclaims any liability or responsibility for the results of improper or unsafe installation, inspection, maintenance, or removal practices.

Aviso: CommScope no acepta ninguna obligación ni responsabilidad como resultado de prácticas incorrectas o peligrosas de instalación, inspección, mantenimiento o retiro. Avis: CommScope décline toute responsabilité pour les conséquences de procédures d'installation, d'inspection, d'entretien ou de retrait incorrectes ou dangereuses. Hinweis: CommScope lehnt jede Haftung oder Verantwortung für Schäden ab, die aufgrund unsachgemäßer Installation, Überprüfung, Wartung oder Demontage auftreten.

Atenção: A CommScope abdica do direito de toda responsabilidade pelos resultados de práticas inadequadas e sem segurança de instalação, inspeção, manutenção ou remoção. Avvertenza: CommScope declina eventuali responsabilità derivanti dall'esecuzione di procedure di installazione, ispezione, manutenzione e smontaggio improprie o poco sicure.

注意: CommScope 公司申明對於不恰當或不安全的安裝、檢驗、維修或拆卸操作所導致的後果不負任何義務和責任
© June, 2018 CommScope

Customer Service 24 hours

North America: +1-800-255-1479 (toll free)

Any country: +1-779-435-6500

email: acicustomersupportcenter@commscope.com



LIST OF CONTENTS

<u>SECTION</u>	<u>TITLES</u>
1	INTRODUCTION
2	SAFETY INSTRUCTIONS Including Introduction, Standards, Safety Requirements, Safety Symbols, Definitions and Hazards.
3	COMPONENTS & TOOLS Including Components supplied diagram, Component quantities and descriptions. Tools required.
4	ASSEMBLY OF SHIELD
5	ASSEMBLY OF SHIELD TO REFLECTOR

SAFETY INSTRUCTIONS**NOTE:**

Reduce the risk of accidents by studying all the instructions carefully before starting working.

The safety information in this document presupposes that any person performing work on CommScope products or systems has the education, training and competence required to perform the task correctly.

SERVICE PERSONNEL

Installation and service must be carried out by authorized personnel having the appropriate technical training and experience necessary to be cognizant of hazards during installation and service, and of measures to minimize any danger to themselves or any other person.

SAFETY REQUIREMENTS & REGULATIONS

The safety requirements in the following sections must be followed to avoid personal injury and damage to tangible property.

Use local safety regulations where these are mandatory. The safety instructions in this document shall be used as a supplement to the local regulations.

In case of conflict between the safety instructions in this manual and the local safety regulations, the local safety regulations shall prevail if these are mandatory. If the local regulations are not mandatory the safety instructions in this manual shall prevail.

SAFETY SYMBOLS & DEFINITIONS**HOISTING****WARNING!**

Falling objects can cause accidents.

- Use only tested and approved hoisting equipment in accordance with the instructions supplied with the equipment. Appropriately trained personnel must operate the hoisting device.
- Always hoist from a suitable location.
- Never walk under hoisted loads.
- Follow local regulations for safety clothing and safety equipment for hoisting or moving goods.

WORKING AT HEIGHTS**WARNING!**

Some working areas involve the risk of accidents caused by falling or by falling objects

INSTALLATION HARDWARE

Do not use any installation components (for example screws and nuts) other than those enclosed with the equipment or recommended by CommScope.

INSTALLATION PROCEDURES & TOOLS

The installation procedures in this manual must be followed. Make sure that:

- Working instructions are followed.
- Recommended tools are used.
- Adequate safety devices are used.
- The risk of falling and falling objects is known.
- All hardware is tightened to the torques specified $\pm 5\%$. The integrity of the antenna depends on all fasteners being tightened correctly.

ANNUAL INSPECTION

Antenna systems should be inspected once a year by qualified personnel to verify proper installation, maintenance and condition of equipment.

Tools Required	M6	M8	M10
	Ring and Open spanner (A/F)	10mm	13mm
Torque Wrench	7.7Nm - 38Nm		
Sockets (A/F)	10mm	13mm	17mm
General Toolbox			

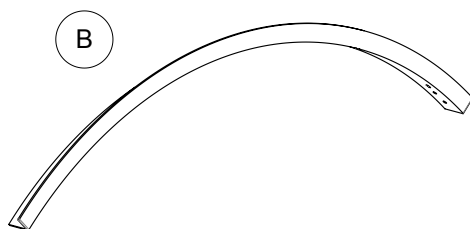
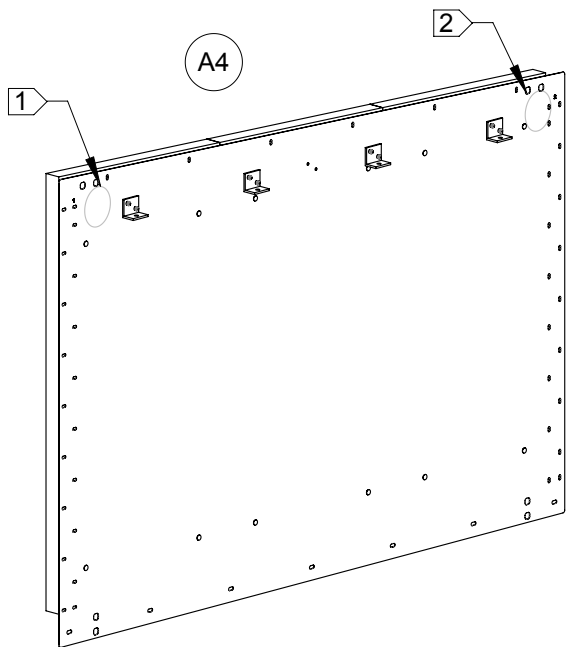
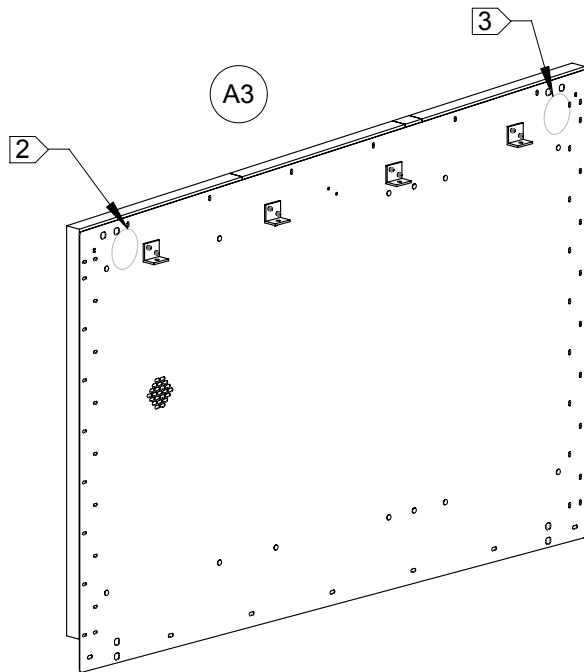
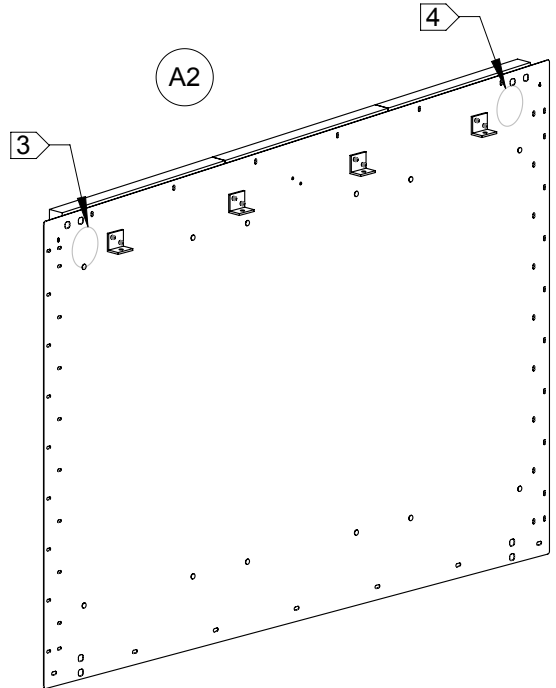
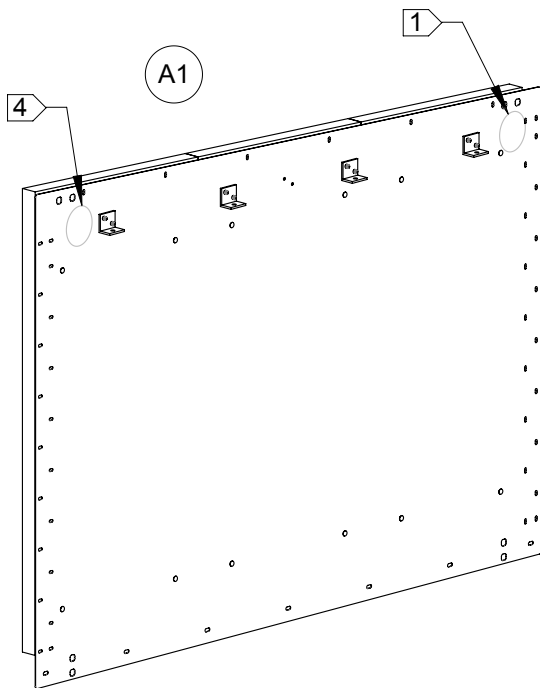
Tightening of hardware

It is recommended that all hardware is tightened to the torques specified in table 3. The integrity of the completed assembly depends on all fasteners being properly tightened.

Table 3: Fastener Torque Specifications

Fastener material		Fastener size		
		M6	M8	M10
Stainless Steel	N-m	7.7	19	38
	lbf-ft	5.7	14	28
Galvanized	N-m	-	-	38
	lbf-ft	-	-	28

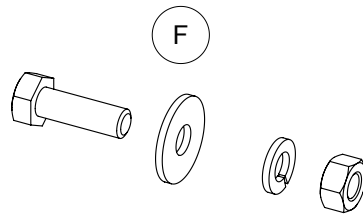
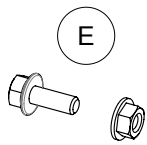
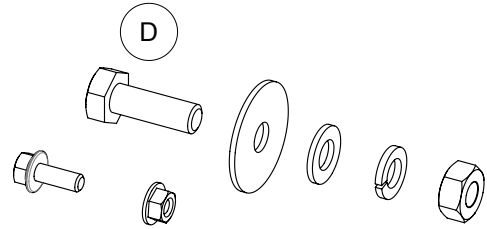
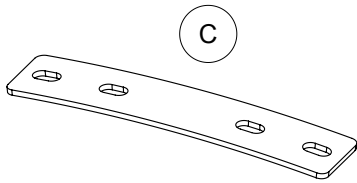
Components



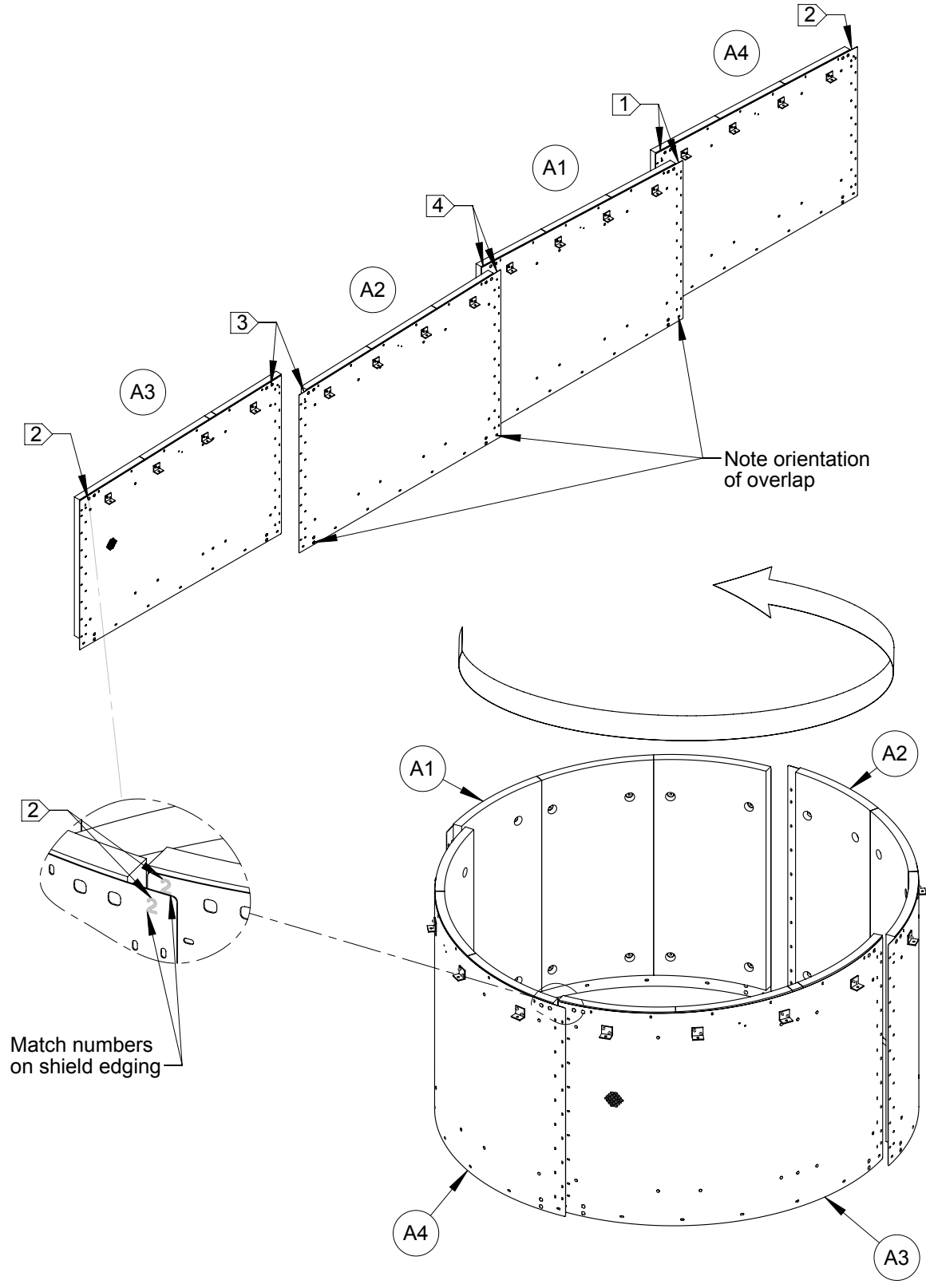
Supplied Components

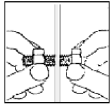
Item	Description	Remarks
A1	Shield Assembly (part number *-1)	
A2	Shield Assembly (part number *-2)	
A3	Shield Assembly (part number *-3)	
A4	Shield Assembly (part number *-4)	
B	Shield Ring	
C	Joint Plate	
D	Shield Ring Hardware Kit	
	D1 M10 x 30 Hex Hd Screw - sst, pass	
	D2 M10 Nut - sst, pass	
	D3 M10 Flat Washer - sst, pass	
	D4 M10 Large Flat Washer - Alum	
	D5 M10 Lock Washer - sst, pass	
	D6 M6 x 16 Flanged Hex Hd Screw - sst, pass	
	D7 M6 Flanged Nut - sst, pass	
E	Shield Hardware Kit	
	E1 M6 x 16 Flanged Hex Hd Screw - sst, pass	
	E2 M6 Flanged Nut - sst, pass	
F	Shield/Reflector Hardware Kit	
	F1 M8 x 25 Hex Hd Screw - sst, pass	
	F2 M8 Large Flat Washer - sst, pass	
	F3 M8 Lock Washer - sst, pass	
	F4 M8 Nut - sst, pass	

Components



SHIELD ASSEMBLY SEQUENCE

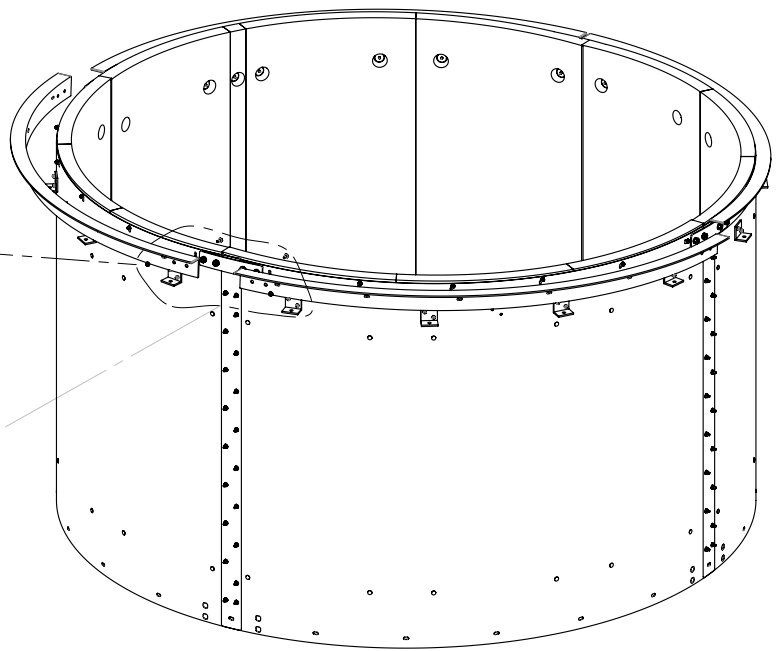
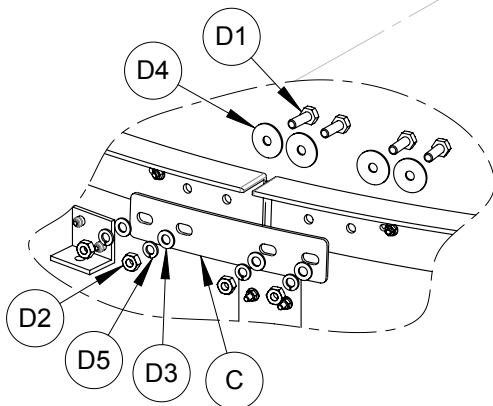
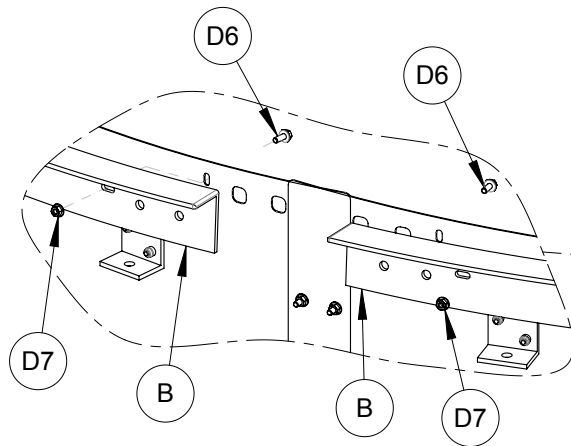
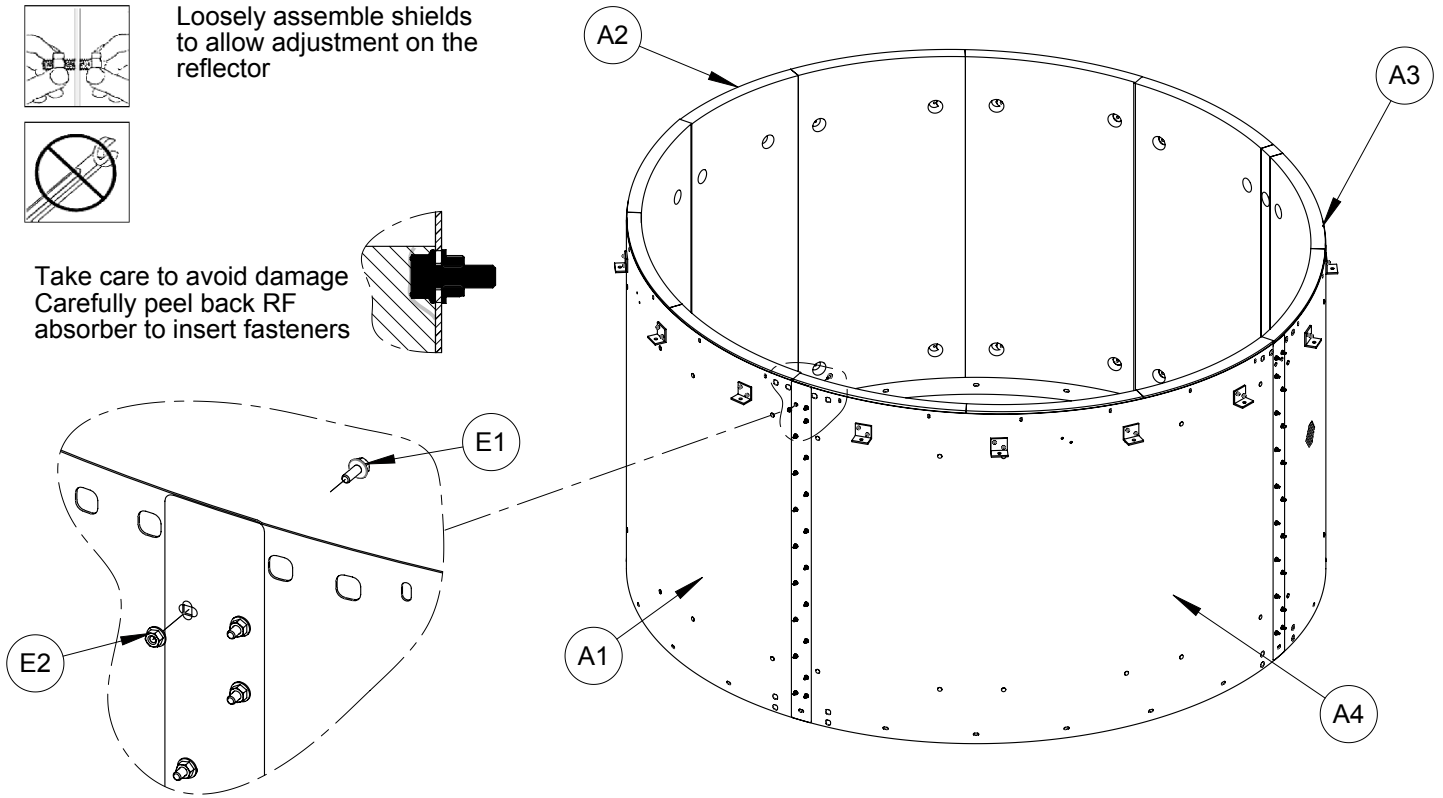
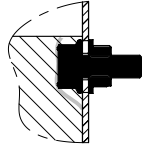


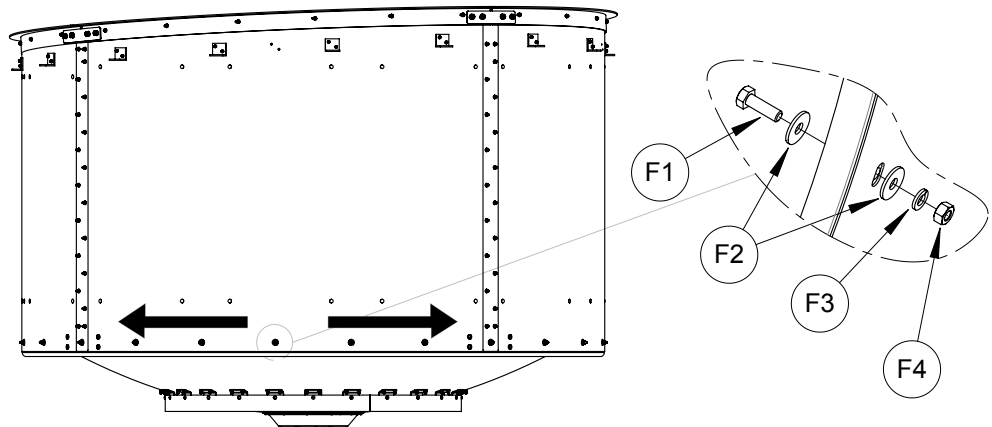
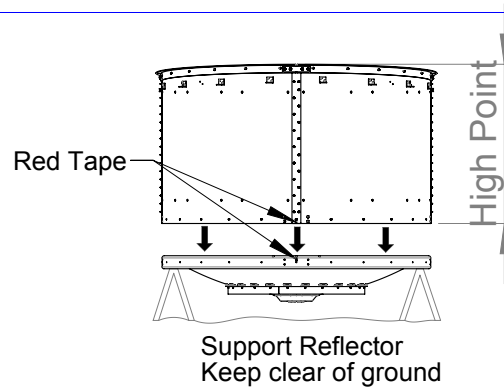


Loosely assemble shields to allow adjustment on the reflector



Take care to avoid damage
Carefully peel back RF
absorber to insert fasteners





M8-Starting at the middle of each segment tighten to a torque of $19\text{Nm} \pm 5\%$

