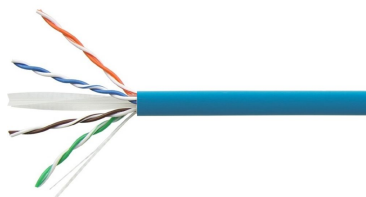


# 1427077-6 | CS30Z3 BLU C6 4/24 U/UTP RIB 305M

---



Category 6 U/UTP Cable, 24AWG, low smoke zero halogen, blue jacket, 4 pair count, 305 m length Reel in box

## Product Classification

<b>Regional Availability</b>	Asia   Latin America
<b>Portfolio</b>	NETCONNECT®
<b>Product Type</b>	Twisted pair cable

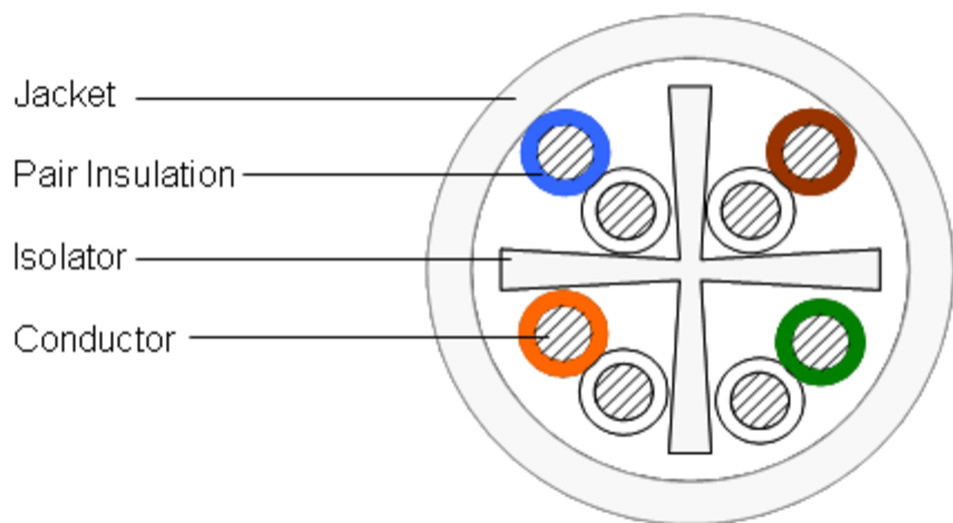
## General Specifications

<b>Product Number</b>	CS30Z3
<b>ANSI/TIA Category</b>	6
<b>Cable Component Type</b>	Horizontal
<b>Cable Type</b>	U/UTP (unshielded)
<b>Conductor Type, singles</b>	Solid
<b>Conductors, quantity</b>	8
<b>Jacket Color</b>	Blue
<b>Pairs, quantity</b>	4
<b>Separator Type</b>	Isolator
<b>Transmission Standards</b>	ANSI/TIA-568.2-D

## Dimensions

<b>Cable Length</b>	304.8 m   1000 ft
<b>Diameter Over Insulated Conductor</b>	0.978 mm   0.038 in
<b>Diameter Over Jacket, nominal</b>	5.588 mm   0.22 in
<b>Conductor Gauge, singles</b>	24 AWG

## Cross Section Drawing



## Electrical Specifications

<b>Characteristic Impedance</b>	100 ohm
<b>Characteristic Impedance Tolerance</b>	±15 ohm
<b>Nominal Velocity of Propagation (NVP)</b>	68 %
<b>Operating Voltage, maximum</b>	80 V
<b>Remote Powering</b>	Fully complies with the recommendations set forth by IEEE 802.3bt (Type 4) for the safe delivery of power over LAN cable when installed according to ISO/IEC 14763-2, CENELEC EN 50174-1, CENELEC EN 50174-2 or TIA TSB-184-A

## Material Specifications

<b>Conductor Material</b>	Bare copper
<b>Insulation Material</b>	Polyolefin
<b>Jacket Material</b>	Low Smoke Zero Halogen (LSZH)
<b>Separator Material</b>	Polyolefin

## Environmental Specifications

<b>Installation temperature</b>	0 °C to +60 °C (+32 °F to +140 °F)
<b>Operating Temperature</b>	-20 °C to +60 °C (-4 °F to +140 °F)
<b>Acid Gas Test Method</b>	IEC 60754-2
<b>Environmental Space</b>	Low Smoke Zero Halogen (LSZH)
<b>Flame Test Method</b>	IEC 60332-3-22

# 1427077-6 | CS30Z3 BLU C6 4/24 U/UTP RIB 305M

---

**Smoke Test Method** IEC 61034-2

## Packaging and Weights

**Packaging Type** Reel in box

## Regulatory Compliance/Certifications

### Agency

CHINA-ROHS

REACH-SVHC

ROHS

### Classification

Below maximum concentration value

Compliant as per SVHC revision on [www.commscope.com/ProductCompliance](http://www.commscope.com/ProductCompliance)

Compliant

