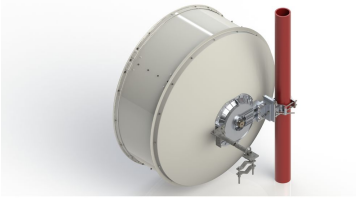


VHLPX4-6W-6-QD/C



1.2 m | 4 ft ValuLine® High Performance Low Profile Antenna, dual-polarized, 5.925–7.125 GHz, CPR137G, white antenna, flexible woven polymer gray radome without flash, fully assembled/Quick Deploy pack— one-piece reflector

Product Classification

| | |
|----------------------|-------------------|
| Product Type | Microwave antenna |
| Product Brand | ValuLine® |

General Specifications

| | |
|-------------------------------|--|
| Antenna Type | VHLPX - ValuLine® High Performance Low Profile Antenna, dual-polarized |
| Antenna Input | CPR137G |
| Antenna Color | White |
| Reflector Construction | One-piece reflector |
| Radome Color | Gray |
| Radome Material | Flexible woven polymer |
| Flash Included | No |

Dimensions

| | |
|--------------------------|--------------|
| Diameter, nominal | 1.2 m 4 ft |
|--------------------------|--------------|

Electrical Specifications

| | |
|---------------------------------|-------------------|
| Operating Frequency Band | 5.925 – 7.125 GHz |
|---------------------------------|-------------------|

Electrical Specifications, Band 2

| | |
|---------------------------------|-------------------|
| Operating Frequency Band | 5.700 – 5.875 GHz |
| Gain, Mid Band | 34.3 dBi |
| Beamwidth, Horizontal | 3.1 ° |
| Beamwidth, Vertical | 3.1 ° |

VHLPX4-6W-6-QD/C

Packaging and Weights

| | |
|-----------------------|---|
| Height, packed | 1058 mm 41.654 in |
| Width, packed | 1429 mm 56.26 in |
| Length, packed | 1561 mm 61.457 in |
| Packaging Type | Wooden crate |
| Volume | 2.4 m ³ 84.755 ft ³ |
| Weight, gross | 101 kg 222.667 lb |
| Weight, net | 32 kg 70.548 lb |

Regulatory Compliance/Certifications

| Agency | Classification |
|---------------|--|
| ISO 9001:2015 | Designed, manufactured and/or distributed under this quality management system |



* Footnotes

| | |
|---------------------------------|--|
| Operating Frequency Band | Bands correspond with CCIR recommendations or common allocations used throughout the world. Other ranges can be accommodated on special order. |
| Packaging Type | Andrew standard packing is suitable for export. Antennas are shipped as standard in totally recyclable cardboard or wire-bound crates (dependent on product). For your convenience, Andrew offers heavy duty export packing options. |