

2UNPX203.6R2



8-port multibeam antenna, 4x 698–894 and 4x 1710–2170 MHz, 4x 37° HPBW, 4x RET

- Single panel design supporting two separate beams perfectly optimized at horizontal pointing angles of +27 degrees and –27 degrees from boresight

OBSOLETE

This product was discontinued on: March 31, 2023

Replaced By:

2NN2HH-33B-R4 16-port multibeam antenna, 8x 698–896 MHz, 2x 2-beam 33° HPBW and 8x 1695–2400 MHz, 2x 2-beam 33° HPBW, 4x RET

General Specifications

Antenna Type	Multibeam
Band	Multiband
Color	Light Gray (RAL 7035)
Grounding Type	RF connector inner conductor and body grounded to reflector and mounting bracket
Performance Note	Outdoor usage
Radome Material	Polyester fiberglass pultrusion
Radiator Material	Aluminum Low loss circuit board
Reflector Material	Aluminum
RF Connector Interface	7-16 DIN Female
RF Connector Location	Bottom
RF Connector Quantity, high band	4
RF Connector Quantity, mid band	0
RF Connector Quantity, low band	4
RF Connector Quantity, total	8

Remote Electrical Tilt (RET) Information

RET Interface	8-pin DIN Male
RET Interface, quantity	2 male
Input Voltage	10–30 Vdc

2UNPX203.6R2

Internal RET	High band (2) Low band (2)
Power Consumption, idle state, maximum	2 W
Power Consumption, normal conditions, maximum	13 W
Protocol	3GPP/AISG 2.0 (Single RET)

Dimensions

Width	565 mm 22.244 in
Depth	127 mm 5 in
Length	1746 mm 68.74 in
Net Weight, without mounting kit	37 kg 81.571 lb

Electrical Specifications

Impedance	50 ohm
Operating Frequency Band	1710 – 2170 MHz 698 – 894 MHz
Polarization	±45°

Electrical Specifications

Frequency Band, MHz	698–790	790–894	1710–1920	1920–2170
Gain, dBi	13.8	14.5	16.2	17.5
Beam Centers, Horizontal, degrees	±28	±28	±30	±30
Beamwidth, Horizontal, degrees	42.6	36.8	35.1	31.9
Beamwidth, Vertical, degrees	25.1	21.7	12.1	11
Beam Tilt, degrees	1–16	1–16	0–10	0–10
USLS (First Lobe), dB	15	15	15	15
Front-to-Back Ratio at 180°, dB	20	20	30	30
Isolation, Cross Polarization, dB	22	22	20	20
VSWR Return loss, dB	1.43 15.0	1.43 15.0	1.43 15.0	1.43 15.0
PIM, 3rd Order, 2 x 20 W, dBc	-150	-150	-150	-150
Input Power per Port, maximum, watts	500	500	300	300

Mechanical Specifications

Wind Loading @ Velocity, frontal	1,258.0 N @ 150 km/h (282.8 lbf @ 150 km/h)
Wind Loading @ Velocity, lateral	194.0 N @ 150 km/h (43.6 lbf @ 150 km/h)
Wind Loading @ Velocity, rear	1,283.0 N @ 150 km/h (288.4 lbf @ 150 km/h)

2UNPX203.6R2

Wind Speed, maximum 250 km/h (155 mph)

Packaging and Weights

Width, packed 625 mm | 24.606 in

Depth, packed 270 mm | 10.63 in

Length, packed 1940 mm | 76.378 in

Weight, gross 43 kg | 94.799 lb

Regulatory Compliance/Certifications

Agency	Classification
CE	Compliant with the relevant CE product directives
CHINA-ROHS	Below maximum concentration value
ISO 9001:2015	Designed, manufactured and/or distributed under this quality management system
REACH-SVHC	Compliant as per SVHC revision on www.andrew.com/ProductCompliance
ROHS	Compliant
UK-ROHS	Compliant



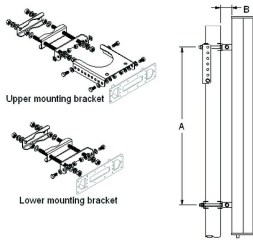
Included Products

- T-029-GL-E – Adjustable Tilt Pipe Mounting Kit for 2.362"-4.5" (60-115mm) OD round members for panel antennas. Includes 2 clamp sets.

* Footnotes

Performance Note Severe environmental conditions may degrade optimum performance

T-029-GL-E



Adjustable Tilt Pipe Mounting Kit for 2.362"-4.5" (60-115mm) OD round members for panel antennas. Includes 2 clamp sets.

Product Classification

Product Type Adjustable tilt mounting kit

General Specifications

Application Outdoor

Color Silver

Dimensions

Compatible Length, maximum 2850 mm | 112.205 in

Compatible Length, minimum 1500 mm | 59.055 in

Compatible Diameter, maximum 115 mm | 4.528 in

Compatible Diameter, minimum 60 mm | 2.362 in

Antenna-to-Pipe Distance 85 mm | 3.346 in

Bracket-to-Bracket Distance 1400 mm | 55.118 in

Weight, net 6 kg | 13.228 lb

Material Specifications

Material Type Galvanized steel

Mechanical Specifications

Mechanical Tilt 0°-8°

Packaging and Weights

Included Brackets | Hardware

Packaging quantity 1

Regulatory Compliance/Certifications

Agency	Classification
CE	Compliant with the relevant CE product directives

T-029-GL-E

CHINA-ROHS	Below maximum concentration value
ISO 9001:2015	Designed, manufactured and/or distributed under this quality management system
REACH-SVHC	Compliant as per SVHC revision on www.andrew.com/ProductCompliance
ROHS	Compliant
UK-ROHS	Compliant

