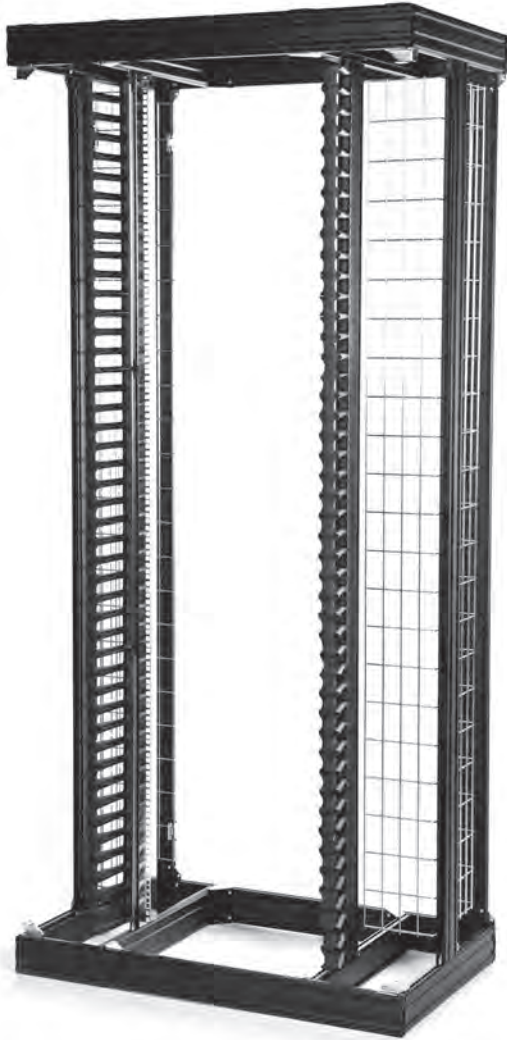
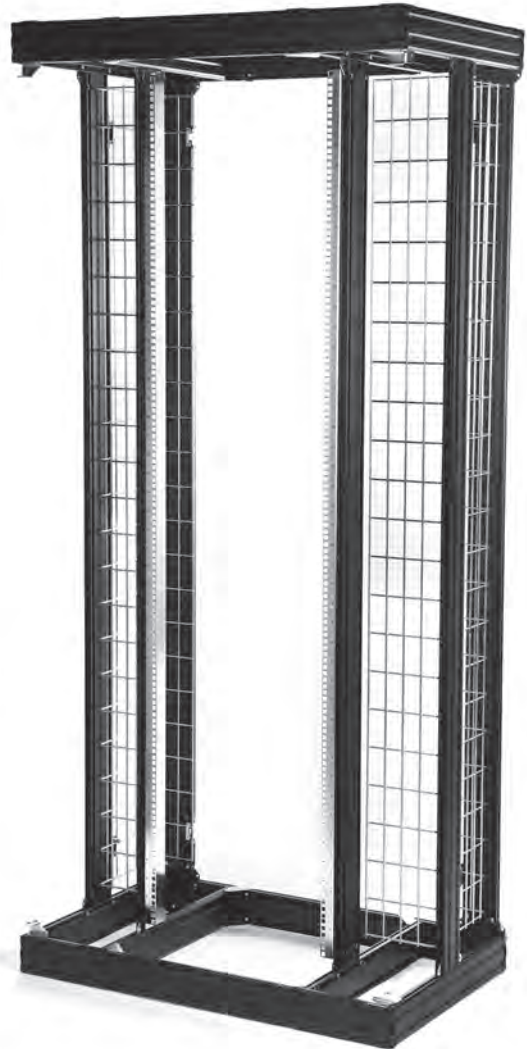


NETpodium Rack (1-1671405-1 & 1-1671405-2)

INSTRUCTION SHEET 411-117000 Jan 2017 Rev B



1-1671405-1



1-1671405-2

1. Kit Content

Bottom Frame Assembly	1 pc
Top Frame Assembly	1 pc
Carboard Stencil	1 pc
Vertical Profile Assembly	6 pc
Wire Basket	2 pcs
Bracket Wire Baskets	8 pcs
15U Cable Managers (only for 1-1671405-1)	6 pcs
Mounting Hardware	

NETpodium Rack

INSTRUCTION SHEET

2. Prefix: Installing the brackets with screws and Tool-less Fastener (TF)

2.1. The profile



2.2. Mounting a bracket or accessory with screws & washers



- Insert the bracket or accessory into the groove



- Line-up the hole(s)



- Assemble screw and washer in the T-channel
Use an Allan key n°5 with conical head
Bracket needs to be fixed with a torque of 3.5-4Nm

2.3. Mounting a bracket or accessory with Tool-less Fastener (TF)



- Insert the TF into the T-Channel



- Quarter turn clockwise



- TF is **ASSEMBLED** in the T-Channel, you can still slide it to choose it's position

NETpodium Rack INSTRUCTION SHEET

TWO WAYS TO USE IT (A or B)

A



- Push



- TF is FIXED, you can NOT slide it

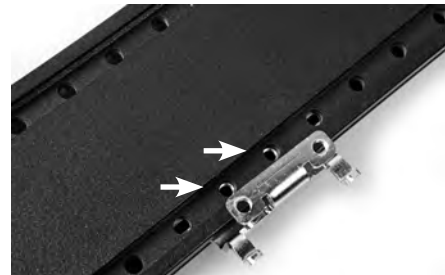


- A bracket or accessory can be slid with the slotted hole over the fastener pin into the groove

B



- Insert the accessory or bracket



- Line-up the holes



- Slide the fastener if necessary



- Push



- Fixation OK

NETpodium Rack

INSTRUCTION SHEET

2.4. Removing a bracket or accessory with Tool-less Fastener (TF)



- Pull to release the accessory or bracket

The previous step can also be done using a small, flat head screwdriver:



- Insert the screwdriver under the head of the TF and turn 90° counterclockwise to release.



- Accessory or bracket can be removed, TF is still assembled in T-Channel



- Quarter turn counter clockwise, to release TF



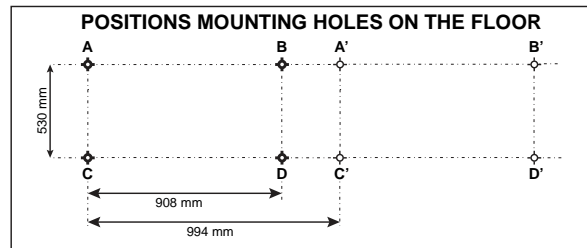
- Remove TF

3. Assembly instruction

3.1. Mount the frame to the floor



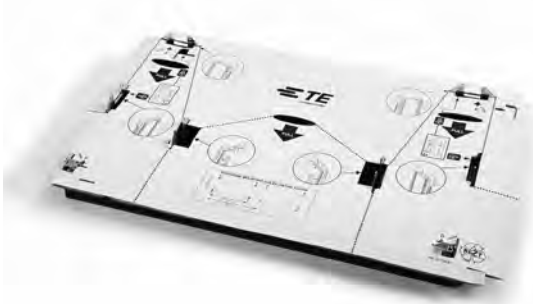
- Use the enclosed stencil to indicate the mounting positions on the floor, use the holes with references A,B,C and D.



- Anchor the bottom frame to the floor.

NETpodium Rack INSTRUCTION SHEET

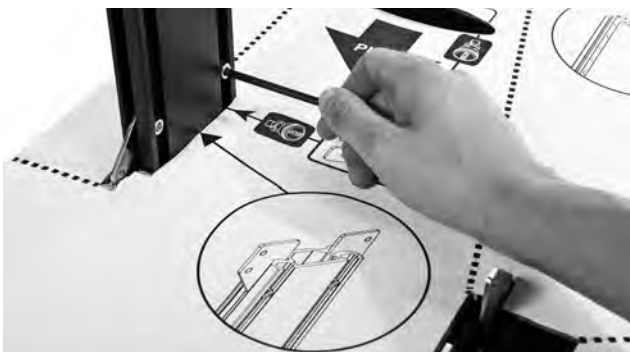
3.2. Assemble the profiles



- Put the stencil on top of the bottom frame.



- Assemble all the Vertical Profiles.
To position the vertical profiles look at the pictures on the stencil. Pay attention to the brackets assembled on the profiles.



- Fix the screws with washers with a torque of 3.5-4Nm.
(See Paragraph 2.2.).



- The result.



- Slide the Stencil towards the top.



- Assemble one TF on two Vertical Profiles to prevent the stencil from dropping down (position fastener: 3 holes from the top of the Vertical Profile) (See paragraph 2.3).

NETpodium Rack INSTRUCTION SHEET



- The result.



- Assemble the Top Frame on the Vertical profiles.



- Loosen the TF's and lower the stencil a little bit.
Fix all screws of the top frame assembly properly
(a torque of 3.5-4Nm).



- ATTENTION: Fix the brackets in the corner of the Top Frame assembly on the Vertical profiles.

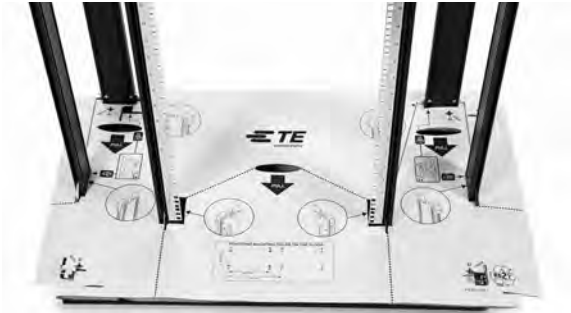


- Remove the TF's (See paragraph 2.4) and slide the stencil back downwards.
- Fix all screws of the bottom frame assembly properly
(a torque of 3.5-4Nm).

NETpodium Rack

INSTRUCTION SHEET

3.3. Assemble the wire baskets



- The TF's for the brackets for the Wire Baskets have to be assembled in the 4 profile channels indicated on the stencil.
- In each corresponding groove, 2 brackets have to be assembled. One on the top side and one on the bottom side of the groove.
- To mount the 4 wire basket brackets on the top side:



1. First mount a TF in the channel (position indicated on the stencil) and fix it in the 3rd available hole beneath the screw on the top side of the profile. (See paragraph 2.3).



2. Assemble the wire basket bracket in the groove and position it on the TF.



3. Mount the second TF in the channel, in the third hole beneath the first TF and fix it. (See paragraph 2.3.)

Repeat this for the 4 wire basket brackets mounted on the top side of the profiles. See positions indicated on the stencil.

- To mount the 4 wire basket brackets on the bottom side:



1. First mount a TF in the channel (position indicated on stencil) and fix it in the 6th available hole above the screw on the bottom side of the profile. (See paragraph 2.3).



2. Assemble the wire basket bracket in the groove and position it on the TF.



3. Mount the second TF in the channel, in the third hole beneath the first TF and fix it. (See paragraph 2.3.)

- Repeat this for the 4 wire basket brackets mounted on the bottom side of the profiles. See positions indicated on the stencil.

NETpodium Rack INSTRUCTION SHEET



- Tear the stencil apart, use the holes indicated by PULL. You don't need it anymore.



- Hang the wire baskets with the shortest side in the brackets towards the back.



- Position it at the same time on the second horizontal wire from the top and bottom, see picture.



- Then rotate the wire baskets inwards and hang them in the brackets towards the front side.



- To fix each wire basket use only ONE screw and washer per wire basket.



- To ground each wire basket use only ONE screw and washer per wire basket.

3.4. Assemble the cable managers (15U)



- Insert the bracket with cable managers 15U into the groove and fix it with TF's. (See paragraph 2.3.)



- The position of the TF is indicated with a small cut on the top and bottom of the metal bracket.

NETpodium Rack

INSTRUCTION SHEET



- To ground the bracket mount the screw. The position is indicated with two small cuts in the middle of the metal bracket.

3.5. How to remove a cable manager



- Insert the screwdriver in the small cutout and turn 90° to release. Repeat this in the 4 cutouts of the the cable manager.



- Use two screwdrivers to release the snap hooks on the reverse of the metal bracket.



- Push to remove the cable manager.



- Cable manager is removed.

4. Troubleshooting

- If it is not possible to assemble screw and washer while mounting a bracket:

Loosen the already assembled screws of the bracket.
Move the bracket a little bit to align the holes properly.
Fix all screws with a torque of 3.5-4Nm.

INSTRUCTION SHEET

Contact us:
Technical Support
Technical Assistance Center (TAC)
Greensboro, North Carolina
www.commscope.com

Tel: 800.830.5056
Email: TAC.Americas@commscope.com
www.commscope.com/SupportCenter/TechnicalSupport.aspx

This product is covered by one or more U.S. patents or their foreign equivalents. For patents, see www.commscope.com/ProductPatent/ProductPatent.aspx

To obtain more information on CommScope® products visit our website at www.commscope.com/supportcenter/TechnicalSupport.aspx

COMMSCOPE®

©2017 CommScope, Inc.
All Rights Reserved.