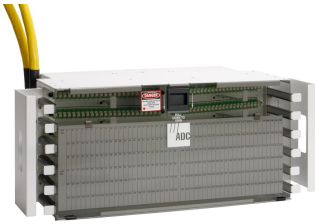


FCM-67/0DS035



FDF Fiber Termination Panel, 72 SC/UPC, singlemode, 8 in x 23 in, putty white, pre-terminated with IFC cable, 35 meters, stub tail at far end

Product Classification

Regional Availability	Latin America North America
Portfolio	CommScope®
Product Type	Fiber patch panel, with IFC cable
Product Series	FDF

General Specifications

Functionality	Patching
Application	Used in rear-load FDF-style frames only
Body Style	Symmetrical
Cable Exit Location	Upward
Cable Stub Type	IFC, ribbon
Color	Putty white
Color, front	Putty white
Growth Configuration	Fully loaded
Interface, front	SC/UPC
Interface, rear	Stub tail
Patch Cord Entry Location	Front, left side Front, right side
Rack Type	EIA 23 in
Rack Units	4.57
Shelf Movement	Fixed
Total Ports, quantity	72

Dimensions

Height	203.2 mm 8 in
Width	584.2 mm 23 in
Depth	304.8 mm 12 in

FCM-67/ODS035

Cable Length 35 m | 114.829 ft

Material Specifications

Finish Powder coated

Material Type Steel

Optical Specifications

Fiber Mode Singlemode

Environmental Specifications

Operating Temperature -40 °C to +70 °C (-40 °F to +158 °F)

Packaging and Weights

Packaging quantity 1

Regulatory Compliance/Certifications

Agency	Classification
CHINA-ROHS	Above maximum concentration value
REACH-SVHC	Compliant as per SVHC revision on www.commscope.com/ProductCompliance
ROHS	Compliant/Exempted
UK-ROHS	Compliant/Exempted

