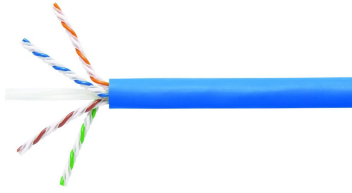


884031014/10 | CS44R BLU C6A 4/23 U/UTP CPK 1KFT



CS44R ETL Verified Category 6A U/UTP Cable, non-plenum, blue jacket, 4 pair count, 1000 ft (305 m) length CommPak

Product Classification

Regional Availability	North America
Portfolio	NETCONNECT®
Product Type	Twisted pair cable

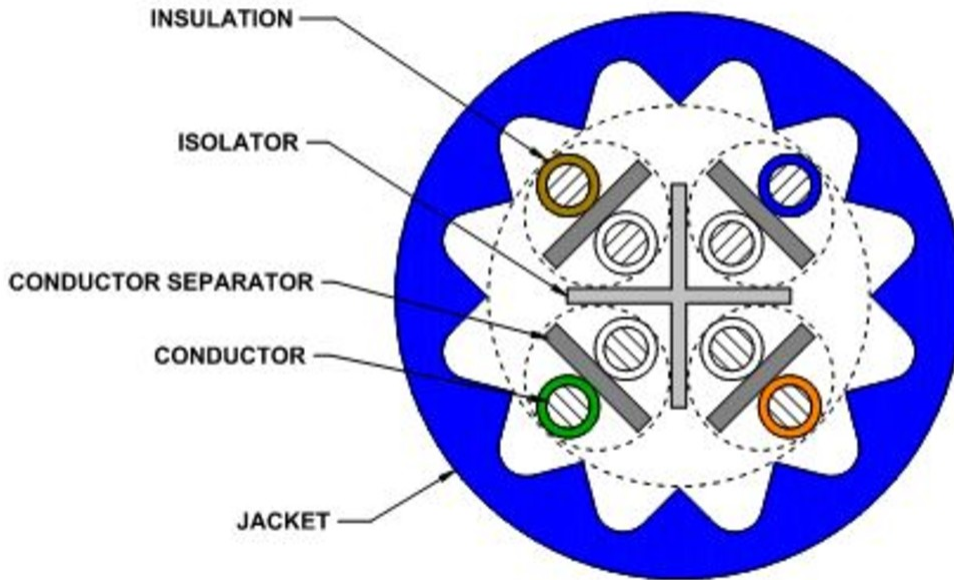
General Specifications

Product Number	CS44R
ANSI/TIA Category	6A
Cable Component Type	Horizontal
Cable Type	U/UTP (unshielded)
Conductor Type, singles	Solid
Conductors, quantity	8
Jacket Color	Blue
Pairs, quantity	4
Separator Type	Bisector
Transmission Standards	ANSI/TIA-568.2-D ISO/IEC 11801 Class EA

Dimensions

Cable Length	304.8 m 1000 ft
Diameter Over Insulated Conductor	0.864 mm 0.034 in
Diameter Over Jacket, nominal	7.239 mm 0.285 in
Jacket Thickness	1.295 mm 0.051 in
Conductor Gauge, singles	23 AWG

Cross Section Drawing



Electrical Specifications

dc Resistance Unbalance, maximum	4 %
dc Resistance, maximum	7.61 ohms/100 m 2.32 ohms/100 ft
Dielectric Strength, minimum	1500 Vac 2500 Vdc
LP (Limited Power) Rating	0.6 A
Mutual Capacitance at Frequency	6.0 nF/100 m @ 1 kHz
Nominal Velocity of Propagation (NVP)	65 %
Operating Frequency, maximum	500 MHz
Operating Voltage, maximum	80 V
Remote Powering	Fully complies with the recommendations set forth by IEEE 802.3bt (Type 4) for the safe delivery of power over LAN cable when installed according to ISO/IEC 14763-2, CENELEC EN 50174-1, CENELEC EN 50174-2 or TIA TSB-184-A
Safety Voltage Rating	300 V

Electrical Cable Performance

CS	CommScope	NEXT	Near End Crosstalk (dB/100m)
STD	Refers to the standard value listed under Transmission Standards in the Electrical Specifications above	PSNEXT	Power Sum Near End Crosstalk (db/100m)
TYP	Typical Electrical Performance	ACRF	Attenuation to Crosstalk Ratio - Far End (dB/100m)
IL	Insertion Loss (dB/100m)	RL	Return Loss (dB)
ACR	Attenuation to Crosstalk Ratio (dB/100m)	ELTCTL	Equal Level Transverse Conversion Transfer Loss (dB/100m)
PSACR	Power Sum Attenuation to Crosstalk Ratio (dB/100m)		
PSACRF	Power Sum Attenuation to Crosstalk Ratio - Far End (dB/100m)		
TCL	Transverse Conversion Loss (dB/100m)		

Freq. MHz	IL		NEXT		ACR		PSNEXT		PSACR		ACRF		PSACRF		RL	
	STD	TYP	STD	TYP	STD	TYP	STD	TYP	STD	TYP	STD	TYP	STD	TYP	STD	TYP
1	2.1	1.8	74.3	90.6	72.2	88.8	72.3	88.3	70.2	86.5	67.8	82.1	64.8	80.3	20	32.2
4	3.8	3.6	65.3	82.4	61.5	78.8	63.3	80.2	59.5	76.6	55.8	70.1	52.8	68.4	23	33.9
8	5.3	5.1	60.8	77.6	55.4	72.5	58.8	75.8	53.4	70.7	49.7	64.1	46.7	62.3	24.5	36.7
10	5.9	5.7	59.3	76.4	53.4	70.7	57.3	74.4	51.4	68.7	47.8	62.2	44.8	60.4	25	37.7
16	7.5	7.3	56.2	73.1	48.8	65.9	54.2	71.3	46.8	64	43.7	58.2	40.7	56.4	25	38.7
20	8.4	8.1	54.8	71.5	46.4	63.4	52.8	69.7	44.4	61.6	41.8	56.4	38.8	54.5	25	38.7
25	9.4	9.1	53.3	70.2	44	61.1	51.3	68.3	42	59.2	39.8	54.5	36.8	52.6	24.3	35.5
31.25	10.5	10.2	51.9	68.6	41.4	58.4	49.9	66.7	39.4	56.5	37.9	52.7	34.9	50.7	23.6	37.2
62.5	15	14.6	47.4	64.2	32.4	49.6	45.4	62.3	30.4	47.7	31.9	46.6	28.9	44.7	21.5	34.6
100	19.1	18.6	44.3	60.8	25.2	42.1	42.3	59	23.2	40.3	27.8	42.5	24.8	40.5	20.1	30.3
155	24.1	23.4	41.4	58.4	17.4	35	39.4	56.4	15.4	33	24	38.9	21	37	18.8	30.8
200	27.6	26.8	39.8	56	12.2	29.2	37.8	54.2	10.2	27.4	21.8	36.6	18.8	34.6	18	30
250	31.1	30.1	38.3	54.3	7.3	24.2	36.3	52.5	5.3	22.3	19.8	34.6	16.8	32.6	17.3	30.5
300	34.3	33.1	37.1	53.1	2.9	19.9	35.1	51.2	0.9	18.1	18.3	33.1	15.3	31.2	16.8	31.1
350	37.2	36	36.1	51.8	-1.1	15.8	34.1	49.9	-3.1	13.9	16.9	31.9	13.9	29.9	16.3	31.7
400	40.1	38.8	35.3	50.8	-4.8	12	33.3	48.8	-6.8	10	15.8	30.6	12.8	28.6	15.9	31.5
500	45.3	43.6	33.8	47.9	-11.4	4.3	31.8	45.8	-13.4	2.2	13.8	28.7	10.8	26.7	15.2	32
550		43.8		48		4.1		45.9		2		28.6		26.7		31.9
650		50.2		43.5		-6.7		41.5		-8.8		25.7		23.5		25.3

Material Specifications

Conductor Material	Bare copper
Insulation Material	Polyolefin
Jacket Material	PVC
Separator Material	Polyolefin

Mechanical Specifications

Pulling Tension, maximum 11.34 kg | 25 lb

Environmental Specifications

884031014/10 | CS44R BLU C6A 4/23 U/UTP CPK 1KFT

Installation temperature	0 °C to +60 °C (+32 °F to +140 °F)
Operating Temperature	-20 °C to +60 °C (-4 °F to +140 °F)
Environmental Space	Non-plenum
Temperature Rating, ETL	75 °C 167 °F
Flame Test Method	CMR NEC Article 800 UL 1666 UL 444

Packaging and Weights

Cable weight	56.61 kg/km 38.04 lb/kft
Packaging Type	CommPak® box

Regulatory Compliance/Certifications

Agency	Classification
ISO 9001:2015	Designed, manufactured and/or distributed under this quality management system

