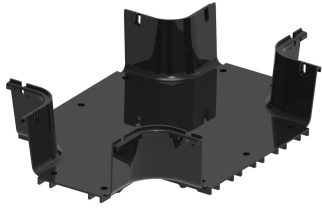


FGSB-MHXP-B/F



FiberGuide® Horizontal Cross with Dual 4x6in and Dual 4x12in Exits, Black

Product Classification

Regional Availability	Asia Australia/New Zealand EMEA Latin America North America
Portfolio	CommScope®
Product Type	Cross
Product Brand	FiberGuide®
Product Series	FGS

General Specifications

Color	Black
Orientation	Horizontal
Section Type	Cross section

Dimensions

System Dimensions	102 mm x 152 mm (4 in x 6 in) 102 mm x 305 mm (4 in x 12 in)
--------------------------	--

Ordering Tree

FGSB-MHXP-B/F



Section Color

9	empty	yellow
	B	black

Section Size

10	A	4 x 4 in
	B	4 x 6 in
	B/F	4 x 12 in, with two 4 x 6 in exits
	B/F-VS	4 x 12 in, with two 4 x 6 in exits, variable support bracket
	C	2 x 2 in
	F	4 x 12 in
	F/H	4 x 24 in, with two 4 x 12 in exits
	F/H-VS	4 x 24 in, with two 4 x 12 in exits, variable support bracket
	F/VS	4 x 12 in, variable support bracket
	G	2 x 6 in
	H	4 x 24 in
	H-VS	4 x 24 in, variable support bracket
	M	4 x 18 in
	M/H	4 x 18 in, with two 4 x 24 in exits
M/F	4 x 18 in, with two 4 x 12 in exits	

* Support brackets only come in black

Material Specifications

Material Type Engineering Thermoplastic

Environmental Specifications

Flammability Rating CSA S143 | UL 2024 | UL 94 V-0

Halogen Characteristics Blue Angel | TCO '99 | WEEE

Safety Standard CSA | UL

Packaging and Weights

Weight, net 1.723 kg | 3.799 lb

Regulatory Compliance/Certifications

Agency	Classification
CHINA-ROHS	Below maximum concentration value
REACH-SVHC	Compliant as per SVHC revision on www.commscope.com/ProductCompliance
ROHS	Compliant
UK-ROHS	Compliant

