

CommScope standard density fiber optic panels

Reliably revolutionary high performance
communication solutions

COMMScope®

For the last 50 years, fiber optic networks have steadily expanded throughout major metropolitan cities and surrounding suburbs. As more service providers introduce highspeed fiber connections to commercial and residential buildings, enterprises are left with the task of distributing fiber to their tenants. The experts at CommScope are available to help you realize the potential of your building's network and provide your building tenants the blazing fast speed they demand.

Bringing fiber home to your building

Whether you're upgrading a telecommunication closet or designing a small data center, choosing the right fiber shelving to support your infrastructure is essential to your network's future. Quality fiber shelves are the foundation of a hard-working network. They should do more than just protect your connectivity from dust, dirt and moisture. They should also be flexible, compact and easy to use.

Flexible

Moves, additions and changes are easy to maximize network uptime.

Compact

Doing more with less is essential when space is at a premium.

Simple

The right fiber solutions make deployment quick and straightforward.



The global fiber optics market is expected to expand at a compound annual growth rate (CAGR) of nearly 9.5% through 2020.

Markets and Markets' Global Fiber Optics Market 2016-2020 report

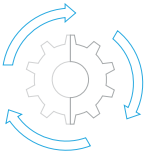
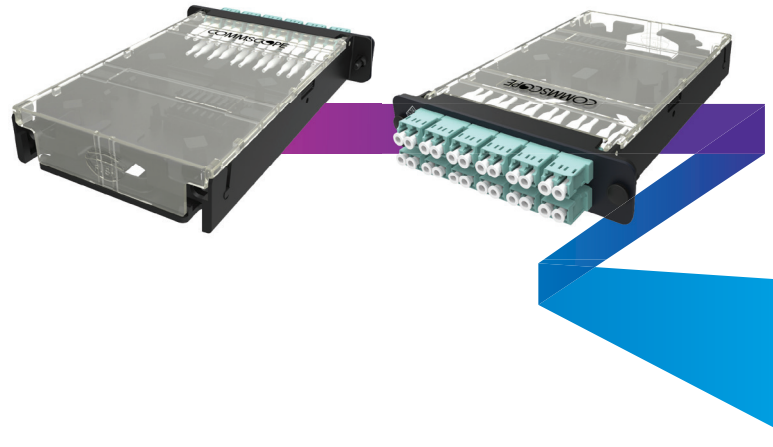
http://www.researchandmarkets.com/research/3w8gdq/global_fiber

Maximizing your fiber investment

CommScope standard density (SD) fiber optic panels were specifically designed to make your building's infrastructure effective, efficient and easier to manage. These SD solutions deliver high performance through modular and pigtailed splicing cassettes. The SD pigtailed splice cassette enables faster splicing in the field and easy modular management of connectorization within the cassette. At the core of these solutions is our modular design: install what you need now; build out later and pay-as-you-grow.

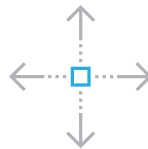
To make assembling your communications network as easy as possible, SD splice cassettes are designed for individual pigtails, each pre-loaded and pre-routed for quick fusion splicing. These cassettes provide a protective space for fusion splicing, patching and storing your fiber optic cables. By incorporating these advantages into a single cassette, you can be confident that your connections and cabling will be safeguarded from contamination or future damage.

In addition, these SD solutions also give building owners the flexibility to create a data center or telecom closet that matches their exact needs. The panel-and-module design simplifies any moves, additions and changes—making installation quick and easy, which maximizes your network uptime.



CONVENIENT

- Enables easy fusion splicing
- Provides for simple fiber cable management
- Streamlined and optimized for building applications



FLEXIBLE

- Simplifies moves, adds and changes
- Scalable up to 24 fibers per module
- Utilizes LGX foot print
- Preterminated, field term or splicing cassettes (I/O cable)



ECONOMICAL

- Cost-effective fiber solution
- Modular design offers pay-as-you-grow flexibility
- Factory-connectorized pigtails reduces installation time

CommScope SD panels—more than 40 years in the making

Since 1976, CommScope has designed, built and deployed the world's most reliable communications infrastructure. We've developed our SD solutions by leveraging our experience of working with thousands of customers to refine our solutions to perform virtually maintenance-free.



SMALL BUT MIGHTY

Telecom and datacom racks are often found in cramped spaces, coughing up a spaghetti of cables. Our SD solutions bring organization to your telecom closets and data centers. These 19-inch panels fit perfectly in your racks, providing adequate room for managing your connectivity as well as your cables. They also come in variety of sizes with LC or MPO connectors to match your specific needs.

STANDARD DENSITY (SD) MODULE (1000-TYPE)		
	DUPLEX LC	MPO
1U	36	24
2U	72	48
4U	144	96

Ordering Information

FIBER PANELS		
MATERIAL ID	PRODUCT NUMBER	DESCRIPTION
760231449	SD-1U	SD 1U sliding fiber panel, accepts (3) SD splice cassettes, ReadyPATCH® MPO-LC modules, or ReadyPATCH® adapter panels, providing up to 36 duplex LC ports or up to 24 MPO ports
760231456	SD-2U	SD 2U sliding fiber panel, accepts (6) SD splice cassettes, ReadyPATCH® MPO-LC modules, or ReadyPATCH® adapter panels, providing up to 72 duplex LC ports or up to 48 MPO ports
760231464	SD-4U	SD 4U sliding fiber panel, accepts (12) SD splice cassettes, ReadyPATCH® MPO-LC modules, or ReadyPATCH® adapter panels, providing up to 144 duplex LC ports or up to 96 MPO ports
760231472	SD-1U-FX	SD 1U fixed fiber panel, accepts (3) SD splice cassettes, ReadyPATCH® MPO-LC modules, or ReadyPATCH® adapter panels, providing up to 36 duplex LC ports or up to 24 MPO ports
760231480	SD-2U-FX	SD 2U fixed fiber panel, accepts (6) SD splice cassettes, ReadyPATCH® MPO-LC modules, or ReadyPATCH® adapter panels, providing up to 72 duplex LC ports or up to 48 MPO ports
760231498	SD-4U-FX	SD 4U fixed fiber panel, accepts (12) SD splice cassettes, ReadyPATCH® MPO-LC modules, or ReadyPATCH® adapter panels, providing up to 144 duplex LC ports or up to 96 MPO ports



SPLICE PANEL		
MATERIAL ID	PRODUCT NUMBER	DESCRIPTION
760242725	SD-4U-SPLICE	Fiber splicing panel providing up to 1728 mass fusion splicing or 288 single fiber splicing. Accepts up to six (6) FOST splice trays sold separately
760241731	FOST-ACC-C-TRAY-RIBN-24	FOST splice tray 288f ribbon fiber splicing or 48f stranded fiber splicing per tray

Ordering Information



FIBER MPO MODULES		
MATERIAL ID	PRODUCT NUMBER	DESCRIPTION
760167866	RP-MOD-012-LS-MPO-LC02	ReadyPATCH® Standard Module, 12 LC LazrSPEED®
760167874	RP-MOD-012-TS-MPO-LC02	ReadyPATCH® Standard Module, 12 LC TeraSPEED®
760167916	RP-MOD-024-LS-MPO-LC02	ReadyPATCH® Standard Module, 24 LC LazrSPEED®
760167924	RP-MOD-024-TS-MPO-LC02	ReadyPATCH® Standard Module, 24 LC TeraSPEED®
760167965	RP-MOD-012-LS-MPO-SC02	ReadyPATCH® LazrSPEED® Standard Module, 12 SC ports
760167973	RP-MOD-012-TS-MPO-SC02	ReadyPATCH® TeraSPEED® Standard Module, 12 SC ports



FIBER SPLICE CASSETTES		
MATERIAL ID	PRODUCT NUMBER	DESCRIPTION
760221739	PNL-CS-12LCX-PT	Splicing cassette, 12 LC LazrSPEED®, 900µm, Pigtailed included
760221697	PNL-CS-24LCX-PT	Splicing cassette, 24 LC LazrSPEED®, 900µm, Pigtailed included
760221770	PNL-CS-12SCX-PT	Splicing cassette, 12 SC LazrSPEED®, 900µm, Pigtailed included
760221747	PNL-CS-12LCW-PT	Splicing cassette, 12 LC UPC TeraSPEED®, 900µm, Pigtailed included
760221705	PNL-CS-24LCW-PT	Splicing cassette, 24 LC UPC TeraSPEED®, 900µm, Pigtailed included
760221788	PNL-CS-12SCW-PT	Splicing cassette, 12 SC UPC TeraSPEED®, 900µm, Pigtailed included
760222596	PNL-CS-12LAW-PT	Splicing cassette, 12 LC APC, 900 um, Pigtailed included
760222588	PNL-CS-24LAW-PT	Splicing cassette, 24 LC APC, 900 um, Pigtailed included
760236500	PNL-CS-12LCX	Splicing cassette, 12 LC LazrSPEED®, no pigtail
760236501	PNL-CS-12LCW	Splicing cassette, 12 LC UPC TeraSPEED®, no pigtail
760236502	PNL-CS-12LAW	Splicing cassette, 12 LC APC TeraSPEED®, no pigtail
760236503	PNL-CS-24LCX	Splicing cassette, 24 LC LazrSPEED®, no pigtail
760236504	PNL-CS-24LCW	Splicing cassette, 24 LC UPC TeraSPEED®, no pigtail
760236505	PNL-CS-24LAW	Splicing cassette, 24 LC APC TeraSPEED®, no pigtail
760236506	PNL-CS-12SCX	Splicing cassette, 12 SC LazrSPEED®, no pigtail
760236507	PNL-CS-12SCW	Splicing cassette, 12 SC UPC TeraSPEED®, no pigtail
760236508	PNL-CS-12SAW	Splicing cassette, 12 SC APC TeraSPEED®, no pigtail
760239370	PNL-CS-12LCM	Splicing cassette, 12LC OptiSPEED®, no pigtail
760239371	PNL-CS-24LCM	Splicing cassette, 24LC OptiSPEED®, no pigtail
760242108	PNL-CS-12LCV-PT	Splicing cassette, 12LC LazrSPEED® wideband, 900µm Pigtailed included
760242109	PNL-CS-24LCV-PT	Splicing cassette, 24LC LazrSPEED® wideband, 900µm Pigtailed included
760242110	PNL-CS-12LCV	Splicing cassette, 12LC LazrSPEED® wideband, no pigtail
760242111	PNL-CS-24LCV	Splicing cassette, 24LC LazrSPEED® wideband, no pigtail

* Fiber Splice Cassettes include the splice sleeves.

Ordering Information



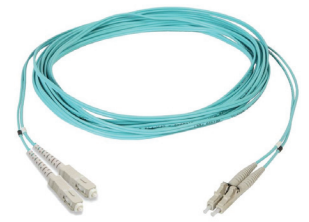
FIBER ADAPTER PACKS		
MATERIAL ID	PRODUCT NUMBER	DESCRIPTION
760148171	PNL-BK-024-MFA-LC02-AQ-NS	LazrSPEED® LC, 24 Fiber, Aqua Duplex Adapter, black panel, no shutter
760149344	PNL-BK-012-MFA-LC02-AQ-NS	LazrSPEED® Adapter pack, Black, 1000-Type, with 6 MM duplex LC adapters, aqua, no shutter
760148056	PNL-BK-012-MFA-LC12-AQ	LazrSPEED® LC, 12 Fiber, Aqua Ganged Adapter, black panel
760147975	PNL-BK-006-MFA-SC06-AQ	LazrSPEED® SC, 6 Fiber, Aqua Ganged Adapter, black panel
760148189	PNL-BK-024-MFA-LC02-BG-NS	OptiSPEED® LC, 24 Fiber, Beige Duplex Adapter, black panel, no shutter
760149336	PNL-BK-012-MFA-LC02-BG-NS	Adapter pack, Black, 1000-Type, with 6 OptiSPEED® multimode duplex LC adapters, beige, no shutter
760148064	PNL-BK-012-MFA-LC12-BG	OptiSPEED® LC, 12 Fiber, Beige Ganged Adapter, black panel
760147983	PNL-BK-006-MFA-SC06-BG	OptiSPEED® SC, 6 Fiber, Beige Ganged Adapter, black panel
760021790	PNL-BK-012-MFA-SC02-BG	OptiSPEED® SC, 12 Fiber, Beige Duplex Adapter, black panel
760066076	PNL-BK-012-MFA-SC02-AQ	LazrSPEED® SC, 12 Fiber, Aqua Duplex Adapter, black panel
760148361	PNL-BK-024-SFA-LC02-BL-NS	TeraSPEED® LC, 24 Fiber, Blue Duplex Adapter, black panel, no shutter
760149351	PNL-BK-012-SFA-LC02-BL-NS	Adapter pack, Black, 1000-Type, with 6 TeraSPEED® SM duplex LC adapters, blue, no shutter
760148254	PNL-BK-012-SFA-LC12-BL	TeraSPEED® LC, 12 Fiber, Blue Ganged Adapter, black panel
760147637	PNL-BK-012-AFA-LC12-GR	TeraSPEED® LC Angled, 12 Fiber, Green Ganged Adapter, black panel
760147652	PNL-BK-006-AFA-SC06-GR	TeraSPEED® SC Angled, 6 Fiber, Green Ganged Adapter, black panel
760027714	PNL-BK-012-SFA-SC02-BL	TeraSPEED® SC, 12 Fiber, Blue Duplex Adapters, black panel
760148213	PNL-BK-006-SFA-SC06-BL	TeraSPEED® SC, 6 Fiber, Blue Ganged Adapter, black panel
760150094	PNL-BK-024-AFA-LC02-GR-NS	TeraSPEED® LC/APC, 24 Fiber, Green Duplex Adapter, black panel, no shutter
760117267	PNL-BK-012-AFA-SC02-GR	TeraSPEED® SC/APC, 12 Fiber, Green Duplex Adapter, black panel
760242424	PNL-BK-012-WFA-LC02-LG-NS	LazrSPEED® Wideband LC, 12 Fiber Lime Green Duplex adapter, no shutter
760242423	PNL-BK-024-WFA-LC02-LG-NS	LazrSPEED® Wideband LC, 24 Fiber, Lime Green Duplex adapter, no shutter
760015412	RFE-PNL-2-MPO	Adapter Panel, Black, 1000-Type, with 2 12 fiber MPO adapters
760034280	RFE-PNL-6-MPO	Adapter Panel, Black, 1000-Type, with 6 12 fiber MPO adapters
760056077	RFE-PNL-8-MPO	Adapter Panel, Black, 1000-Type, with 8 12 fiber MPO adapters

AVAILABLE ACCESSORIES		
MATERIAL ID	PRODUCT NUMBER	DESCRIPTION
760239082	SD-HD-UD-UDS2U-DOOR-LOCK-KT	Front door lock kit for SD-1U, SD-2U and SD-4U
760147736	PNL-BK-BLANK	1000 Aperture Blank Panel
760039875	G2-SRF	Liquid-tight cable fitting kit for small-diameter cables
760039883	G2-23BRKT	Frame mounting bracket kit for 23" frames and ETSI frames
760058677	RMB-6-1/2	InstaPATCH Plus attachment bracket, rack mounted, six 1/2" fittings
760058685	RMB-6-3/8	InstaPATCH Plus attachment bracket, rack mounted, six 3/8" fittings
760058701	RMB-5-3/4	3/4" Rack MTG bracket - 5X
760056549	Fiber Drum Kit	Fiber Drums for 1U and 2U shelves

OPTIONAL SPLICE TRAYS	
PRODUCT NUMBER	DESCRIPTION
FST-M-HS	Mini heat shrink splice tray, 12 fiber splice
FST-M-MT	Mini mass fusion splice tray, 24 fibers (2x12 ribbons)

*Can be used in place of the FIBER SPLICE CASSETTES.

Fiber optic patch cord configurator



1 2 3 4 5 6 7 8 9 10 11 12 13 14 - 16
 FD X LC LC 2 1 - J X F 010

Prefix

1	FD	Jumper - plenum
	FE	Jumper - riser
2	FF	Jumper - LSZH

Fiber type

3	X	LazrSPEED® 550 multimode
	W	TeraSPEED® singlemode

Connector 1

4	LC	LC standard
	LA	LC angled
5	SC	SC standard
	SA	SC angled

Connector 2

6	LC	LC standard
	LA	LC angled
7	SC	SC standard
	SA	SC angled

Length

14	2-999	Feet
16	1-999	Meters

Unit of measurement

13	F	Feet
	M	Meter

Breakout length

12	X	No breakout
----	---	-------------

Jacket color

11	B	Orange
	J	Yellow
	M	Aqua

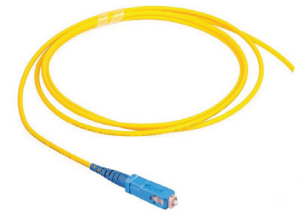
Fiber count

9	1	1 fiber
	2	2 fiber

Cordage size

8	2	1.6 mm simplex
	4	1.6 mm zipcord

Fiber optic pigtails configurator



1 2 3 4 5 6 7 8 9 10 11 12 13 14 - 16
 FA X LC UC 0 1 - M X F 002

Prefix

1	FA	Pigtail tight buffer
2	FB	Pigtail - riser SBJ
	FC	Pigtail - LSZH SBJ

Fiber type

3	X	LazrSPEED® 550 multimode
	W	TeraSPEED® singlemode

Connector 1

4	LC	LC standard
	LA	LC angled
5	SC	SC standard
	SA	SC angled

Connector 2

6	UC	Unconnectorized
---	----	-----------------

Length

14	1-23	Feet
-		
16	1-7	Meters

Unit of measurement

13	F	Feet
	M	Meter

Breakout length

12	X	No breakout
----	---	-------------

Jacket color

	J	Yellow
11	M	Aqua
	X	KIT pigtail

Fiber count

	1	1 fiber
9	A	6 fiber pigtail kit
	B	6 fiber pigtail kit
	C	12 fiber pigtail kit

Cordage size

	0	0.9 mm (Tight buffered fiber BTW)
8	1	0.9 mm (SBJ cordage)



commscope.com

Visit our website or contact your local CommScope representative for more information.

© 2019 CommScope, Inc. All rights reserved.

Unless otherwise noted, all trademarks identified by © or ™ are registered trademarks, respectively, of CommScope, Inc. This document is for planning purposes only and is not intended to modify or supplement any specifications or warranties relating to CommScope products or services. CommScope is committed to the highest standards of business integrity and environmental sustainability with a number of CommScope's facilities across the globe certified in accordance with international standards, including ISO 9001, TL 9000, and ISO 14001.

Further information regarding CommScope's commitment can be found at www.commscope.com/About-Us/Corporate-Responsibility-and-Sustainability.

BR-111463.2-EN (03/19)